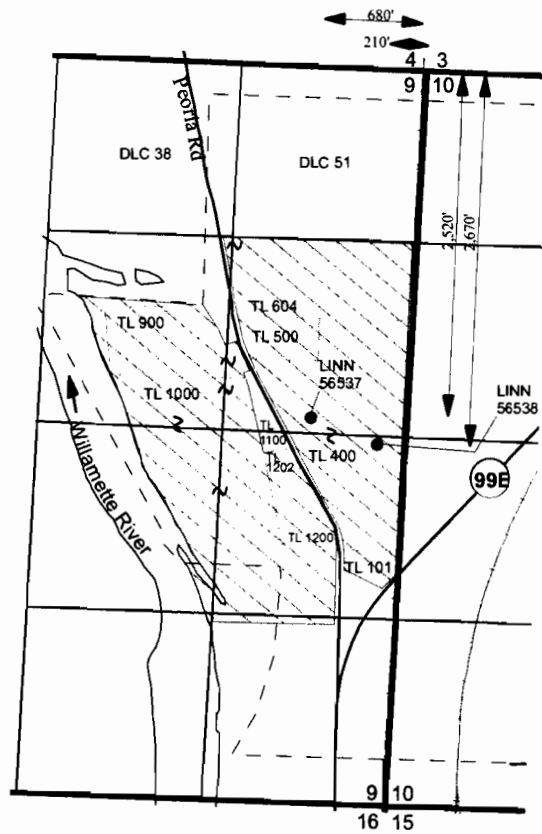


T15S, R4W, Section 9, WM Linn County, Oregon Application Map



RECEIVED

MAR 17 2009

WATER RESOURCES DEPT
SALEM, OREGON

- Proposed Wells
- ▨ Proposed Place of Use

THIS MAP IS NOT INTENDED TO
PROVIDE LEGAL DIMENSIONS OR
LOCATIONS OF PROPERTY
OWNERSHIP LINES.

March 2, 2009

EnviroLogic Resources, Inc.
AN ENVIRONMENTAL & WATER RESOURCES CORPORATION



1 inch = 1,320 feet

KNIFE RIVER
Harrisburg, Oregon