

12478-2

THIS MAP WAS PREPARED FOR ASSESSMENT PURPOSE ONLY

SECTION 13 T5S R4W W.M. YAMHILL COUNTY

5 4 13

Scale 1" = 1000'

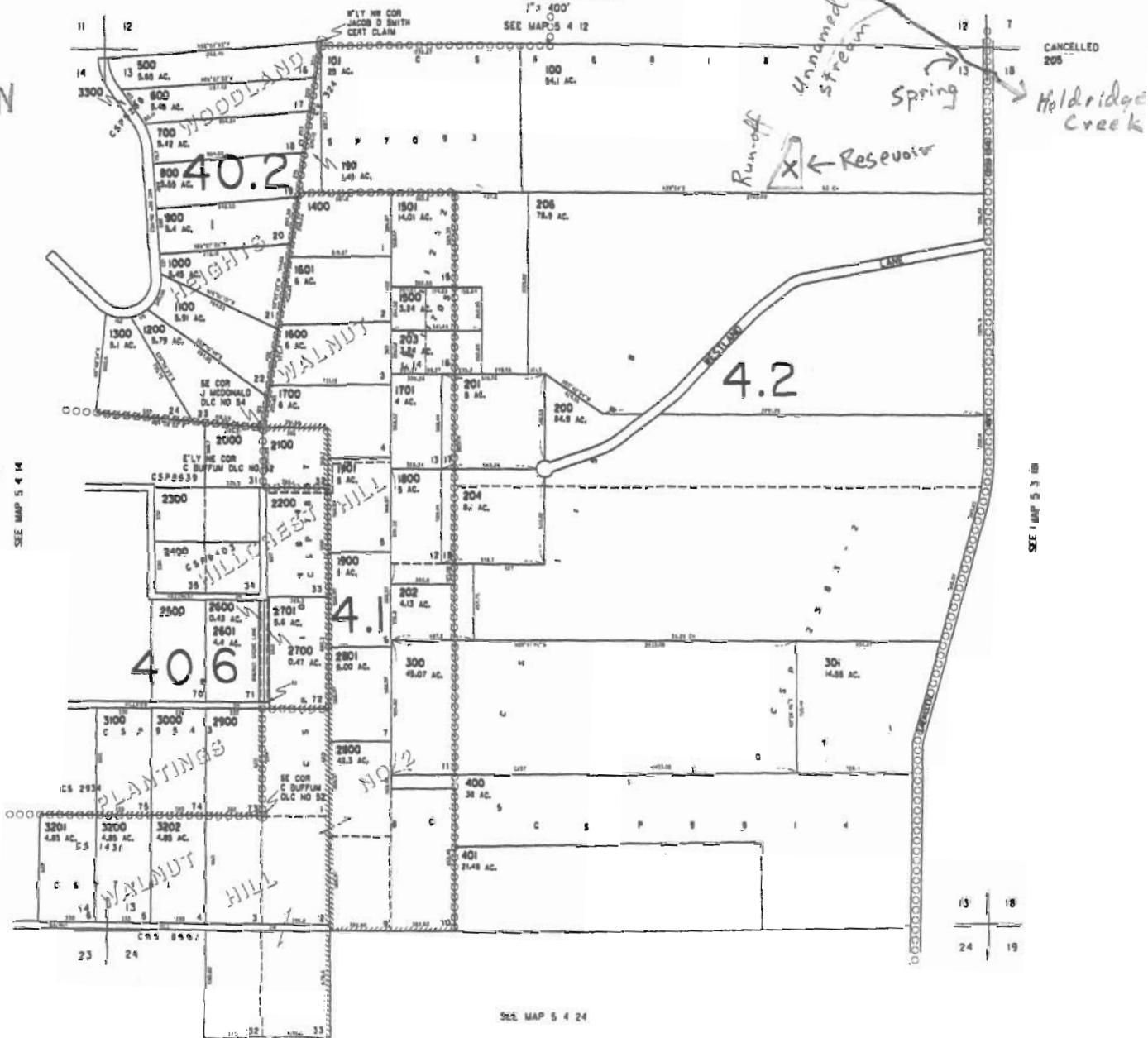


Reservoir Location;
650 ft S
1300 ft E
NE corner of Sec 13

Tax Lot
RS413-00100

Source is Run-off
Source is Cert
15760

RECEIVED
MAR 17 2009
WATER RESOURCES DEPT
SALEM, OREGON

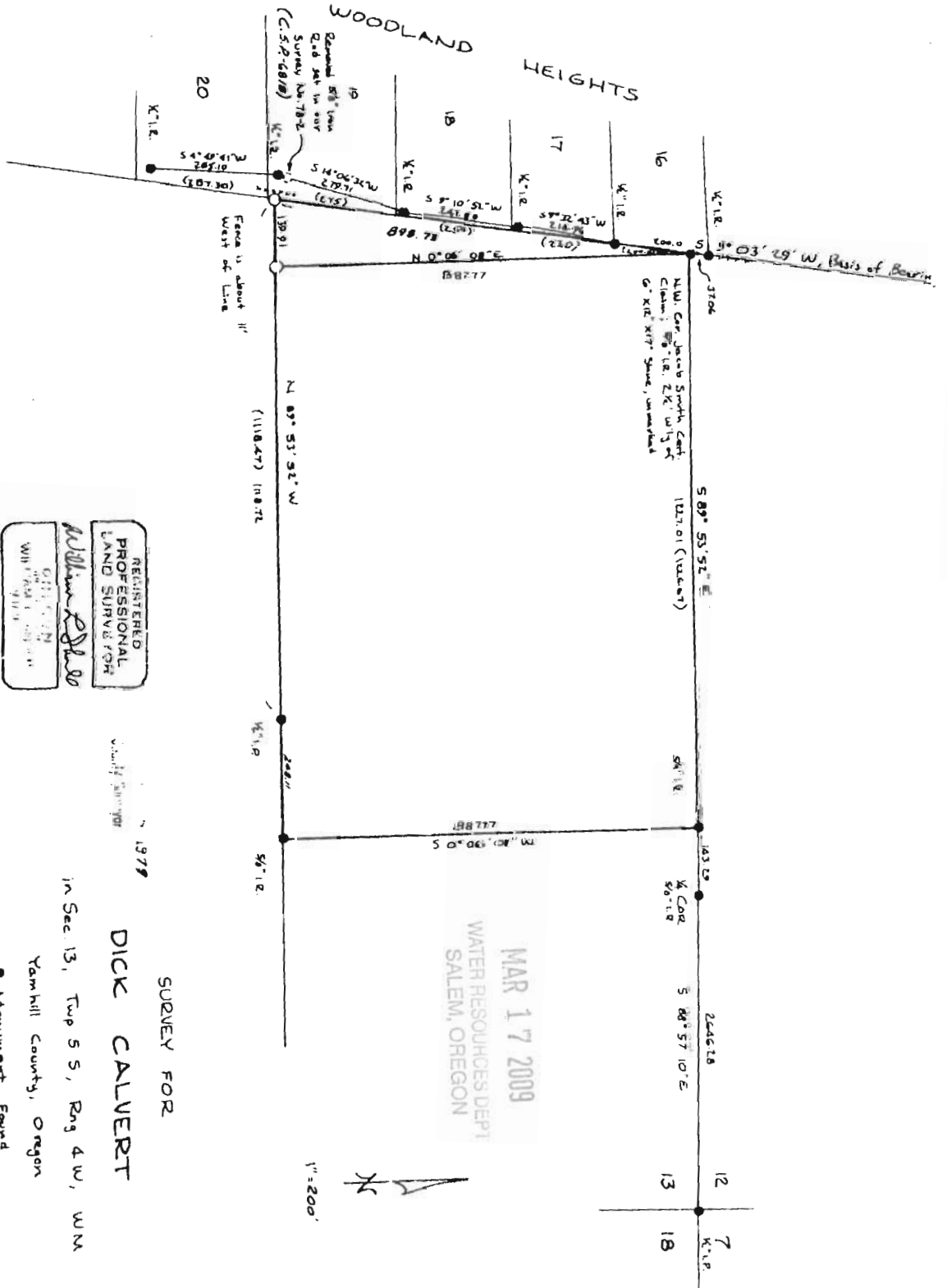


SEE MAP 5 3 18

SEE MAP 5 4 24

5 4 13

C.S.P. 7093



REGISTERED
PROFESSIONAL
LAND SURVEYOR

William E. Ellis

OFFICE
WINTER HAVEN, OREGON

SURVEY FOR
DICK CALVERT

in Sec 13, Twp 5 S, Rng 4 W, WM

Yamhill County, Oregon

● Monument Found

○ 5/8" Iron Rod Set

() Data of Record

December 28, 1978

AZIMUTH SURVEYING & ENGINEERING
No. 78-131 344-0026

MAR 17 2009
WATER RESOURCES DEPT
SALEM, OREGON

THIS MAP WAS PREPARED FOR
ASSESSMENT PURPOSE ONLY

SECTION 13 T5S R4W W.M,
YAMHILL COUNTY

5 4 13

R-8742

Scale
1" = 1000'

Reservoir Location:
650 ft S
1300 ft E
NE corner of Sec 13

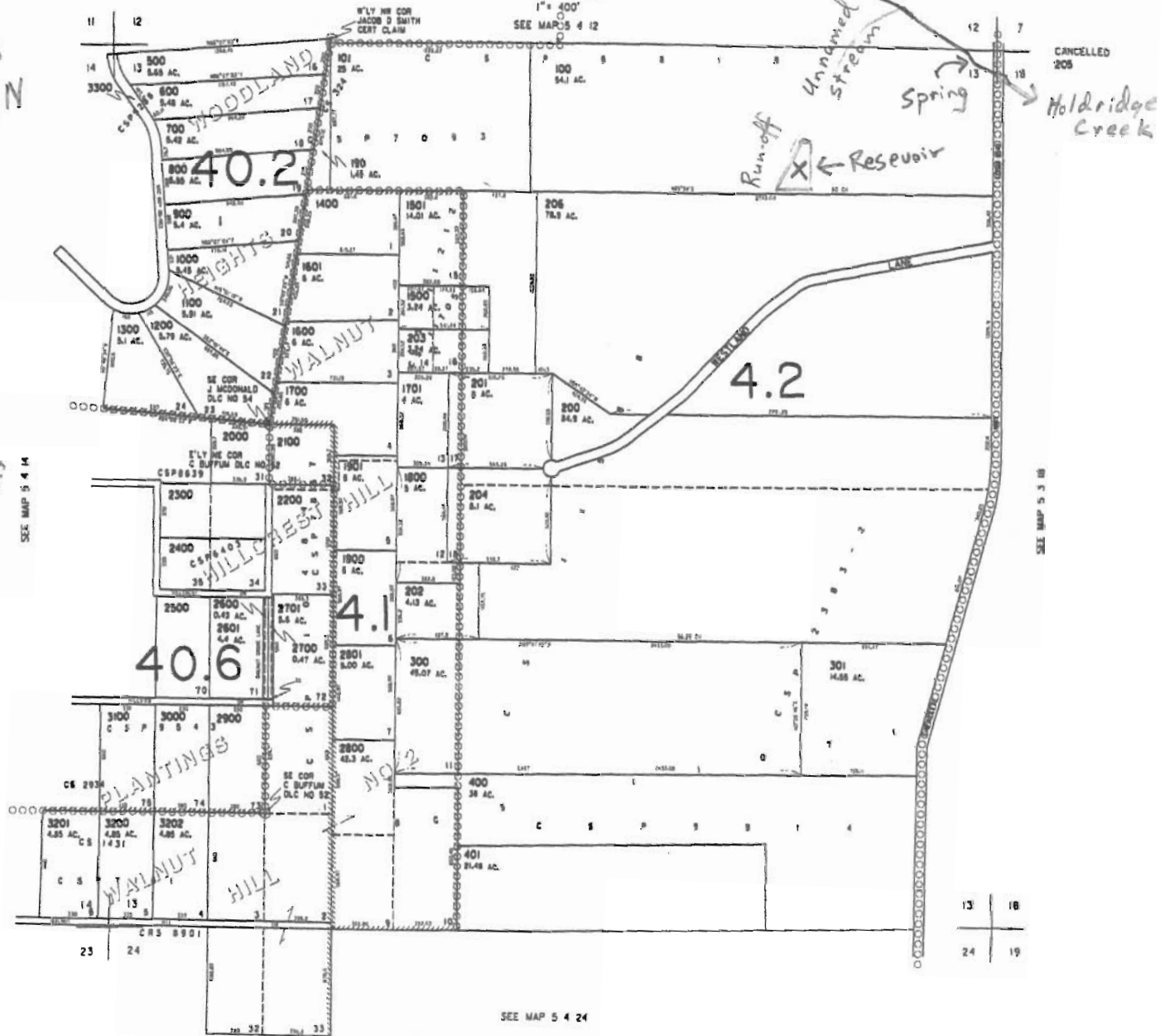
Tax Lot
R5413-00100

Source is Run-off
Source is Cert
15760

RECEIVED

MAR 17 2009

WATER RESOURCES DEPT
SALEM, OREGON



REVISED 1-7-08 58

SEE MAP 5 4 24

5 4 13

12478-R

THIS MAP WAS PREPARED FOR
ASSESSMENT PURPOSE ONLY

SECTION 13 T5S R4W W.M.
YAMHILL COUNTY

5 4 13

Scale
1" = 1000'

Reservoir Location:
650 ft S
1300 ft E
NE corner of Sec 13

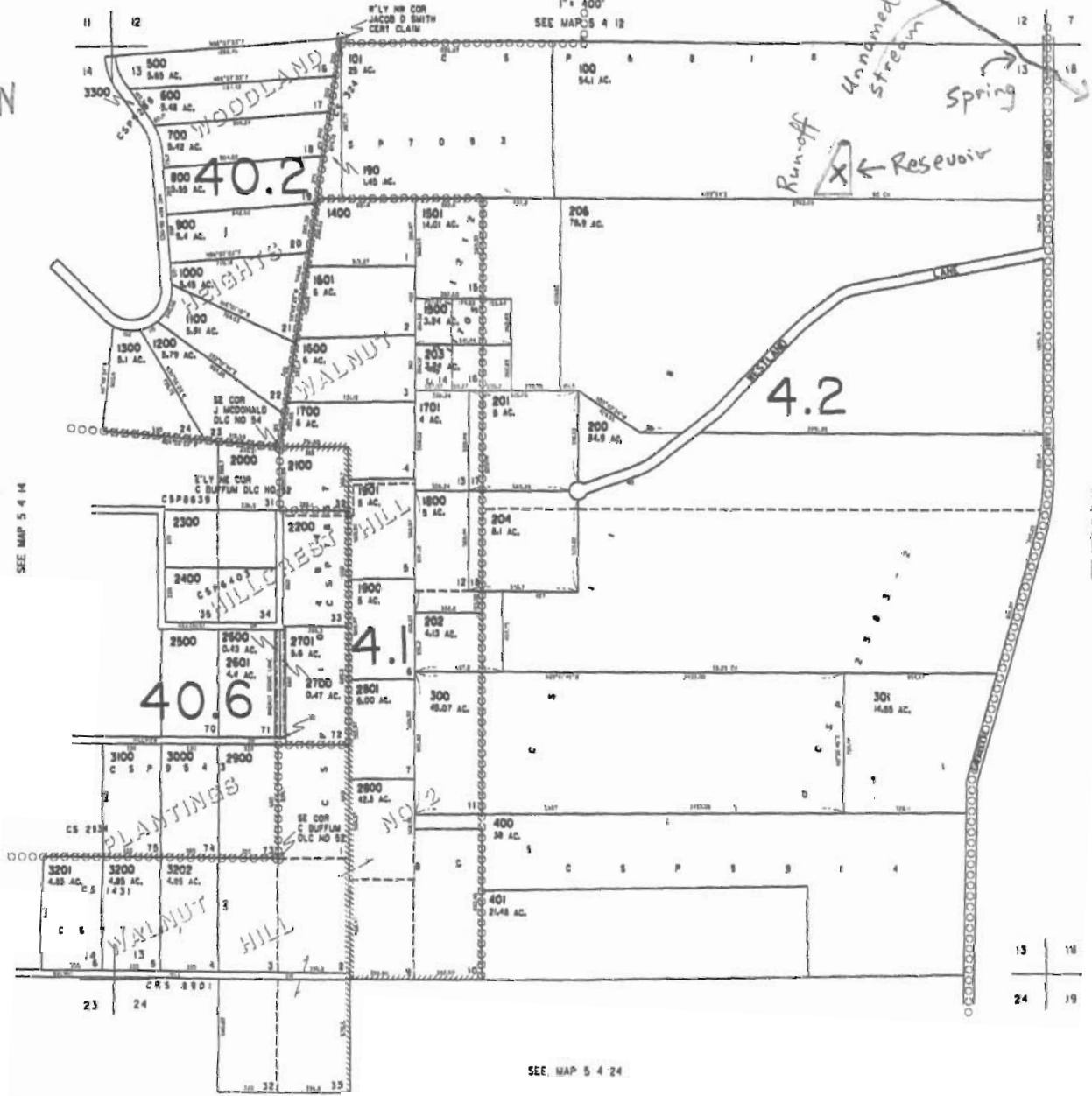
Tax Lot
R5413-00100

Source is Run-off
Source is Cert
15760

RECEIVED

MAR 17 2009

WATER RESOURCES DEPT
SALEM, OREGON



REVISED 1-2-06 53

SEE MAP 5 4 24

5 4 13

R-8742

Scale
1" = 1000'

Reservoir Location:
650 ft S
1300 ft E
NE corner of Sec 13

Tax Lot
R5413-00100

Source is Run-off
Source is Cert
15760

RECEIVED

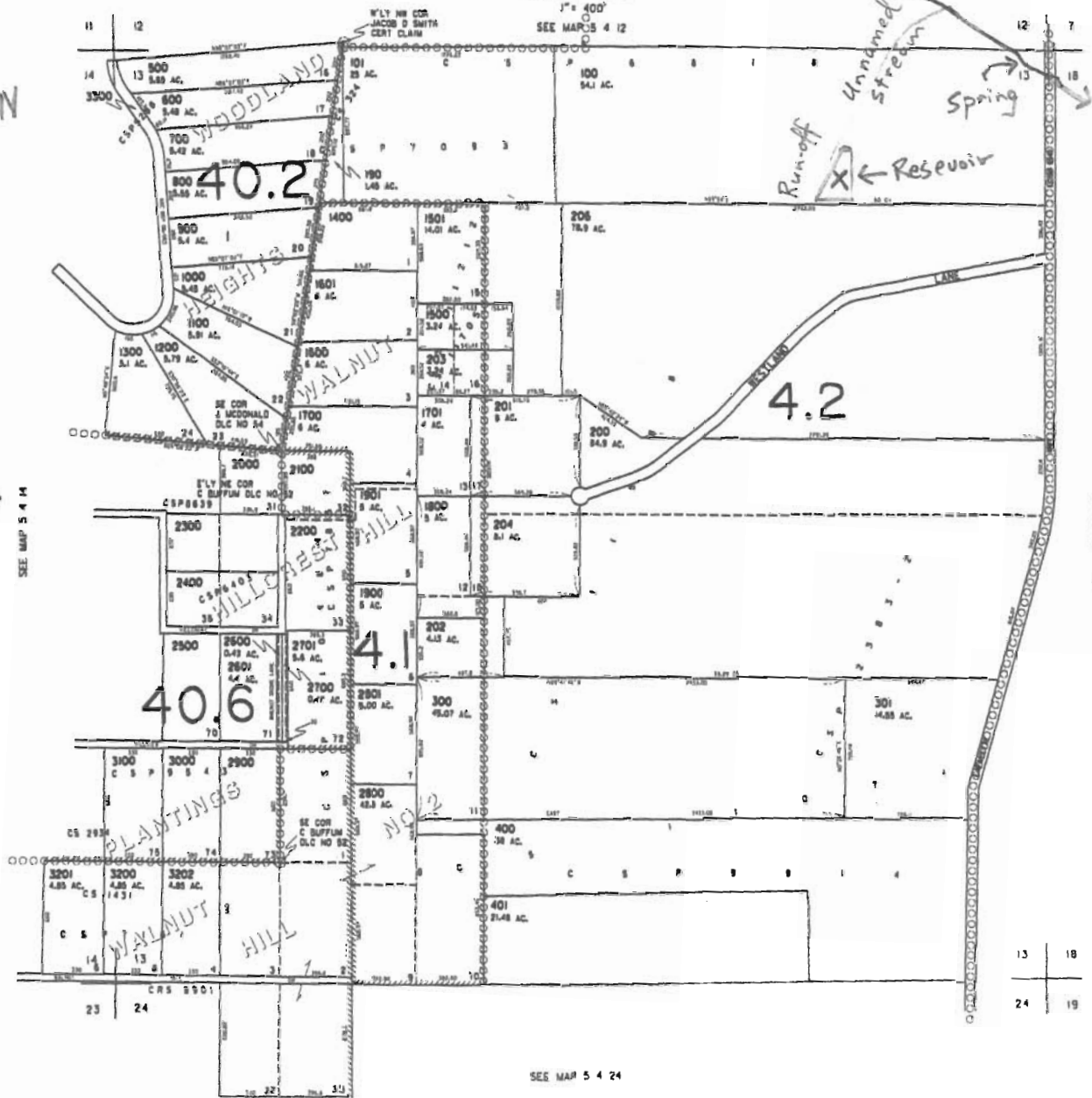
MAR 17 2009

WATER RESOURCES DEPT
SALEM, OREGON

THIS MAP WAS PREPARED FOR
ASSESSMENT PURPOSE ONLY

SECTION 13 T5S R4W W.M.
YAMHILL COUNTY

5 4 13



CANCELLED
205

Holdridge
Creek

SEE MAP 5 3 18

13 18
24 19

SEE MAP 5 4 24

REVISED 1-2-08 58

5 4 13