

Well (P.O.A.) Location Descriptions

Well No.	T	R	Sec	1/4-1/4	Tax Lot	Reference Corner	Northing (feet)	Easting (feet)
OM-4	27 S	14 W	29	NW - SE	1200	SW Corner Sec 29	2390	1742
OM-5	28 S	14 W	5	SW - SW	400	SW Corner of Sec 5	50	555
OM-6*	28 S	14 W	5	SW - NW	400	W 1/4 Corner of Sec 5	95	715

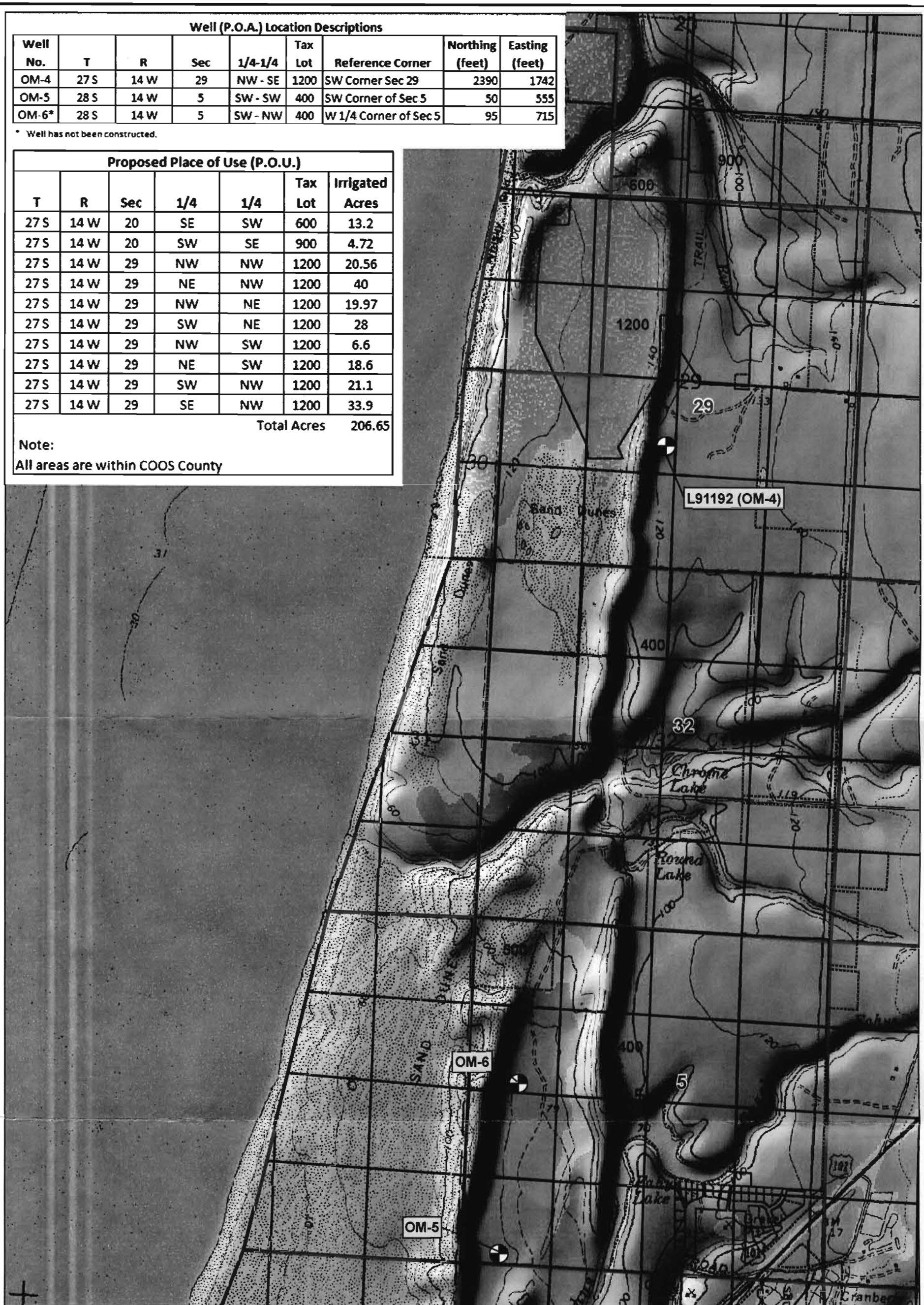
* Well has not been constructed.

Proposed Place of Use (P.O.U.)

T	R	Sec	1/4	1/4	Tax Lot	Irrigated Acres
27 S	14 W	20	SE	SW	600	13.2
27 S	14 W	20	SW	SE	900	4.72
27 S	14 W	29	NW	NW	1200	20.56
27 S	14 W	29	NE	NW	1200	40
27 S	14 W	29	NW	NE	1200	19.97
27 S	14 W	29	SW	NE	1200	28
27 S	14 W	29	NW	SW	1200	6.6
27 S	14 W	29	NE	SW	1200	18.6
27 S	14 W	29	SW	NW	1200	21.1
27 S	14 W	29	SE	NW	1200	33.9

Total Acres 206.65

Note:
All areas are within COOS County



LEGEND

- Proposed P.O.A.
 - Proposed P.O.U.
 - Reference Corner for Well
 - Section Boundary
 - Parcel and Tax Lot Number
- Note: Well COOS330 (New Shuman Well) has been replaced by Well ID L91192

0 1,300
Scale 1" = 1,300 Feet

Map Projection:
Oregon State Plane
South Zone, Nad 83, Feet
Source: USGS, Skinner & Assoc.
Stuntzner Engineering

This figure was originally produced in color. Reproduction in black and white may result in a loss of information

**Water Right Application Map
Old McDonald Course - Bandon Dunes**

Drawn: TH Revision: 5 Date: Jan. 16, 2009 Figure: 1