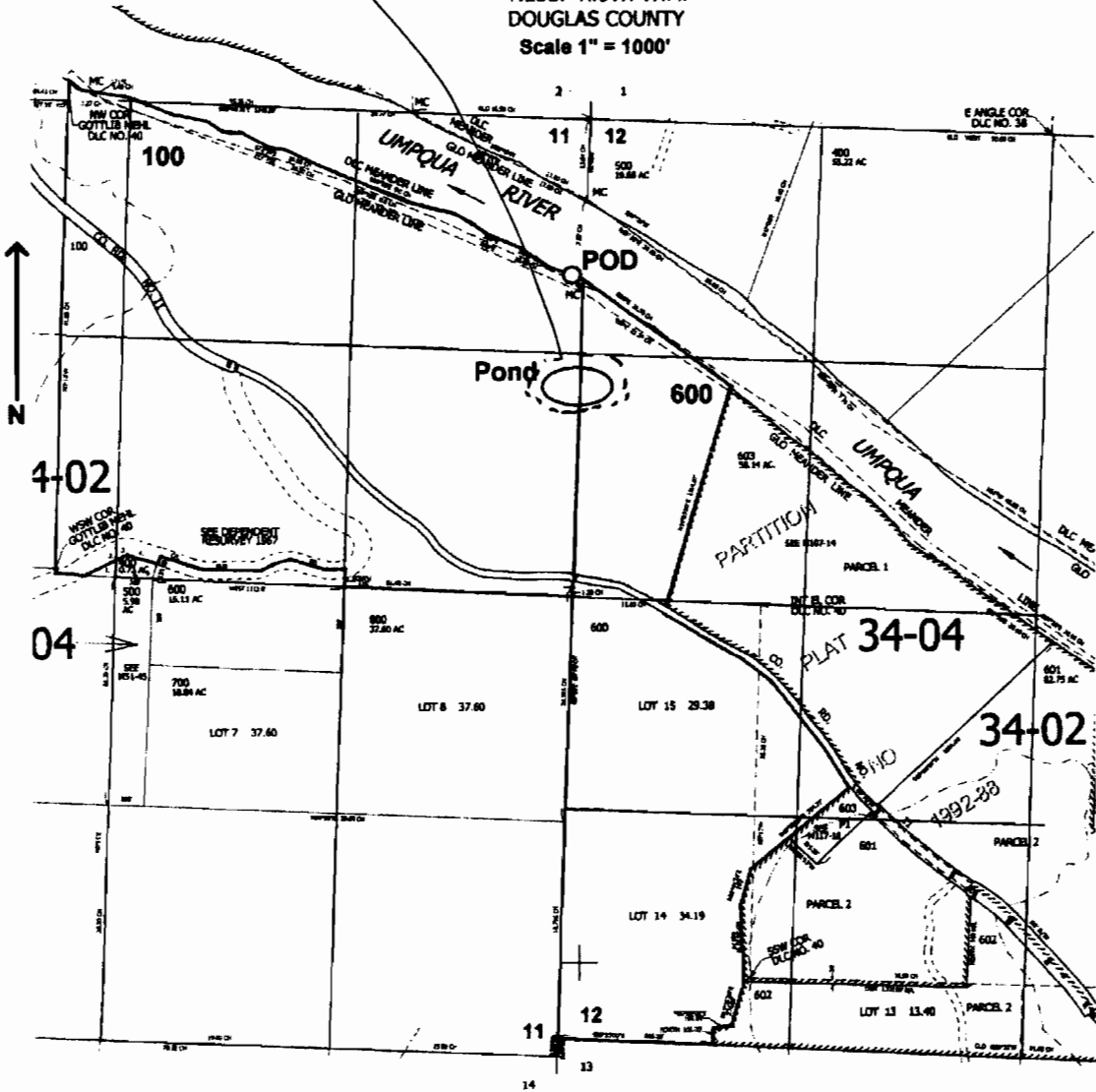


Enlargement to 19 acre ft, from original 12 acre ft

T.23S. R.8W. W.M.
DOUGLAS COUNTY
Scale 1" = 1000'



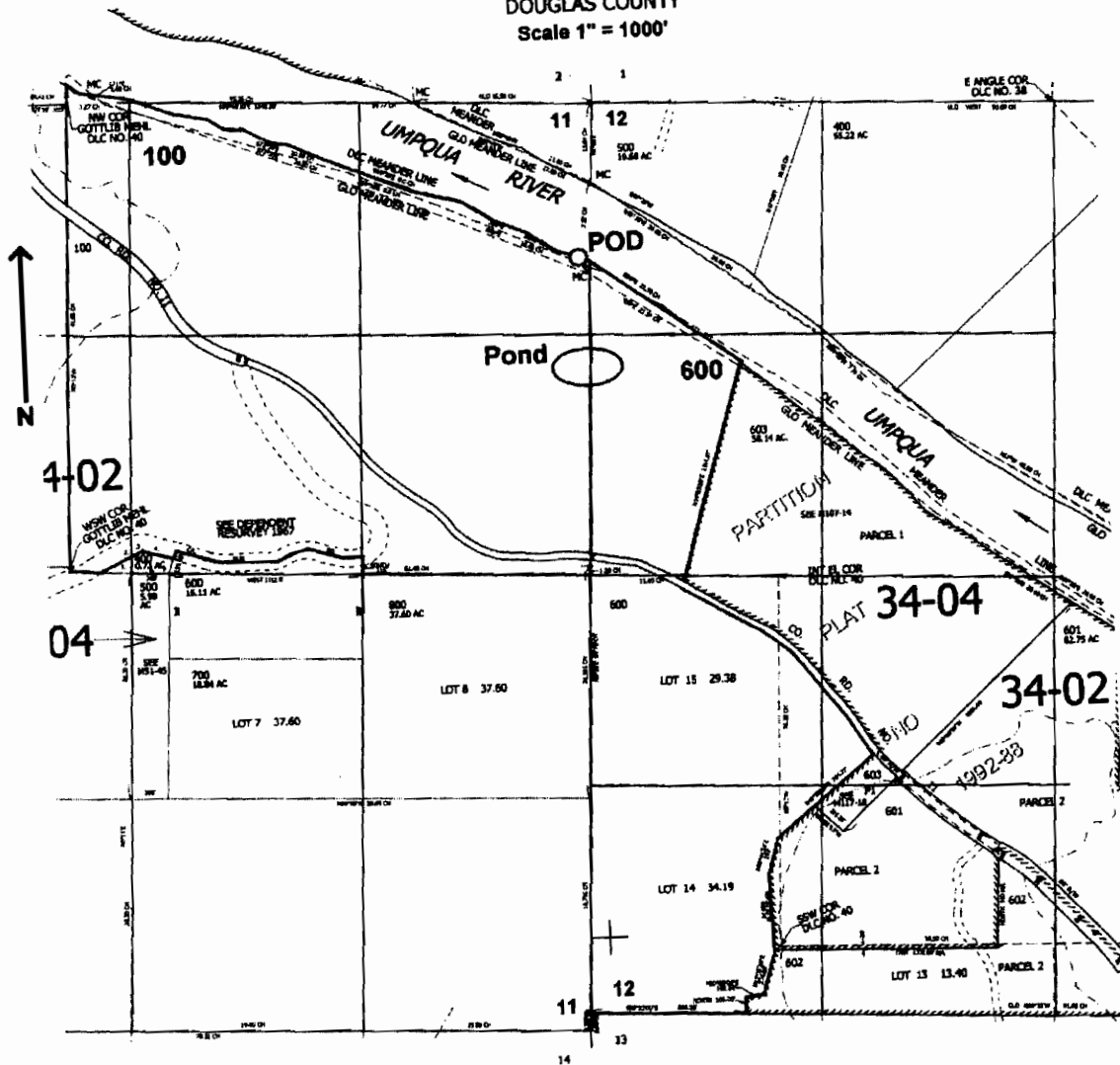
POD is located 900 ft. S. and 50 ft. W. }
 Pond is located 1550 ft. S. } from the NE corner of Sec. 11

RECEIVED
 OCT 08 2004
 WATER RESOURCES DEPT
 SALEM, OREGON

RECEIVED
 APR 22 2009
 WATER RESOURCES DEPT
 SALEM, OREGON

R-87445

T.23S. R.8W. W.M.
DOUGLAS COUNTY
Scale 1" = 1000'



POD is located 900 ft. S. and 50 ft. W. } from the NE corner of Sec. 11
Pond is located 1550 ft. S. }

RECEIVED
OCT 08 2004
WATER RESOURCES DEPT
SALEM, OREGON