

Application No. 52527
Permit No. 39613

RECEIVED

OCT 21 1974
STATE ENGINEER
SALEM, OREGON

POD #1 1526' NE 1037' W
from the E 1/4 corner of sec 28
POD #2 1514' NE 1064' W
from the E 1/4 corner of sec 28
Both being within the
NE 1/4 NE 1/4 of sec 28

spring POD #2
spring #1
wooden tank

NE 1/4 NE 1/4

SE 1/4 Section 28 T29S R11W W.M.

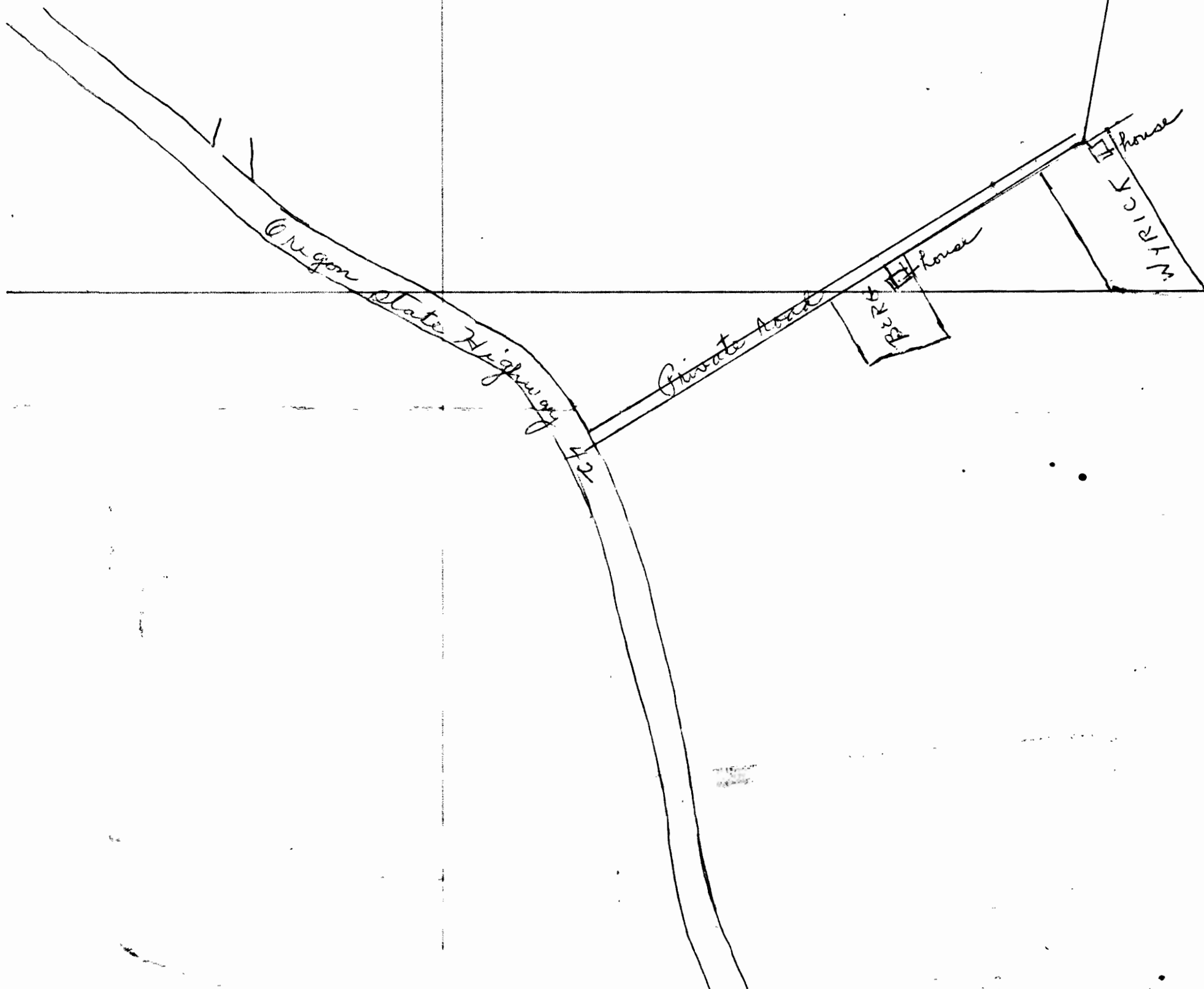
1" = 200'

See map 28 29 11

SE 1/4 NE 1/4 28 D 29 11

E 1/4 Corner
sec 28

See map 27 29 11



28 D 29 11