

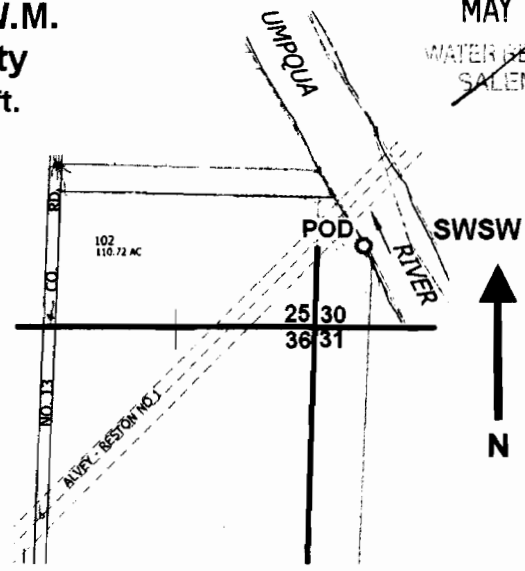
S-874415
87453 MRM

RECEIVED

MAY 08 2009

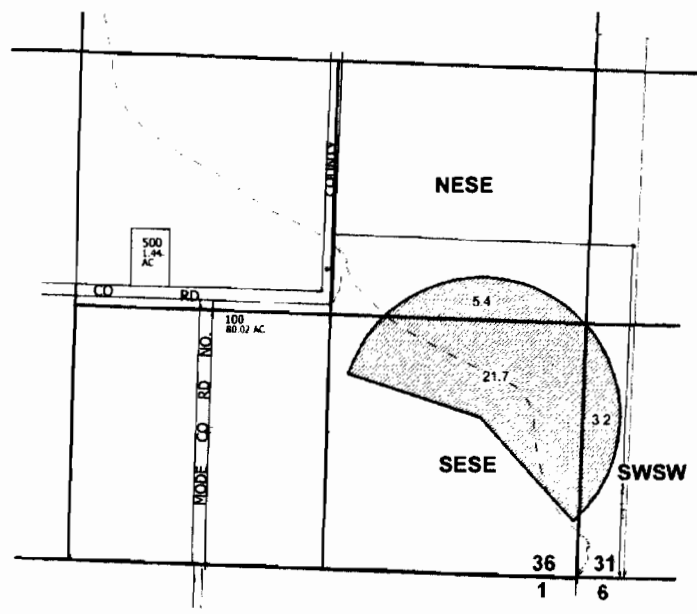
WATER RESOURCES DEPT
SALEM, OREGON
MRM

T. 25S. R. 6W. W.M.
Douglas County
Scale 1" = 1000 ft.



POD located 410 ft. N. and 210 ft. E. from the SW corner of Sec. 30.

T. 25S. R. 7W. W.M.
Douglas County
Scale 1" = 1000 ft.



RECEIVED

APR 29 2009

WATER RESOURCES DEPT
SALEM, OREGON