

ALDER CREEK RESERVOIR

T. 11 S., R. 42 E., W.M.  
T. 11 S., R. 43 E., W.M.

ALL SHOWN IRRIGATED LANDS ARE  
IN T.L. 2600 OF TAX MAP 11S43E

15" DIA. CL. 100  
P.I.P. PIPELINE

12" DIA. CL. 100  
P.I.P. PIPELINE

Sec 19 nw1/4 SE1/4 26.8 Acres  
NE1/4 SE1/4 26.8  
SW1/4 NE1/4 34.3  
SE1/4 NE1/4 31.5  
NE1/4 NW1/4 21.3  
NW1/4 NE1/4 40.0  
NE1/4 NE1/4 33.6

Sec 18 SE1/4 SW1/4 6.1  
SW1/4 SE1/4 21.4  
SE1/4 SE1/4 28.5  
NE1/4 SE1/4 6.0  
NW1/4 SE1/4 20.3

Sec 17 SW1/4 SW1/4 4.0

Total Acres 300.6

Sec 19  
NE1/4 NE1/4 \*proposed well  
location  
650ft  
from corner traveling  
SW

lands to be irrigated with well water!



\* proposed well location

Proposed well location  
650ft from NE1/4 NE1/4 of  
Sec 19

RECEIVED

MAY 11 2009

WATER RESOURCES DEPT  
SALEM, OREGON

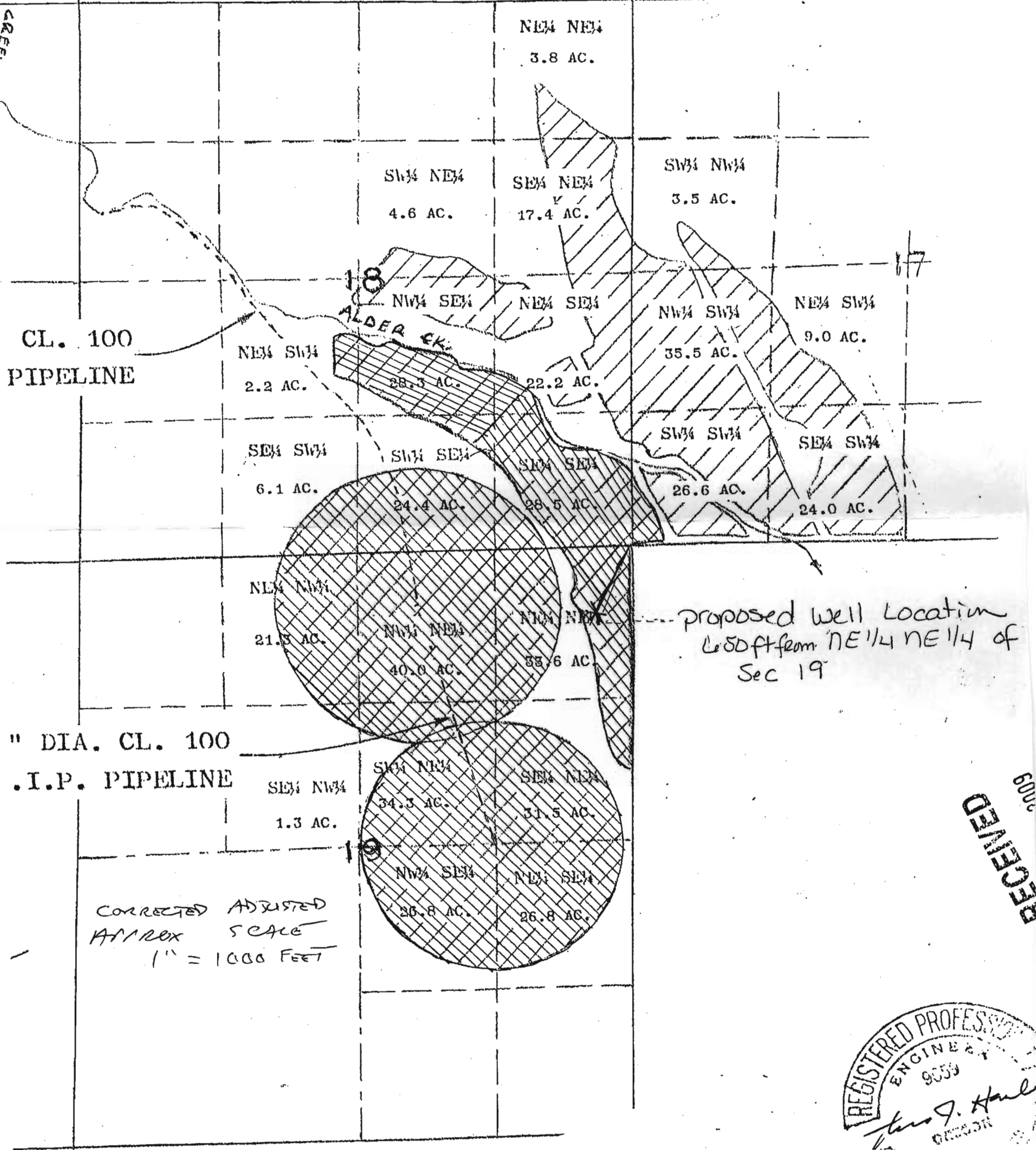


4/22/09  
Burt & Terri Siddoway

ALL SHOWN IRRIGATED LANDS ARE  
IN T.L. 2600 OF TAX MAP 11S43E

G-17213

CRP



CL. 100  
PIPELINE

18  
ALDER CK.

19

CL. 100  
I.P. PIPELINE

proposed well location  
650 ft from NE1/4 NE1/4 of  
Sec 19

CORRECTED ADJUSTED  
APPROX SCALE  
1" = 1000 FEET

RECEIVED  
6000

REGISTERED PROFESSIONAL  
ENGINEER  
9059  
J. J. Haul  
OREGON