

SECTION 13 T35S R2W W M

SCALE 1"=400'

35 2W 12

WORK COPY

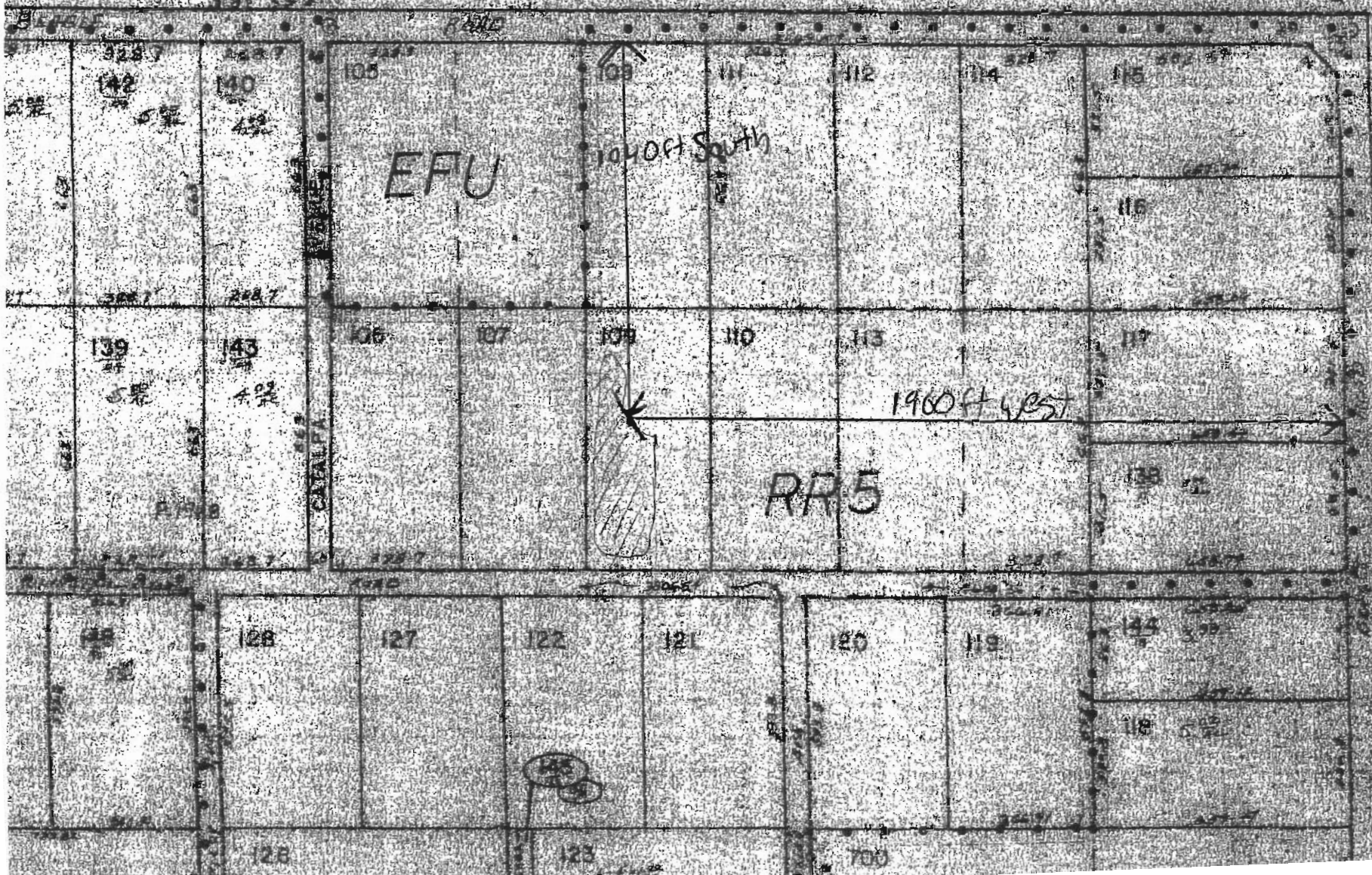
PROPOSED WELL LOCATION
1040 FT SOUTH AND 1960 FT WEST
NE CORNER SEC 13 T35S R2W

RECEIVED

MAY 6 1969

WATER RESOURCES DIVISION
SALEM, OREGON

35 2W 13



THIS MAP WAS PREPARED FOR ASSESSMENT PURPOSE ONLY

SECTION 13 T.35S. R.2W. W.M. JACKSON COUNTY

1" = 400'

Corrected Assumed Approx Scale 1" = 400 Feet

