

BUENA VENTURA

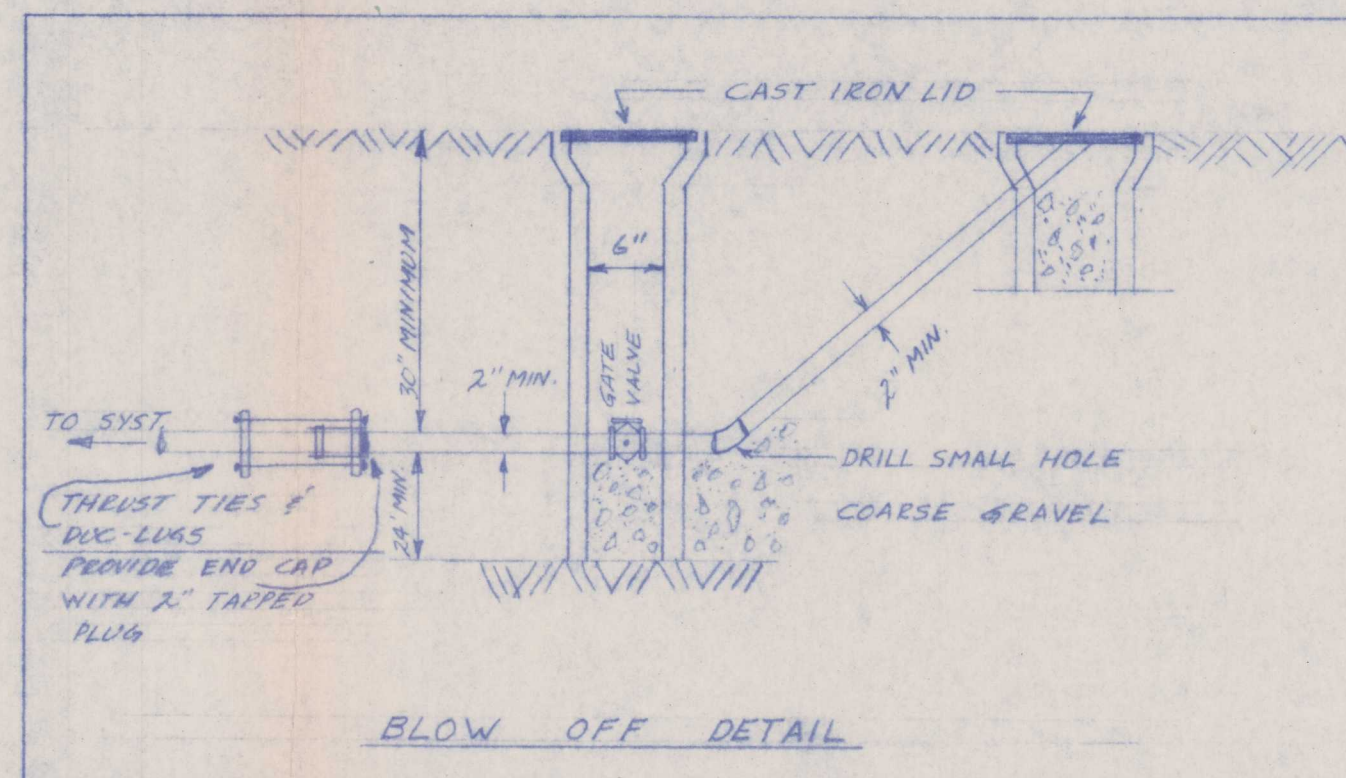
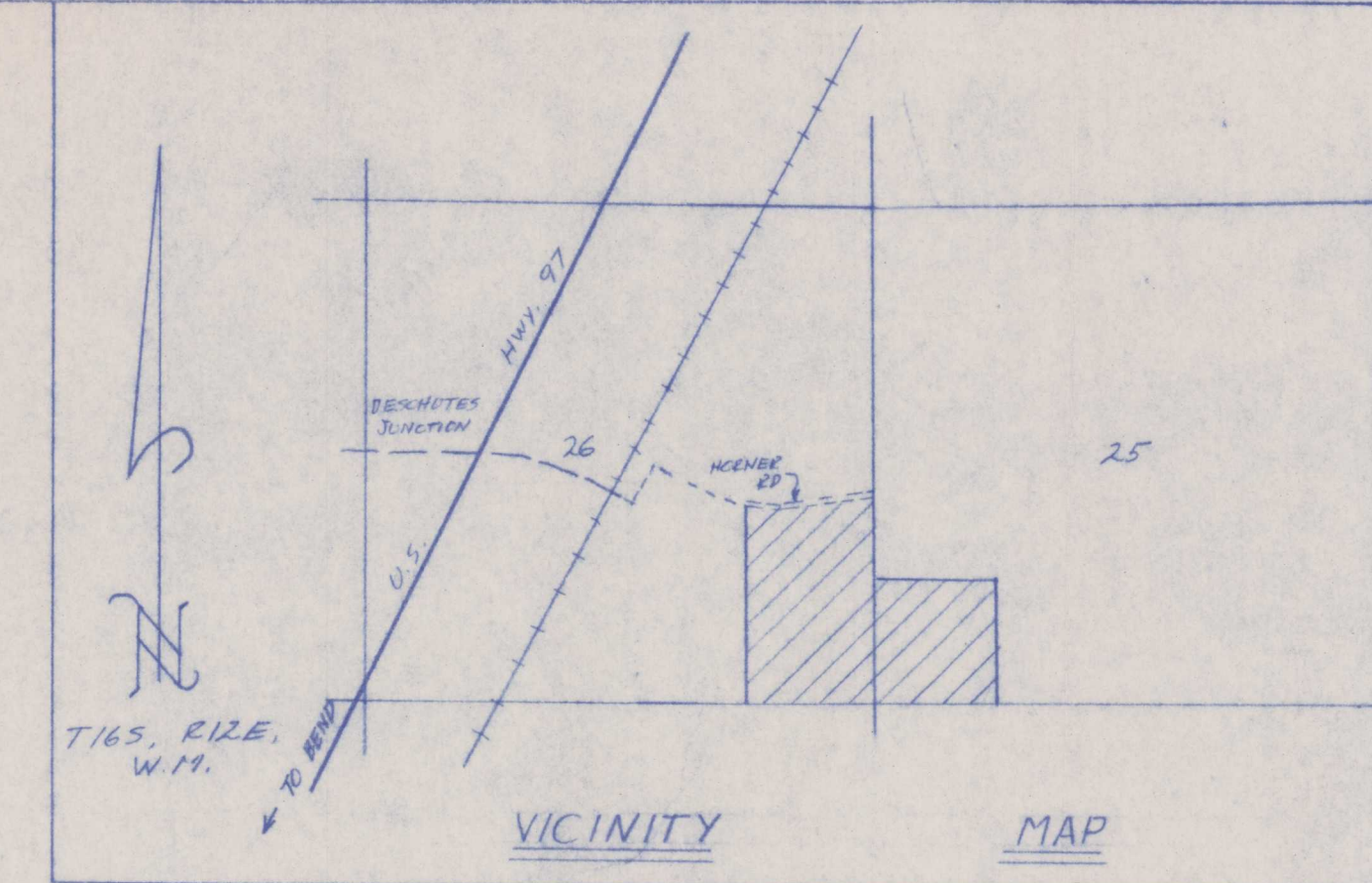
WATER IMPROVEMENT PLANS

RECEIVED

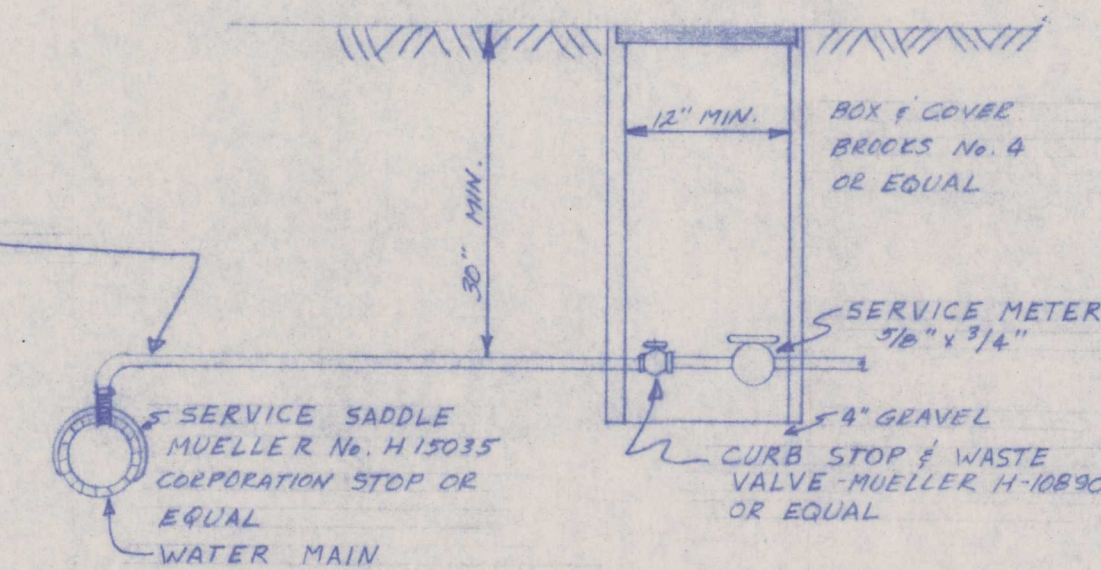
NOV 14 1977

WATER RESOURCES DEPT.
SALEM, OREGON

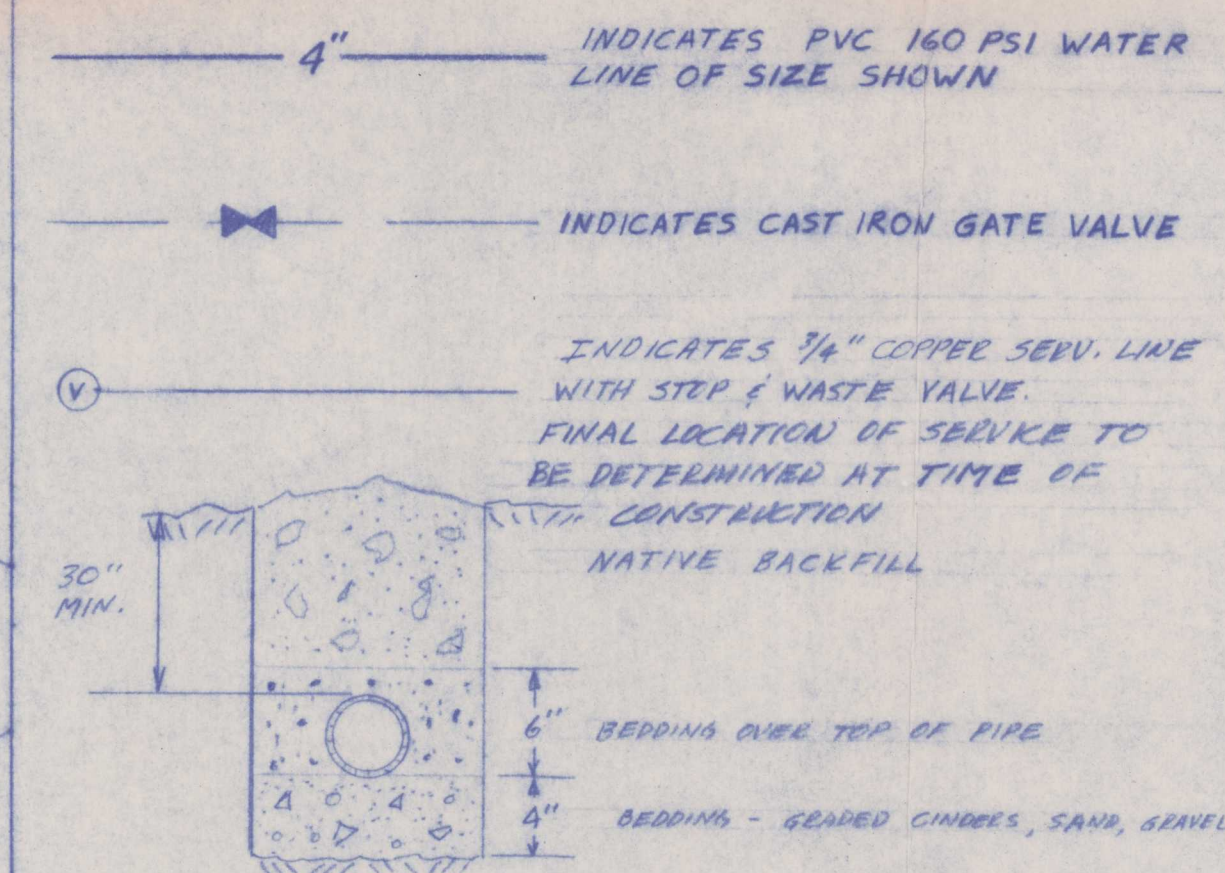
NOTE: GATE VALVES 2 1/2 INCHES AND SMALLER SHALL BE ALL BRONZE NON-RISING STEM. GATE VALVES 3 INCHES AND LARGER SHALL BE DESIGNED FOR 150 PSI MINIMUM WORKING PRESSURE, NON-RISING STEM, DOUBLE DISC TYPE WITH PARALLEL OR INCLINED SEATS, BOTTOM WEDGING, AND HAVE 2 INCH SQUARE OPERATING NUTS. VALVES SHALL BE DESIGNED FOR THE TYPE OF JOINT USED FOR THE PIPE TO WHICH THE VALVES ARE CONNECTED.



SERVICE CONNECTION DETAIL
NO SCALE

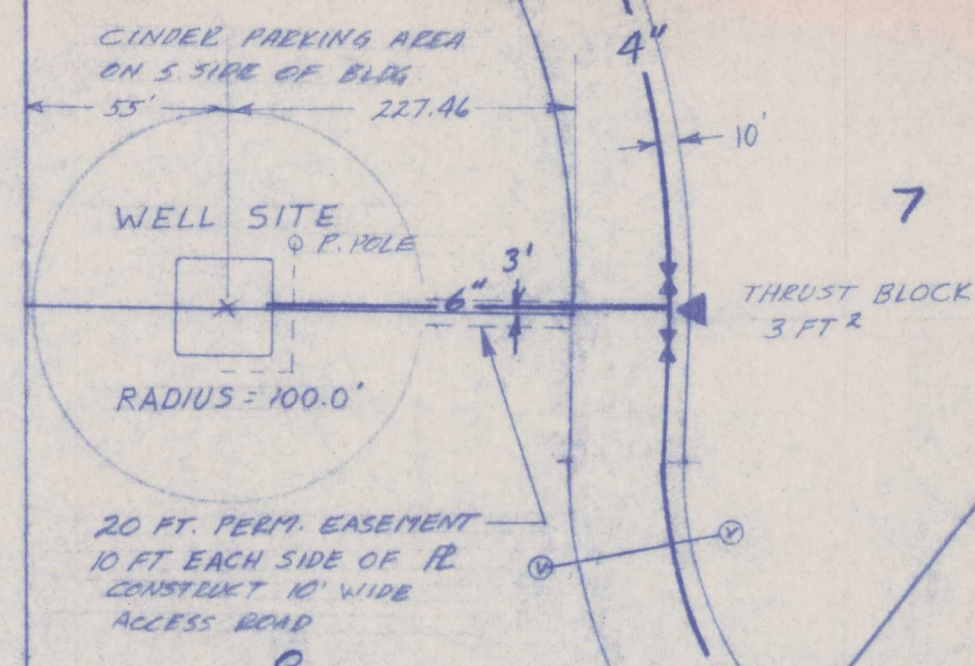
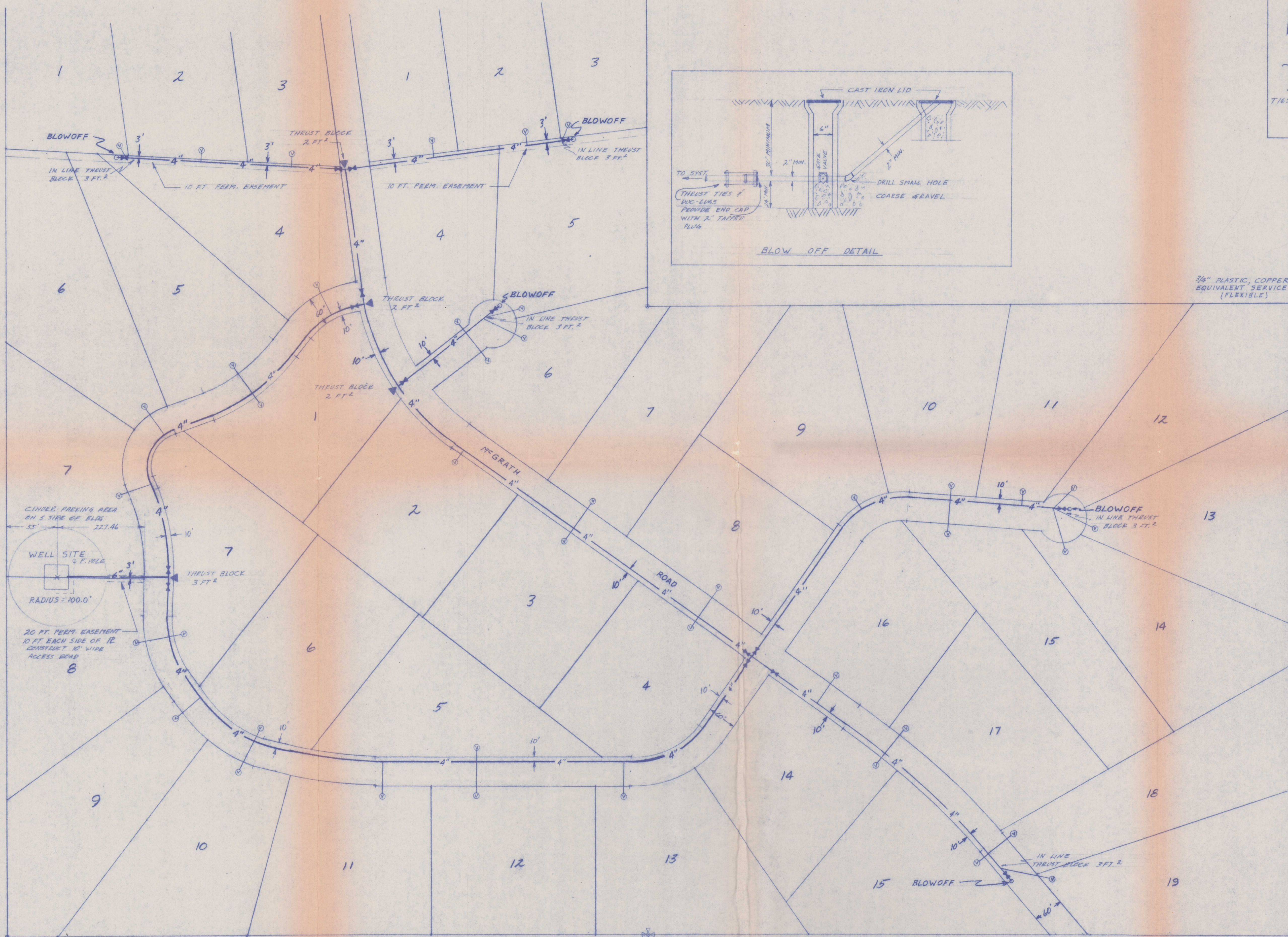


LEGEND



GENERAL NOTES

- (1) SEPTIC TANKS & DRAIN FIELDS CANNOT BE LOCATED NEARER THAN 100 FT. TO WELL OR WATER LINES
- (2) TOTAL NO. SINGLE FAMILY WATER SERVICES = 41
- (3) MINIMUM - 30" OF COVER OVER PIPE
- (4) ALL VALVES TO BE FITTED WITH A VALVE BOX ASSEMBLY CONSISTING OF THE TOP SECTION, COVER, AND THE EXTENSION SECTION. THE TOP SECTION SHALL BE CAST IRON WITH AN OVERALL LENGTH OF 15 INCHES. INSIDE DIAMETER OF THE BARREL SHALL BE 6 1/4 INCHES. THE EXTENSION STEM SHALL BE STEEL WATER WELL CASING WITH AN OUTSIDE DIAMETER OF 6 INCHES.



NORTHWEST SURVEYS
251 S. 6TH ST.
REDMOND, OREGON

"BUENA VENTURA"
WATER DISTRIBUTION SYSTEM

DWN. BY: RBC
DES. BY: AHK

CHK. BY: SHEET 1 OF 2
SCALE: 1" = 100'