

SW 1/4 SEC.28 T.3S. R.4E. W.M.

CLACKAMAS COUNTY

1"=200'

This map was prepared for assessment purpose only.

CANCELLED T.L'S

- 1400
- 1401
- 1490
- 1491
- 1492
- 1800
- 1701

22500

Applicant: Jerald Wyant and Jane Pine

POD Location:

1) 1320' North and 1800' East from the SW Corner of Section 28, T. 3 S., R. 4 E.

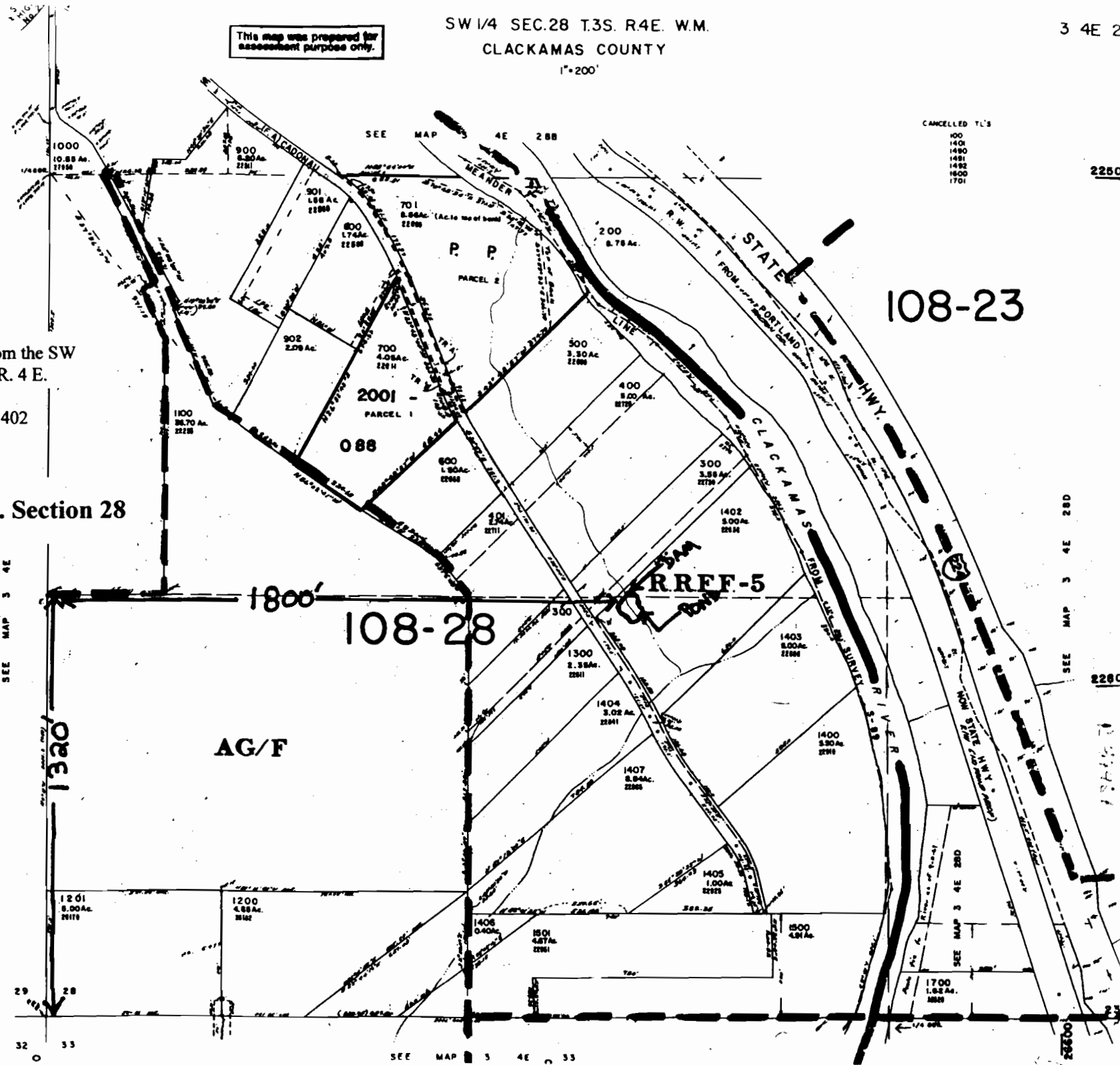
Within SE1/4 SW1/4; Tax Lot 1402

108-23

SW 1/4 T. 3 S. R. 4 E. Section 28



Scale: 1" = 400'



RECEIVED

MAY 22 2009

WATER RESOURCES DEPT
SALEM, OREGON

29 28 32 33

SEE MAP 3 4E 33

SEE MAP 3 4E 28D

22500

22500