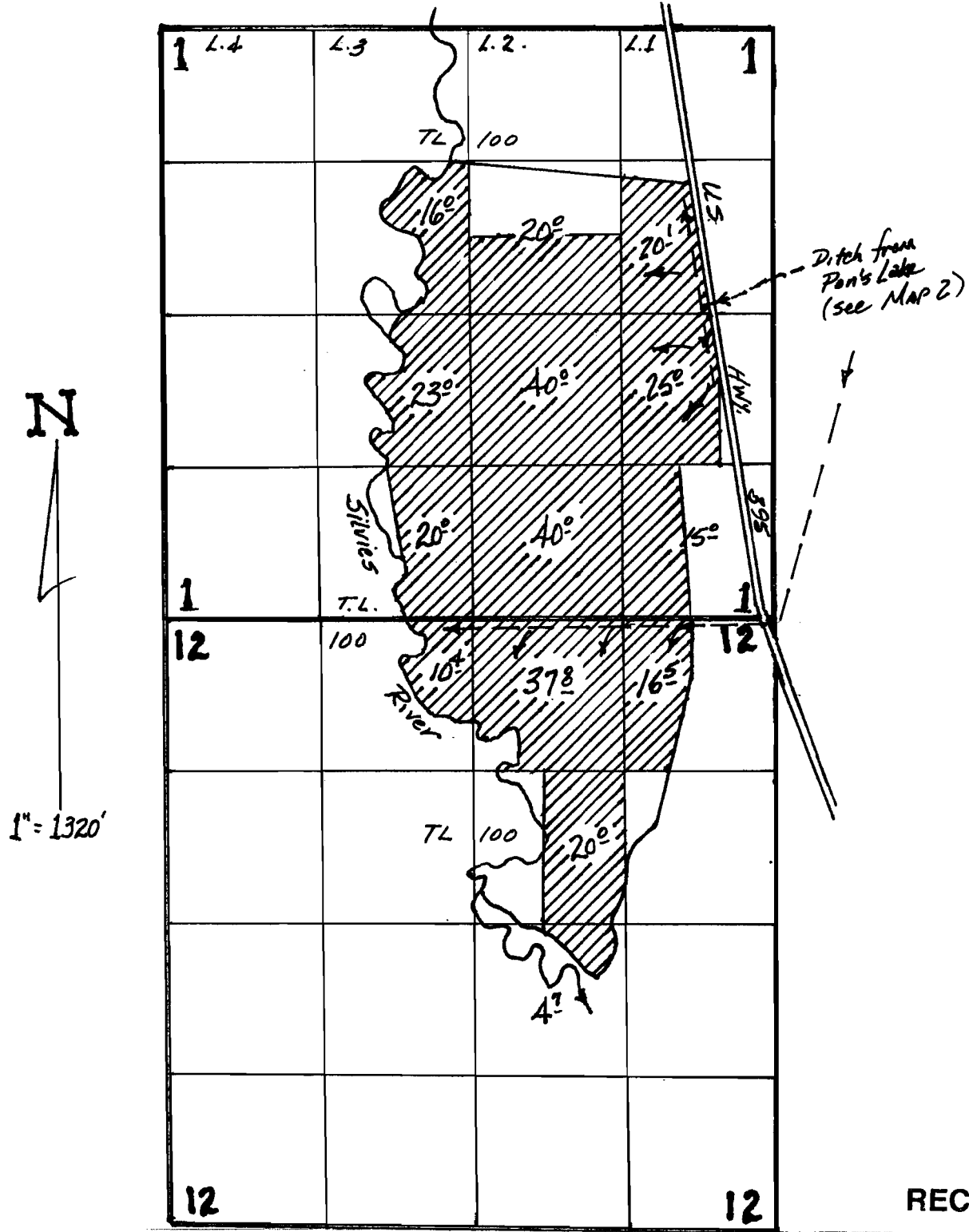


# T. 18 S., R. 31 E., W.M.

5-87463



Map to Accompany Application  
in the name of  
Silvies Valley Ranch, LLC

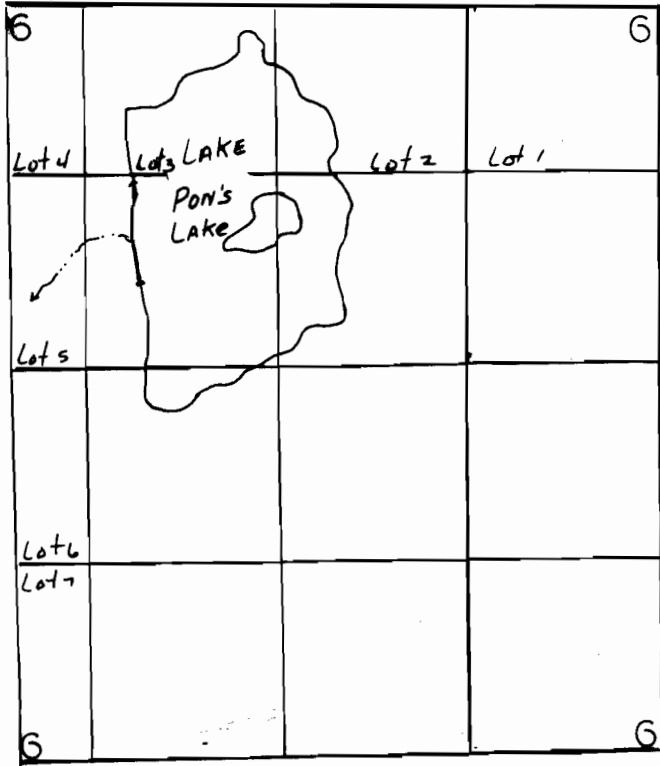
RECEIVED

MAY 29 2009

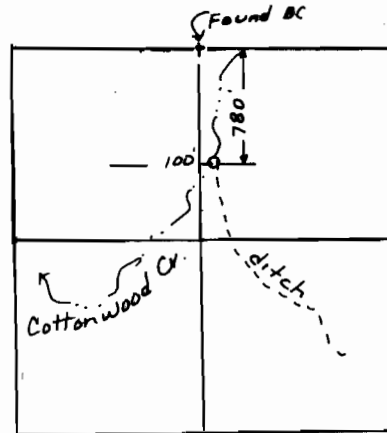
WATER RESOURCES DEPT  
SALEM, OREGON

Map 1 of 2  
APR 2009

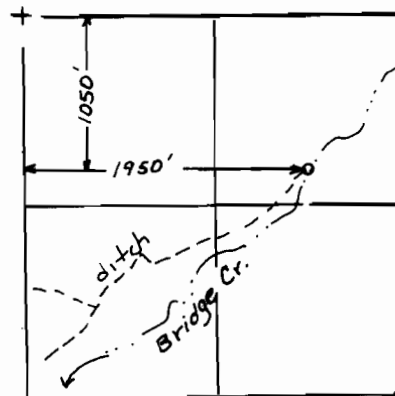
# T. 18 S., R. 32 E., W.M.



T. 17 S. R. 32 E.  
NE 1/4 SEC. 31



T. 18 S. R. 32 E.  
NW 1/4 SEC. 5



## FINAL PROOF SURVEY UNDER

Application No. R43162. Permit No. R.4806.....  
IN NAME OF

.....HARNEY COUNTY INVESTMENT CORP.....

Surveyed 9/28..... 1999 by J.MILLER.....

RECEIVED

MAY 29 2009

WATER RESOURCES DEPT  
SALEM, OREGON

Map 2 of 2