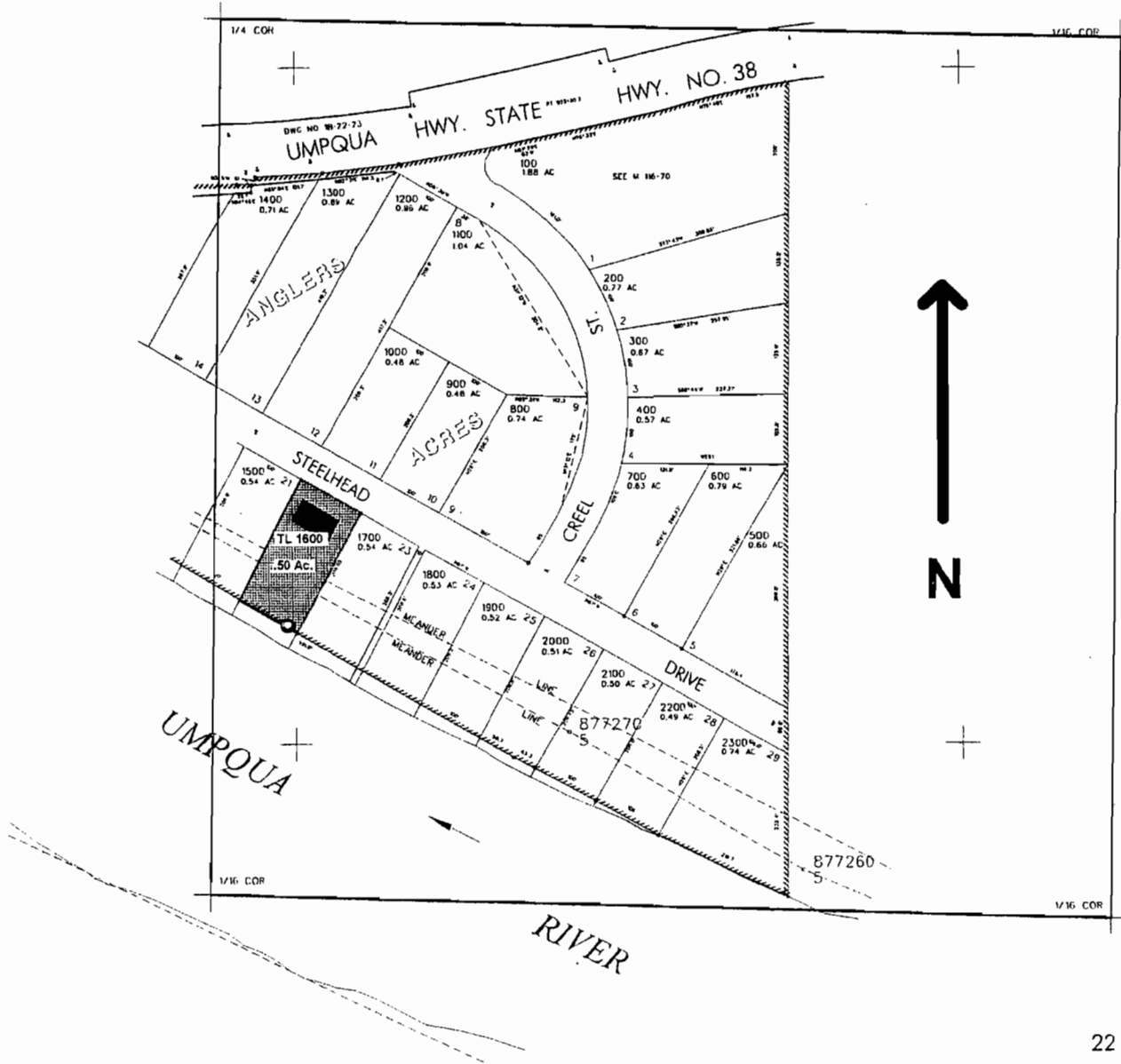


NW1/4 NE1/4 SEC. 23 T.22S. R. 8W. W.M.
DOUGLAS COUNTY
Scale: 1" = 250"

22 8 23AB



POD is located 875 ft. S. and 110 ft. E. from the N 1/4 corner of Section 23.

22 8 23AB

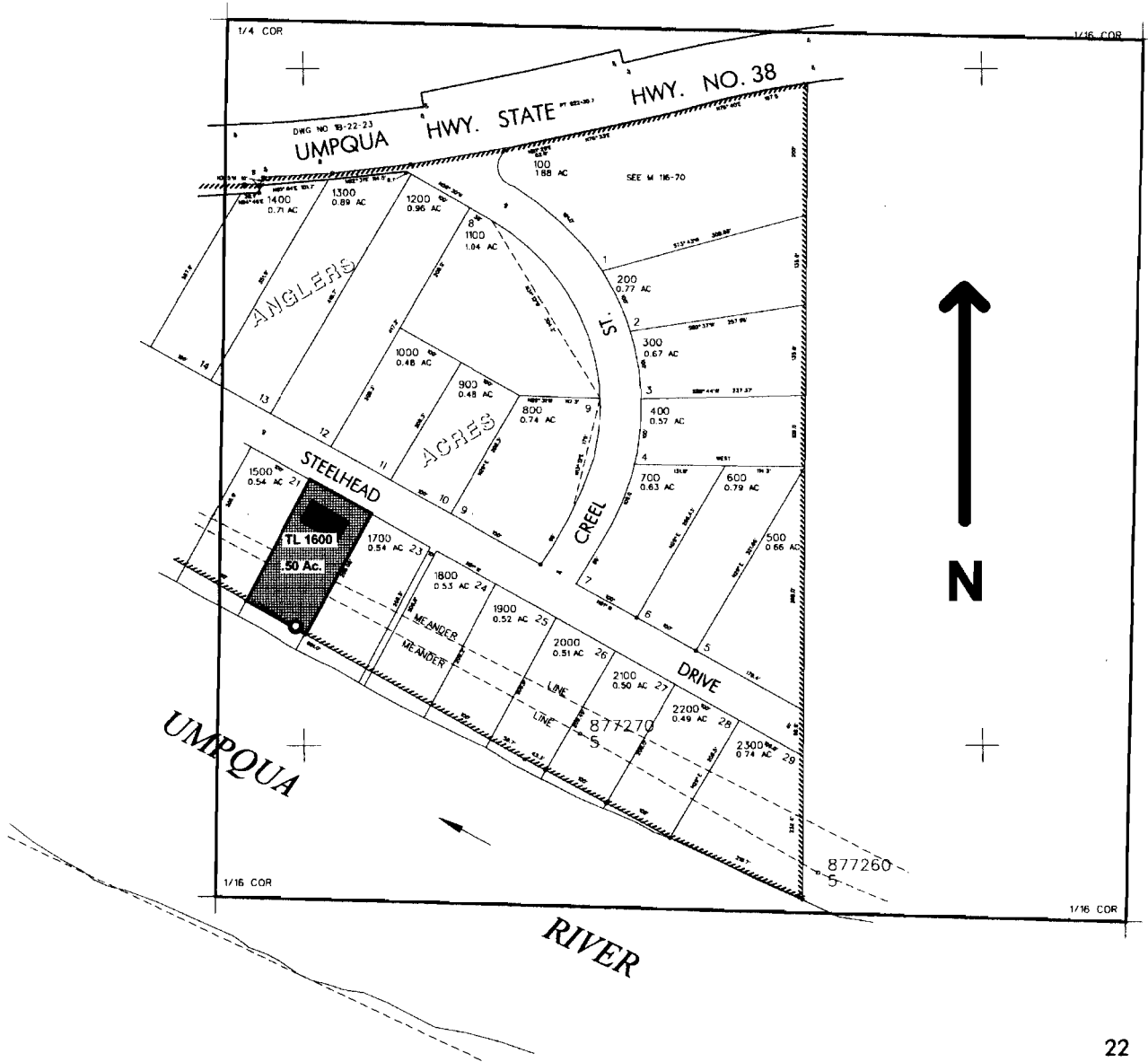
RECEIVED

JUN 17 2009

WATER RESOURCES DEPT
SALEM, OREGON

NW1/4 NE1/4 SEC. 23 T.22S. R. 8W. W.M.
DOUGLAS COUNTY
Scale: 1" = 250"

22 8 23AB



POD is located 875 ft. S. and 110 ft. E. from the N 1/4 corner of Section 23.

22 8 23AB

RECEIVED

JUN 17 2009

WATER RESOURCES DEPT
SALEM, OREGON