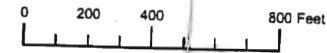


THIS MAP WAS PREPARED FOR ASSESSMENT PURPOSE ONLY

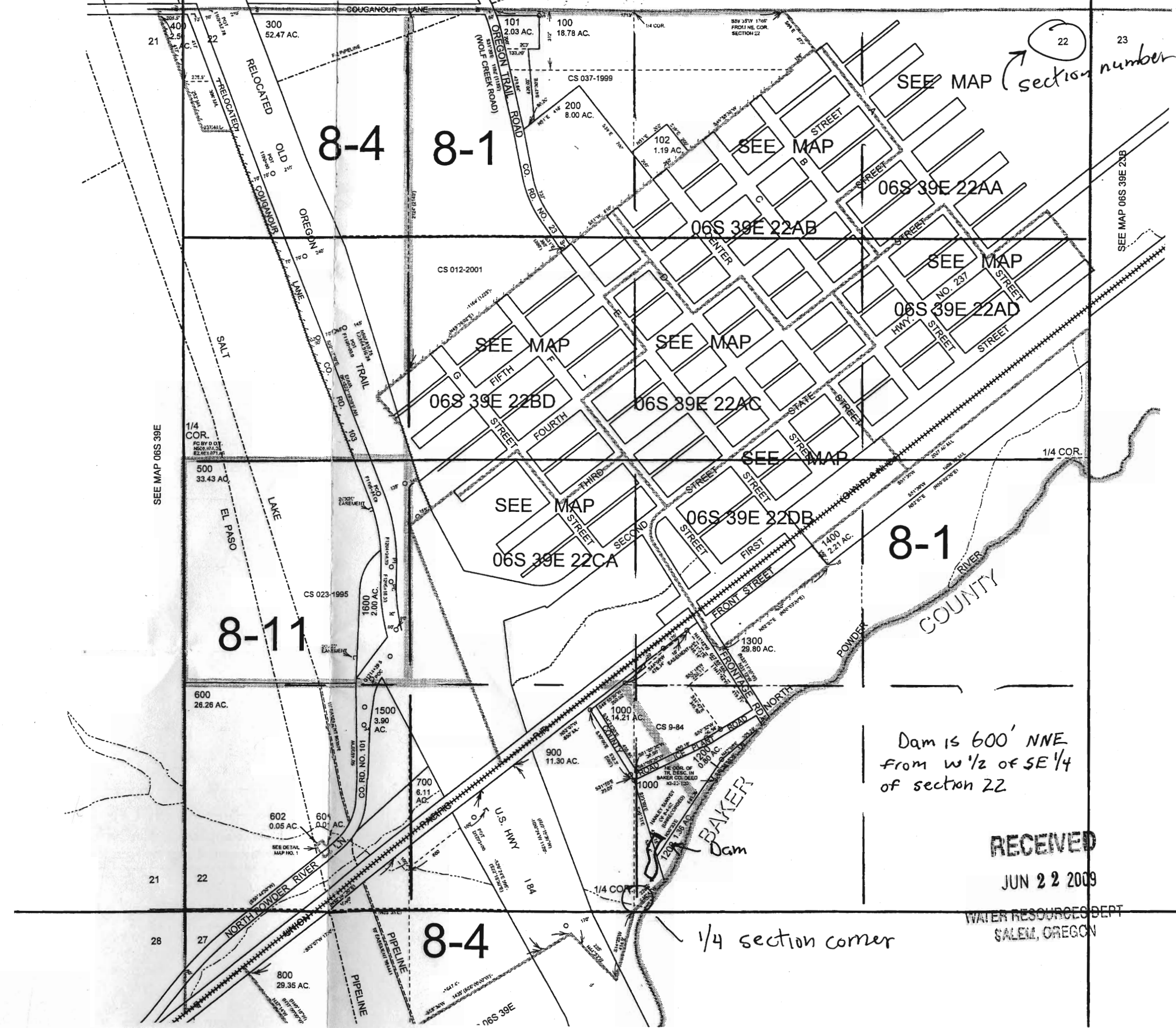


SECTION 22 T.06S. R.39E. W.M. UNION COUNTY

1" = 600'
SEE MAP 06S 39E

CORRECTED APPROX. REVISOR SCALE 1" = 600 FEET

NORTH



SEE MAP (22) section number

Dam is 600' NNE from W 1/2 of SE 1/4 of section 22

RECEIVED

JUN 22 2009

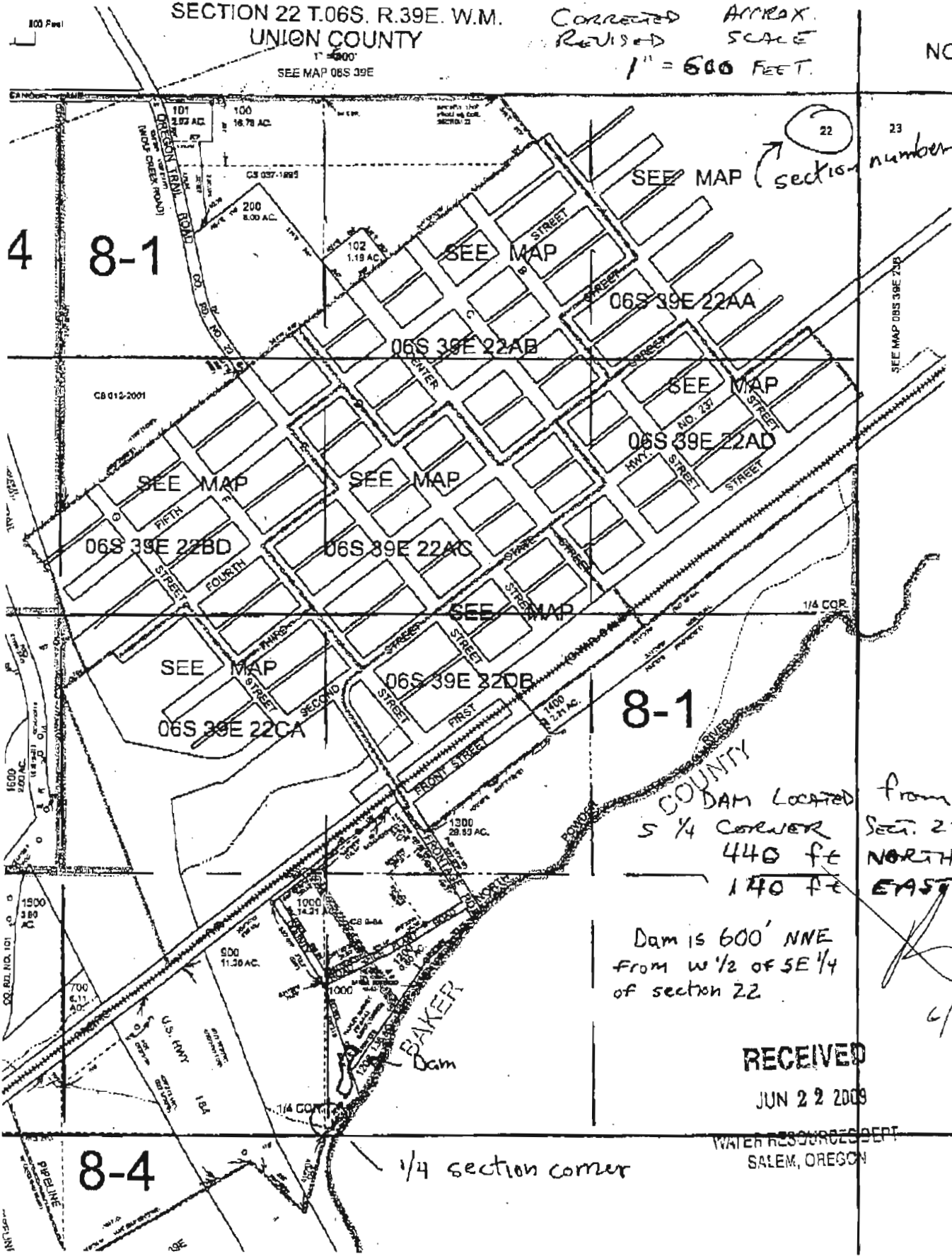
WATER RESOURCES DEPT SALEM, OREGON

RECEIVED JUN 23 2009 WATER RESOURCES DEPT SALEM, OREGON

SECTION 22 T.06S. R.39E. W.M.
UNION COUNTY

CORRECTED APPROX.
REVISED SCALE
1" = 600 FEET.

NORT



8-1

COUNTY DAM LOCATED FROM
S 1/4 CORNER SECT. 22
440 FT NORTH
170 FT EAST

Dam is 600' NNE
FROM W 1/2 OF SE 1/4
OF SECTION 22

6/23/09

RECEIVED
JUN 22 2009

WATER RESOURCES DEPT.
SALEM, OREGON

8-4

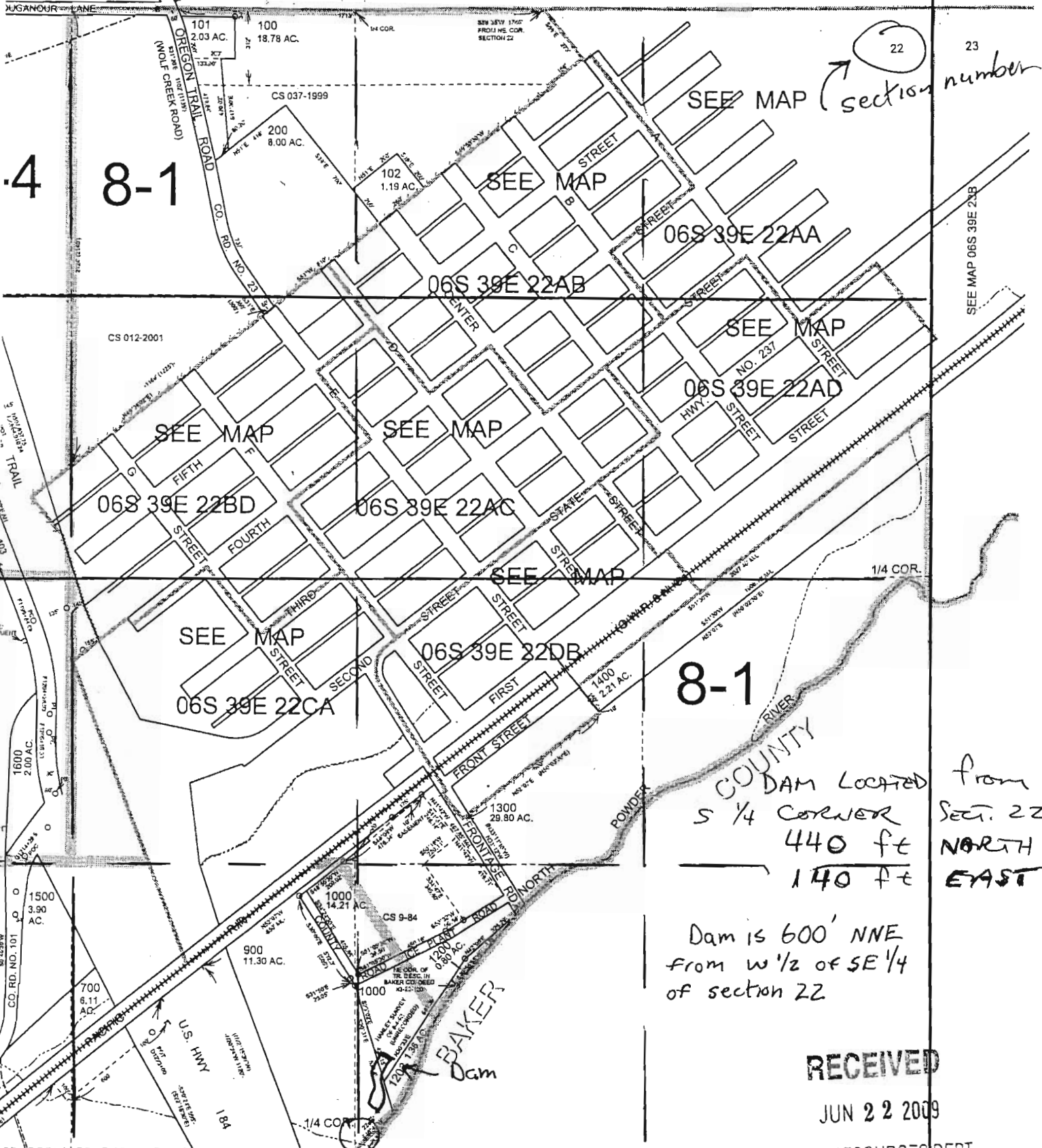
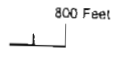
1/4 section corner

SECTION 22 T.06S. R.39E. W.M.
UNION COUNTY

CORRECTED APPROX.
REVISED SCALE
1" = 600 FEET.

NORT

1" = 600'
SEE MAP 06S 39E



SEE MAP (section number) 22

4 8-1

8-1

DAM LOCATED FROM
S 1/4 CORNER SECTION 22
440 ft NORTH
140 ft EAST

Dam is 600' NNE
FROM W 1/2 OF SE 1/4
OF SECTION 22

RECEIVED

JUN 22 2009

WATER RESOURCES DEPT
SALEM, OREGON

8-4

1/4 section corner

PIPELINE