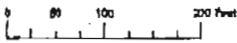


NOT PREPARED FOR
ANY PURPOSE ONLY



NW1/4 SE1/4 SECTION 19 T.18S. R.15E. W.M.
MALHEUR COUNTY

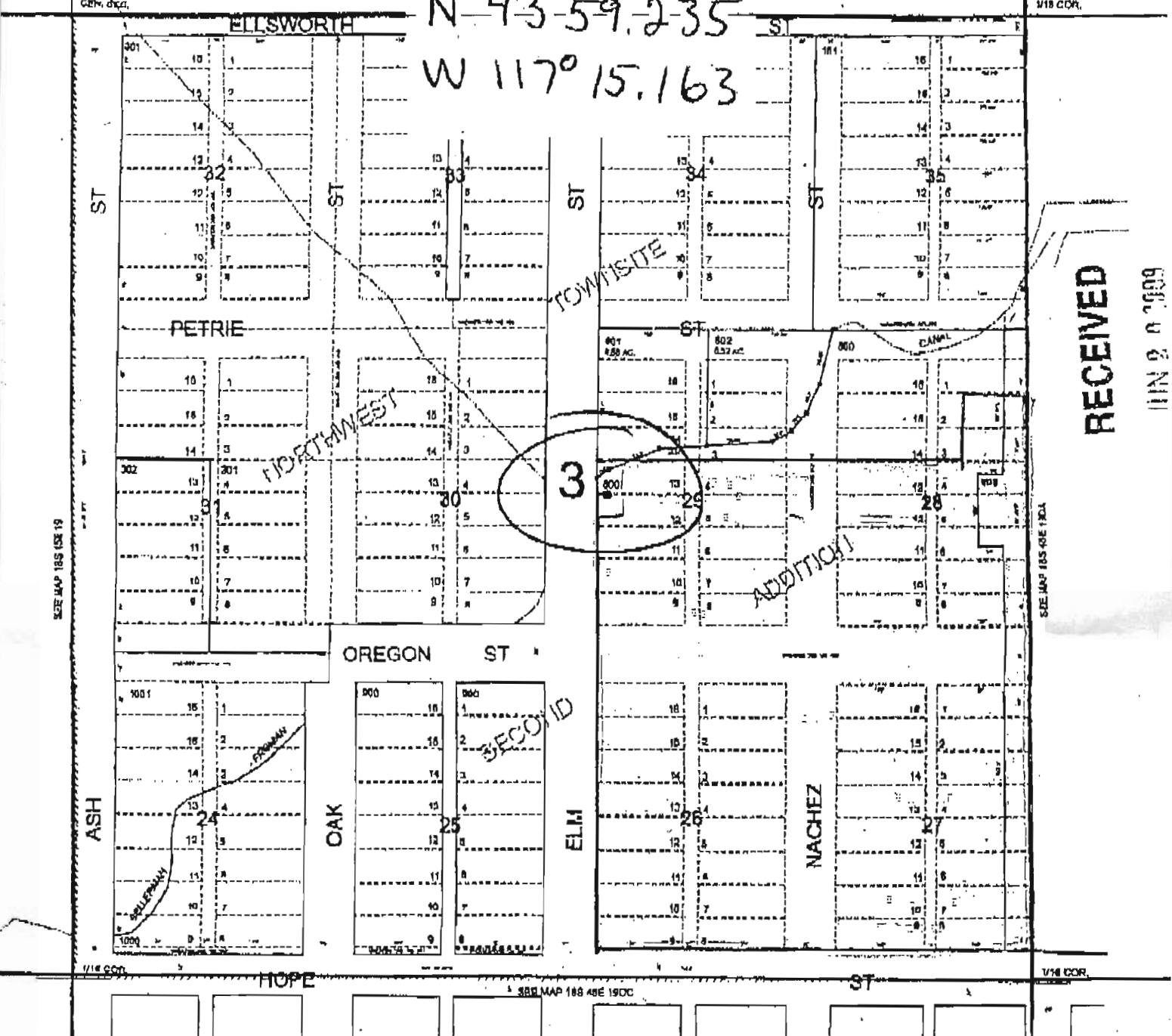
G-1737

REVISED ADJUSTED
CORRECTED SCALE
1" = 200 FT.

Well

(42) 6-24-09

N 43° 59.235
W 117° 15.163



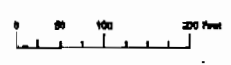
RECEIVED

JUN 2 0 2009

WELL LOCATED FROM CENTER OF SECTION 19
745 FE EAST
655 FE SOUTH

WORK
COPY

MAP PREPARED FOR
JOINT PURPOSE ONLY



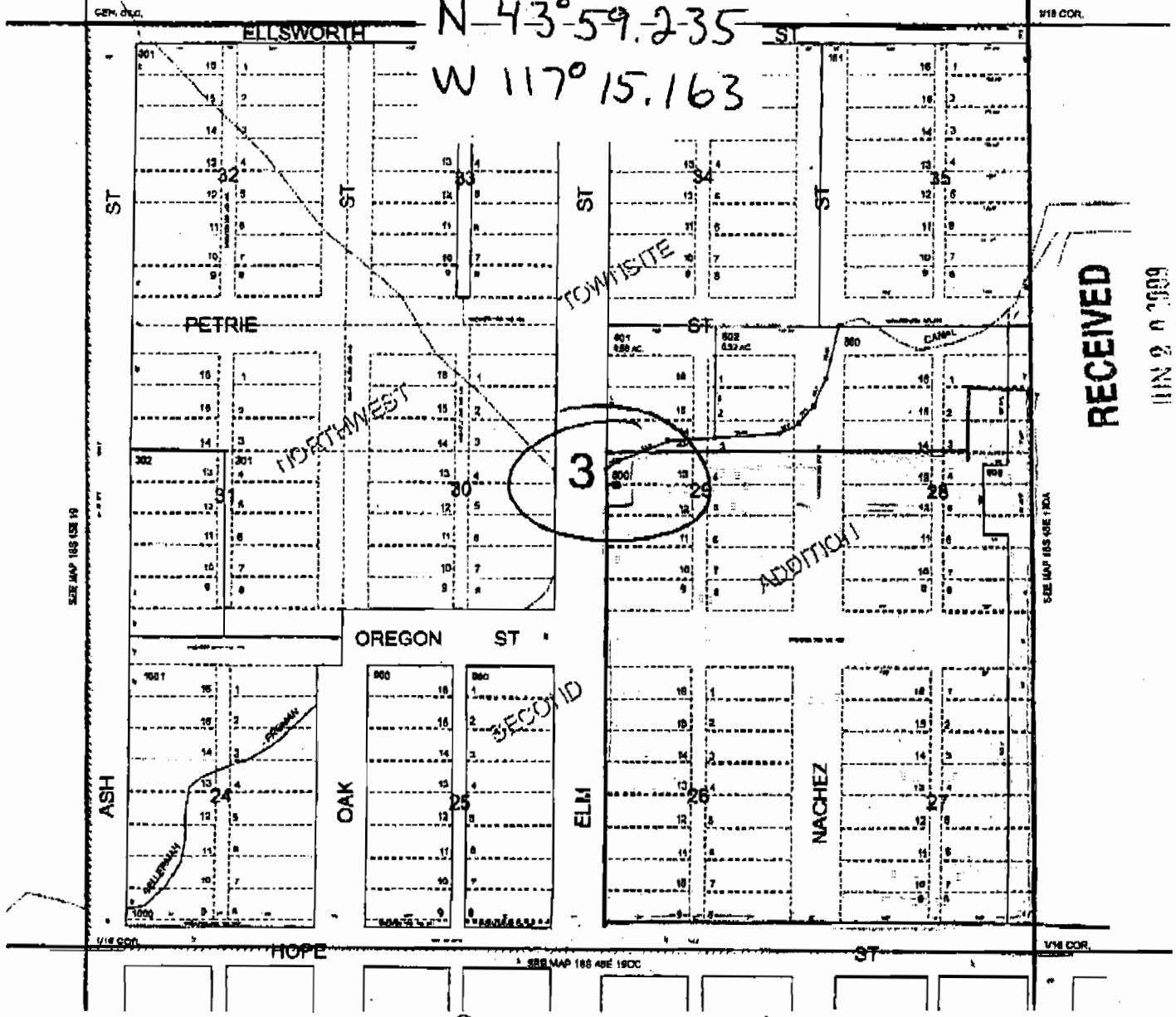
NW1/4 SE1/4 SECTION 19 T.18S. R.15E. W.M.
MALHEUR COUNTY

REVISED ADJUSTED
CORRECTED SCALE
1" = 200 FT.

Well

(48) 6-24-09

N 43° 59.235
W 117° 15.163



WELL LOCATED FROM CENTER OF SECTION 19
745 FE EAST
655 FE SOUTH

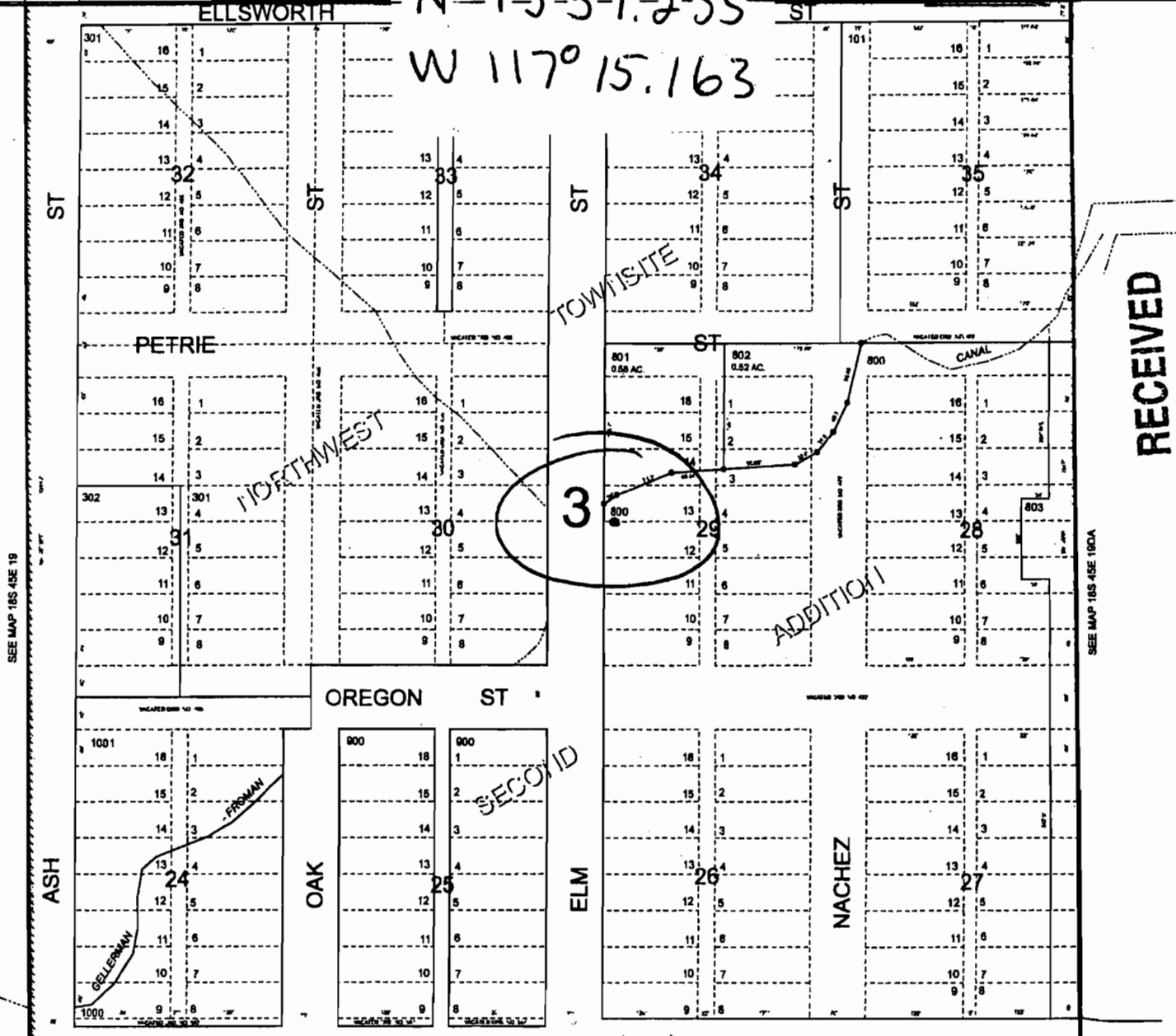
REVISED ADJUSTED
CORRECTED SCALE
1" = 200 FT.

Well

N-43°-59.2-35
W 117° 15.163

CEN. SEC.

1/16 COR.



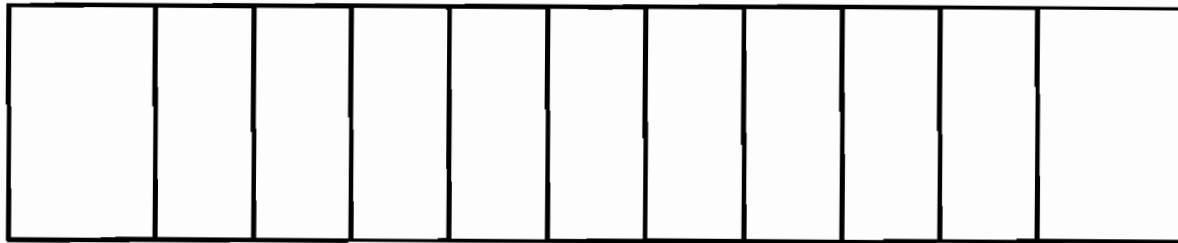
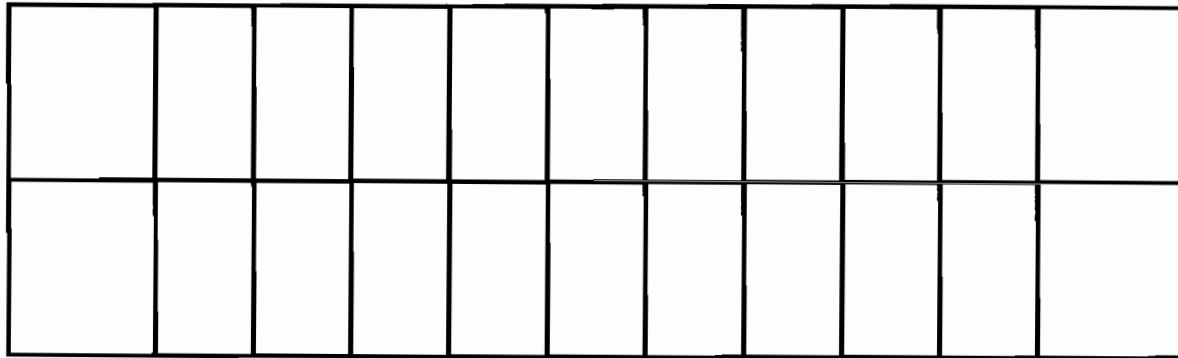
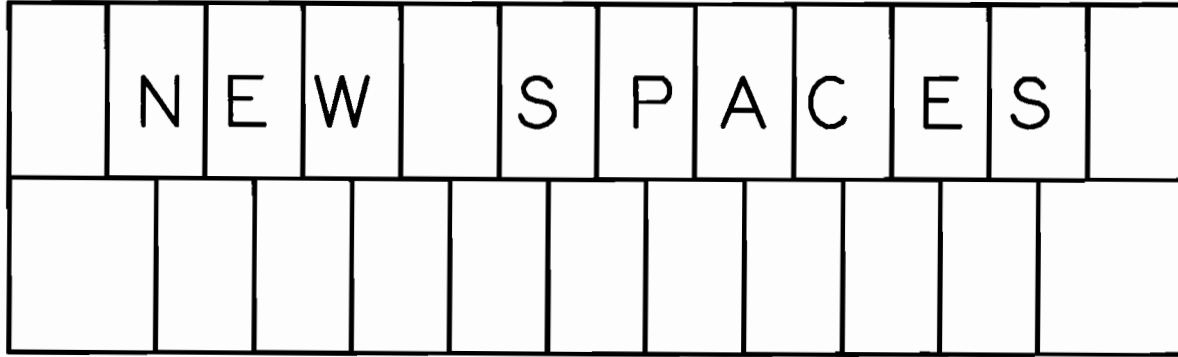
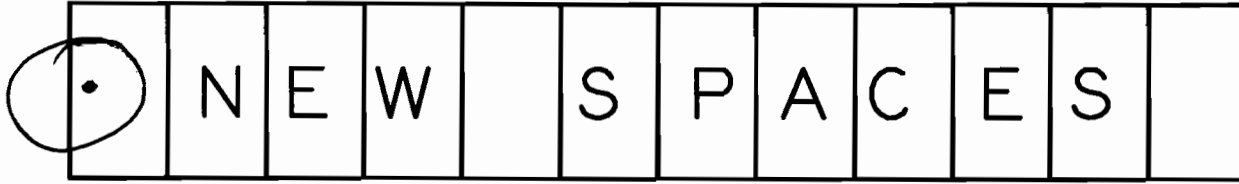
RECEIVED

JUN 20 2009

WELL LOCATED FROM CENTER OF SECTION 19
745 FE EAST
655 FE SOUTH

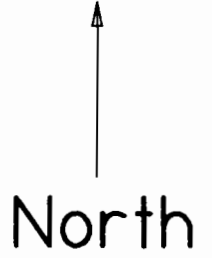
Well
N 43° 59.235
W 117° 15.163

ELM STREET



HOPE STREET

GRAVEL ROAD



RECEIVED
 JUN 20 2009
 WATER RESOURCES DEPT
 SALEM, OREGON

1 Inch
 = 100
 Feet