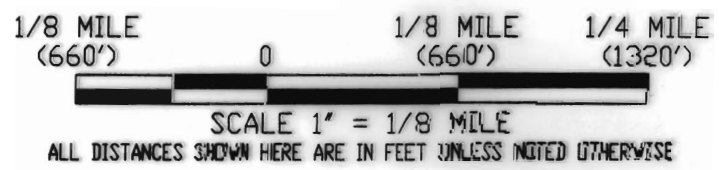


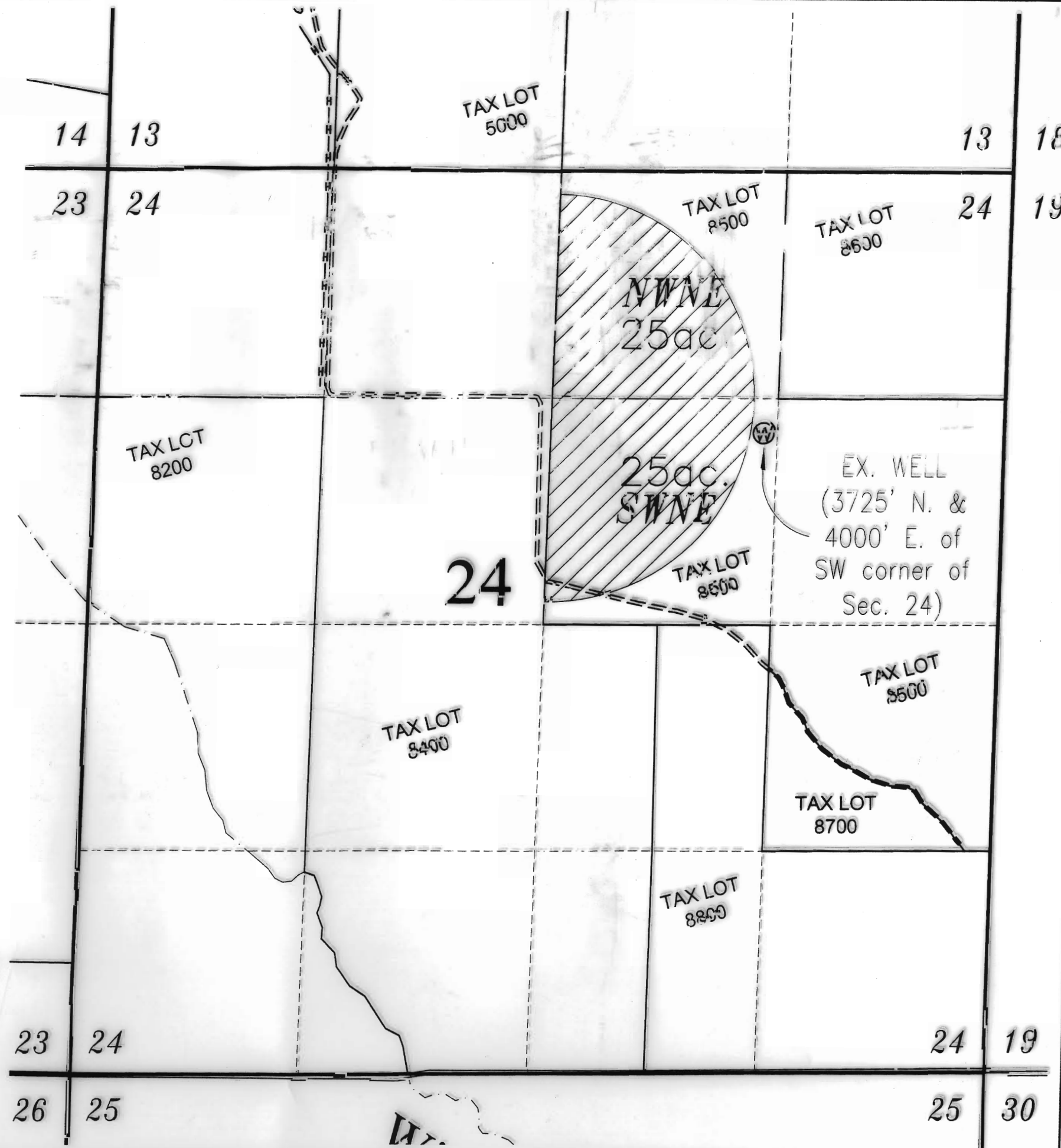
LEGEND	
DISCRIPTION	SYMBOLS
SECTION LINE	—————
QUARTER-QUARTER LINE	- - - - -
TAX LOT LINE	—————
CONCRETE DITCH	— — — — —
CANAL	=====
IRRIGATION PIPE	— — — — —
SECTION CORNER	36 31 + 1 6
IRRIGATION WELL	●
PROPOSED PRIMARY WATER RIGHT AREA	▨



RECEIVED
JUN 29 2009
WATER RESOURCES DEPT
SALEM, OREGON

DISCLAIMER

I, STEWART R. EDWARDS, HEREBY CERTIFY: THAT THIS MAP WAS MADE TO BE PART OF THE APPLICATION FOR WATER RIGHTS. SECTIONAL LINES SHOWN ARE APPROXIMATE AND THIS MAP IS NOT INTENDED FOR ANY OTHER USE AND DOES NOT GUARANTEE LAND OWNERSHIP.



THIS DRAWING, IN WHOLE OR IN PART, IS THE PROPERTY OF CKS, LLC. ALL RIGHTS ARE EXPRESSLY RESERVED & IT MAY NOT BE REPRODUCED OR TRANSMITTED IN ANY FORM OR BY ANY MEANS WITHOUT THE WRITTEN CONSENT OF CKS, LLC.

ENG. BY:	STU EDWARDS
APP. BY:	PW
JWG BY:	06/23/09
DATE:	

#	REVISION	DATE
2		
3		
4		

APPLICATION MAP
T 16S, R 43E,
SEC. 24, T. 16M.
WALHEAR COUNTY, OREGON

CKS, LLC
368 S.W. 5th Avenue
Ontario, Oregon 97914
Phn: (541) 889-5411
Fax: (541) 889-2074
CIVIL-STRUCTURAL-ELECTRICAL
ENGINEERING, SURVEYING & PLANNING

AA-PON ARRIOLA
2445 12 AVE. EAST
VALE, OREGON 97258

WR-1
SHEET: 1 OF 1
JOB: CO-08021