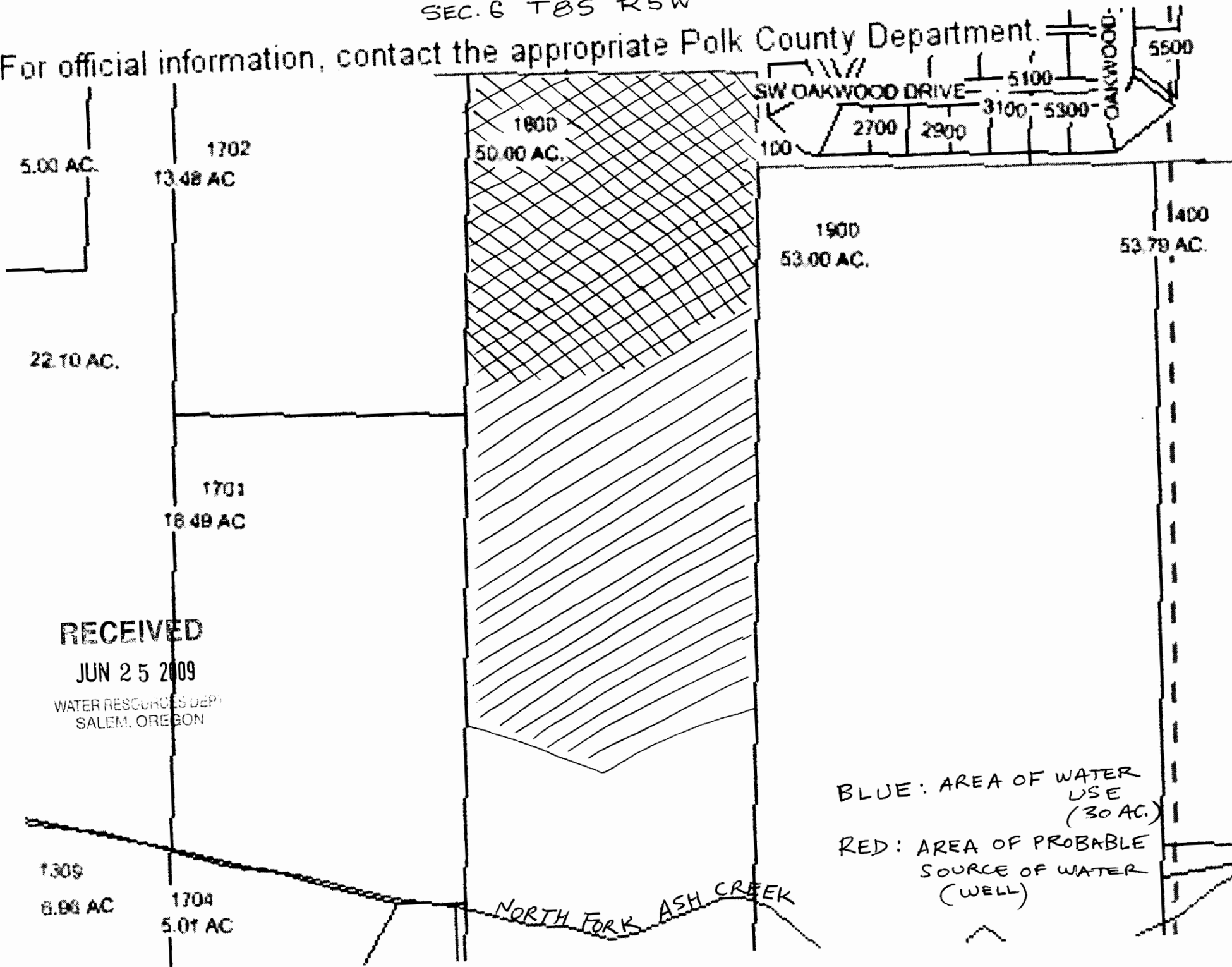


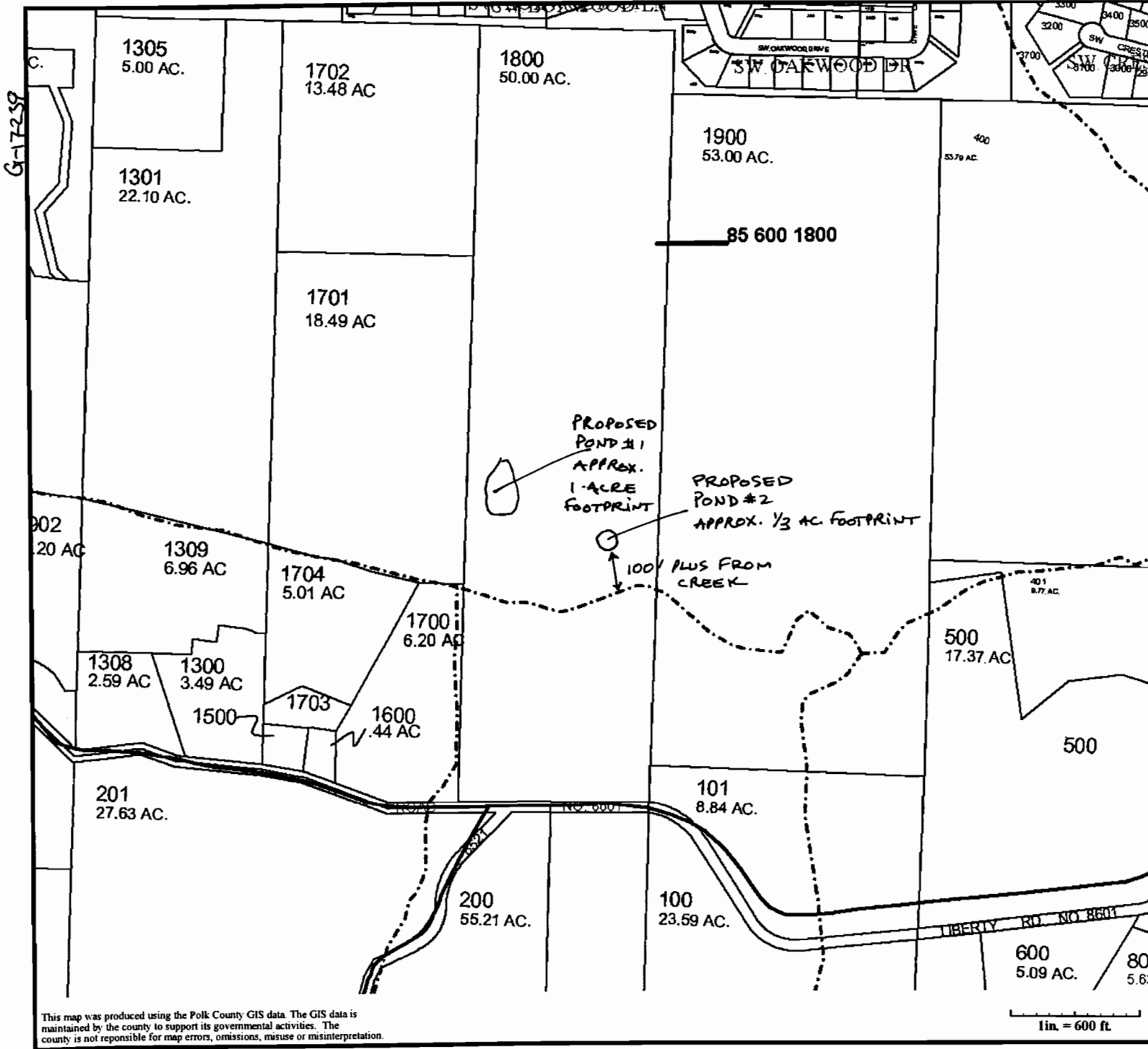
SEC. 6 T8S R5W

For official information, contact the appropriate Polk County Department.



BLUE: AREA OF WATER USE (30 AC.)

RED: AREA OF PROBABLE SOURCE OF WATER (WELL)



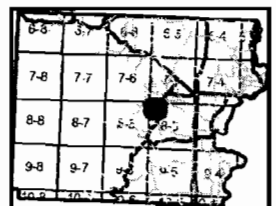
Polk County Map

8.5.6

- Roads
- OTHER
- STATEHWY
- CO-PAVED
- Taxlot#09
- Taxlot Arrows09
- Taxlot Boundary5
- taxlot09
- Water

RECEIVED
 JUN 25 2009

WATER RESOURCES DEP
 SALEM, OREGON



This map was produced using the Polk County GIS data. The GIS data is maintained by the county to support its governmental activities. The county is not responsible for map errors, omissions, misuse or misinterpretation.

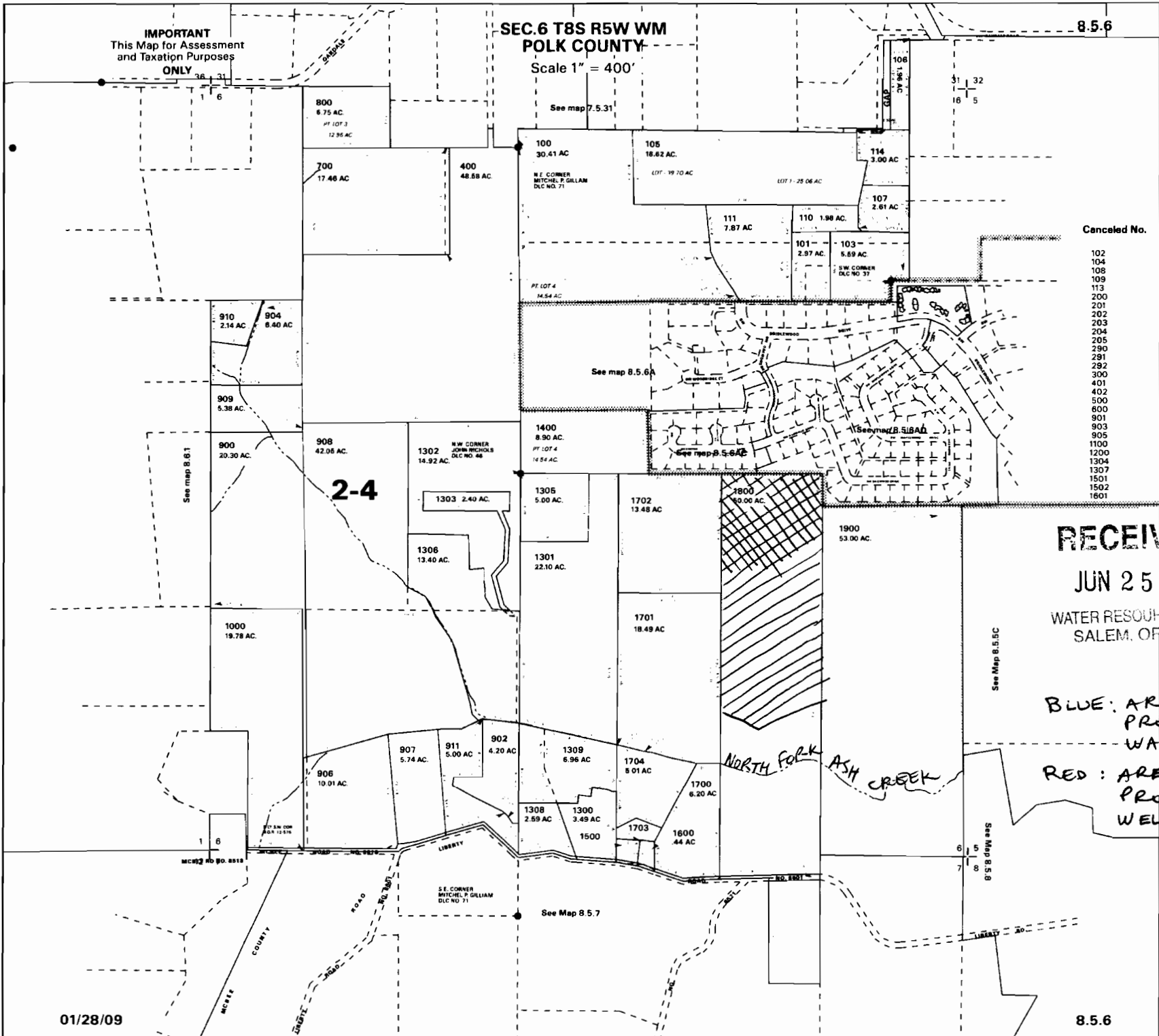
6/25/2009

1 in. = 600 ft.

IMPORTANT
This Map for Assessment
and Taxation Purposes
ONLY

**SEC. 6 T8S R5W WM
POLK COUNTY**
Scale 1" = 400'

8.5.6



Canceled No.

- 102
- 104
- 108
- 109
- 113
- 200
- 201
- 202
- 203
- 204
- 205
- 290
- 291
- 292
- 300
- 401
- 402
- 500
- 600
- 901
- 903
- 905
- 1100
- 1200
- 1300
- 1304
- 1307
- 1501
- 1502
- 1601

RECEIVED

JUN 25 2009

WATER RESOURCES DEPT
SALEM, OREGON

BLUE: AREA OF
PROPOSED
WATER USE
(30 AC.)
RED: AREA OF
PROBABLE
WELL (SOURCE
OF WATER)

01/28/09

8.5.6

517289

IMPORTANT
This Map for Assessment
and Taxation Purposes
ONLY

SEC. 6 T8S R5W WM
POLK COUNTY

Scale 1" = 400'

8.5.6



Canceled No.

- 102
- 104
- 106
- 108
- 109
- 113
- 200
- 201
- 202
- 203
- 204
- 205
- 290
- 281
- 402
- 500
- 600
- 801
- 803
- 805
- 1100
- 1200
- 1304
- 1307
- 1501
- 1502
- 1601

RECEIVED

JUN 25 2009

WATER RESOURCES DEPT.
SALEM, OREGON

See map 8.5.1

2-4

See map 8.5.6

See map 8.5.6

See Map 8.5.5C

See Map 8.5.5C

See Map 8.5.7

PROPOSED WELL
LOCATED
2310' NORTH
1450' WEST
FROM SE CORNER
SECTION 6.

BLUE: AREA OF
PROPOSED
WATER USE
(30 AC.)
RED: AREA OF
PROBABLE
WELL (SOURCE
OF WATER)

01/28/09

8.5.6

65271-9

BC

