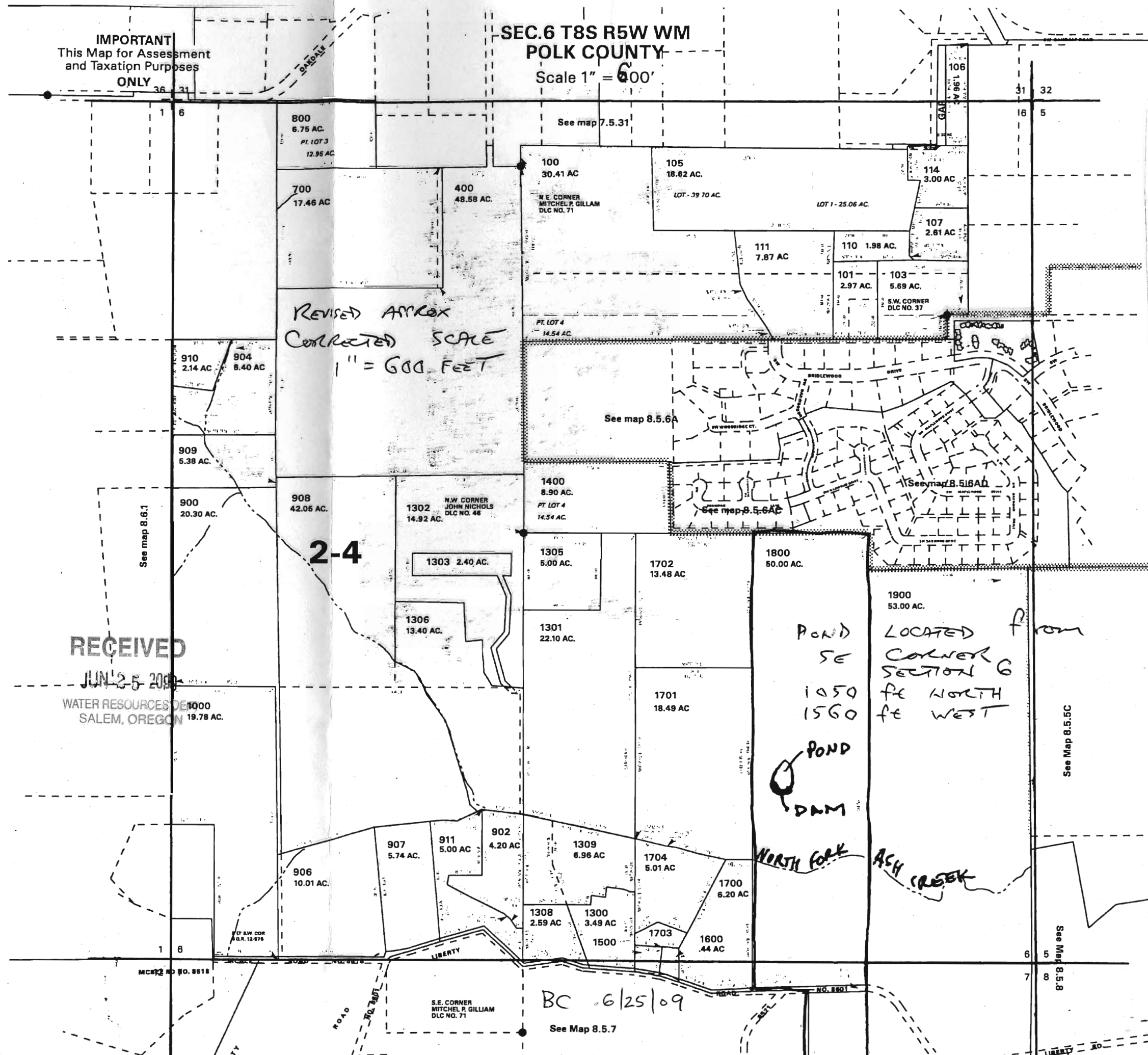




IMPORTANT  
This Map for Assessment  
and Taxation Purposes  
ONLY

SEC. 6 T8S R5W WM  
POLK COUNTY

Scale 1" = 600'



REVISED APPROX  
CORRECTED SCALE  
1" = 600 FEET

2-4

POND  
DAM  
NORTH FORK ASH CREEK  
POND LOCATED FROM  
SE CORNER SECTION 6  
1050 FE NORTH  
1560 FE WEST

RECEIVED

JUN 25 2009

WATER RESOURCES DEPT  
SALEM, OREGON

BC 6/25/09

See Map 8.5.7

See map 8.6.1

See map 7.5.31

See map 8.5.6A

See map 8.5.6A

See Map 8.5.5C

See Map 8.5.8

800  
6.75 AC.  
PT. LOT 3  
12.96 AC

700  
17.46 AC

400  
48.58 AC

100  
30.41 AC  
N.E. CORNER  
MITCHEL P. GILLAM  
DLC NO. 71

105  
18.62 AC.  
LOT - 39 70 AC

114  
3.00 AC

107  
2.81 AC

111  
7.87 AC

110  
1.98 AC.

101  
2.97 AC.

103  
5.69 AC.  
S.W. CORNER  
DLC NO. 37

910  
2.14 AC

904  
8.40 AC

909  
5.38 AC.

900  
20.30 AC.

908  
42.05 AC.

1302  
14.92 AC.  
N.W. CORNER  
JOHN NICHOLS  
DLC NO. 48

1400  
8.90 AC.  
PT. LOT 4  
14.54 AC

1303  
2.40 AC.

1305  
5.00 AC.

1702  
13.48 AC

1800  
50.00 AC.

1900  
53.00 AC.

1306  
13.40 AC.

1301  
22.10 AC.

1701  
18.49 AC

907  
5.74 AC.

911  
5.00 AC

902  
4.20 AC

1309  
6.96 AC

1704  
5.01 AC

906  
10.01 AC.

1308  
2.69 AC

1300  
3.49 AC

1700  
6.20 AC

1700  
6.20 AC

1500

1703

1600  
.44 AC

S.E. CORNER  
MITCHEL P. GILLIAM  
DLC NO. 71

MCM2 NO. 8518

NO. 1801

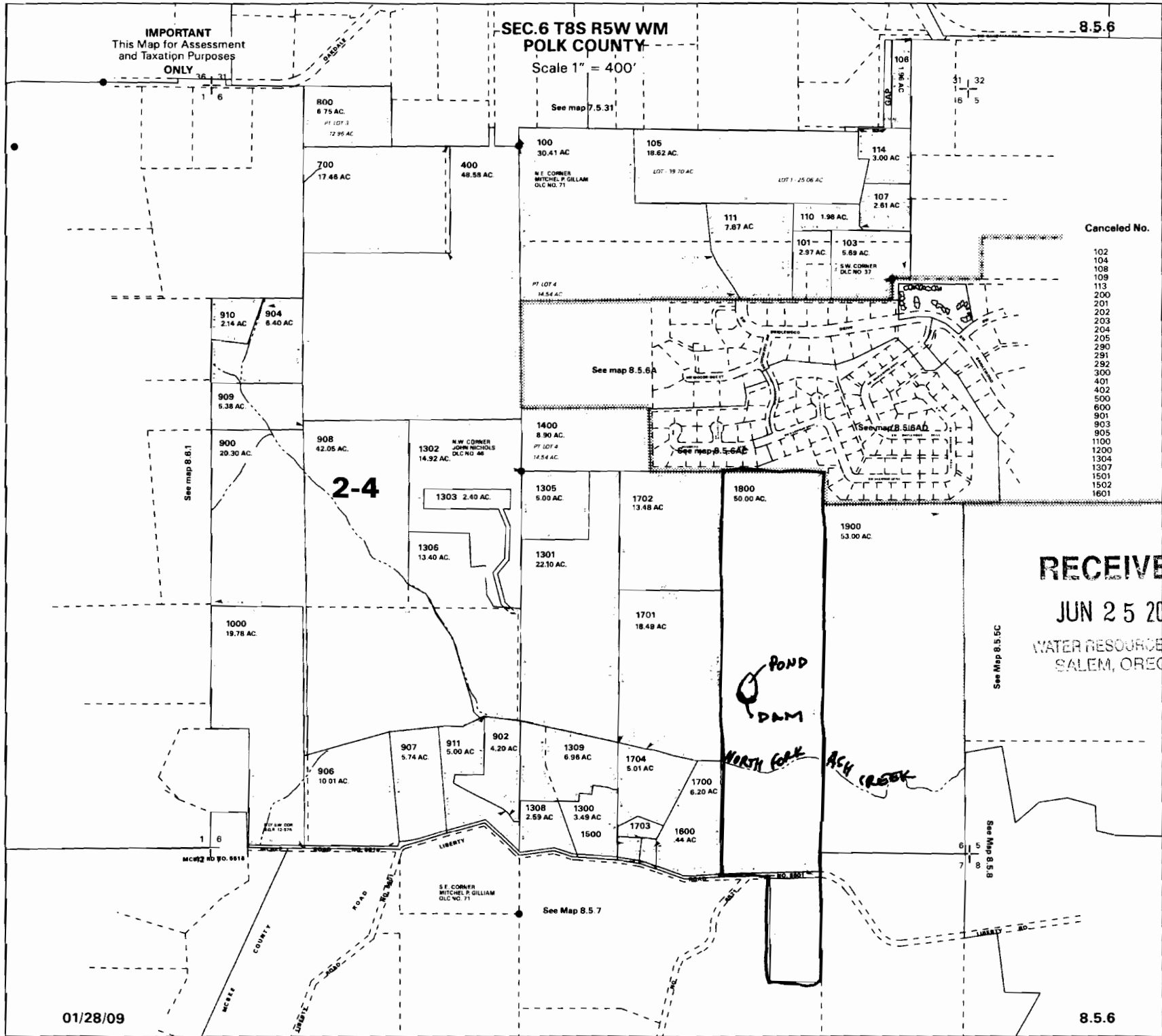
LIBERTY RD.

**IMPORTANT**  
This Map for Assessment  
and Taxation Purposes  
**ONLY**

**SEC. 6 T8S R5W WM  
POLK COUNTY**

Scale 1" = 400'

8.5.6



Canceled No.

- 102
- 104
- 108
- 109
- 113
- 200
- 201
- 202
- 203
- 204
- 205
- 290
- 291
- 292
- 300
- 401
- 402
- 500
- 600
- 901
- 903
- 905
- 1100
- 1200
- 1304
- 1307
- 1501
- 1502
- 1601

**RECEIVED**

**JUN 25 2009**

WATER RESOURCES DEPT  
SALEM, OREGON

01/28/09

8.5.6