

IMPORTANT  
This Map for Assessment  
and Taxation Purposes  
ONLY

SEC. 6 T8S R5W WM  
POLK COUNTY

Scale 1" = 600'

See map 7.5.31

REVISED APPROX  
COLLECTED SCALE  
1" = 600 FT.

RECEIVED  
JUN 25 2009  
WATER RESOURCES DEPT  
SALEM, OREGON

See map 8.6.1

2-4

See map 8.5.6A

See map 8.5.6A

See map 8.5.6AD

POND LOCATED FROM SE CORNER  
SECTION 6  
2,240 FE NORTH  
1,150 FE WEST

RECEIVED  
OCT 27 2010  
WATER RESOURCES DEPT  
SALEM, OREGON

Please amend  
the reservoir location  
to reflect these new  
coordinates.

188

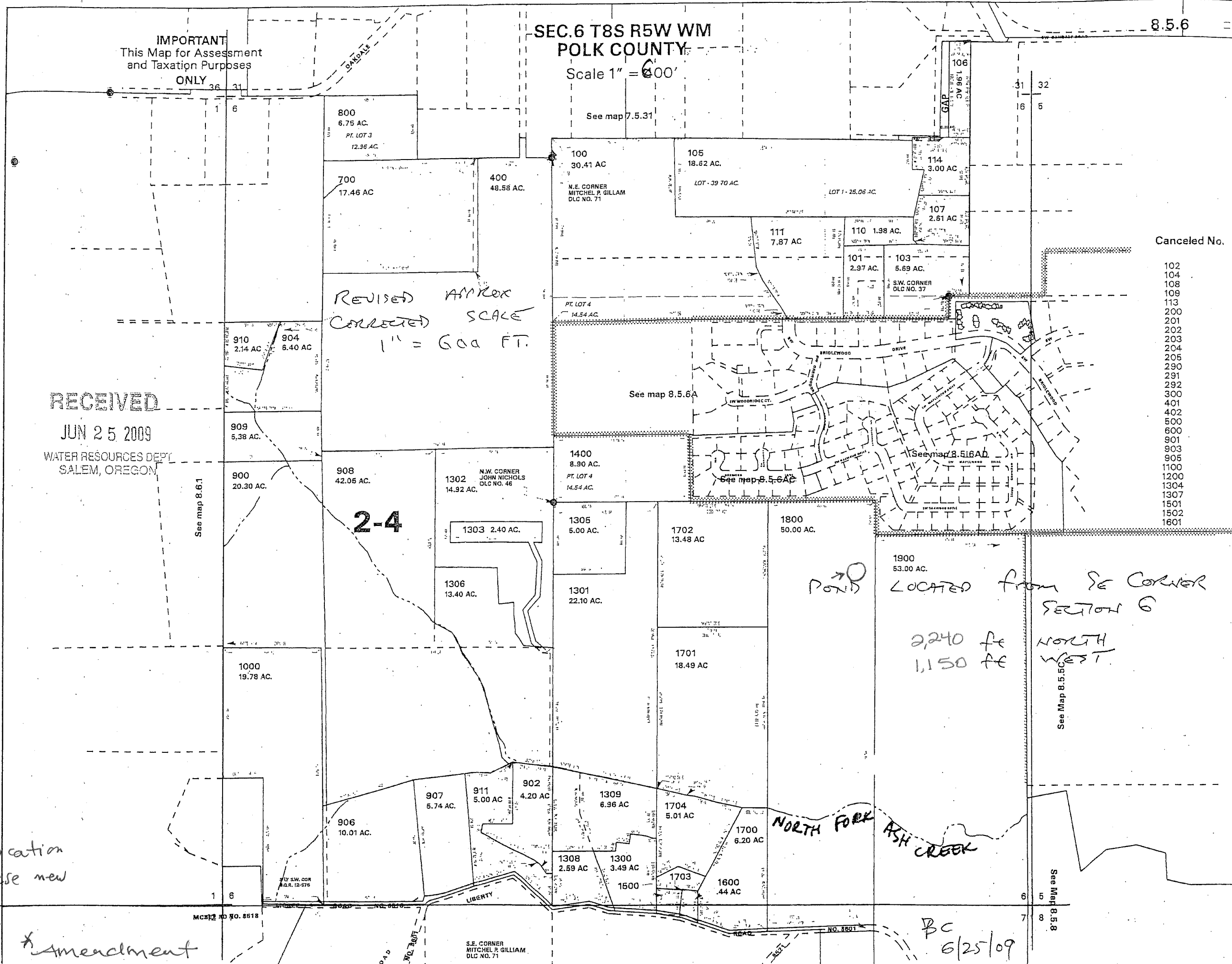
\* amendment

R-87479

BC  
6/25/09

Cancelled No.

- 102
- 104
- 108
- 109
- 113
- 200
- 201
- 202
- 203
- 204
- 205
- 290
- 291
- 292
- 300
- 401
- 402
- 500
- 600
- 901
- 903
- 905
- 1100
- 1200
- 1304
- 1307
- 1501
- 1502
- 1601



IMPORTANT  
This Map for Assessment  
and Taxation Purposes  
ONLY

SEC. 6 T8S R5W WM  
POLK COUNTY  
Scale 1" = 600'

8.5.6

RECEIVED  
JUN 25 2009  
WATER RESOURCES DEPT  
SALEM, OREGON

REVISED APPROX  
CORRECTED SCALE  
1" = 600 FT.

Canceled No.

- 102
- 104
- 108
- 109
- 113
- 200
- 201
- 202
- 203
- 204
- 205
- 290
- 291
- 292
- 300
- 401
- 402
- 500
- 600
- 901
- 903
- 905
- 1100
- 1200
- 1304
- 1307
- 1501
- 1502
- 1601

See map 8.6.1

2-4

See map 8.5.6A

See map 8.5.6A

See map 8.5.6A

POND LOCATED FROM SE CORNER  
SECTION 6

800 FE NORTH  
1200 FE WEST

See Map 8.5.6C

POND

NORTH FORK ASH CREEK

See Map 8.5.8

BC  
6/25/09

See Map 8.5.7

MCBE NO. 8518

S.E. CORNER  
MITCHEL P. GILLIAM  
DLC NO. 71

800  
6.75 AC.  
PT. LOT 3  
12.96 AC.

700  
17.46 AC.

400  
48.58 AC.

100  
30.41 AC.  
N.E. CORNER  
MITCHEL P. GILLIAM  
DLC NO. 71

105  
18.62 AC.  
LOT - 39.70 AC.

114  
3.00 AC.

107  
2.61 AC.

111  
7.87 AC.

110  
1.98 AC.

103  
5.69 AC.  
S.W. CORNER  
DLC NO. 37

PT. LOT 4  
14.54 AC.

910  
2.14 AC.

904  
6.40 AC.

909  
5.38 AC.

900  
20.30 AC.

908  
42.05 AC.

1302  
14.92 AC.  
N.W. CORNER  
JOHN NICHOLS  
DLC NO. 46

1400  
8.90 AC.  
PT. LOT 4  
14.54 AC.

1303  
2.40 AC.

1305  
5.00 AC.

1702  
13.48 AC.

1800  
50.00 AC.

1306  
13.40 AC.

1301  
22.10 AC.

1000  
19.78 AC.

1701  
18.49 AC.

907  
5.74 AC.

911  
5.00 AC.

902  
4.20 AC.

1309  
6.96 AC.

1704  
5.01 AC.

906  
10.01 AC.

1700  
6.20 AC.

1308  
2.59 AC.

1300  
3.49 AC.

1703

1600  
.44 AC.

S.E. CORNER  
MITCHEL P. GILLIAM  
DLC NO. 71

IMPORTANT  
This Map for Assessment  
and Taxation Purposes  
ONLY

SEC. 6 T8S R5W WM  
POLK COUNTY

Scale 1" = 400'

8.5.6

See map 7.5.31

800  
6.75 AC.  
PT. LOT 3  
12.95 AC.

700  
17.46 AC.

400  
48.58 AC.

100  
30.41 AC.  
N.E. CORNER  
MITCHEL P. GILLIAM  
DLC NO. 71

105  
18.62 AC.  
LOT 1 - 79.70 AC.

114  
3.00 AC.

107  
2.81 AC.

111  
7.87 AC.

110  
1.98 AC.

101  
2.97 AC.

103  
5.69 AC.  
S.W. CORNER  
DLC NO. 37

PT. LOT 4  
14.54 AC.

See map 8.5.6A

910  
2.14 AC.

904  
6.40 AC.

909  
5.38 AC.

900  
20.30 AC.

908  
42.05 AC.

1302  
14.92 AC.  
N.W. CORNER  
JIMMIE NICHOLS  
DLC NO. 46

1303  
2.40 AC.

1400  
8.90 AC.  
PT. LOT 4  
74.54 AC.

1305  
5.00 AC.

1702  
13.48 AC.

1800  
50.00 AC.

1900  
53.00 AC.

1306  
13.40 AC.

1301  
22.10 AC.

1701  
18.49 AC.

1000  
19.78 AC.

906  
10.01 AC.

907  
5.74 AC.

911  
5.00 AC.

902  
4.20 AC.

1309  
6.98 AC.

1704  
5.01 AC.

1700  
6.20 AC.

1308  
2.69 AC.

1300  
3.49 AC.

1500

1703

1600  
44 AC.

S.E. CORNER  
MITCHEL P. GILLIAM  
DLC NO. 71

See Map 8.5.7

Canceled No.

- 102
- 104
- 108
- 109
- 113
- 200
- 201
- 202
- 203
- 204
- 205
- 290
- 291
- 292
- 300
- 401
- 402
- 500
- 600
- 901
- 903
- 905
- 1100
- 1200
- 1304
- 1307
- 1501
- 1502
- 1601

RECEIVED

JUN 25 2009

WATER RESOURCES DEPT  
SALEM, OREGON

2-4

POND

NORTH FORK  
ASH CREEK

See Map 8.5.5C

See Map 8.5.8

01/28/09

8.5.6