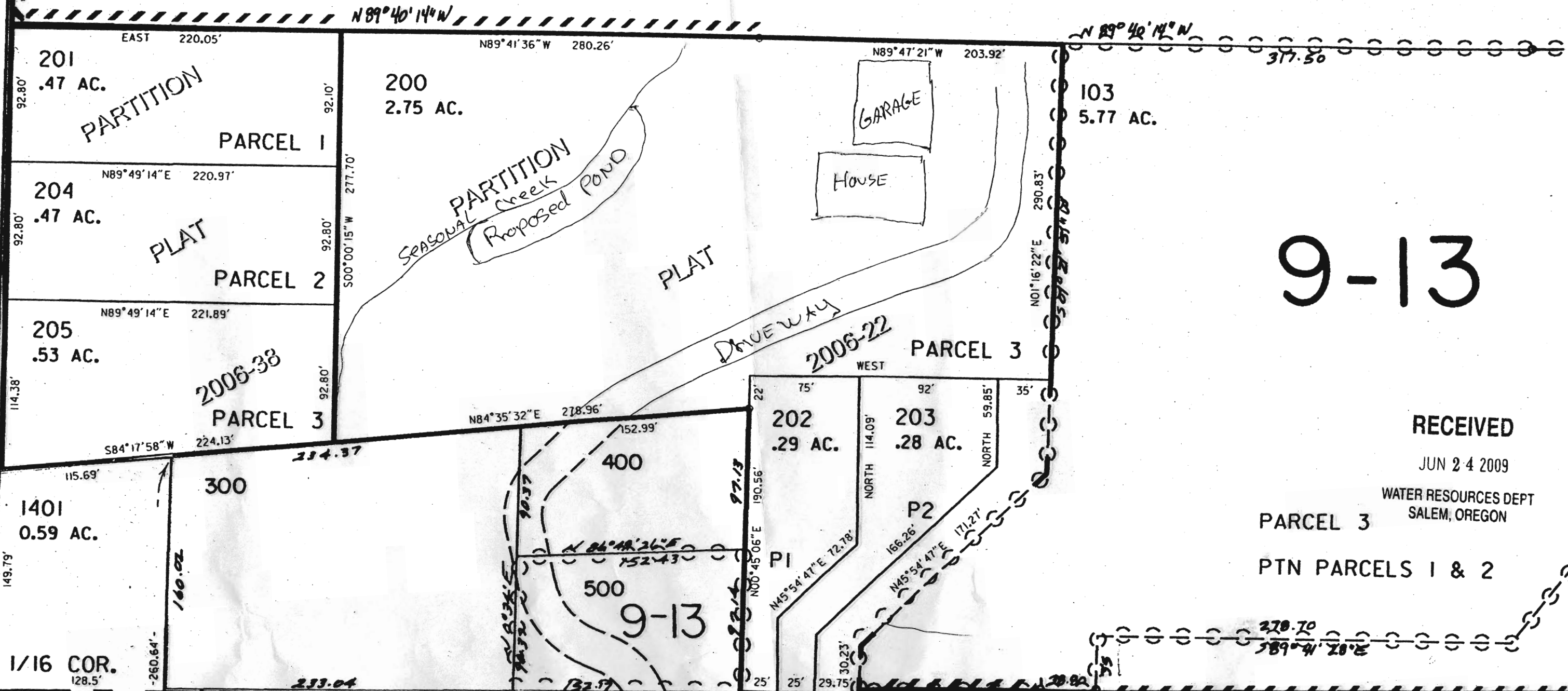


PTN PARCEL 1 W + S + E T.1S 10W 32T1S TAX LOT 200 R2
R-87477



9-13

RECEIVED

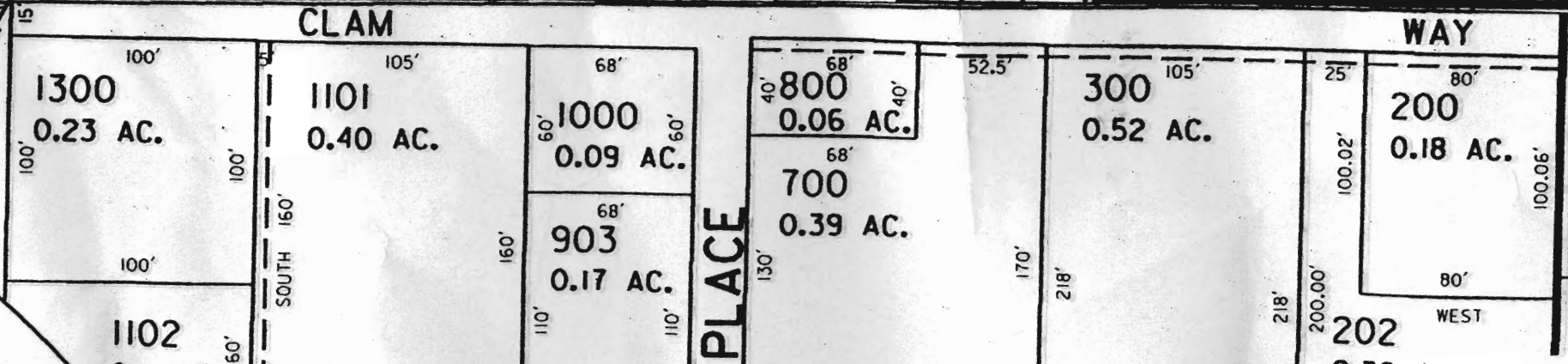
JUN 24 2009

WATER RESOURCES DEPT
SALEM, OREGON

PARCEL 3

PTN PARCELS 1 & 2

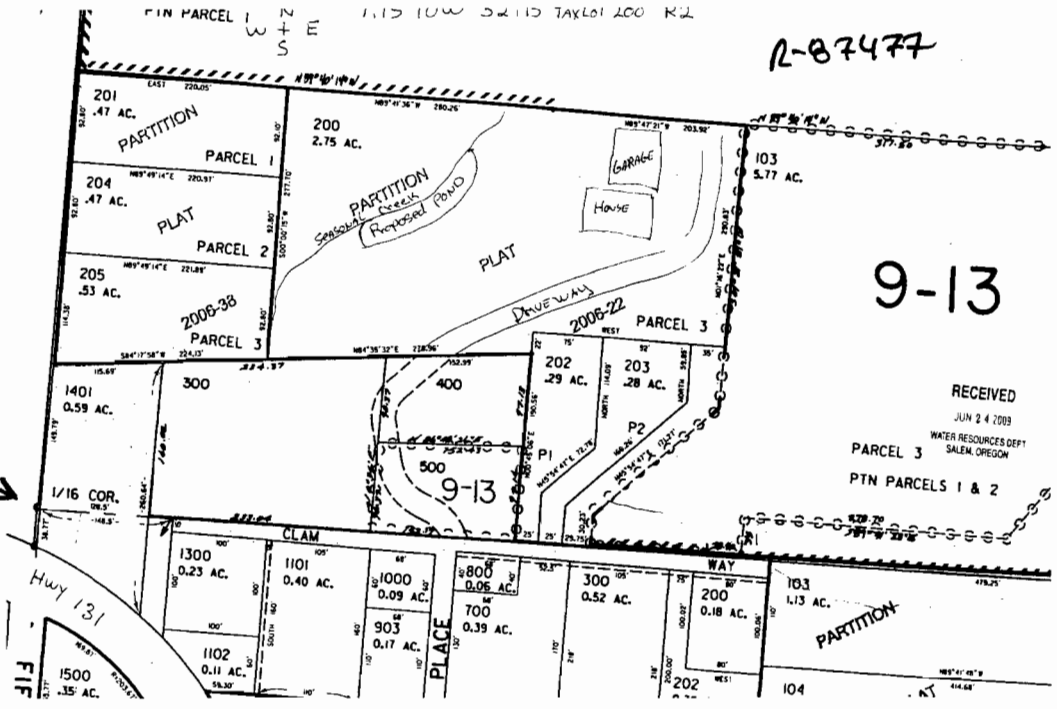
Hwy 131



PARTITION

AT 414.68'

THIS 1/16 CORNER



CORRECTED REISED
APPROX SCALE
1" = 200 FT

CENTER of POND
LOCATED from 1/16 CORNER
370 ft EAST
330 ft NORTH