



T.22 S., R.46 E., SECTION 14, W.M.  
TAX LOTS 200 AND 300  
MALHEUR COUNTY, OREGON  
1"= 1320'

**NOTE:**  
THIS MAP IS FOR THE PURPOSE OF LOCATING A WATER  
RIGHT ONLY AND IS NOT INTENDED TO PROVIDE LEGAL  
DIMENSIONS OR LOCATIONS OF PROPERTY LINES.

**PLACE OF USE:**

SE 1/4, NW 1/4 SECTION 14  
NE 1/4, SW 1/4 SECTION 14  
SW 1/4 NE 1/4 SECTION 14  
NW 1/4 SE 1/4 SECTION 14

**LEGEND**

— SECTION LINE  
— 1/4 SECTION LINE OR 1/16 SECTION LINE

THE POINT OF DIVERSION IS LOCATED 3800 FT. SOUTH  
AND 2900 FT. WEST OF THE NORTHEAST CORNER OF  
SECTION 14.

**WATER QUANTITY STORAGE AT MAXIMUM CAPACITY**

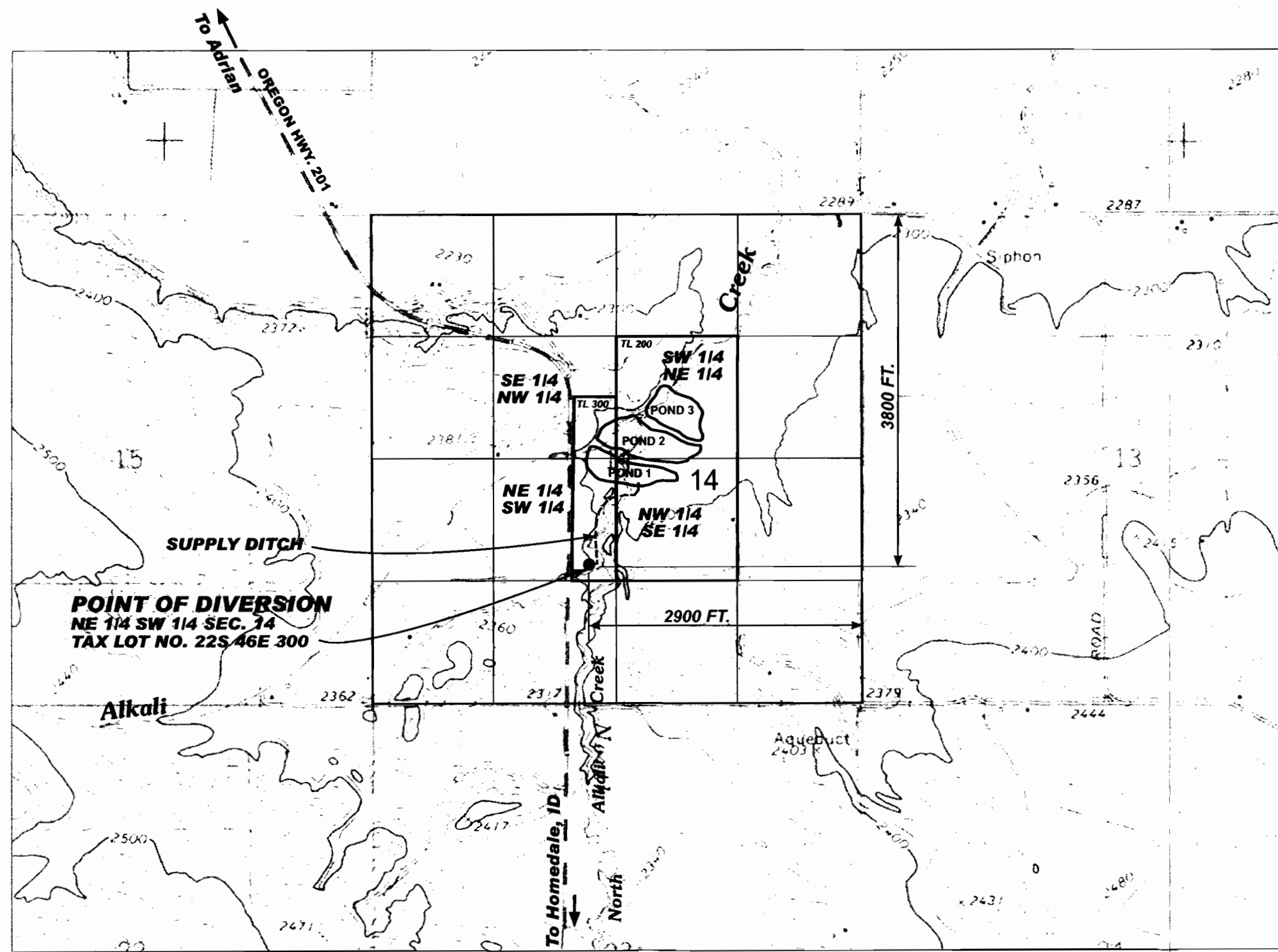
POND 1 = 9.2 ACRE-FEET  
POND 2 = 13.5 ACRE-FEET  
POND 3 = 7.4 ACRE-FEET

TOTAL ACRE FEET = 30.1

**RECEIVED**

JUN 26 2009

WATER RESOURCES DEPT  
SALEM, OREGON



DENNIS WERNER  
ALKALI CREEK WETLANDS  
PERMIT APPLICATION - ALTERNATE REVIEW  
**ALTERNATE RESERVOIR APPLICATION  
MAP**

**FIGURE  
1**