



**T.22 S., R.46 E., SECTION 14, W.M.
TAX LOTS 200 AND 300
MALHEUR COUNTY, OREGON
1"= 1320'**

**NOTE:
THIS MAP IS FOR THE PURPOSE OF LOCATING A WATER
RIGHT ONLY AND IS NOT INTENDED TO PROVIDE LEGAL
DIMENSIONS OR LOCATIONS OF PROPERTY LINES.**

PLACE OF USE:

SE 1/4, NW 1/4 SECTION 14
NE 1/4, SW 1/4 SECTION 14
SW 1/4 NE 1/4 SECTION 14
NW 1/4 SE 1/4 SECTION 14

LEGEND

———— SECTION LINE
———— 1/4 SECTION LINE OR 1/16 SECTION LINE

**THE POINT OF DIVERSION IS LOCATED 3800 FT. SOUTH
AND 2900 FT. WEST OF THE NORTHEAST CORNER OF
SECTION 14.**

WATER QUANTITY STORAGE AT MAXIMUM CAPACITY

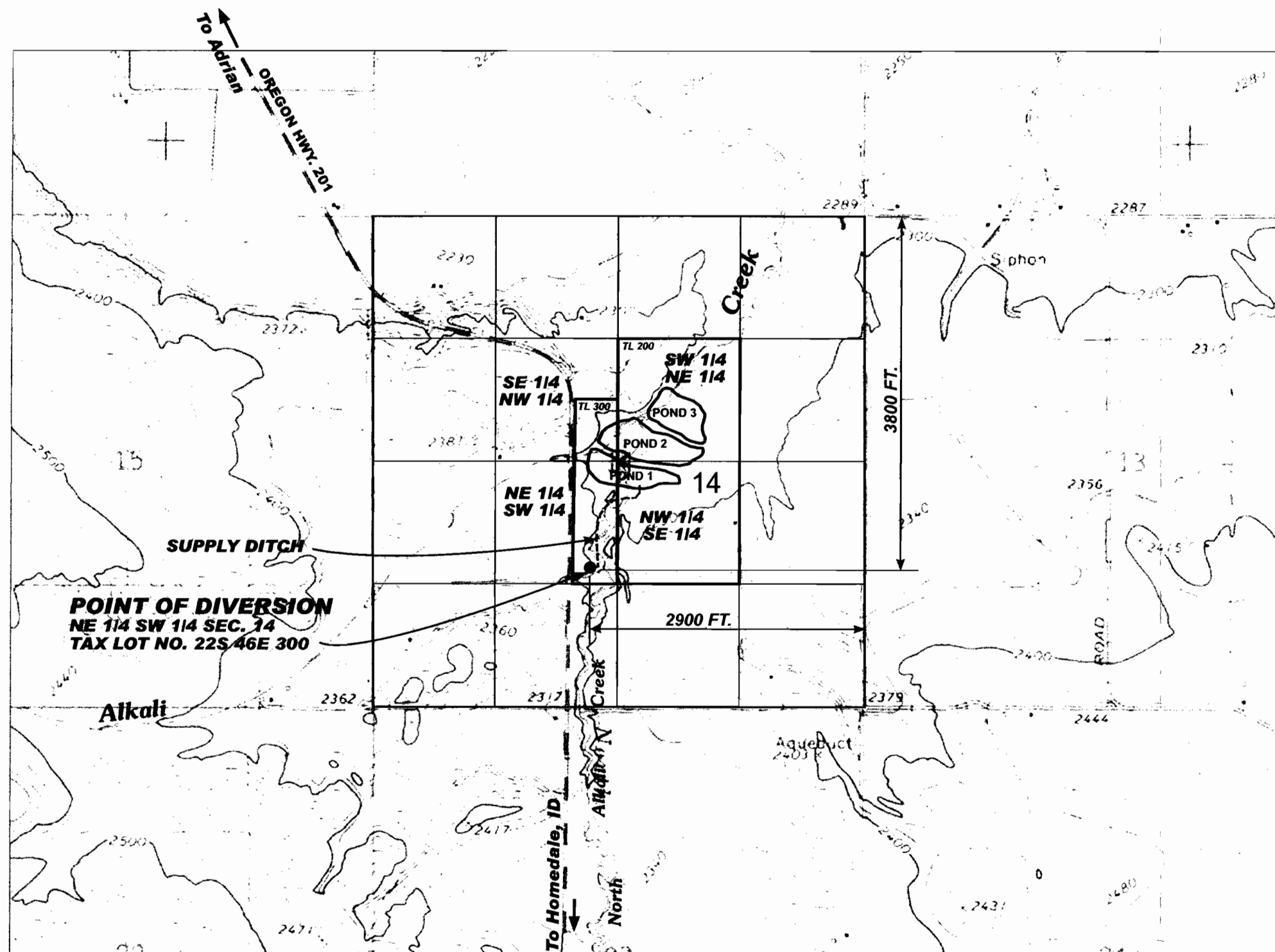
POND 1 = 9.2 ACRE-FEET
POND 2 = 13.5 ACRE-FEET
POND 3 = 7.4 ACRE-FEET

TOTAL ACRE FEET = 30.1

RECEIVED

JUN 26 2009

WATER RESOURCES DEPT
SALEM, OREGON



**DENNIS WERNER
ALKALI CREEK WETLANDS
PERMIT APPLICATION - ALTERNATE REVIEW
ALTERNATE RESERVOIR APPLICATION
MAP**

**FIGURE
1**