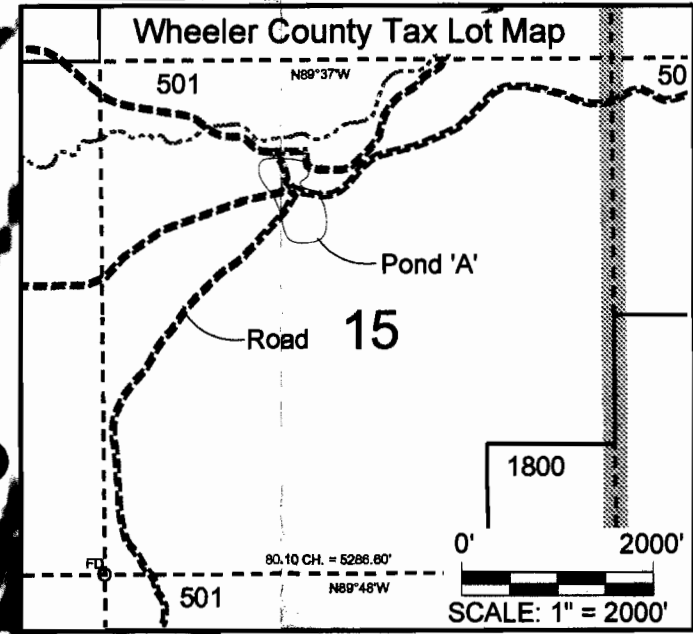


R-87489



STORAGE APPLICATION MAP

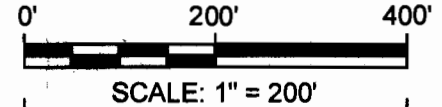
T11S, R24E, TAX LOT 501
 Located in NE¼ - NW¼ and SE¼ - NW¼
 of Section 15
 T11S, R24E W.M. Wheeler County, Oregon

NOTES

1. This map was prepared for the purpose of identifying the location of water rights only and is not intended to provide legal dimensions or locations of property ownership lines.

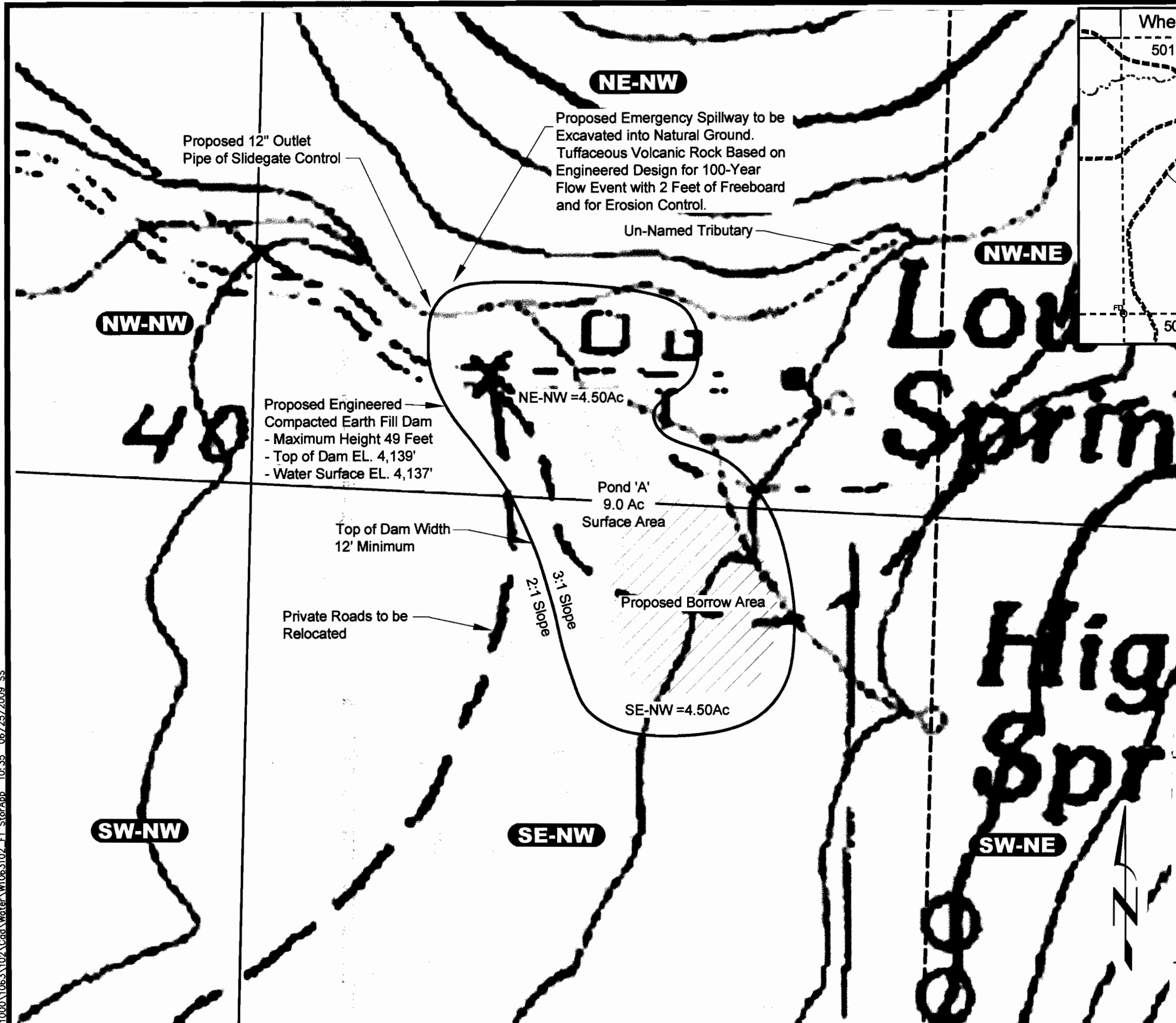


Quadrangle Location
 U.S. Geological Survey
 Quadrangle Tubb Springs



9	10	10	11
16	15	15	14
NW-NW	NE-NW	NW-NE	NE-NE
SW-NW	SE-NW	SW-NE	SE-NE
NW-SW	NE-SW	NW-SE	NE-SE
SW-SW	SE-SW	SW-SE	SE-SE
16	15	15	14
21	22	22	23

Quarter-Quarter Section Identifiers



RECEIVED

JUN 30 2009

WATER RESOURCES DEPT
SALEM, OREGON

Pond 'A' - Storage Application Map

4-DSD, LLC

Waterman Flat, Wheeler County, Oregon



NEWTON CONSULTANTS INC.
 Earth, Water and Rock Specialists
 Ph: 541 504-9960
 Fax: 541 504-9961

FIGURE 1

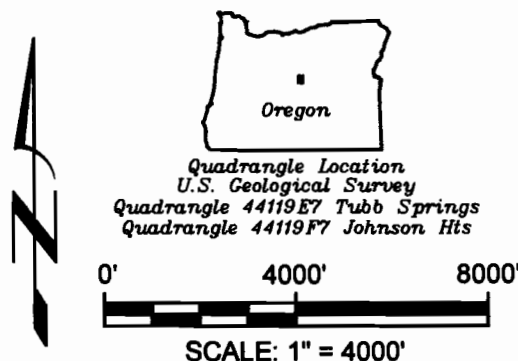
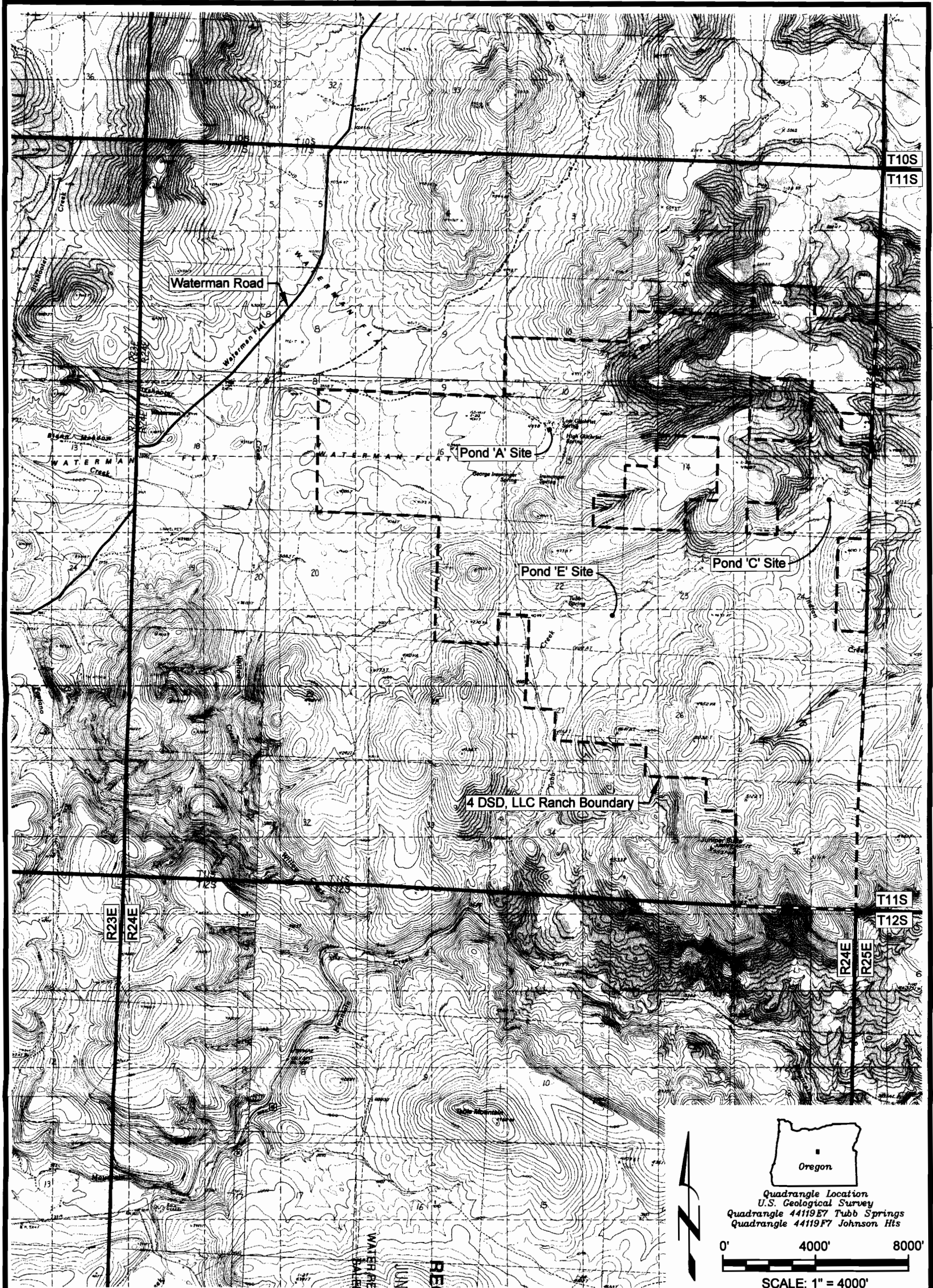
PROJECT NO. 1063-102

DATE: JUNE 2009

DRAWN BY: S. Schenck

DESIGNED BY: D. Newton

G:\1000\1063\102\Cond\Water\W1063102_F1_StorageApp_10:35_06/25/2009_SS



NEWTON
CONSULTANTS INC.
 Earth, Water and Rock Specialists
 Ph. 541 504-9960 Fax: 541 504-9961



WATER RESOURCES DEPT
 BUREAU OF WATER
 OREGON

RECEIVED
 JUN 30 2009

Proposed Locations of Ponds 'A', 'C', & 'E'
4 DSD, LLC Ranch
Waterman Flat, Wheeler County, Oregon

DESIGNED BY: K.Tumer	DRAWN BY: S.Schenck	DATE: JUNE 2009	PROJECT NO. 1063-102	FIGURE 1
--------------------------------	-------------------------------	---------------------------	--------------------------------	--------------------

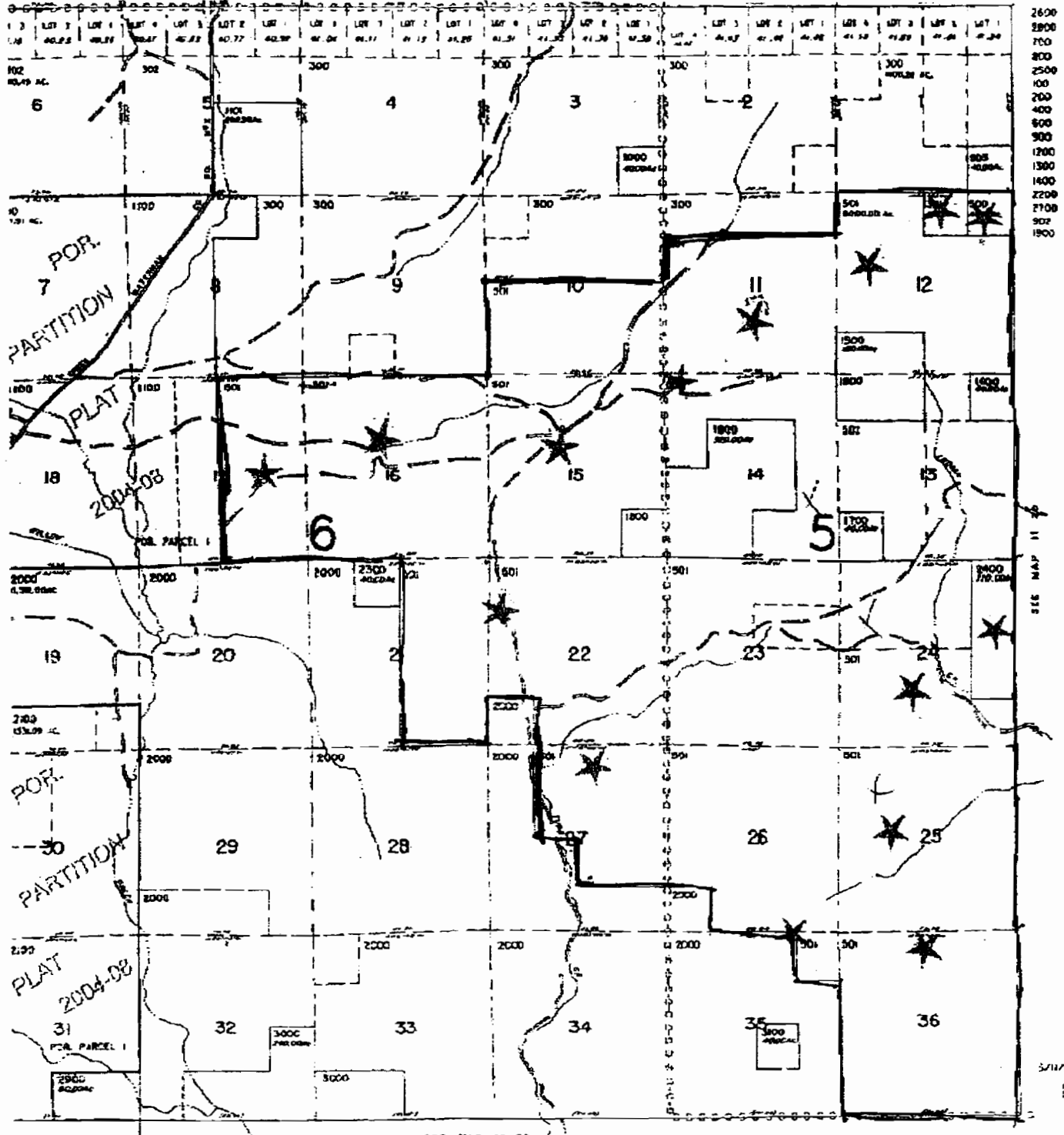
7-37489

R-87489

1 541 447 3371 P.07

AMERITITLE PRINEVILLE

2006 08:34



RECEIVED

JUN 30 2009

WATER RESOURCES DEPT
SALEM, OREGON

JUN 24 2009 4:41PM HP LASERJET FAX

N
 ↑
 COMPLIMENTS OF
AmeriTitle
 THIS SKETCH IS FURNISHED
 TO ASSIST IN PROPERTY
 LOCATION AND THE COMPANY
 DOES NOT GUARANTEE
 ITS ACCURACY.

Revised
 5/11/2004, J.O.
 11 24