

**NEWTON**  
**CONSULTANTS INC.**  
 Earth, Water and Rock Specialists  
 Ph: 541 504-9960 Fax: 541 504-9961



WATER RESOURCES DEPT  
 SALEM, OREGON

JUN 30 2009

RECEIVED

Proposed Locations of Ponds 'A', 'C', & 'E'  
 4 DSD, LLC Ranch  
 Waterman Flat, Wheeler County, Oregon

DESIGNED BY: K.Turner

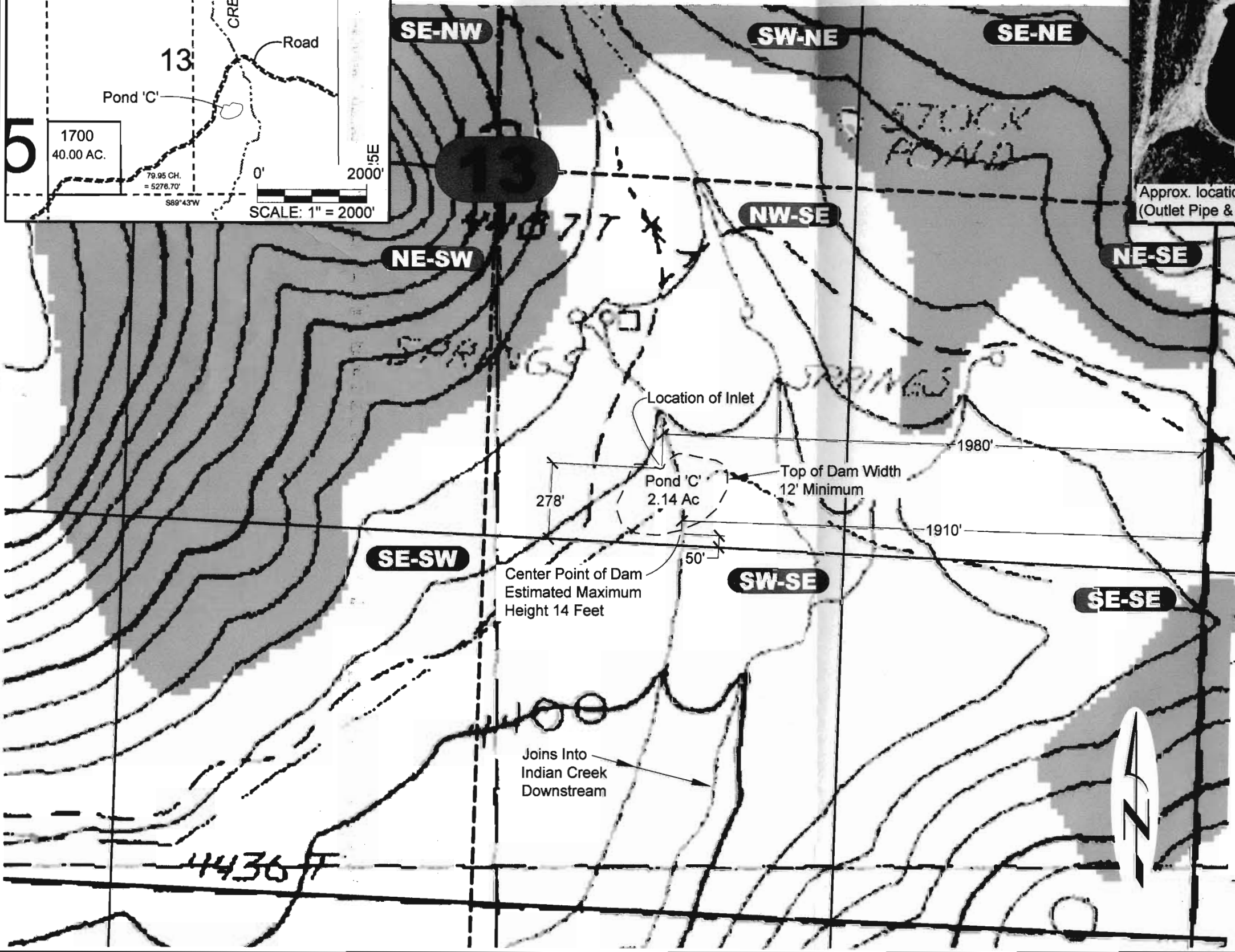
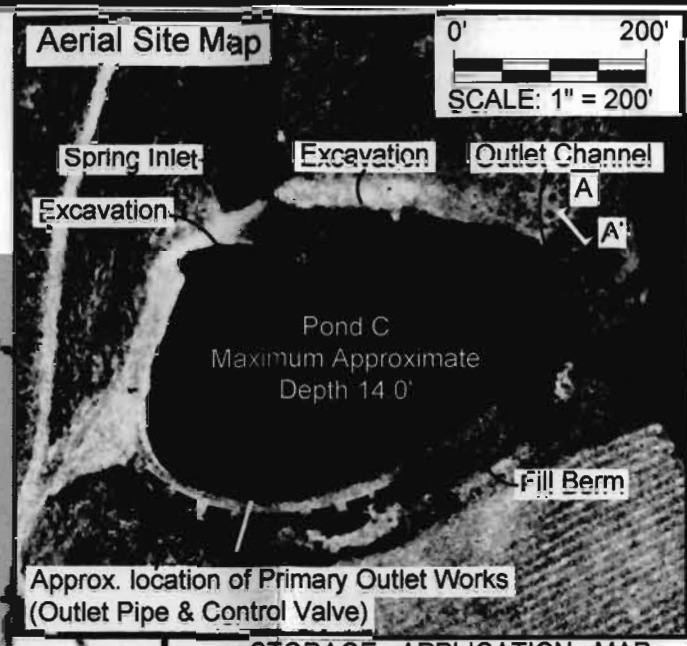
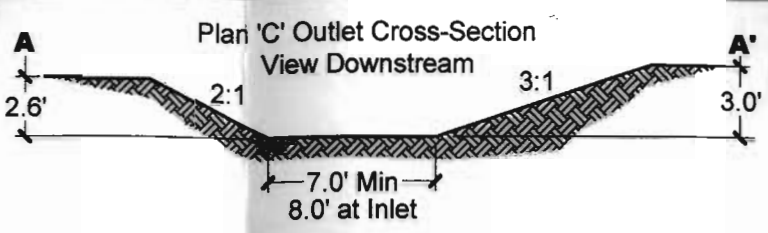
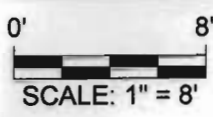
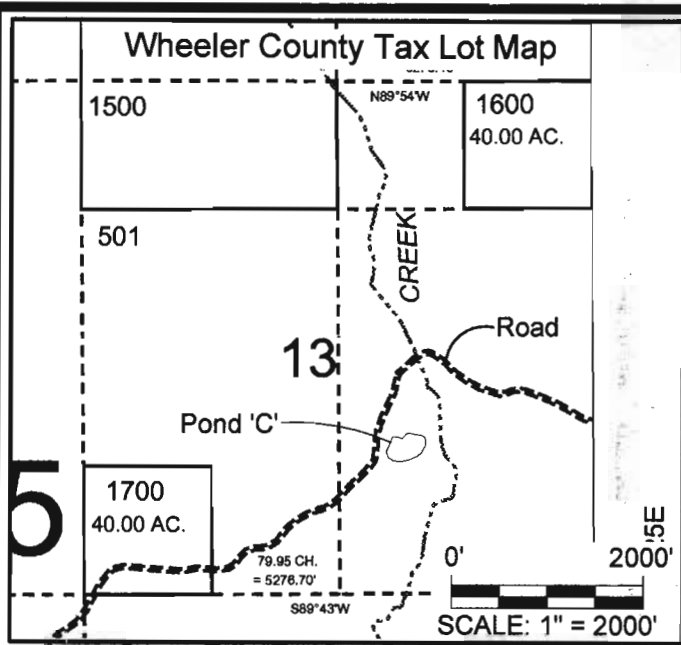
DRAWN BY: S.Schenck

DATE: JUNE 2009

PROJECT NO. 1063-102

FIGURE 1

Q-87490

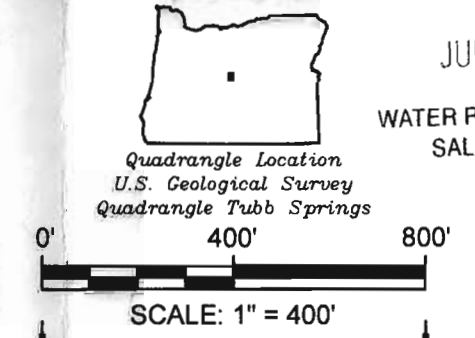


**STORAGE APPLICATION MAP**  
T11S, R24E, TAX LOT 501

Located in NW¼ - SE¼ of Section 13  
T11S, R24E W.M. Wheeler County, Oregon  
Center Point of Dam: 1,900' West, 50' North  
From East Quarter of Section 13

**NOTES**

1. This map was prepared for the purpose of identifying the location of water rights only and is not intended to provide legal dimensions or locations of property ownership lines.



11	12			12	7
14	13	NW-NW	NE-NW	NW-NE	NE-NE
		SW-NW	SE-NW	SW-NE	SE-NE
		NW-SW	NE-SW	NW-SE	NE-SE
		SW-SW	SE-SW	SW-SE	SE-SE
14	13			13	18
23	24			24	19

**Quarter-Quarter  
Section Identifiers**

**Pond 'C' - Storage Application Map**  
4-DSD, LLC  
Waterman Flat, Wheeler County, Oregon

**RECEIVED**  
JUN 30 2009  
WATER RESOURCES DEPT  
SALEM, OREGON



**NEWTON  
CONSULTANTS INC.**  
Earth, Water and Rock Specialists  
Ph: 541 504-9960  
Fax: 541 504-9961

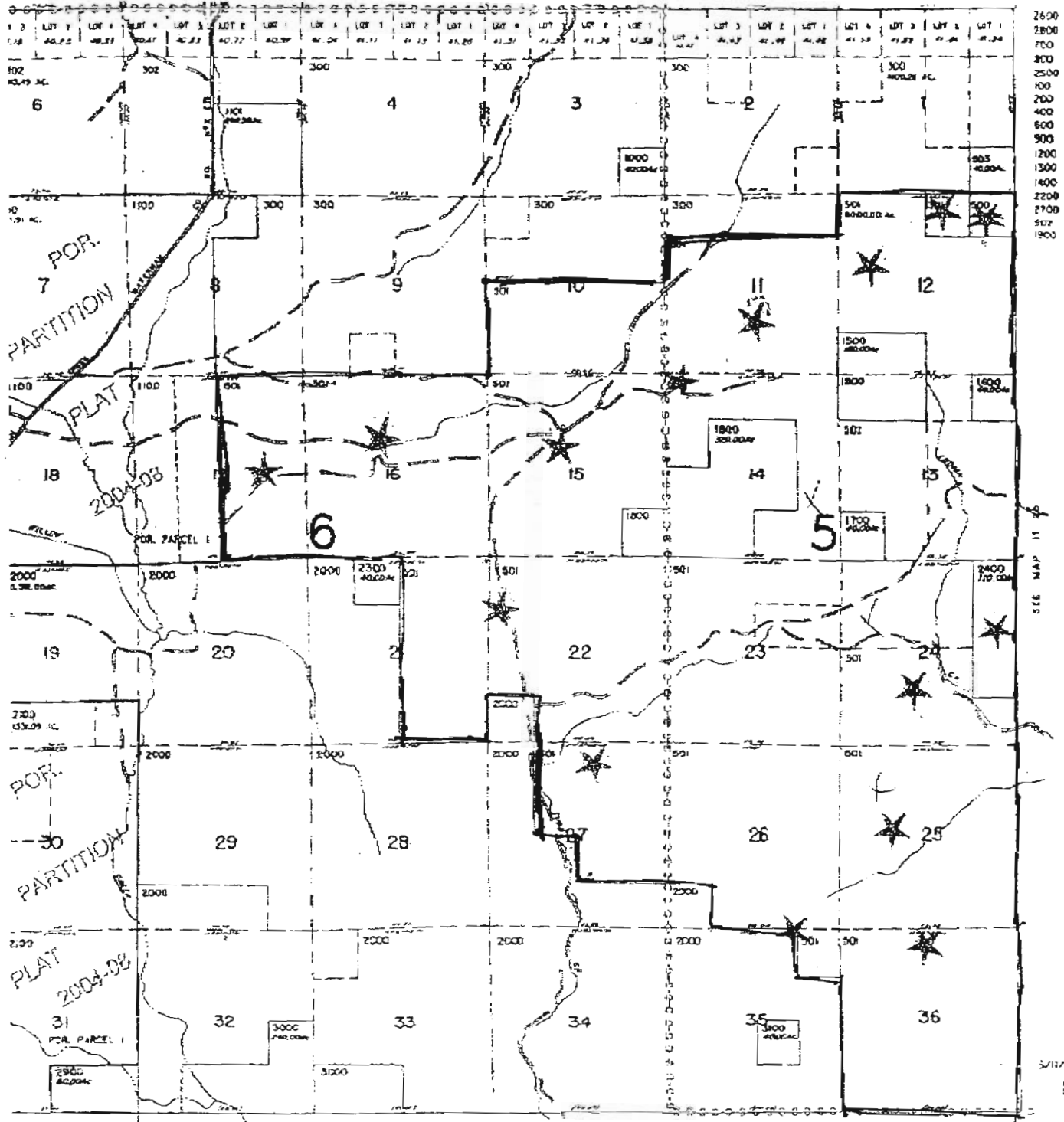
G:\1000\1063\102\Cad\Water\1063102\_F1\_Storage\06/25/2009\_SS

A-8848 R-8740

1 541 447 3371 P.07

AMERITITLE PRINEVILLE

2006 08:34



2600  
2800  
700  
800  
2500  
100  
200  
400  
500  
1200  
1300  
1400  
2200  
2700  
507  
1900

RECEIVED

JUN 30 2009

WATER RESOURCES DEPT  
SALEM, OREGON



COMPLIMENTS OF  
**AmeriTitle**  
THIS SKETCH IS FURNISHED  
TO ASSIST IN PROPERTY  
LOCATION AND THE COMPANY  
DOES NOT GUARANTY  
ITS ACCURACY.

Revised  
5/11/2004, JO  
11 24

JUN 24 2009 4:41PM HP LASERJET FAX