

MARION County - T8S, R5E, Section 28, SWSW 1/4

Opal Creek - Water Line

Bull of the Woods
Wilderness

29

Road 2209

Pelton
Shed

tax lot 08SE 00700
PLACE OF USE



RECEIVED

JUN 30 2009

WATER RESOURCES DEPT
SALEM, OREGON

29 28 (SWSW 1/4)
32 33

Water Line

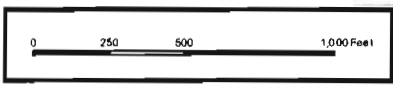
Opal Creek

Intake

Diversim
point

Legend

- Streams
- Water Line
- Roads
- Section Lines
- Designated Wilderness
- Other National Forest
- Trails



OREGON WILD

Willamette Basin

MARION COUNTY - T8S, R5E, Section 28, SWSW 1/4

Opal Creek - Water Line

Bull of the Woods
Wilderness

29

Road 2209

Pelton
Shed

Lot 085E 00700
PLACE OF USE



RECEIVED

JUN 30 2009

WATER RESOURCES DEPT
SALEM, OREGON

Area of
CABINS
29 28(SWSW 1/4)
32 35

Water Line

Opal Creek

Intake

DIVERSION
POINT

Legend

- Streams
- Water Line
- Roads
- - - Section Lines
- Designated Wilderness
- Other National Forest
- Trails



OREGON WILD

Willamette Basin

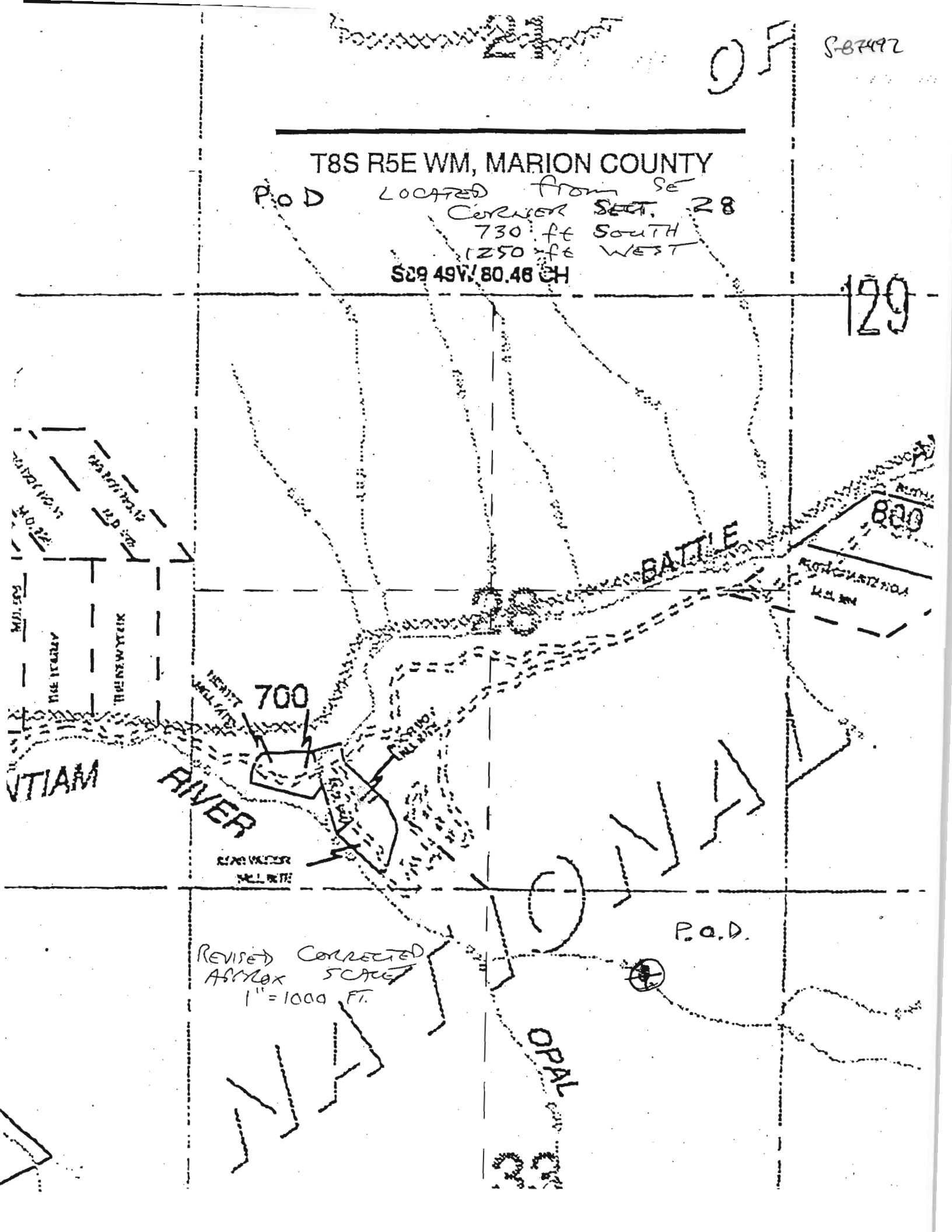
S-87492

OF

T8S R5E WM, MARION COUNTY

P.O.D. LOCATED FROM SE CORNER SECT. 28
730 ft SOUTH
1250 ft WEST
S29 49W 80.48 CH

129



24.171 10.15
24.171 10.15
22.0 52
22.0 52
ARPA 1 20
MILWAUKEE

TAMMAM RIVER

700

BATTLE

800

SEAS WATER
WELL 10772

REVISED CORRECTED
ASYLOX SCALE
1" = 1000 FT.

P.O.D.

OPAL

S-07492

OF

T8S R5E WM, MARION COUNTY

P.O.D. LOCATED FROM SE
 CORNER SECT. 28
 730 ft SOUTH
 1250 ft WEST
 S89 49W / 80.48 CH

129

SECTION 28
 SECTION 29
 SECTION 30
 SECTION 31
 SECTION 32
 SECTION 33
 SECTION 34

ANTIAM

RIVER

BATTLE

800

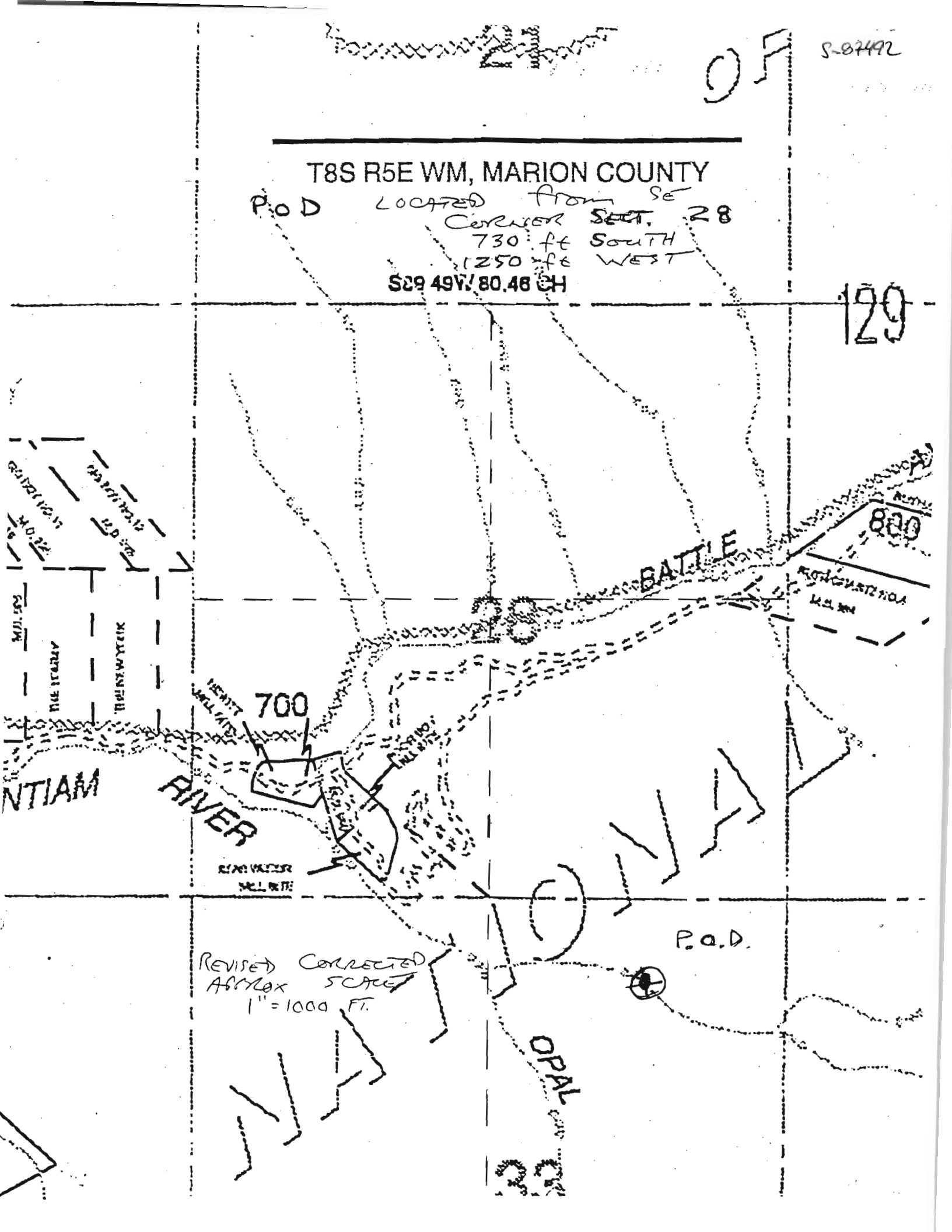
700

REAR VALVE
MILL RITE

REVISED CORRECTED
 ASYX SCALE
 1" = 1000 FT.

P.O.D.

OPAL



MARION County - T8S, R5E, Section 28, SWSW 1/4

P-87442

Opal Creek - Water Line

Bull of the Woods
Wilderness

29

Road 2209

Pelton
Shed

Parcel 08SE 00700
PLACE OF USE

29 28(SWSW 1/4)
32 35



RECEIVED

JUN 30 2009

WATER RESOURCES DEPT
SALEM, OREGON

Intake

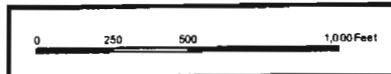
Diversim
point

Water Line

Opal Creek

Legend

- Streams
- Water Line
- Roads
- - - Section Lines
- Designated Wilderness
- Other National Forest
- - - Trails



Willamette Basin



OREGON WILD