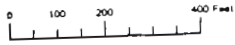


D FOR ONLY



NE 1/4 SECTION 03 T02N R10E WM HOOD RIVER COUNTY
1" = 200'

02N 10E 03A

CANCELLED NOS. 1603

2-87498

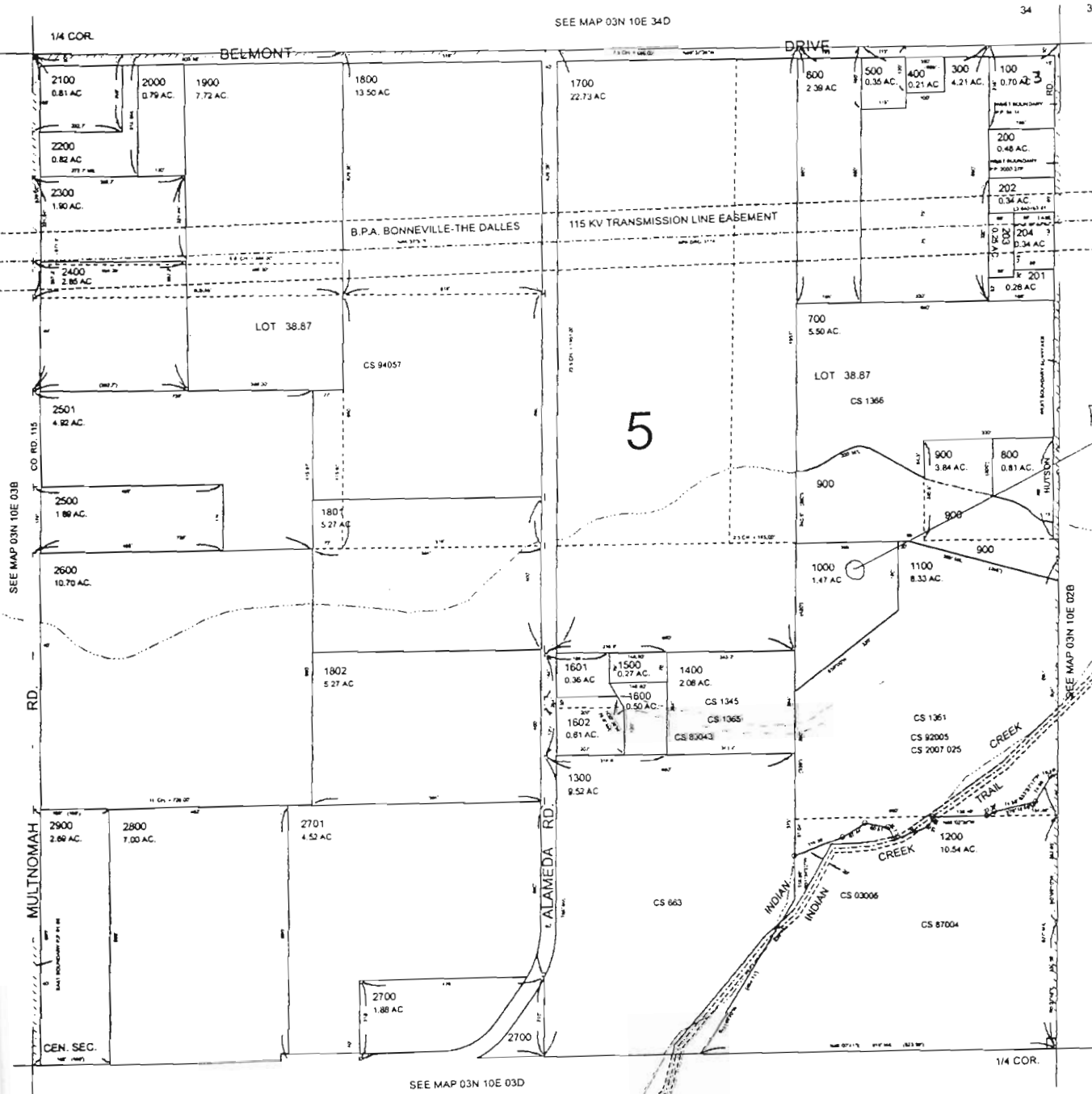
Scale 1" = 400'



RECEIVED

JUL 20 2009

WATER RESOURCES DEPT
SALEM, OREGON



Proposed Pond

Pond Located 1350 Feet South and 525 Feet West of NE Corner of section 3.

Access from Alameda Road