

App R-87496

R-87496

Map:

Goffena Reservoir #1

Goffena Reservoir #2

THIS MAP WAS PREPARED FOR ASSESSMENT PURPOSE ONLY

SECTION 28 T5S R4W W.M. YAMHILL COUNTY 1" = 400'

5 4 28

CORRECTED MAP SCALE APPROX 1" = 600'

SEE MAP 5 4 21

21 22 28 27

CANCELLED 401 402

Applicant:

Steve & Rosalba Goffena

Reservoir #2 Location:

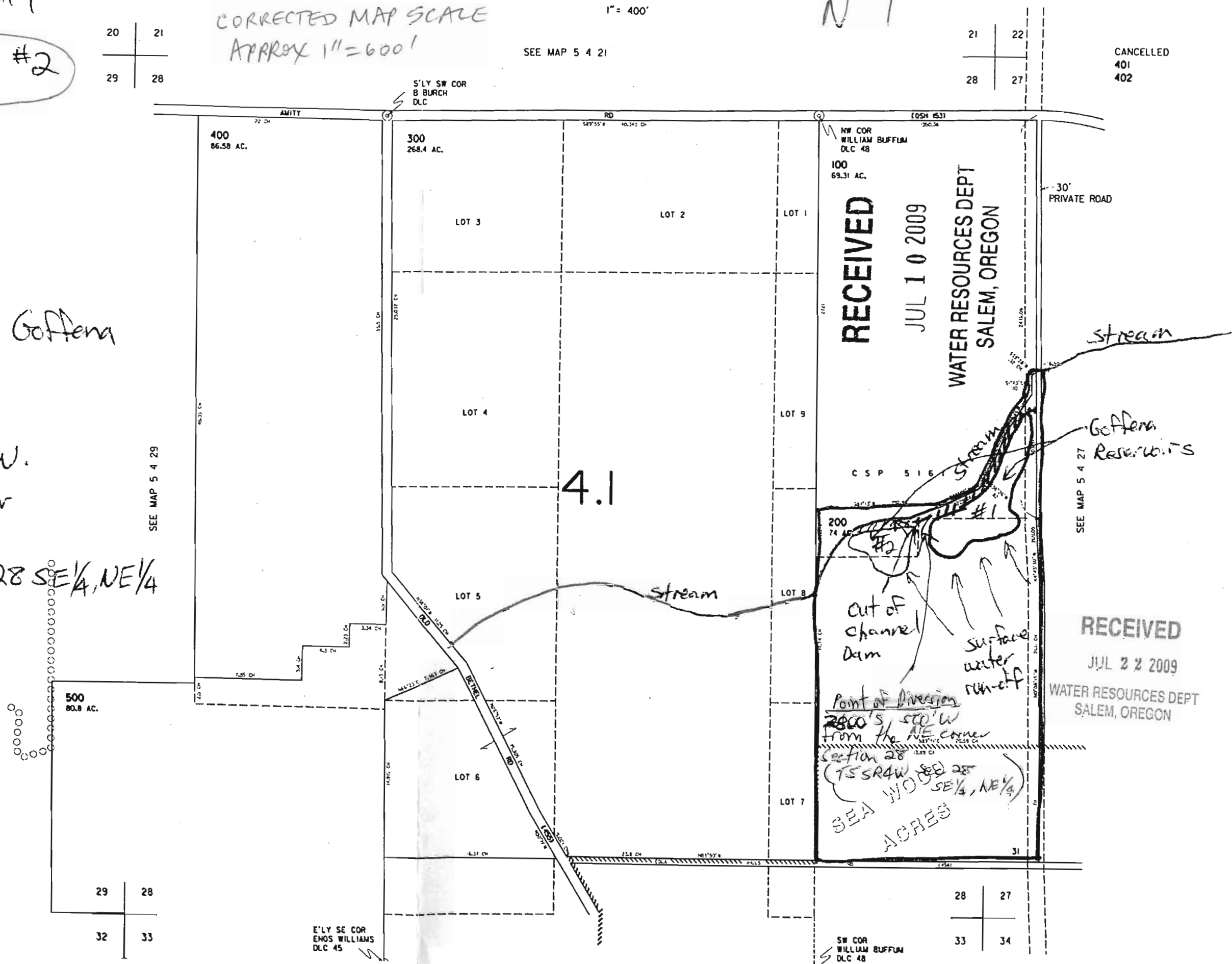
2200' S, and 650' W. From the NE Corner Section 28 T5S R. 4W. Sec 28 SE 1/4, NE 1/4

Tax Lot:

00200

Scale:

1" = 400' 600'



RECEIVED

JUL 10 2009

WATER RESOURCES DEPT SALEM, OREGON

RECEIVED

JUL 22 2009

WATER RESOURCES DEPT SALEM, OREGON

SW COR WILLIAM BUFFUM DLC 48

## Herb Mosgar

---

**From:** Steve Goffena [steveg@elementaltechnologies.com]  
**Sent:** Thursday, July 23, 2009 9:36 AM  
**To:** Herb Mosgar  
**Subject:** UPDATE: Steve Goffena - New Reservoir (2) by Amity

Hello Herb:

Thank you for speaking to me today. As we discussed, I agree with you that the distance measurement to the point of diversion needs to be changed from 2400' to 2800'. Thank you for pointing that out. Please go ahead and make that change as I definitely agree with it.

Best Regards,

Steve Goffena  
Strategic Account Executive  
Elemental Technologies  
503-222-3212 direct  
503-334-9941 cell

App R-87496

R-87496

SECTION 28 T5S R4W W.M.  
YAMHILL COUNTY  
1" = 400'

5 4 28

Map:

Goffena Reservoir #1

Goffena Reservoir #2

THIS MAP WAS PREPARED FOR  
ASSESSMENT PURPOSE ONLY

CORRECTED MAP SCALE  
APPROX 1" = 600'

SEE MAP 5 4 21

CANCELLED  
401  
402

Applicant:

Steve & Rosalba Goffena

Reservoir Location:

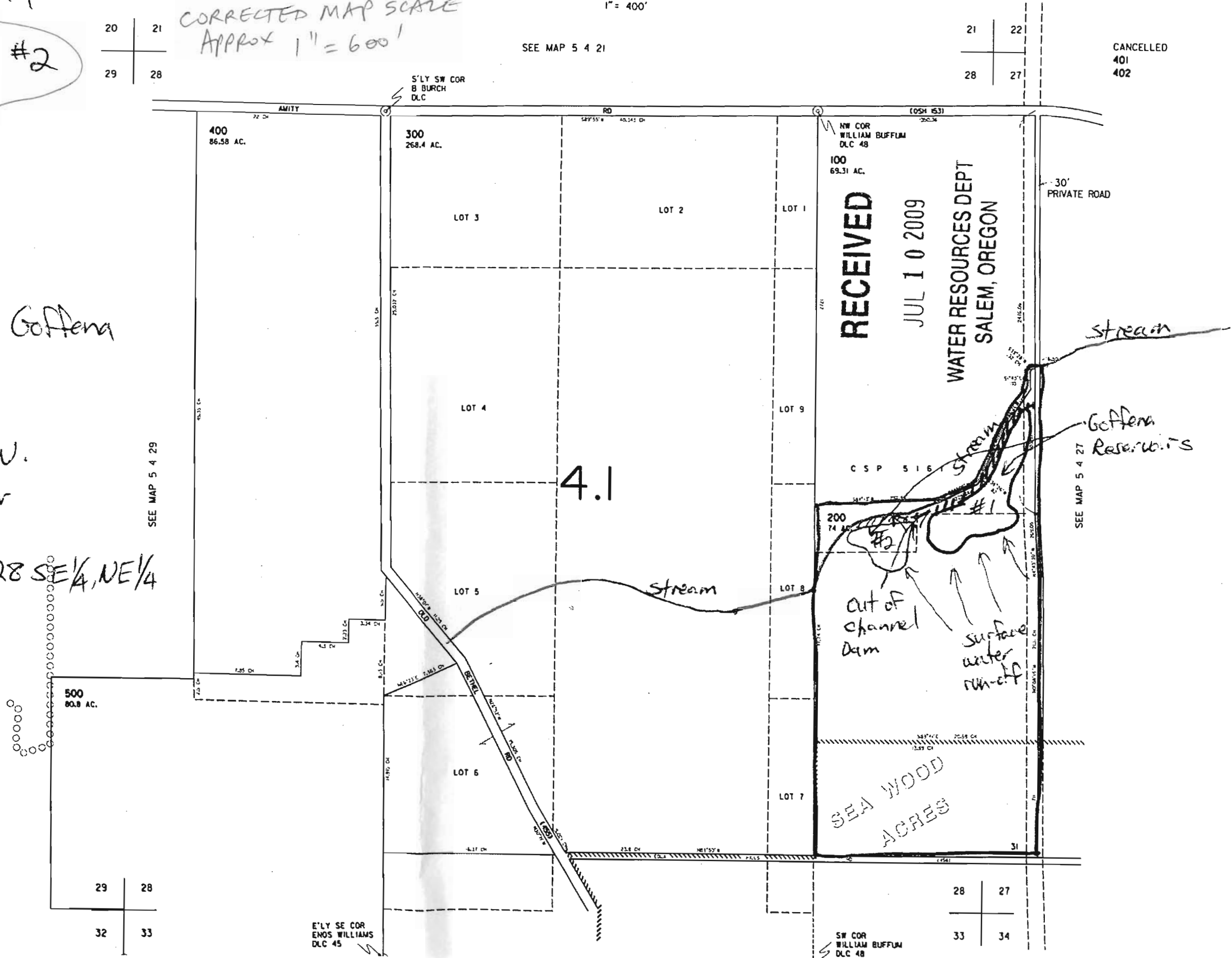
2200' S, and 50' W.  
From the NE Corner  
Section 28  
T 5 S. R. 4 W. Sec 28 SE 1/4, NE 1/4

Tax Lot:

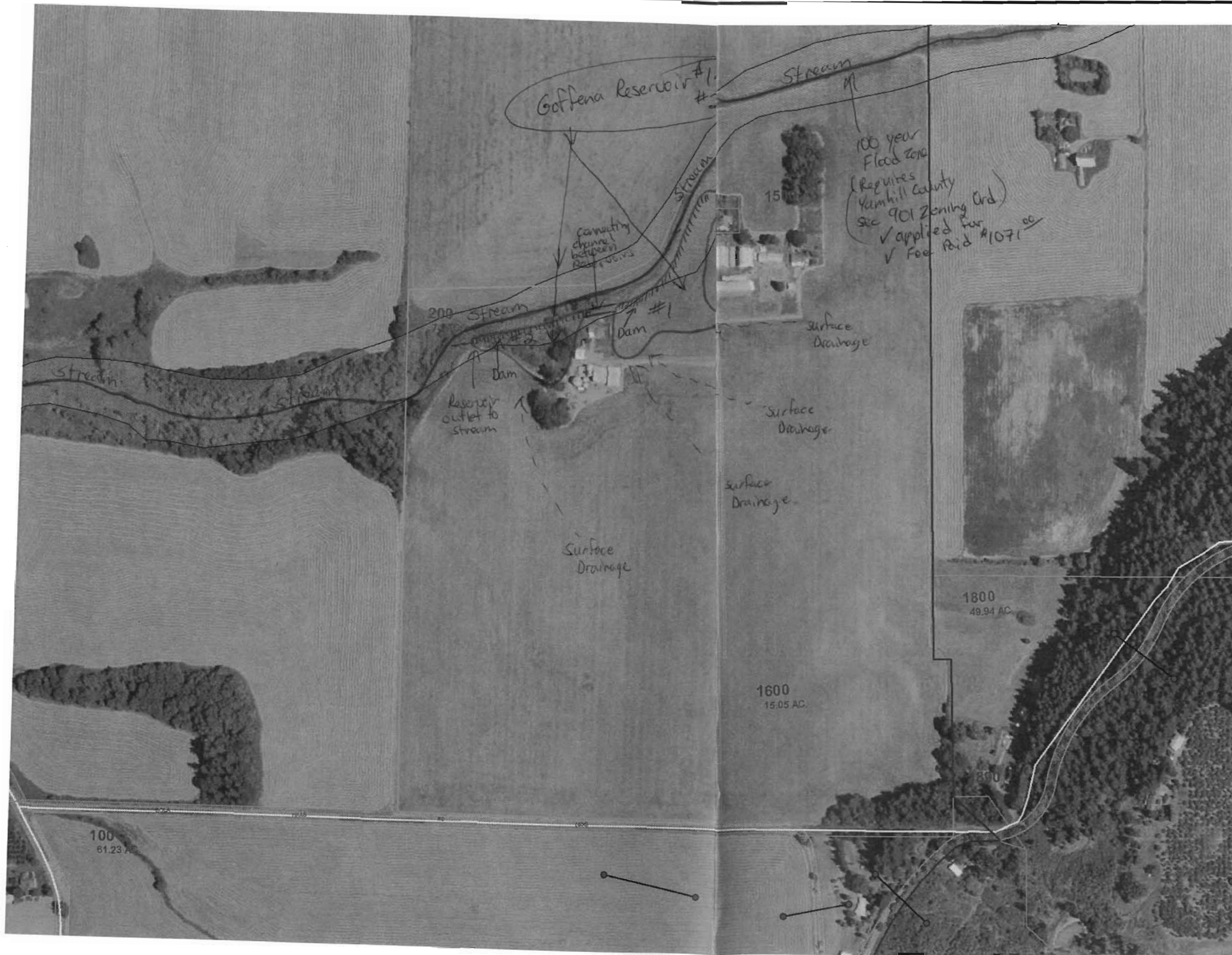
00200

Scale:

1" = 400'



# Yamhill County Map



- County Parks
- County Roads
  - County Roads
  - Private Roads
  - Public Roads
- Fema Panels
- Flood Plain
  - A
- Planning Taxlot Connection
  - Taxlot Connection Circle...
  - Taxlot Connection Lines
- Taxlots
  - right of ways
  - taxlot lines
  - taxlot polygons
- Townships
- Zoning

**RECEIVED**

JUL 10 2009

WATER RESOURCES DEPT  
SALEM, OREGON



N 7/8/2009

1in. = 400 ft.

This map was produced using the Yamhill County GIS data. The GIS data is maintained by the county to support its governmental activities. The county is not responsible for map errors, omissions, misuse or misinterpretation.

Map:  
 Goffena Reservoir #1  
 Goffena Reservoir #2

THIS MAP WAS PREPARED FOR  
 ASSESSMENT PURPOSE ONLY

SECTION 28 T5S R4W W.M.  
 YAMHILL COUNTY  
 1" = 400'

R-87476

5 4 28

20 | 21  
 29 | 28

SEE MAP 5 4 21

21 | 22  
 28 | 27

CANCELLED  
 401  
 402

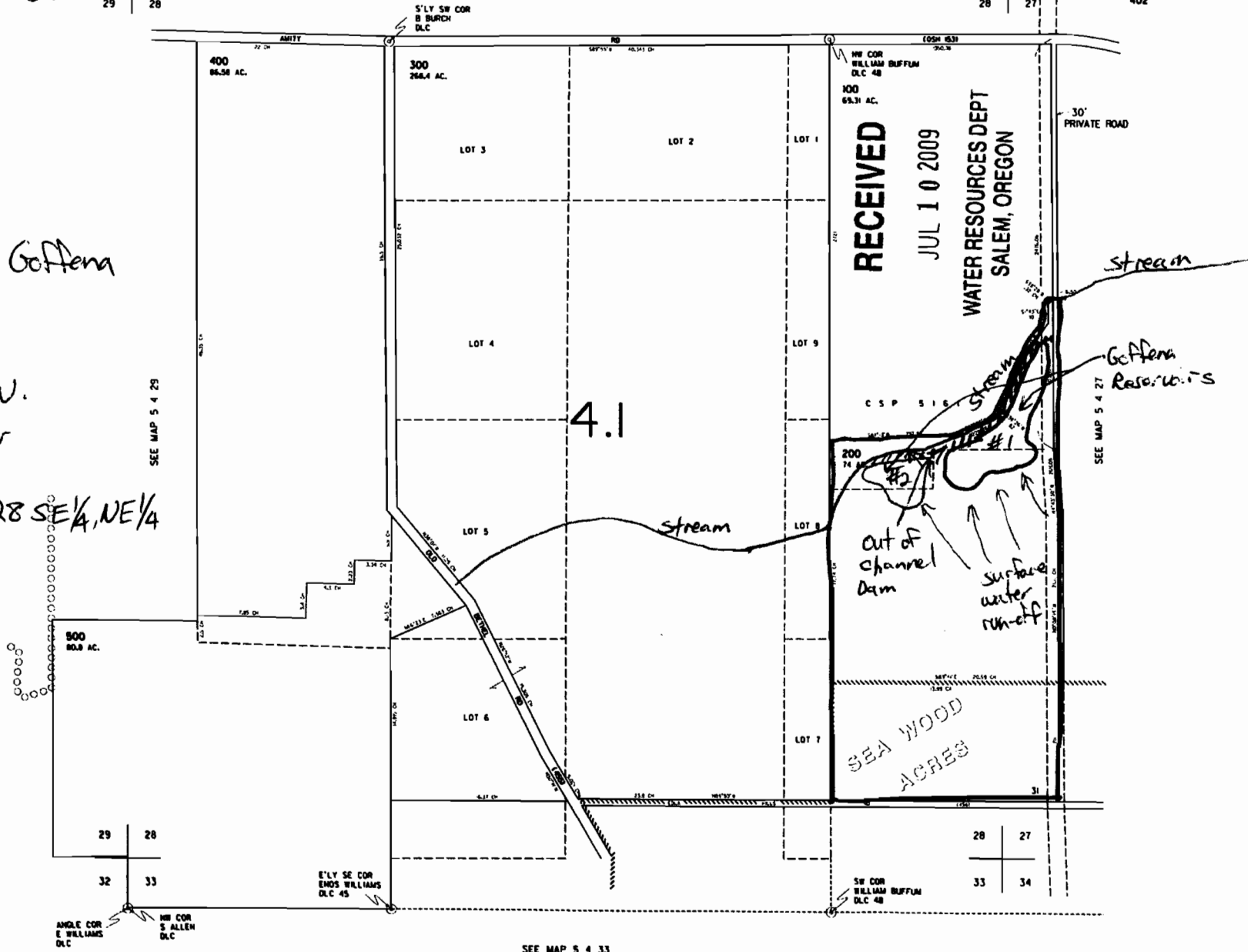
Applicant:  
 Steve & Rosalba Goffena

Reservoir Location:

2200' S, and 50' W.  
 From the NE Corner  
 Section 28  
 T 5 S. R. 4 W. Sec 28 SE 1/4, NE 1/4

Tax Lot:  
 00200

Scale:  
 1" = 400'



SEE MAP 5 4 33

REVISED 11-30-96 C1

5 4 28