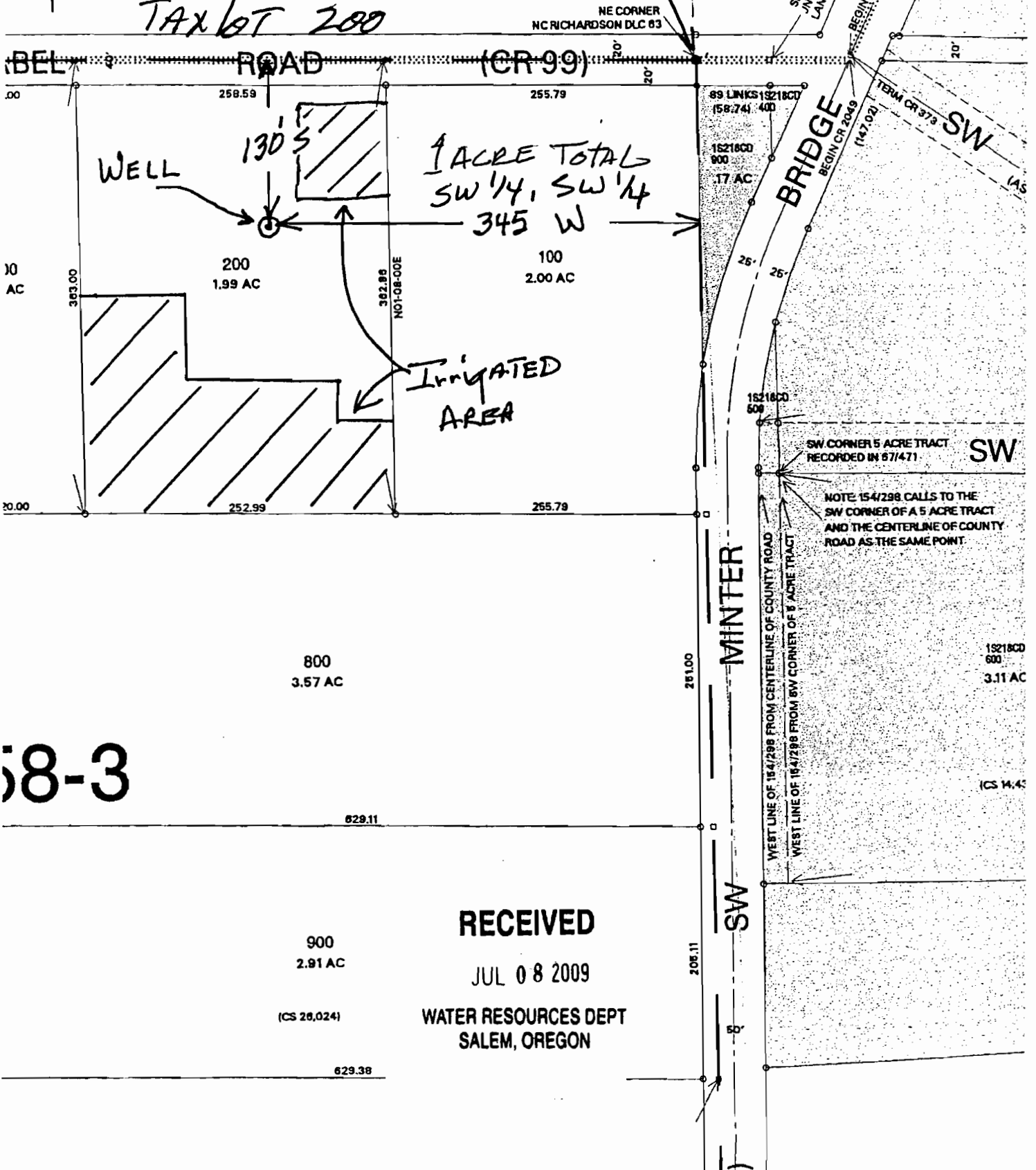


N WASHINGTON County
15218CC SW 1/4 SW 1/4
SCALE 1" = 100'
TAX LOT 200

58-5

NE CORNER
SW 1/4 SW 1/4



58-3

RECEIVED

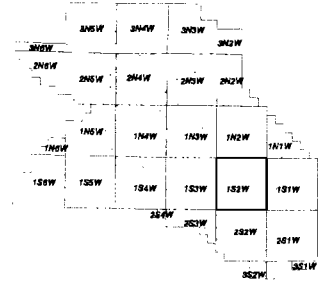
JUL 08 2009

WATER RESOURCES DEPT
SALEM, OREGON

9-17247

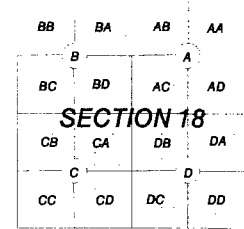
1S 2 18CC

1S 2 18CC



WASHINGTON COUNTY OREGON
SW 1/4 SW 1/4 SECTION 18 T1S R2W W.M.
SCALE 1" = 100'

36	31	32	33	34	35	36	31
1	6	5	4	3	2	1	6
12	7	8	9	10	11	12	7
13	18	17	16	15	14	13	18
24	19	20	21	22	23	24	19
25	30	29	28	27	26	25	30
36	31	32	33	34	35	36	31
1	6	5	4	3	2	1	6



CARTOGRAPHY

PLOT DATE
January 07, 1999
FOR ASSESSMENT PURPOSES
ONLY - DO NOT RELY ON
FOR OTHER USE

1S 2 18CC

1S 2 18CC