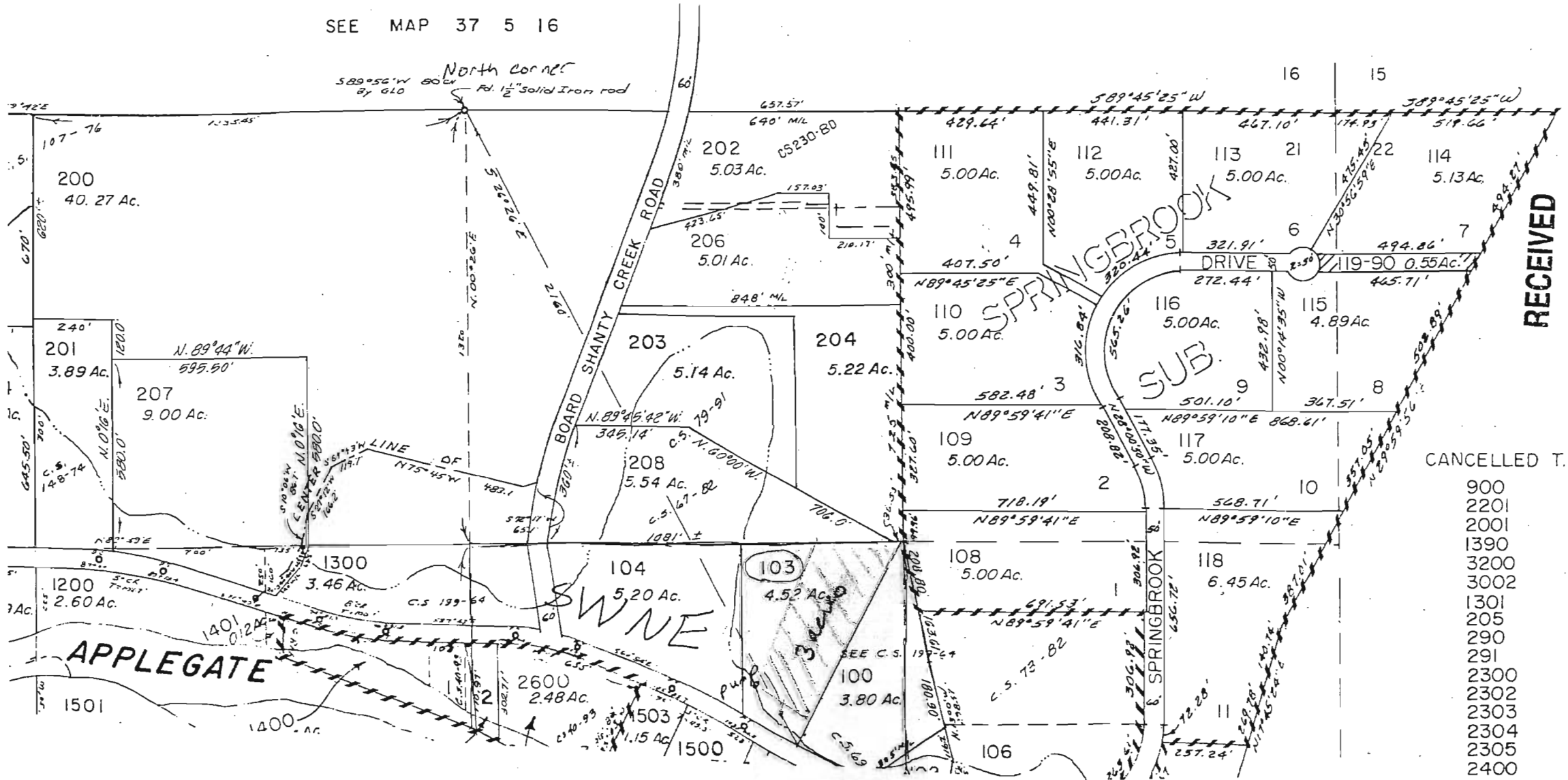


SECTION 21 T.37S. R.5W. W.M.
JOSEPHINE COUNTY

37 5 21

1" = 400'

SEE MAP 37 5 16



RECEIVED

AUG 03 2009

WATER RESOURCES DEPT

CANCELLED T.L.

- 900
- 2201
- 2001
- 1390
- 3200
- 3002
- 1301
- 205
- 290
- 291
- 2300
- 2302
- 2303
- 2304
- 2305
- 2400

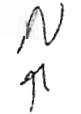
S-97506

SECTION 21 T.37S. R.5W. W. M.

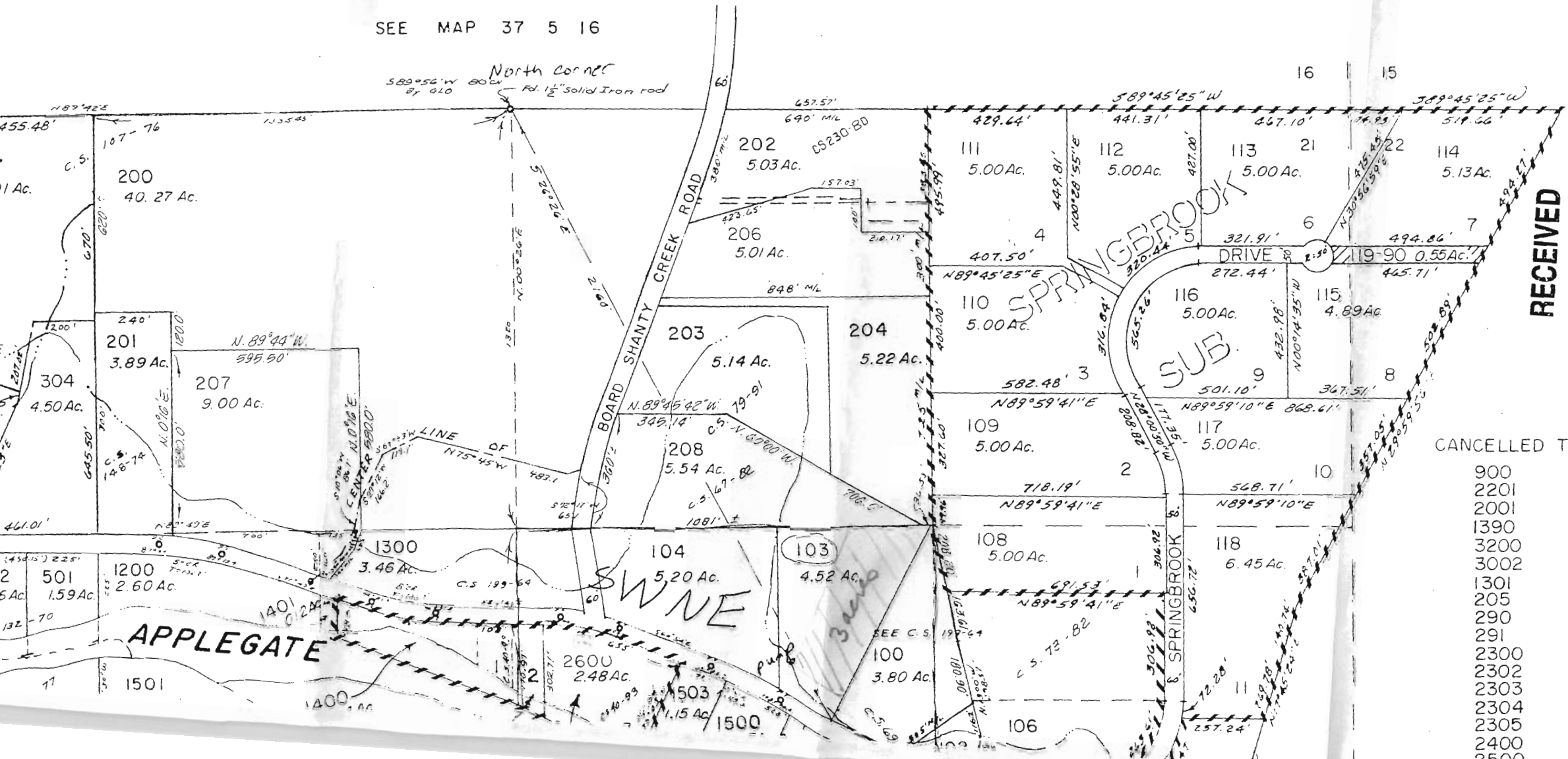
37 5 21

JOSEPHINE COUNTY

1" = 400'



SEE MAP 37 5 16



RECEIVED

AUG 03 2009

WATER RESOURCES DEPT
SALEM, OREGON

CANCELLED T.L.

- 900
- 2201
- 2001
- 1390
- 3200
- 3002
- 1301
- 205
- 290
- 291
- 2300
- 2302
- 2303
- 2304
- 2305
- 2400
- 2500

Point of
diversion
map

N
↑

The PoD is
1250' N and
150' E from
SW corner of
sec 6
T38S R4W
for the
North
Applegate
Ditch
(in SWSW
quarter
quarter)

