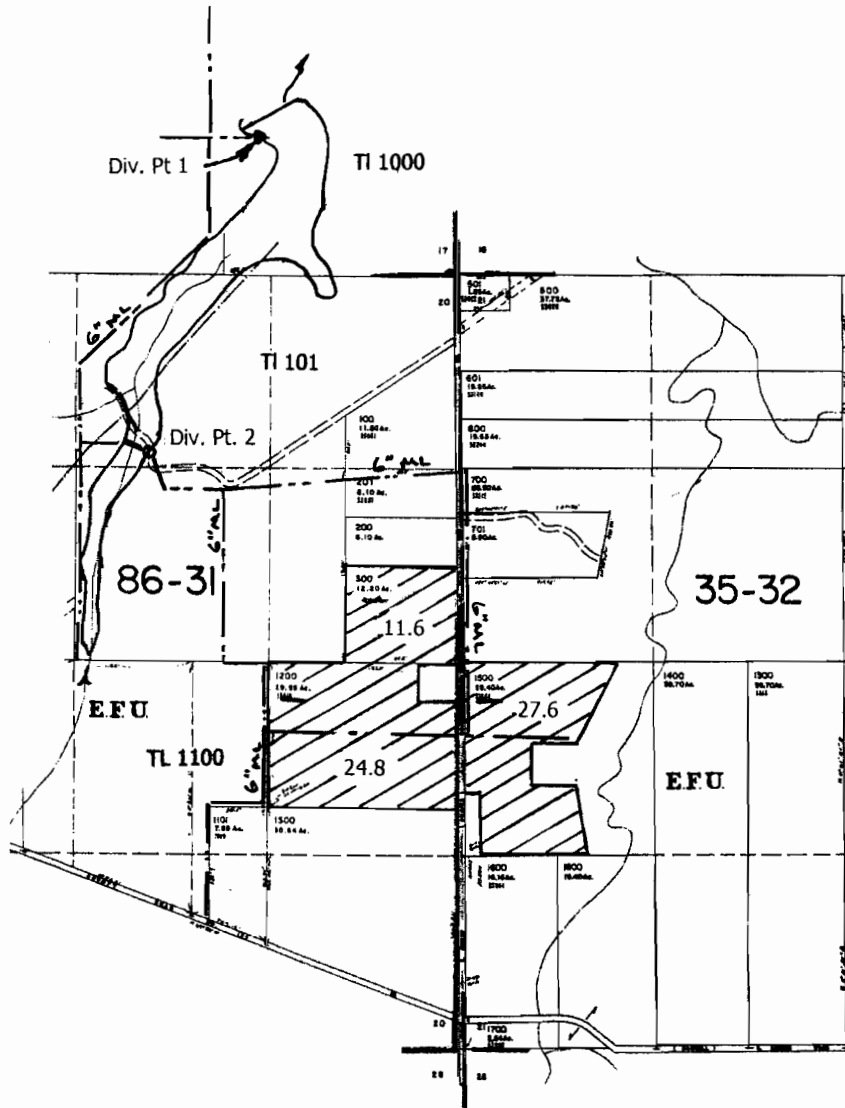


# APPLICATION MAP

## IN THE NAME OF ROSELAWN SEED, INC.

### T 5 S, R 1 E, W.M. Sec. 20 & 21



**RECEIVED**

**AUG 05 2009**

**WATER RESOURCES DEPT  
SALEM, OREGON**

Div. Pt. 2: 1220' S and 2150' W from the SE corner section 17

Scale 1" = 1320'

**Don Knauer Consulting  
P.O. Box 5416  
Salem, OR 97304**

This map is not intended to provide legal dimensions or locations of property ownership lines .

S-87507

SECTION 20 T. R.1E. W.M.

CLACKAMAS COUNTY

1" = 400'

7600

SEE MAP 5 1E 17

This map was prepared for assessment purpose only.

SECTION 21 T.5S. R.1E.W.M.

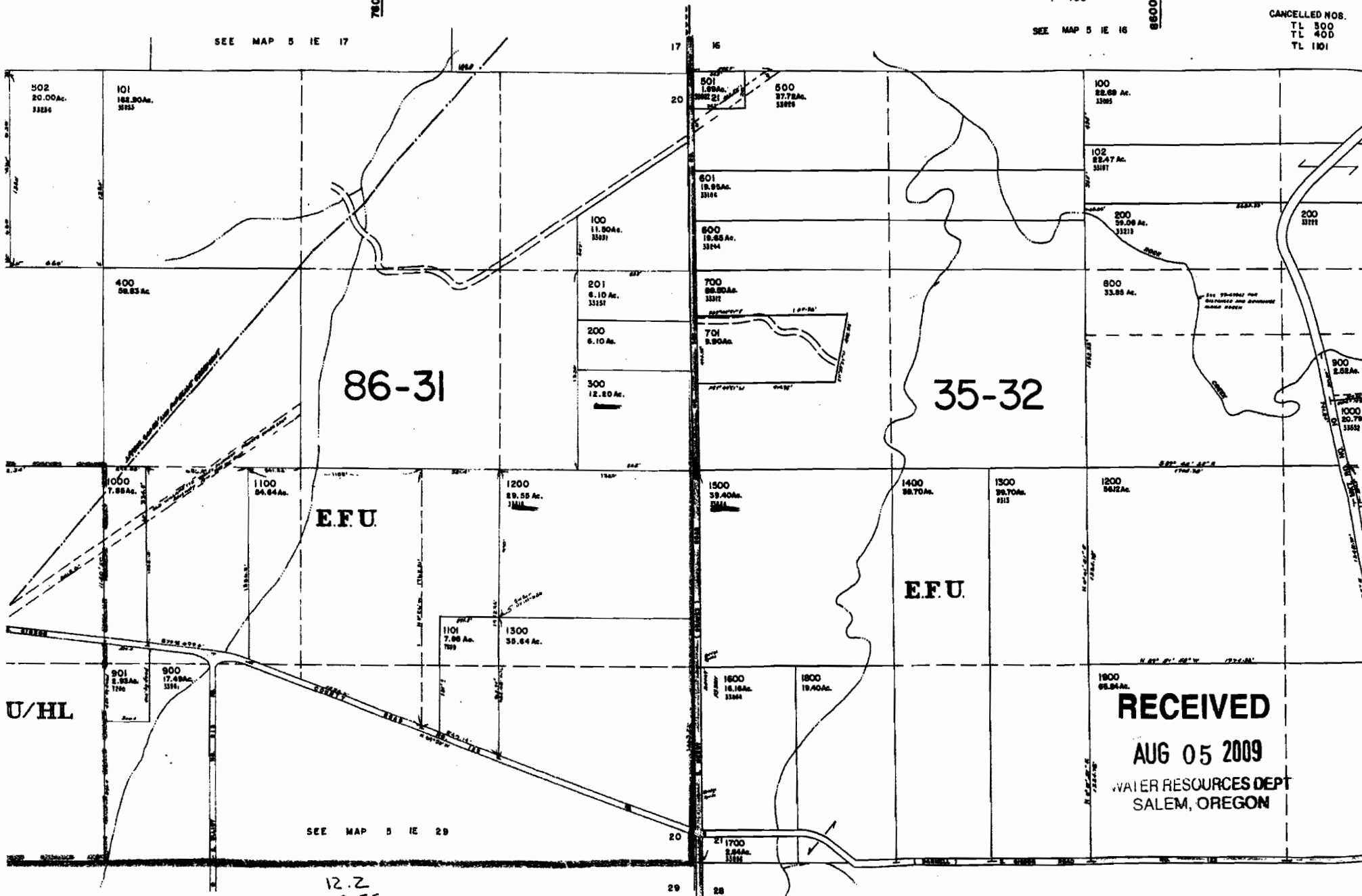
CLACKAMAS COUNTY

1" = 400'

8600

SEE MAP 5 1E 16

CANCELLED NOS.  
TL 300  
TL 400  
TL 1101



U/HL

EFU

EFU

RECEIVED

AUG 05 2009

WATER RESOURCES DEPT  
SALEM, OREGON

SEE MAP 5 1E 29

12.2  
29.55  
39.4  
2115 AC

SEE MAP 5 1E 28

**Roselawn Seed, Inc.**  
**Legal Description of Property Involved in Permit Application**

S ½ SE ¼ section 17, T 5 S R 1 E, W.M  
NE ¼ section 20, T 5 S R 1 E, W.M  
N ½ SE ¼ section 20, T 5 S R 1 E, W.M  
NW ¼ SW ¼ section 21, T 5 S R 1 E, W.M

**RECEIVED**  
**AUG 05 2009**  
WATER RESOURCES DEPT  
SALEM, OREGON