

SECTION PLAT

Section 16, 21, 22, 23

Township 23 S.

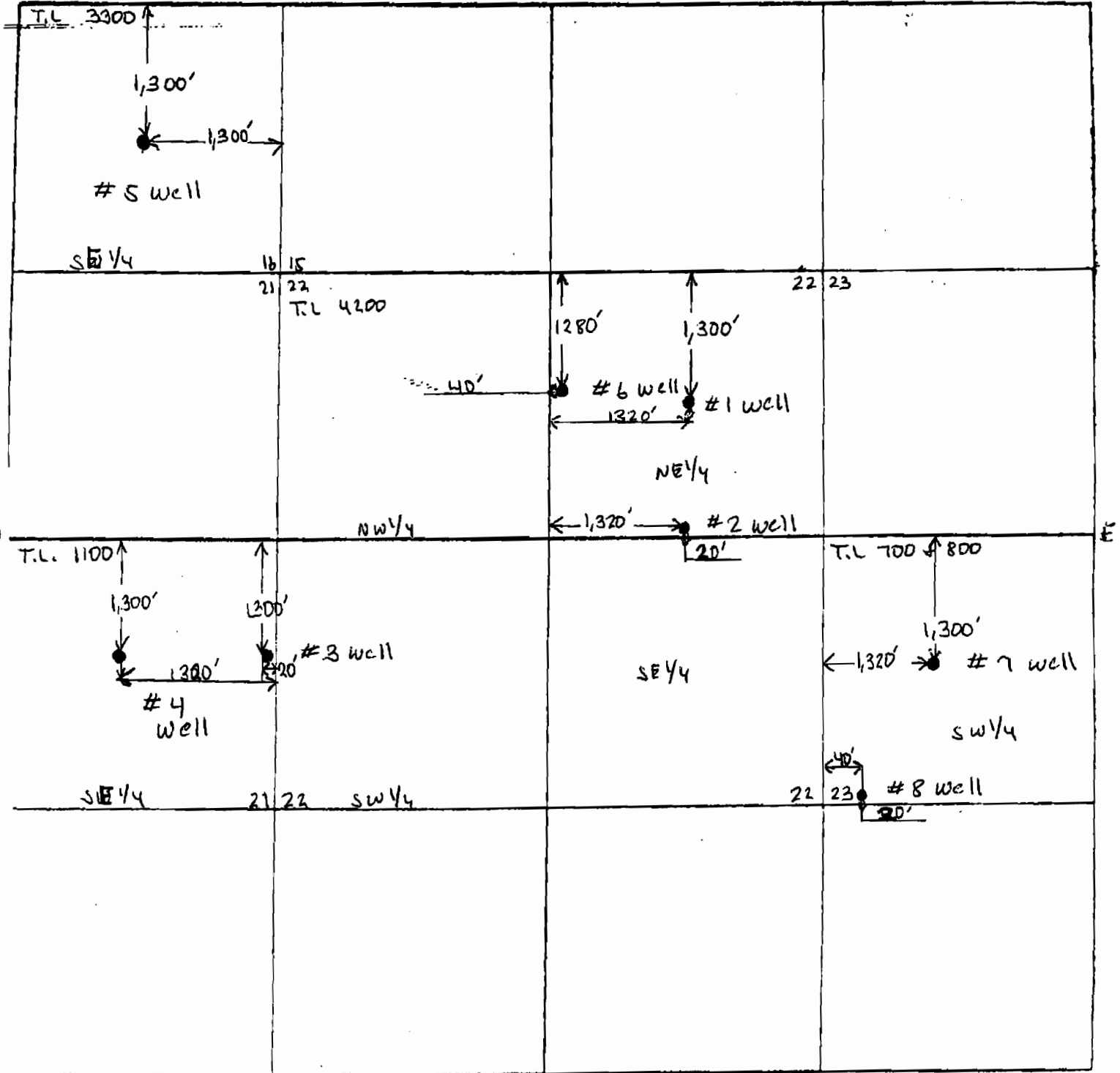
Range 33 E

County of HARNEY

State of ORE.

● - wells

NORTH



RECEIVED

AUG 06 2009

WATER RESOURCES DEPT
SALEM, OREGON

SECTION PLAI

947249

Section 16, 21, 22, 23

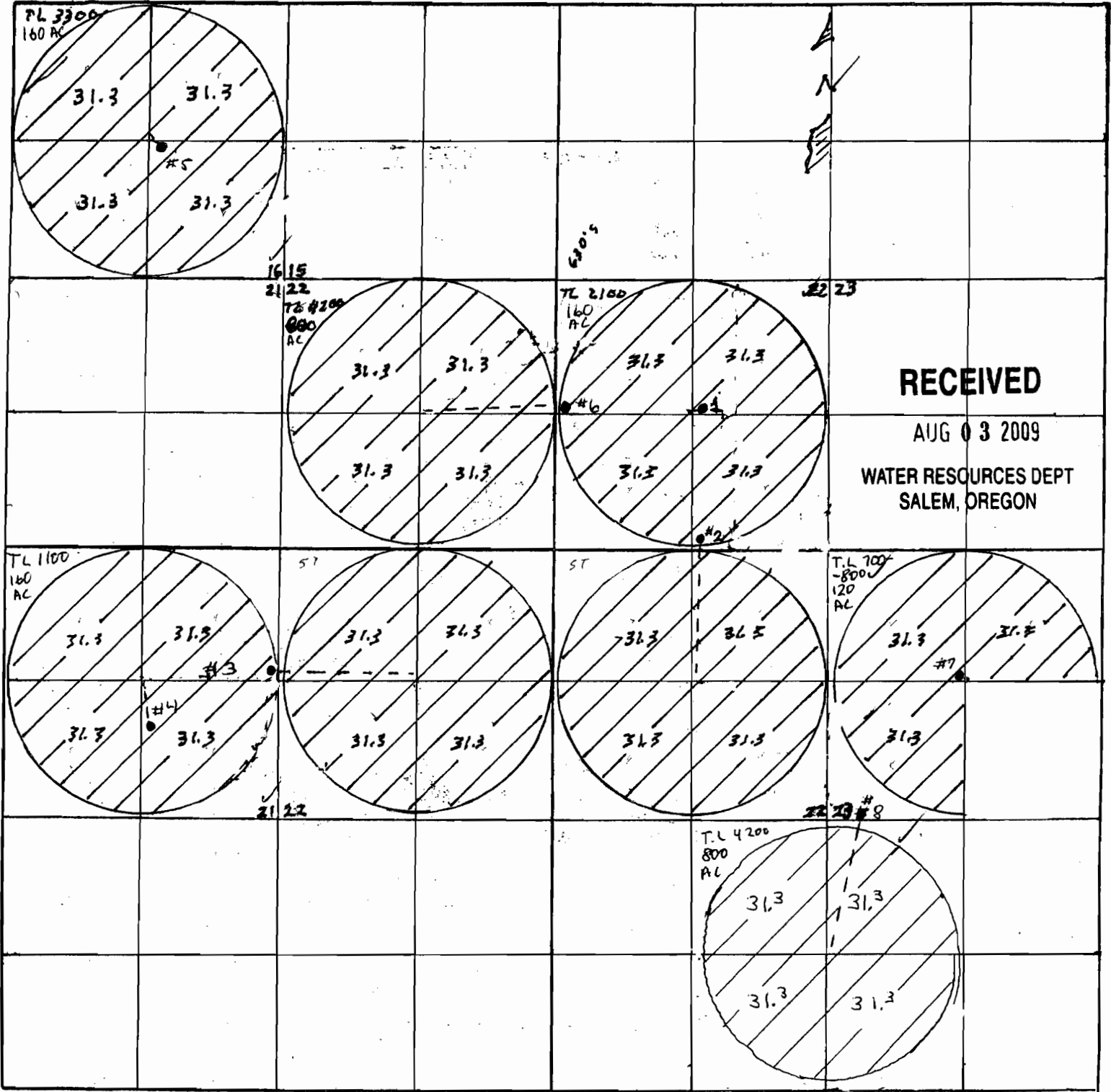
Township 23-5

Range 33-E

County of Harney

State of OR

NORTH



RECEIVED

AUG 03 2009

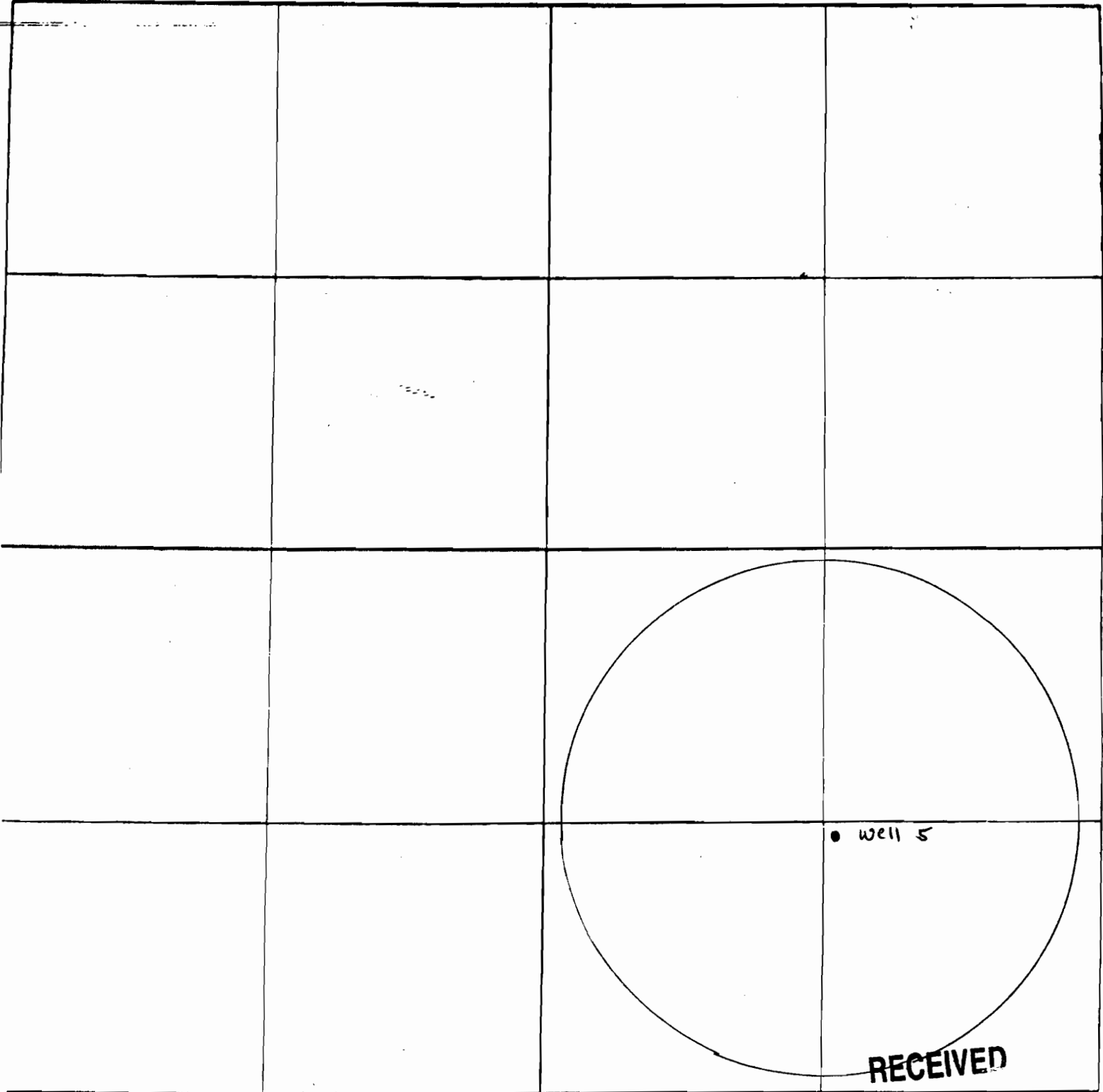
WATER RESOURCES DEPT
SALEM, OREGON

Remarks scale 4" = 1 mile - 600' - TL 4200 (640 Acres) Leased State Lands

SECTION PLAT

Section Sec. 16 Township 23 S Range 33 E.
County of HARNEY State of Oregon

NORTH



RECEIVED

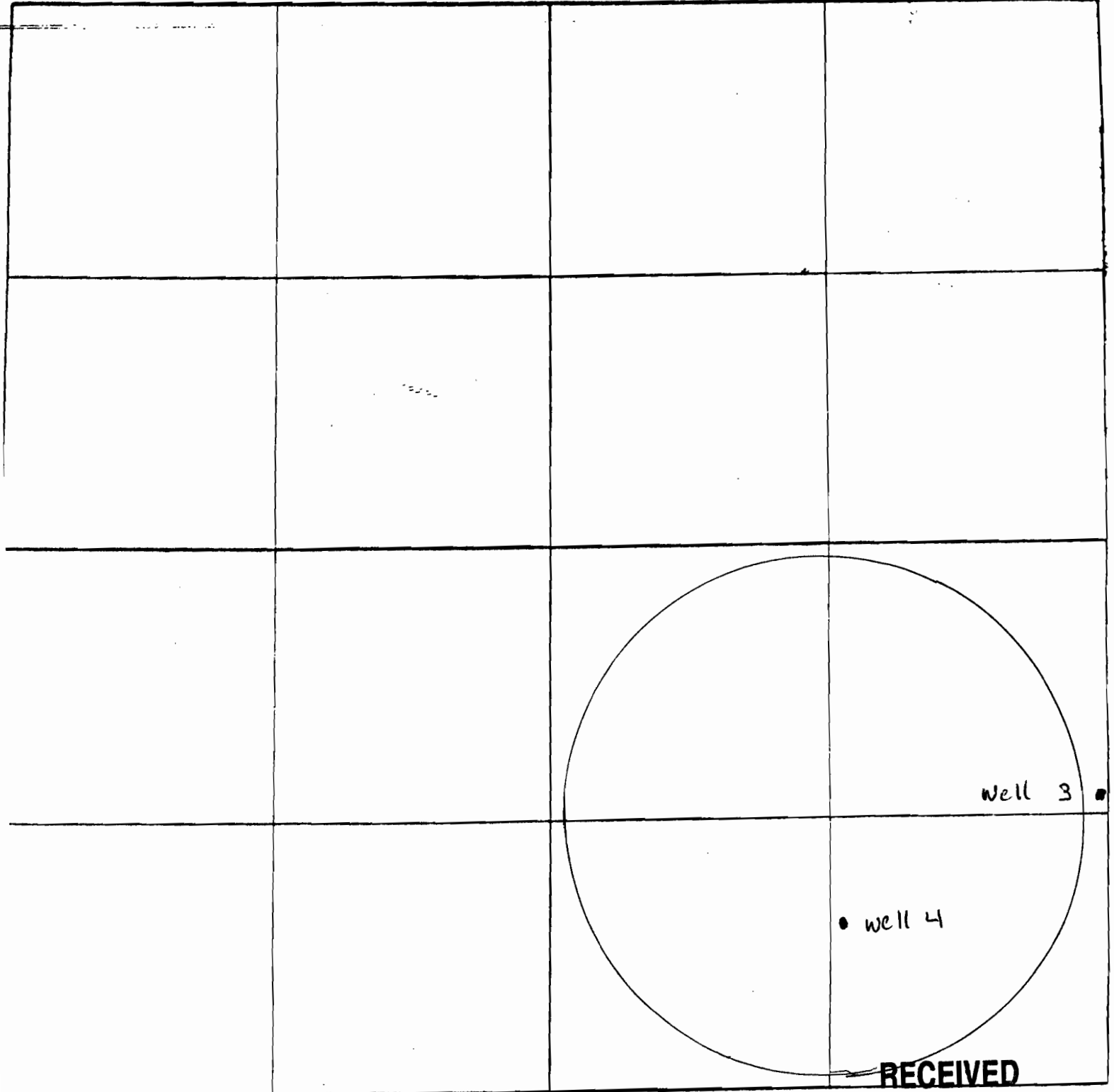
AUG 03 2009
WATER RESOURCES DEPT
SALEM, OREGON

SECTION PLAT

Section 21 Township 23 S Range 33 E

County of HARNEY State of Oregon

NORTH



RECEIVED

AUG 03 2009

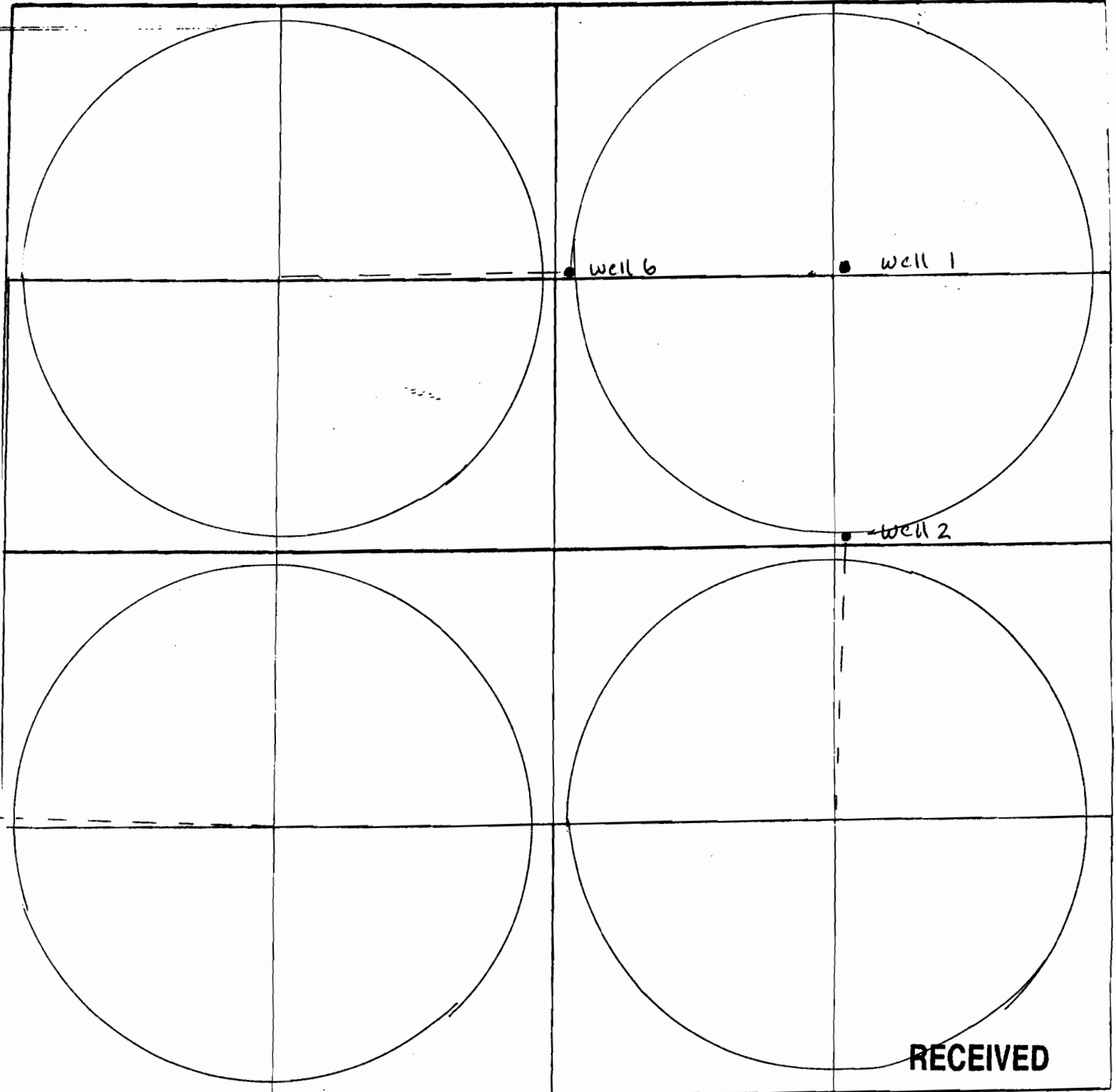
WATER RESOURCES DEPT
SALEM, OREGON

SECTION PLAT

Section 22 Township 23 S. Range 33 E.

County of HARNEY State of Oregon

NORTH



RECEIVED

AUG 03 2009

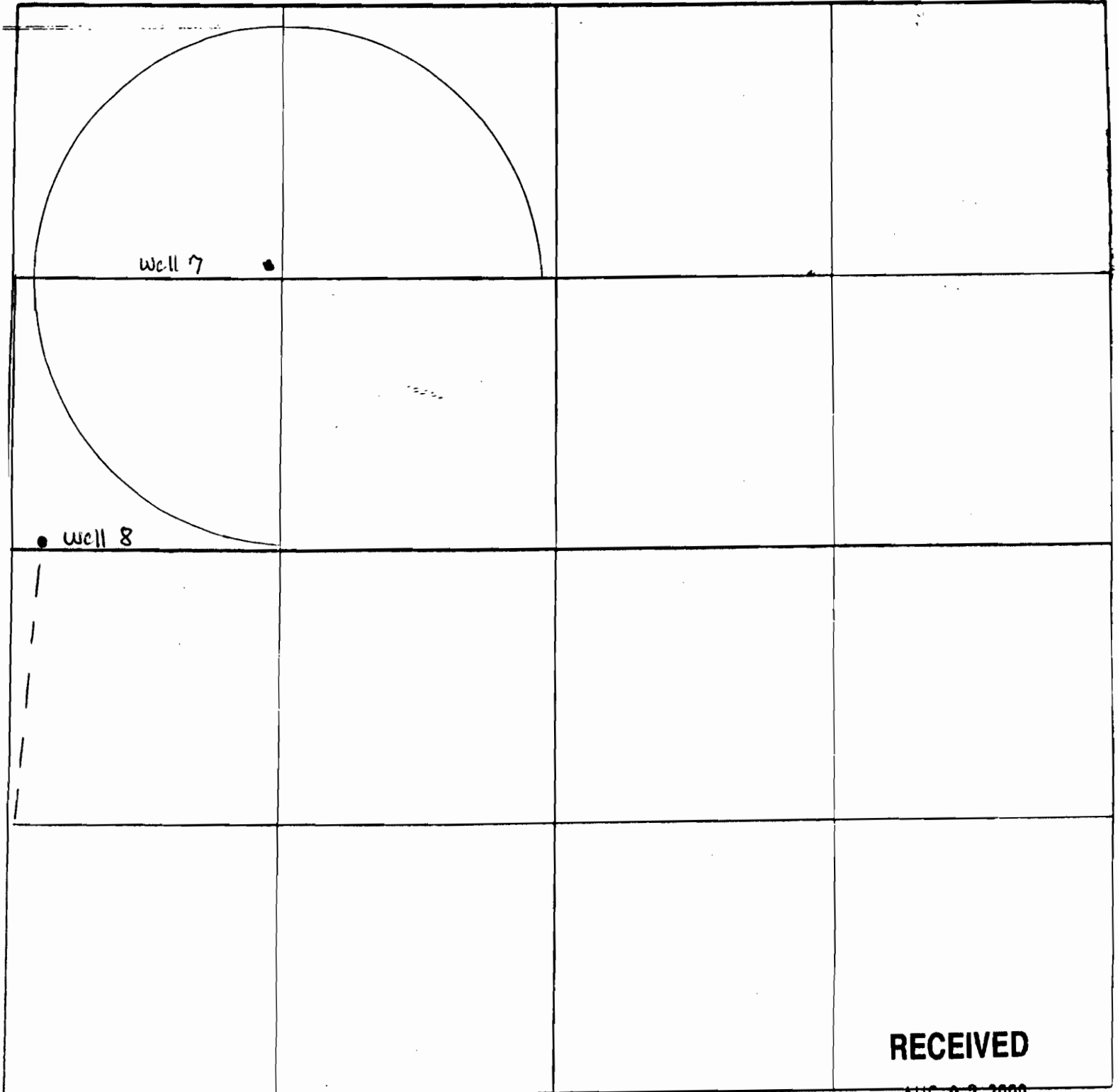
WATER RESOURCES DEPT
SALEM, OREGON

SECTION PLAT

Section 23 Township 23 S Range 33 E

County of HARNEY State of Oregon

NORTH



RECEIVED

AUG 03 2009

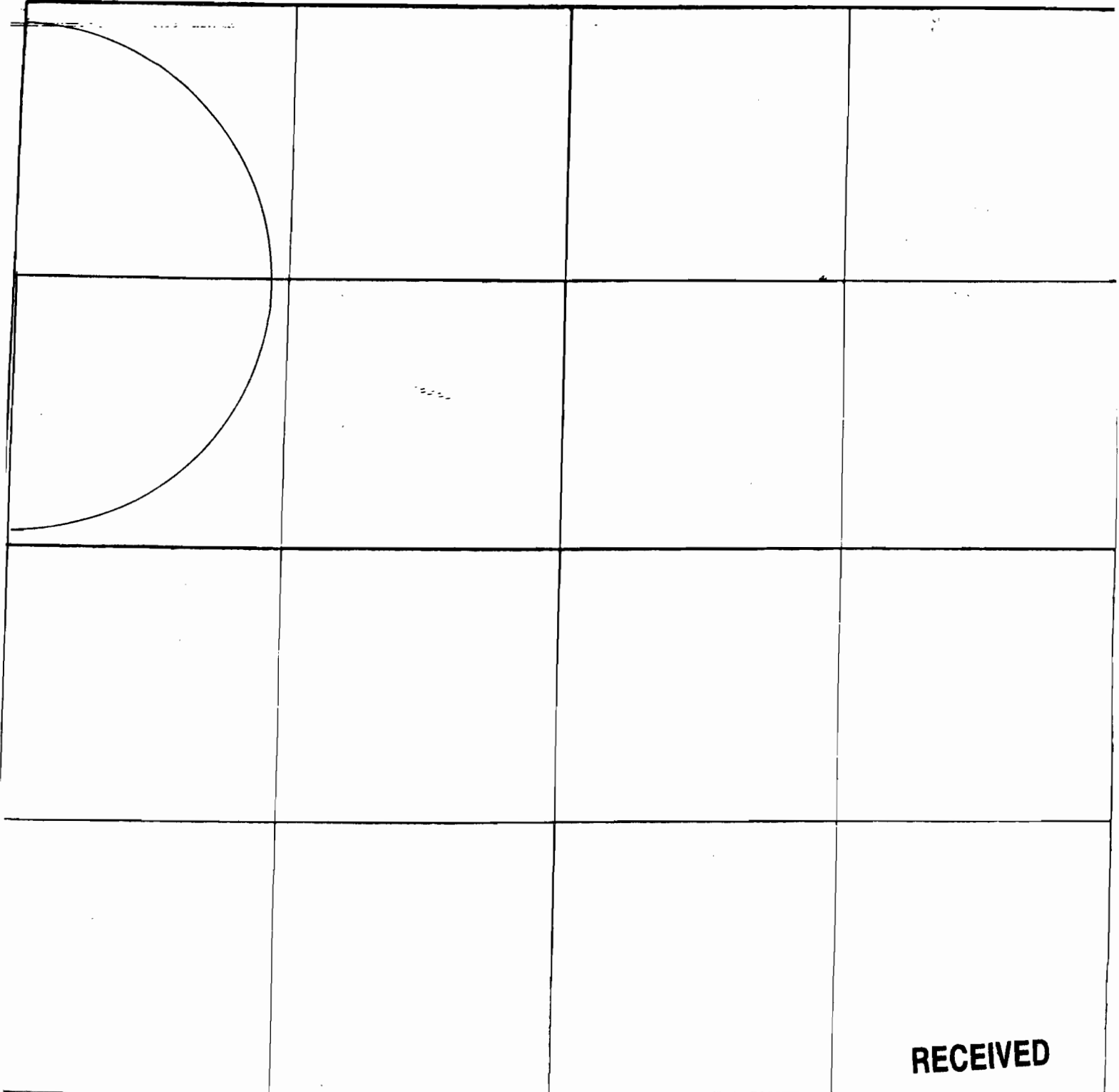
WATER RESOURCES DEPT
SALEM, OREGON

SECTION PLAT

Section ~~26~~ 26 Township 23 S Range 33 E.

County of HARNEY State of Oregon

NORTH



RECEIVED

AUG 03 2009

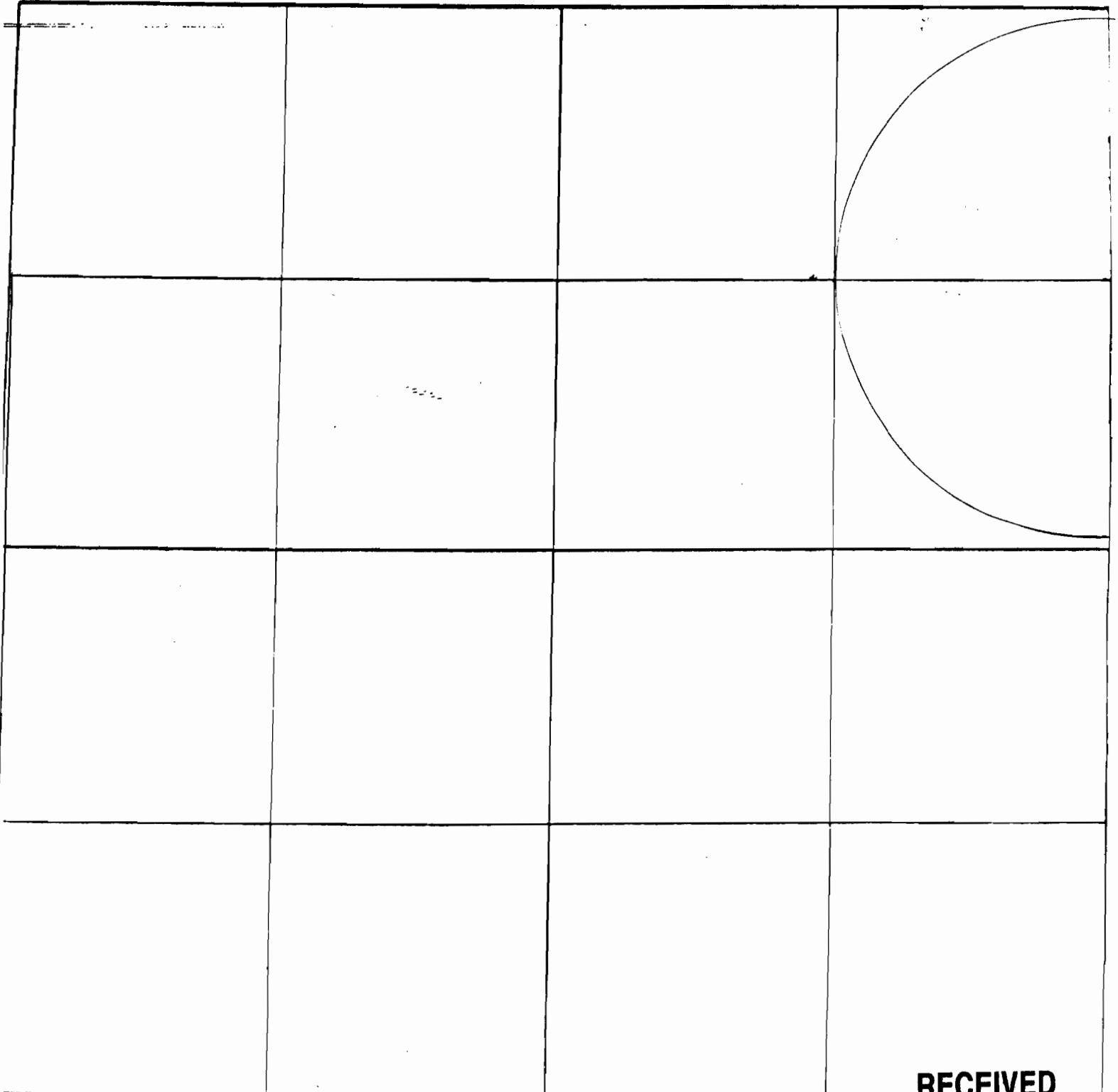
WATER RESOURCES DEPT
SALEM, OREGON

SECTION PLAT

Section 27 Township 23 S Range 33 E.

County of HARNEY State of Oregon

NORTH



RECEIVED

AUG 03 2009

WATER RESOURCES DEPT
SALEM, OREGON

THIS MAP WAS PREPARED FOR
ASSESSMENT PURPOSE ONLY

SECTION 23 T.23S. R.33E. W.M.
HARNEY COUNTY
1"=400'

23 33 23

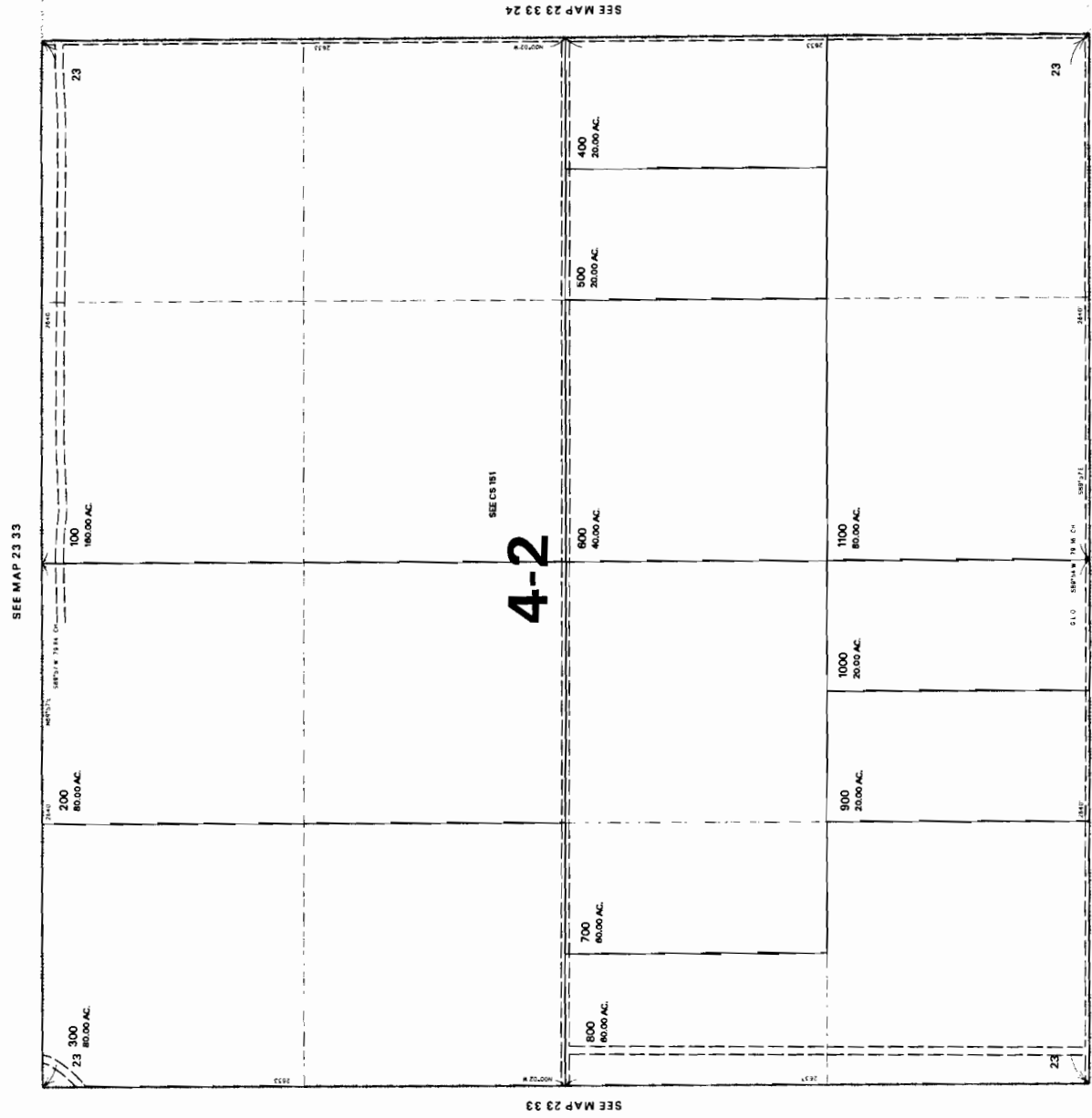
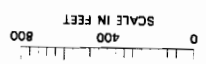
WATER RESOURCES DEPT
SALEM, OREGON

RECEIVED
AUG 03 2009

642749

REVISED: GW
10/16/00

23 33 23



SEE MAP 23 33 24

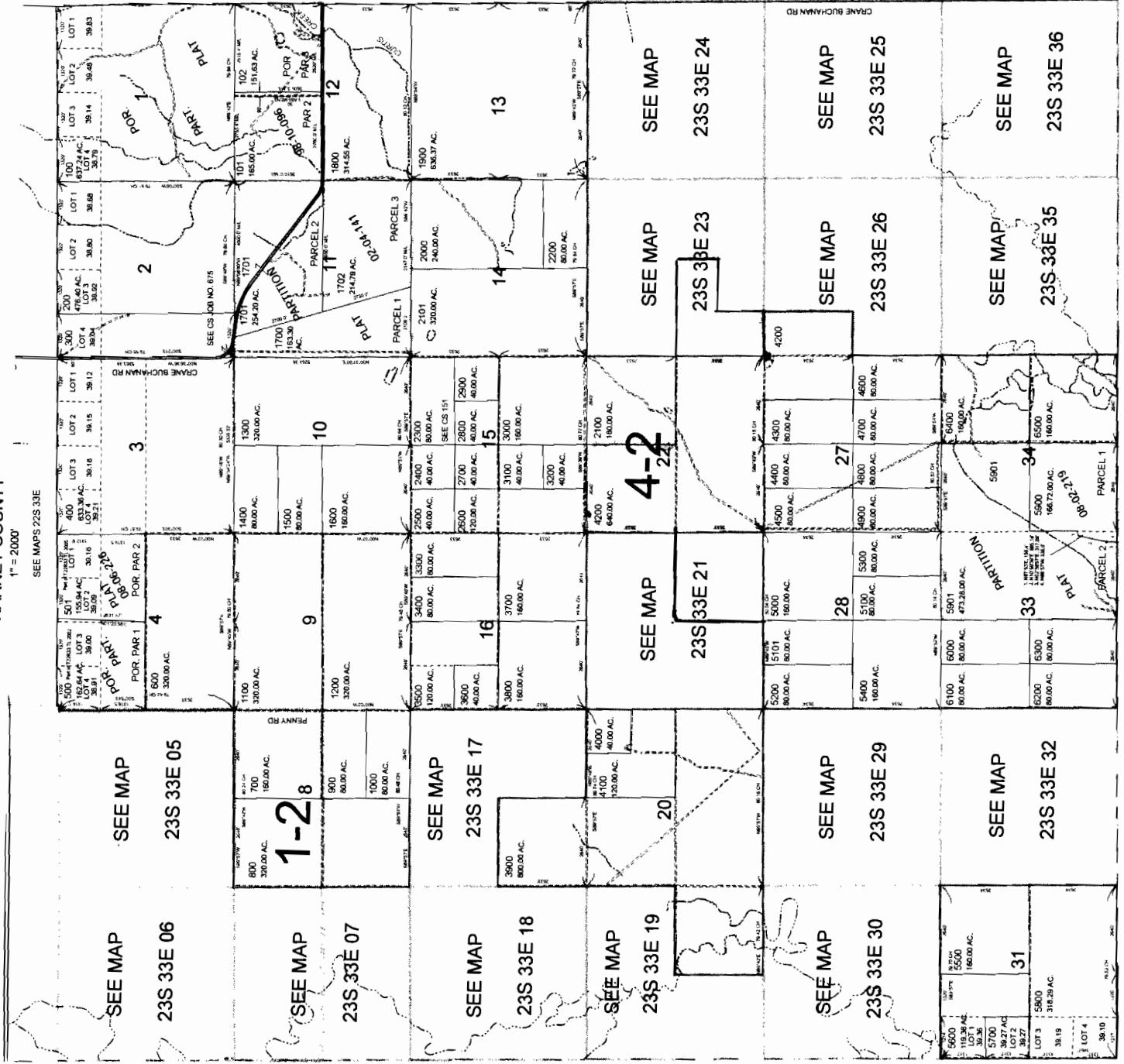
SEE MAP 23 33 26

T.23S. R.33E. W.M.
HARNEY COUNTY

1" = 2000'

SCALE IN FEET
0 2,000 4,000

THIS MAP WAS PREPARED FOR
ASSESSMENT PURPOSE ONLY



RECEIVED

AUG 03 2009

WATER RESOURCES DEPT
SALEM, OREGON

512249

23S 33E
& INDEX

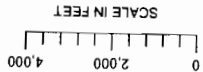
CANCELLED NO.
401
600M1
600M2
700M1
700M2
800M1
800M2
900M1
900M2
1000M1
1000M2
1100M1
1100M2
1200M1
1200M2
1300M1
1300M2
1400M1
1400M2
1500M1
1500M2
1600M1
1600M2
1700M1
1700M2
1800M1
1800M2
1900M1
1900M2
2000M1
2000M2
2100M1
2100M2
2200M1
2200M2
2300M1
2300M2
2400M1
2400M2
2500M1
2500M2
2600M1
2600M2
2700M1
2700M2
2800M1
2800M2
2900M1
2900M2
3000M1
3000M2
3100M1
3100M2
3200M1
3200M2
3300M1
3300M2
3400M1
3400M2
3500M1
3500M2
3600M1
3600M2
3700M1
3700M2
3800M1
3800M2
3900M1
3900M2
4000M1
4000M2
4100M1
4100M2
4200M1
4200M2
4300M1
4300M2
4400M1
4400M2
4500M1
4500M2
4600M1
4600M2
4700M1
4700M2
4800M1
4800M2
4900M1
4900M2
5000M1
5000M2
5100M1
5100M2
5200M1
5200M2
5300M1
5300M2
5400M1
5400M2
5500M1
5500M2
5600M1
5600M2
5700M1
5700M2
5800M1
5800M2
5900M1
5900M2
6000M1
6000M2
6100M1
6100M2
6200M1
6200M2
6300M1
6300M2
6400M1
6400M2
6500M1
6500M2

Decided
LAMES

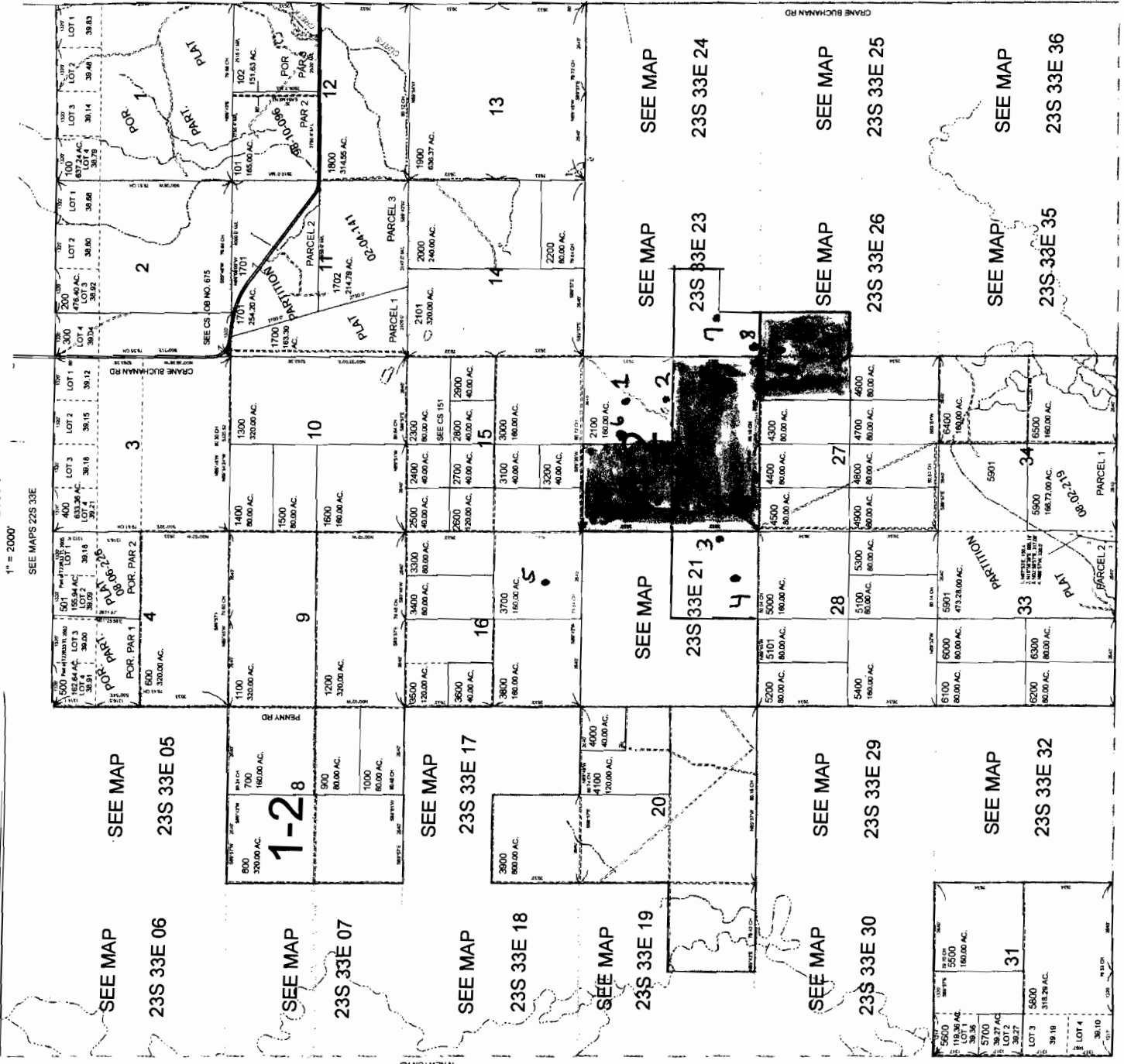
State Law

PRINTED ON
Jul 07, 2008
23S 33E
& INDEX

THIS MAP WAS PREPARED FOR ASSESSMENT PURPOSE ONLY



T.23S. R.33E. W.M. HARNEY COUNTY



SEE MAPS 23S 32VE

SEE MAPS 23S 34E

SEE MAPS 24S 33E

23S 33E
& INDEX

- CANCELLED NO.
- 401
- 600M1
- 600M2
- 700M1
- 700M2
- 800M1
- 800M2
- 900M1
- 900M2
- 1000M1
- 1000M2
- 1100M1
- 1100M2
- 1200M1
- 1200M2
- 1300M1
- 1300M2
- 1400M1
- 1400M2
- 1500M1
- 1500M2
- 1600M1
- 1600M2
- 1700M1
- 1700M2
- 1800M1
- 1800M2
- 1900M1
- 1900M2
- 2000M1
- 2000M2
- 2100M1
- 2100M2
- 2200M1
- 2200M2
- 2300M1
- 2300M2
- 2400M1
- 2400M2
- 2500M1
- 2500M2
- 2600M1
- 2600M2
- 2700M1
- 2700M2
- 2800M1
- 2800M2
- 2900M1
- 2900M2
- 3000M1
- 3000M2
- 3100M1
- 3100M2
- 3200M1
- 3200M2
- 3300M1
- 3300M2
- 3400M1
- 3400M2

WATER RESOURCES DEPT
SALEM, OREGON

RECEIVED
AUG 03 2009

STATE LEASE
LAND

Wells 1-8

PRIVATE
LAND

PRINTED ON
Jul 07, 2008
23S 33E
& INDEX