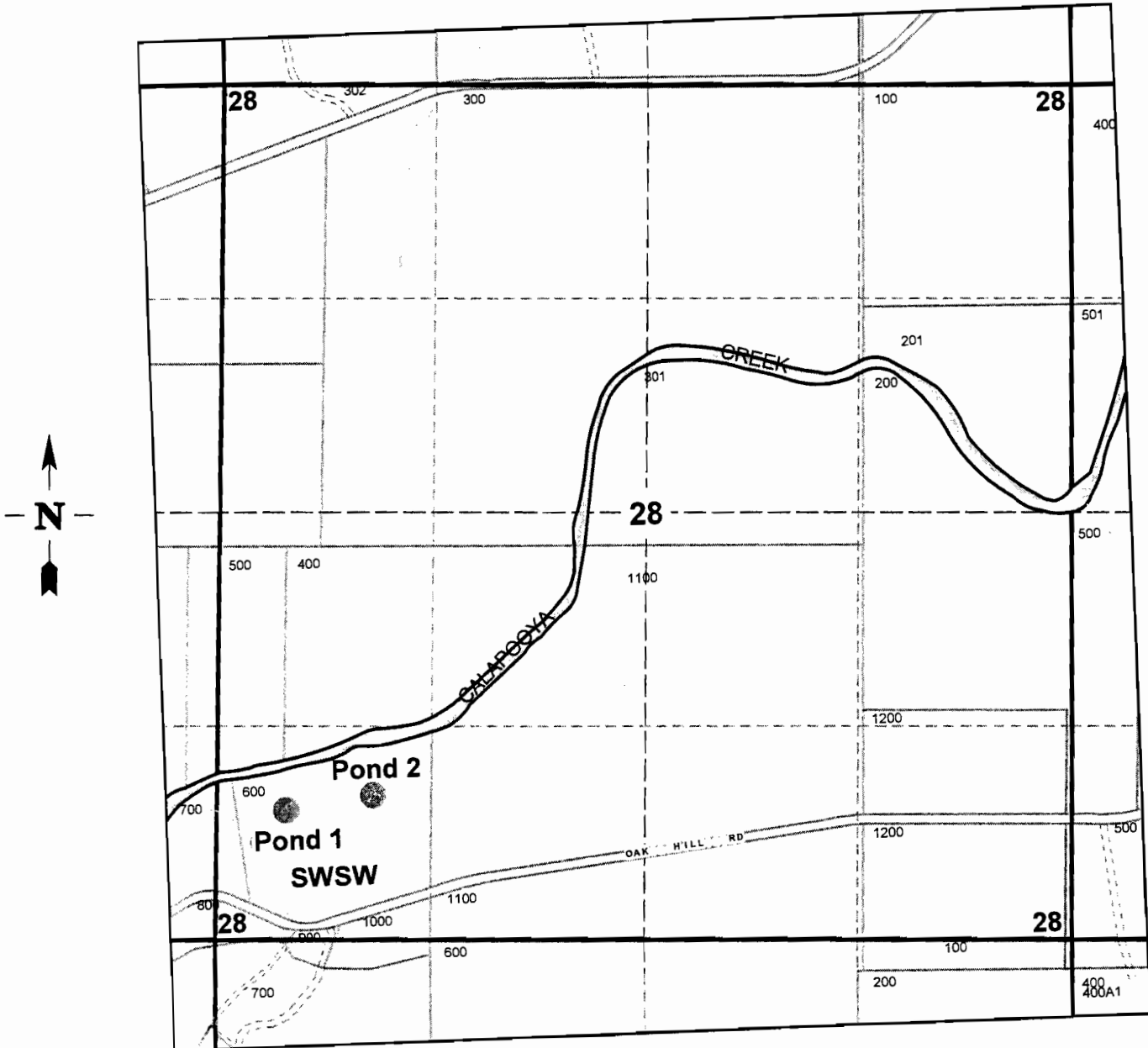


**RECEIVED**

**SEC.28 T.25S. R.6W. W.M.  
DOUGLAS COUNTY  
Scale 1" = 1000'**

AUG 10 2009  
WATER RESOURCES DEPT  
SALEM, OREGON



Pond 1 is located 830 ft. N. and 433 ft. E. of the SW corner of Section 28.

Pond 2 is located 896 ft. N. and 981 ft. E. of the SW corner of Section 28.