

3 2 E 27 ↑
N
Scale 1" = 400'

WORK
26
COPY

22500

SEE
MAP

162-62

R-87515

F U

CENTER SECTION 27

NW COR D.L.C. NO. 49

2100 5.79 Ac. 15454

R. R. F. F-5

1002 20.31 Ac. 15797

1000 20.02 Ac. 15761

SW 1/4 NE 1/4

Note: Existing Stream does not empty into the existing pond as shown on county assessor tax lot map. It instead is located east of the pond and does not intersect the pond.

Existing pond

Proposed expansion LOT

P.O.D. 34.69

NW 1/4 SE 1/4

1100 1.15 Ac.

PARTITION PLAT 1991-179 PARCEL 1

1001 35.85 Ac. 15917

LOCATIONS FROM CENTER SECTION

1101 1.79 Ac.

DAM

780 ft EAST 130 ft SOUTH

POD

630 ft EAST 530 ft SOUTH

S. BEAVER 1178.44 GLEN DR.

1400 1.72 Ac. 15800

401 1.00 Ac. 15809

1300 3.80 Ac. 15436

1201 4.88 Ac. 15896

1200 1.77 Ac. 15892

1500 2.22 Ac. LOT 15778

39.99

1601 1.95 Ac. 15770

1600 21.99 Ac. 15830

NLY NE COR CHAS. F. BEATIE D.L.C. NO. 49

WATER RESOURCES DEPT SALEM, OREGON

AUG 17 2009

RECEIVED

1602 5.03 Ac. 22621 22843

990 17.49 Ac.

901 4.95 Ac.

902 9.41 Ac.

2000 2.16 Ac. 15530

1801 2.13 Ac. 15550

1803 5.14 Ac. 15560

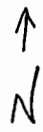
1800 5.26 Ac. 15800

1804 2.84 Ac.

1701 9.77 Ac.

1700 61.01 Ac. 22895 22809

3 2 E 27



Scale 1" = 400'

WORK COPY

22500

SEE MAP

RD 36

331 S KAMRATH RD

162-62

3 2 E 27
 ↑
 N
 Scale 1" = 400'

1002
 20.31 Ac.
 15797

1000
 20.02 Ac.
 15781

1001
 35.85 Ac.
 15917

1101
 1.79 Ac.

Note: Existing Stream does not empty into the existing pond as shown on county assessor tax lot map. It instead is located east of the pond and does not intersect the pond.

F U

1332.34

695.52

S BEAVER 1178.44 GLEN DR.

1/4 COR.

22500

990
 17.49 Ac.

Existing pond

901
 4.95 Ac.

1400
 1.72 Ac.
 15800

1300
 3.80 Ac.
 15436

1201
 4.88 Ac.
 15896

1200
 1.77 Ac.
 15892

Proposed expansion LOT

34.69

902
 9.41 Ac.

1500
 2.22 Ac.
 LOT 15776

39.99

1601
 1.95 Ac.
 15770

1602
 5.03 Ac.
 22621
 22843

1100
 1.15 Ac.

1600
 21.99 Ac.
 15830

WATER RESOURCES DEPT
 SALEM, OREGON

AUG 17 2009

RECEIVED

NLY NE COR
 CHAS. F. BEATIE
 D.L.C. NO. 49

NW COR
 O.L.C.
 NO. 49

2000
 2.16 Ac.
 15530

1801
 2.13 Ac.
 15550

1803
 5.14 Ac.
 15560

1800
 5.26 Ac.
 15600

1701
 9.77 Ac.

1700
 61.01 Ac.
 22895
 22909

2100
 5.79 Ac.
 15454

1804
 2.84 Ac.

PARTITION
 PLAT
 1991-179
 PARCEL 1

R. R. F. F-5

162-62

R-87575