

T.1N.,R.23E.,W.M.

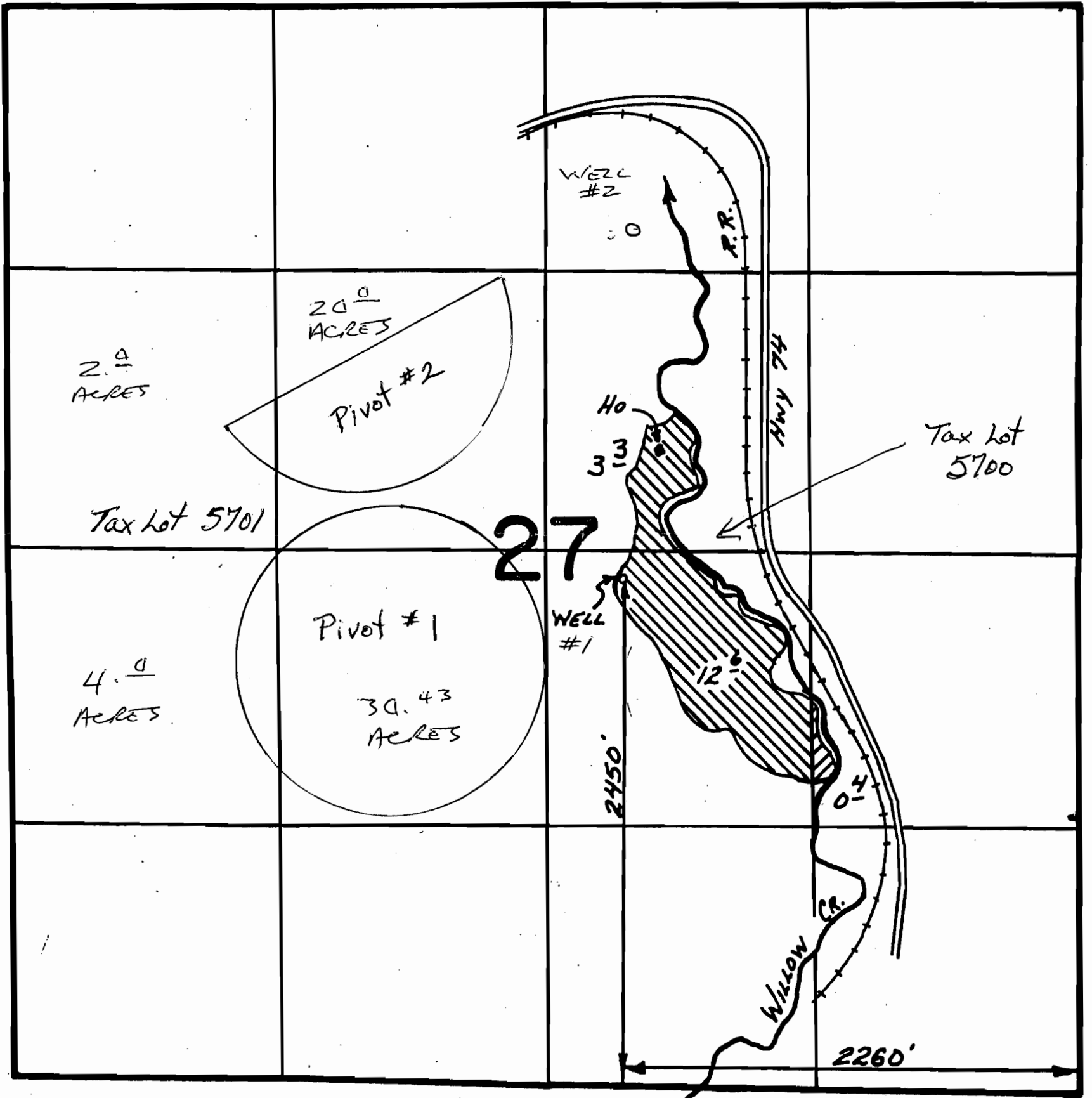
RECEIVED

AUG 14 2009

WATER RESOURCES DEPT
SALEM, OREGON

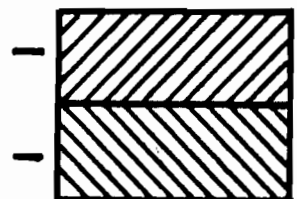
WELL #2 PER CERT. 83641
LOCATED FROM NE CORNER SECTION 27
1120 FT SOUTH
2180 FT WEST

SBP
8/21/09



Primary Irrigation

Supplemental Irrigation



REVISED ADJUSTED
APPROX SCALE
1" = 600 FEET

FINAL PROOF SURVEY UNDER