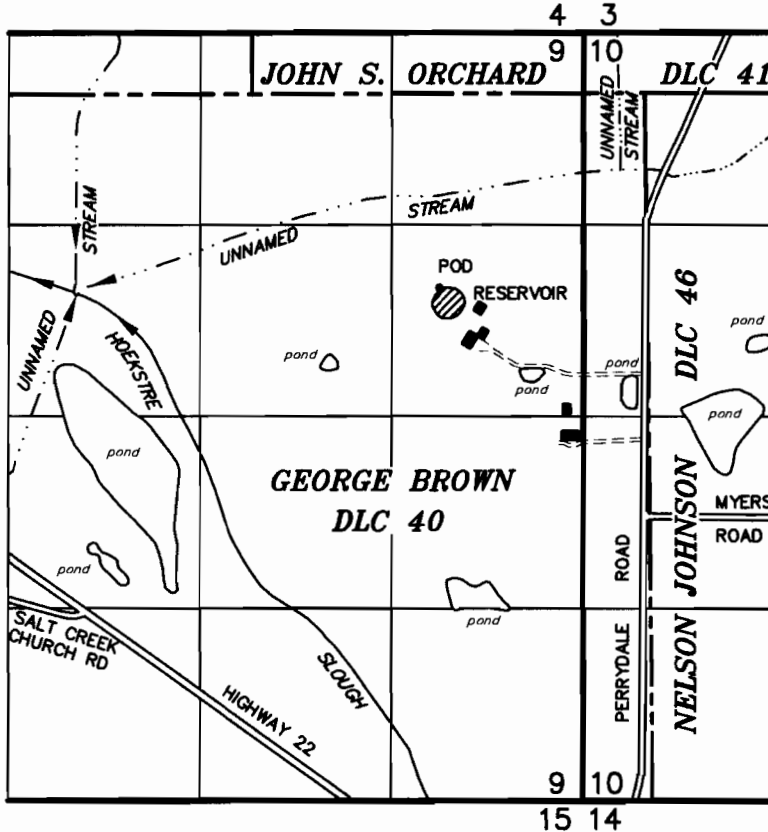


T7S, R5W, WM

POLK COUNTY

TAX LOTS:
7.5.9 100
7.5.9 106



POD: 1338' S & 1408' W OF THE NE CORNER OF GEORGE BROWN DLC 40

APPLICATION TO CONSTRUCT A RESERVOIR

UNDER

Application No. _____ Permit No. _____

IN THE NAME OF

WEISENSEE LIVING TRUST

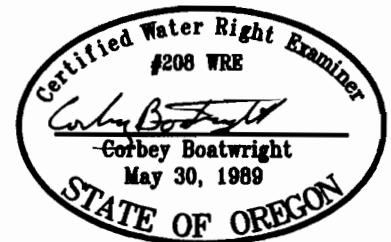
AUGUST 6, 2009

SCALE: 1" = 1320'

RECEIVED

AUG 26 2009

WATER RESOURCES DEPT
SALEM, OREGON



NOTE: This map is not intended to provide legal dimensions or locations of property ownership lines.

RENEWAL DATE 12-31-09

SEC.9 T7S R5W WM
POLK COUNTY

Scale 1" = 400'

IMPORTANT
This Map for Assessment
and Taxation Purposes
ONLY

4 3
9 10

N.W. CORNER
NELSON JOHNSON
DLC NO. 46

N.W. CORNER
GEORGE BROWN
DLC NO. 40

S.W. CORNER
DLC NO. 41

See Map 7.5.4

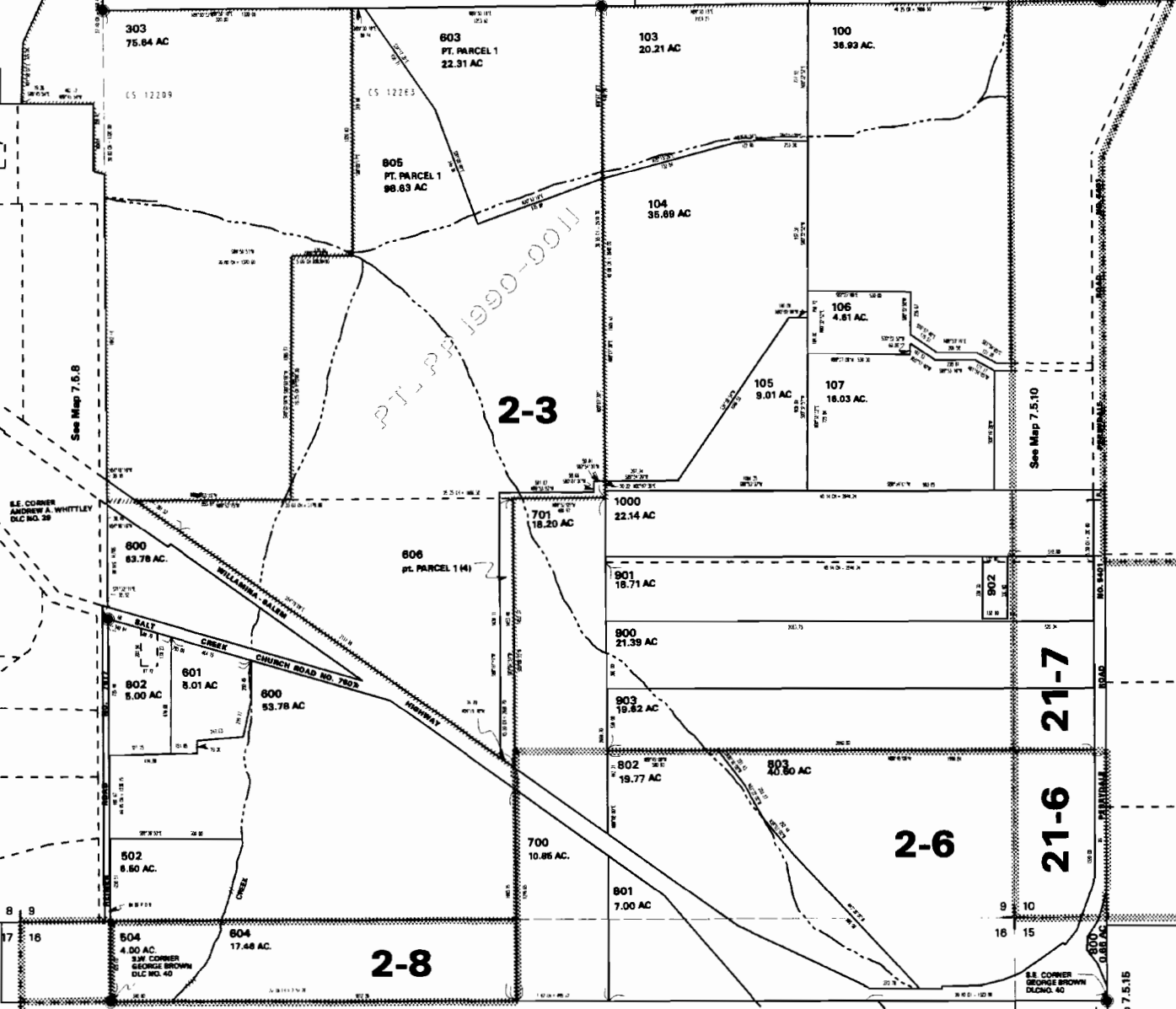
Canceled No.

- 101
- 102
- 200
- 300
- 301
- 302
- 304
- 305
- 306
- 307
- 400
- 500
- 501
- 503
- 1001
- 1100

PT. PAR. 1990-0011

2-3

See Map 7.5.10



See Map 7.5.8

S.E. CORNER
ANDREW A. WHITTELY
DLC NO. 39

RECEIVED

AUG 26 2009

WATER RESOURCES DEPT
SALEM, OREGON

See Map 7.5.16

See Map 7.5.15

9 10
16 15

S.E. CORNER
GEORGE BROWN
DLC NO. 40