

SECTION PLAT

Section 29

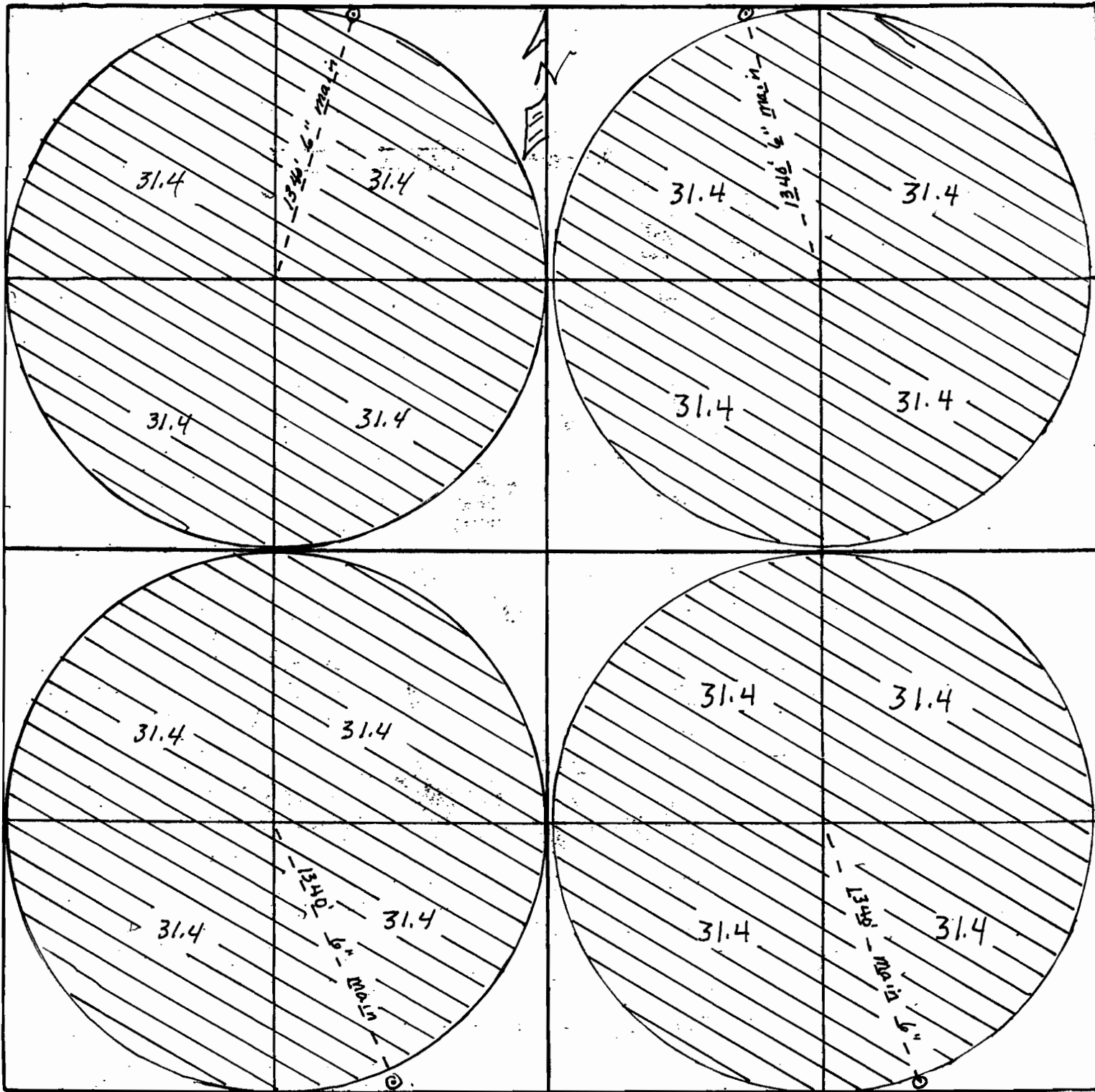
Township 24-5

Range 32 1/2 - E

County of Harney

State of OREGON

NORTH



Remarks scale - 8" = 1 mile - 660' -

RECEIVED

AUG 25 2009

WATER RESOURCES DEPT
SALEM, OREGON

SECTION PLAN

Section 29

Township 24-5

Range 32 1/2 - E

County of Harney

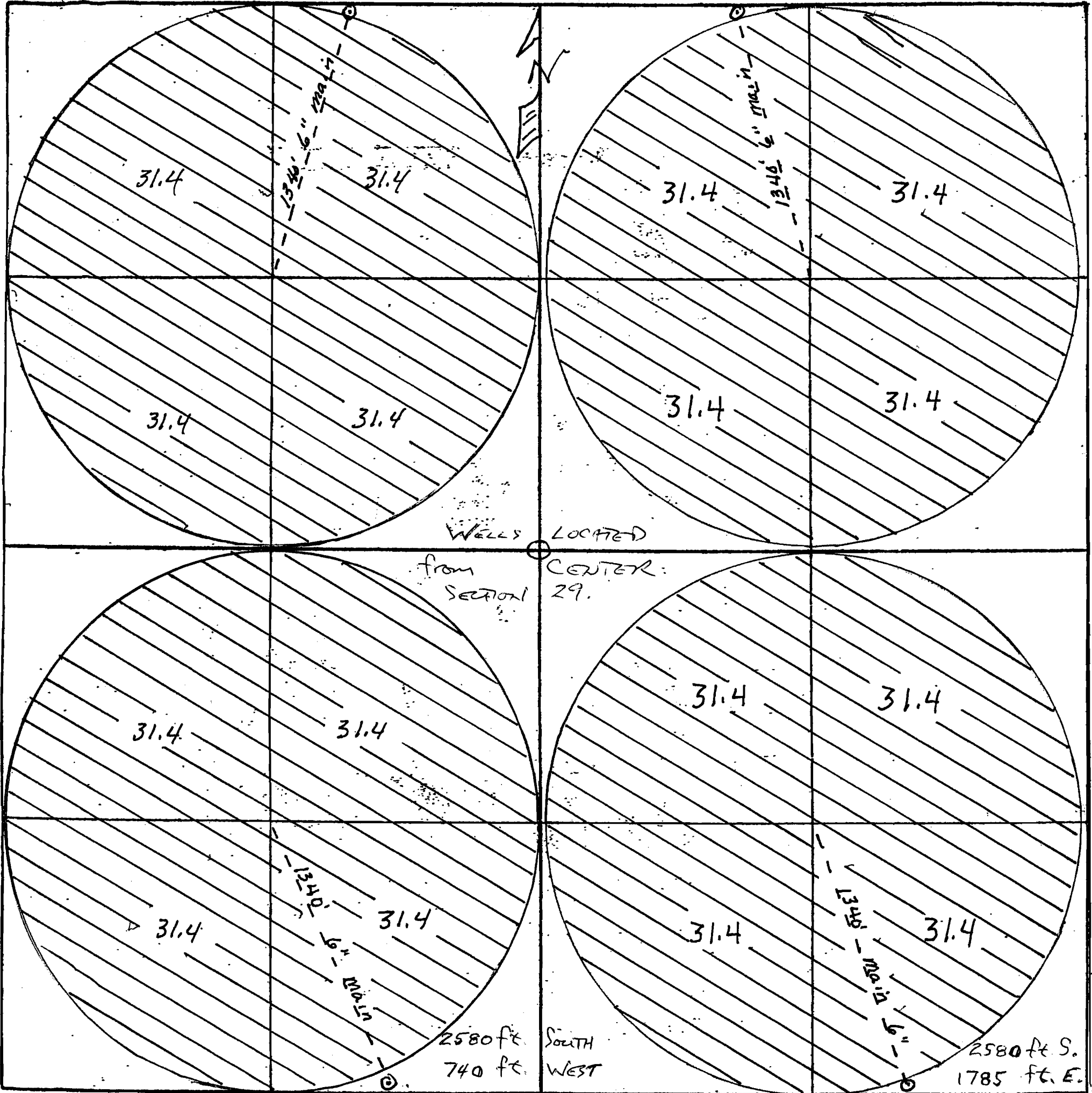
State of Oregon

REVISED CORRECTED
Approx SCALE
1" = 500 FT.

2610 ft NORTH
925 ft WEST

WELL #1

2610 ft N.
NORTH 960 ft. E. WELL #2



WELLS LOCATED
from SECTION 29. CENTER.

2580 ft SOUTH
740 ft WEST

2580 ft S.
1785 ft. E.

WELL #3

WELL #4