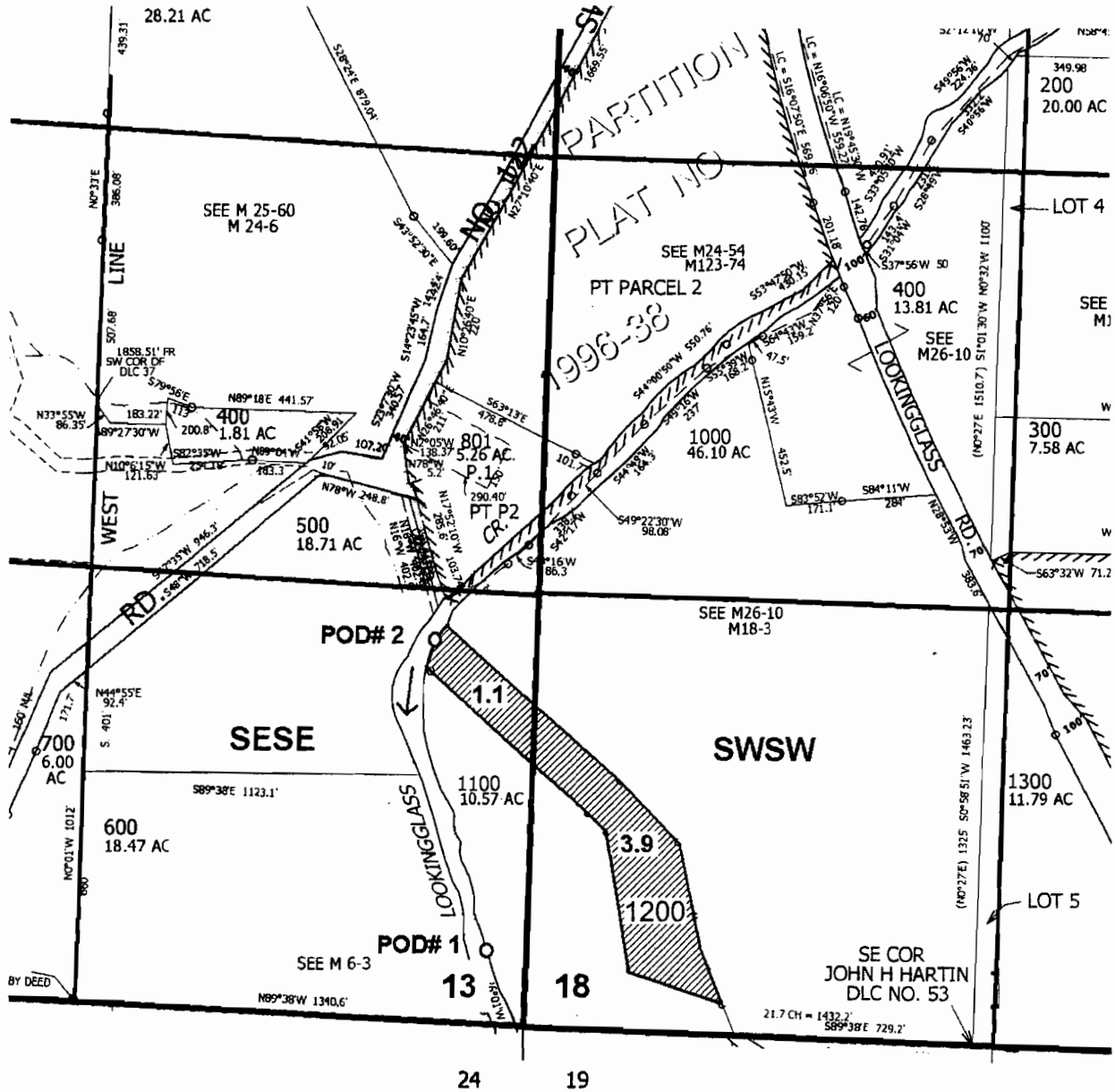


T. 28 S.

R. 7 W.

R. 6 W.

Scale: 1" = 500'



POD#1: 220 ft. N. and 115 ft. W.

} from the SE corner of Sec. 13

POD#2: 1110 ft. N. and 300 ft. W.

RECEIVED

SEP 21 2009

WATER RESOURCES DEPT
SALEM, OREGON