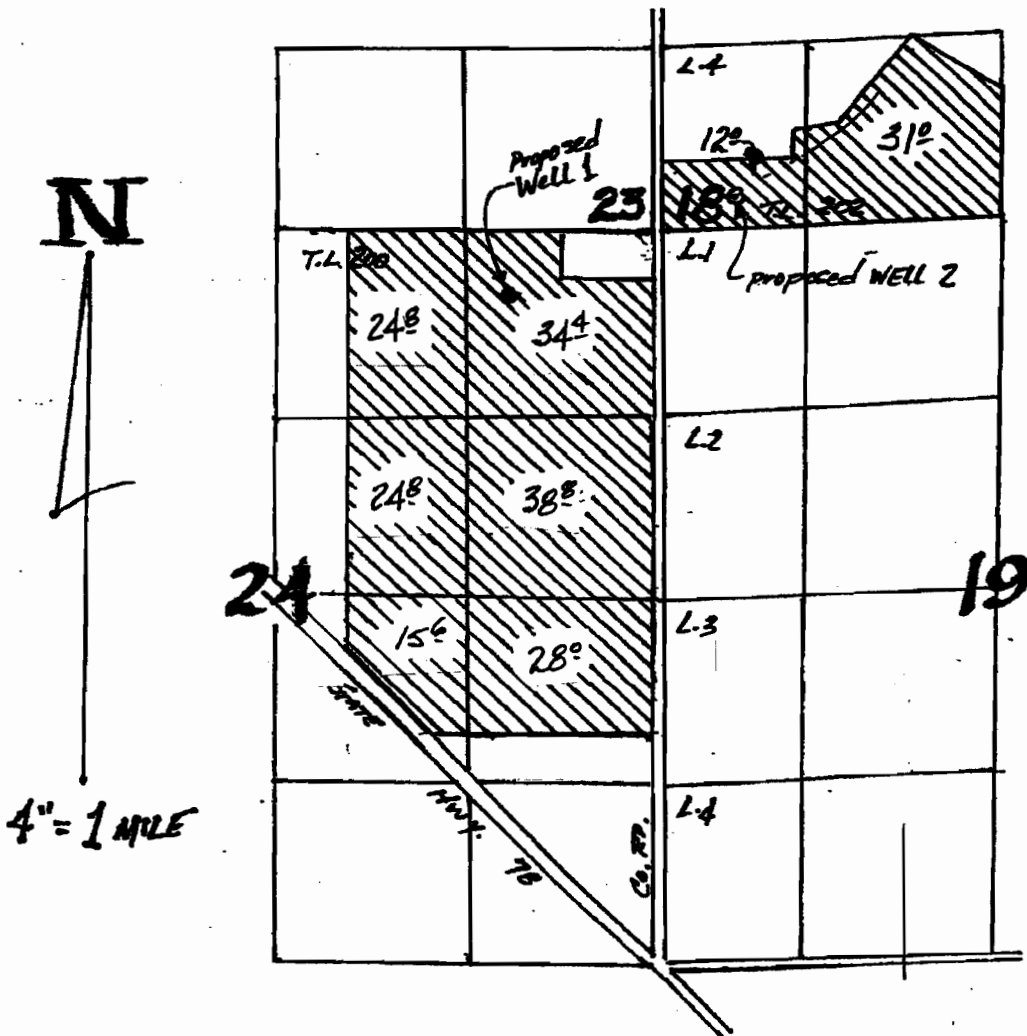


AMENDED JULY 6, 2009  
**APPLICATION MAP for  
 STEVE RICKMAN**

**T. 23 S., R. 31 & 32 E., W.M.**



**RECEIVED**  
 JAN 28 2008  
 WATER RESOURCES DEPT  
 SALEM, OREGON

WELLS LOCATED: #1-460' S. & 1120' W.; #2-280' N. & 520' E.;  
 both from NE Cor. Sec. 24.

**RECEIVED**

JUL 29 2009

WATER RESOURCES DEPT  
 SALEM, OREGON