

- TAX LOT BOUNDARY ——— OLD PROPERTY LINE - - - - -
- ROAD RIGHT-OF-WAY ——— VACATED RIGHT-OF-WAY - - - - -
- RAILROAD ——— RAILROAD RIGHT-OF-WAY - - - - -
- STREAM, LAKE, ETC. TAX LOT BOUNDARY ——— STREAM, LAKE, ETC. NON-BOUNDARY - - - - -
- SUBDIVISION BOUNDARY ——— PARTITION PLAT BOD. - - - - -
- TAX CODE BOUNDARY ——— EASEMENT - - - - -

- SYMBOL TYPES**
- D.L.C.
  - CONTROL POINTS
  - SURVEY MONUMENTS
  - C.L.D. CORNERS
  - SECTION 1/4 SEC 1/16 SEC
  - 1/4 COR 1/2 COR

**NUMBERS**  
TAX CODE NO.  
**000 00 00 0**

ACREAGE - ALL ACREAGES EXCLUDE ANY PORTION THAT MAY LIE WITHIN THE INDICATED PUBLIC RIGHT OF WAYS.

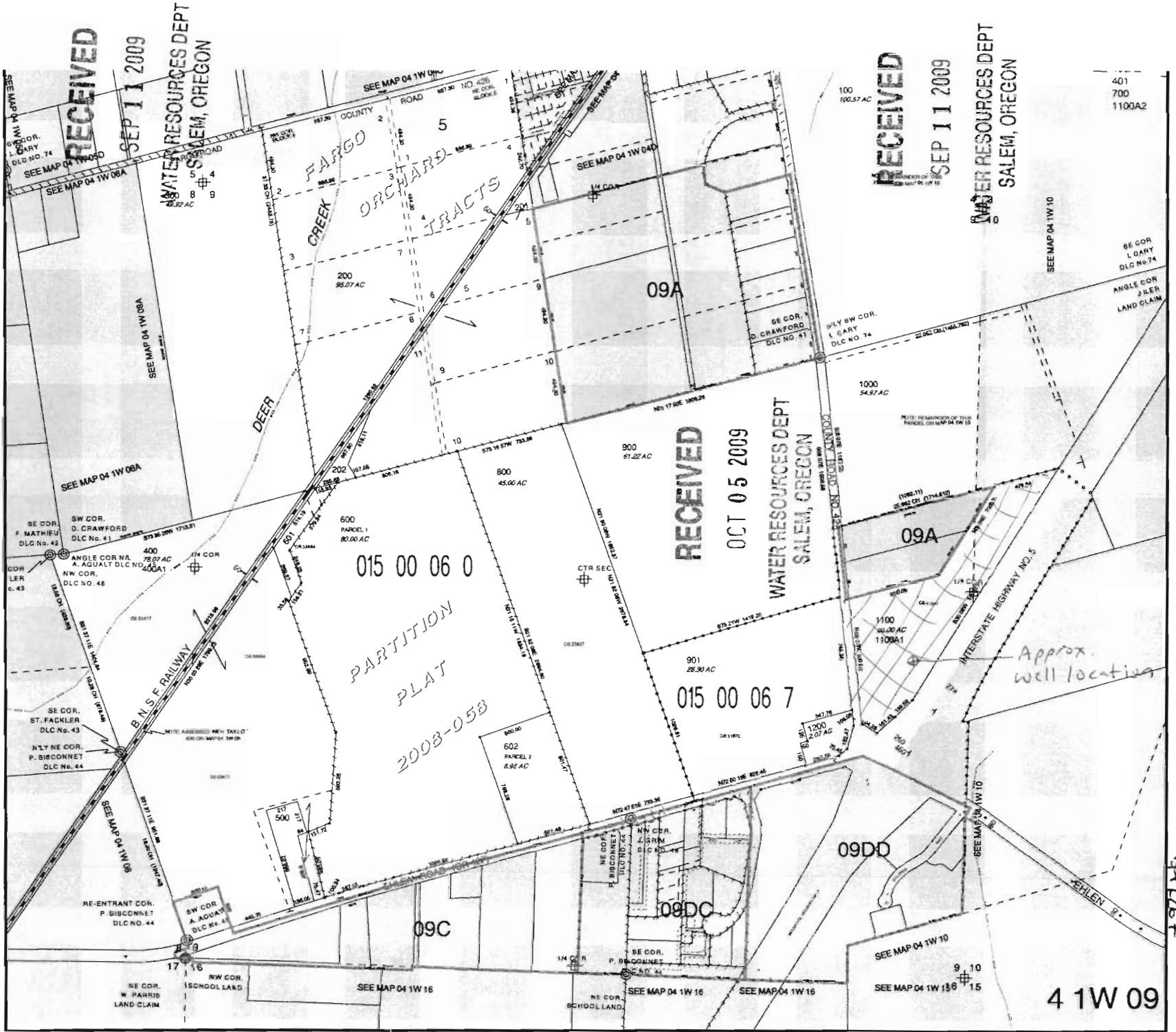
TICK MARKS - WHEN A TICK MARK IS INDICATED ON THE EXTENSION OF A LINE, THEN THE DIMENSION GOES TO THE TICK MARK. GENERALLY THIS IS USED WHEN DIMENSIONS GO INTO PUBLIC RIGHT OF WAYS.

ARROWS ARE USED WITH DIMENSIONS IN AREAS OF GREATER COMPLEXITY.

**NOTICE: This map was created for Assessor's Office use ONLY.**



SCALE 1" = 400'  
OF 1:4800  
Plat file created: August 5, 2008  
AsstMapGis041W09@clackwa.gov



TA Operating LLC 21350 Bents Road NE Aurora, OR 97002 Place of Use

542267



RECEIVED

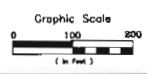
OCT 05 2009

WATER RESOURCES DEPT  
SALEM, OREGON

RECEIVED

SEP 11 2009

WATER RESOURCES DEPT  
SALEM, OREGON



30600.12 - 1A-Aurora - Fig 2.dwg 02/22/08 - 11:55am TAB: 1-208



- Property Line
- Pond
- Curb
- Fence Line
- Storm Sewer Line

**LEGEND**

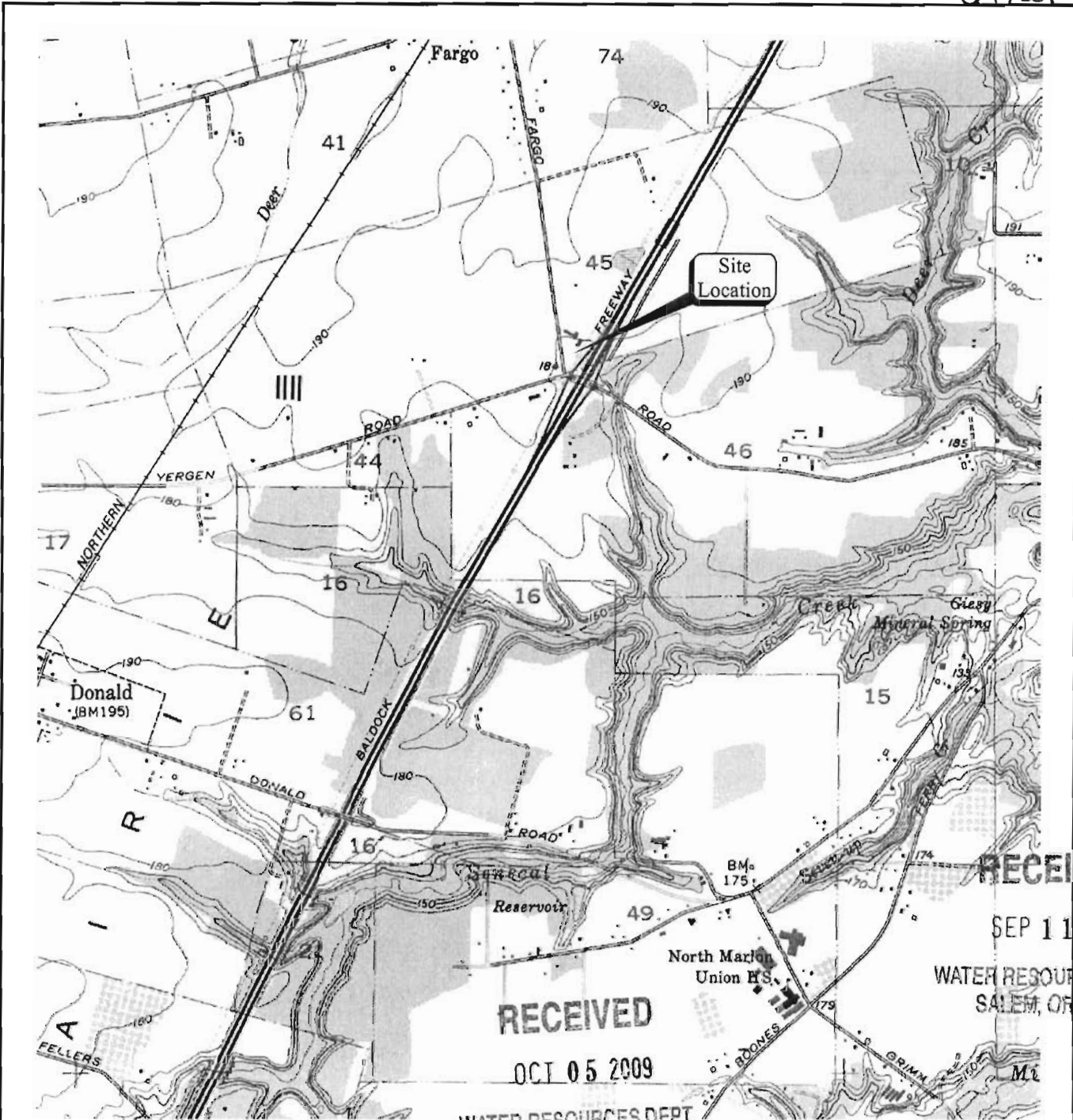
- Storm Water Flow
- Catch Basin
- Drainage Swale and Direction of Water Flow

- Drainage Area 1
- Drainage Area 2
- Drainage Area 3
- Drainage Area 4

**TRAVELCENTERS OF AMERICA**  
 Figure 2  
 General Location Map  
 Portland TravelCenter  
 21856 Benits Road  
 Aurora, Oregon

Drawn By: SLR      Date: 2/11/08      Scale: 1"=200'

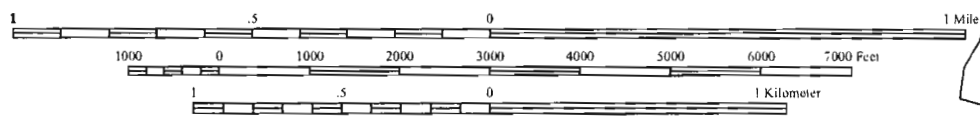
6-17267



30600.12 - TA-Aurora - Fig 1.dwg 02/15/08 - 01:59pm TAB: LAYOUT1



SCALE 1:24000



**LEGEND**

USGS 7.5 Minute Quadrangle  
Woodburn, Oregon  
 45122-B7-TF-024

**TRAVELCENTERS OF AMERICA**

Figure 1.  
 Site Location Map  
 Portland TravelCenter  
 21858 Bents Road  
 Aurora, Oregon

Drawn By: RLR	Date: 2/15/08	Scale: 1"=2000'
------------------	------------------	--------------------

G-17267



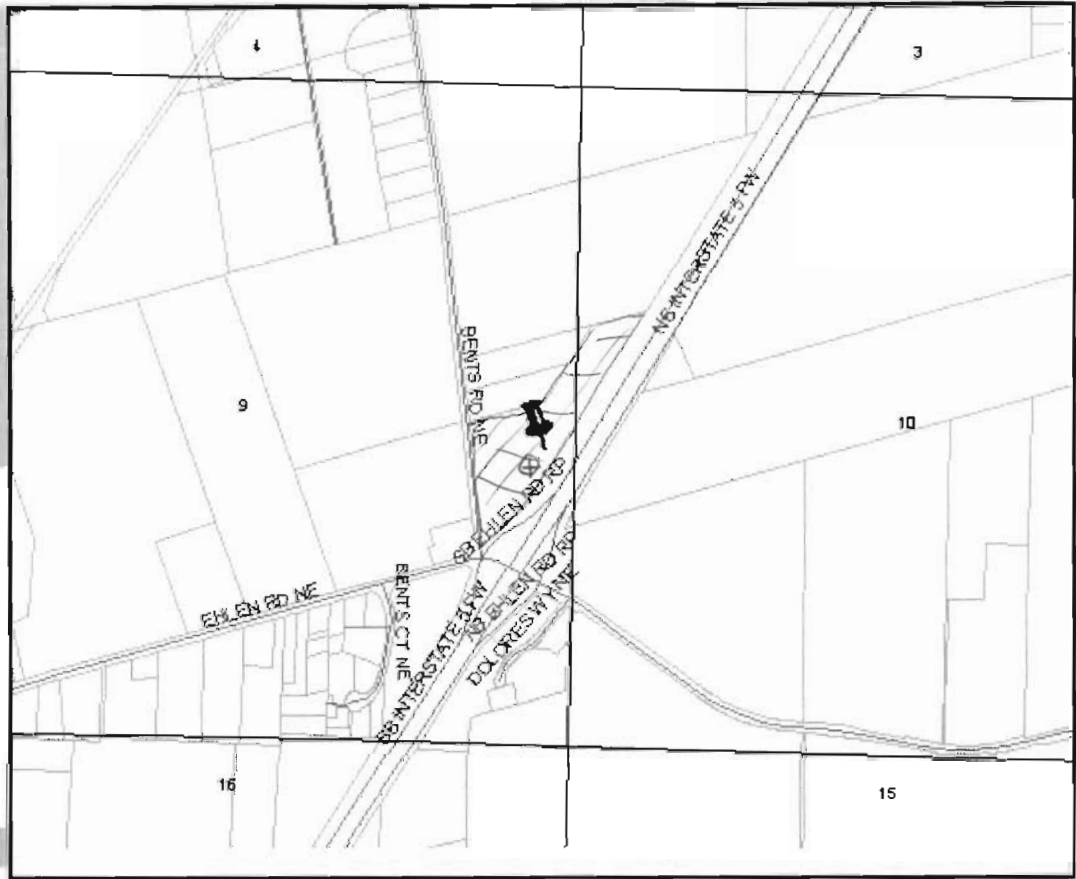
### Marion County Internet Mapper

Address:

Zip:

#### Map Legend

- Aerial East
- Aerial West
- Airports
- Boat Ramps
- Cities
- Comprehensive Landuse Plan
- County Boundary
- Election Precincts
- FEMA 100 YR Flood Plain
- Fire Districts
- Fire Station
- Garbage District
- Golf Course
- Highways
- Interstate



#### Search Results

Parcel	Parcel	ZIP Codes	ZIP Codes	Township and Range
<a href="#">Click for Parcel Info</a>	Situs Address : 21856 BENTS RD NE	City : AURORA	ZIP Code : 97002	TRS : 4S 1W 9

[Click here](#) to view the map symbols

The map information made available on this web site does not represent legally recorded maps or surveys and are not intended to be used as such. Nor should this information be used for navigation or other purpose requiring exacting measurement of distance or direction or precision in the depiction of geographic features. These data provided hereon may be inaccurate or out of date and any person using said information for any purpose whatsoever does so solely at his or her own risk. In no way does Marion County warrant the accuracy, reliability or timeliness of any map information on this site.

**RECEIVED**

SEP 11 2009

WATER RESOURCES DEPT  
SALEM, OREGON

Any feedback regarding this site? Please email [gis@co.marion.or.us](mailto:gis@co.marion.or.us).

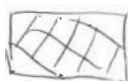
Township 4S Range 1W

NE 1/4 of SE 1/4 of Section 9

**RECEIVED**

OCT 05 2009

WATER RESOURCES DEPT  
SALEM, OREGON



Parcel ⊕ Approx. well location