

LANE COUNTY

W 1/4 →  
Corner  
Sec 23

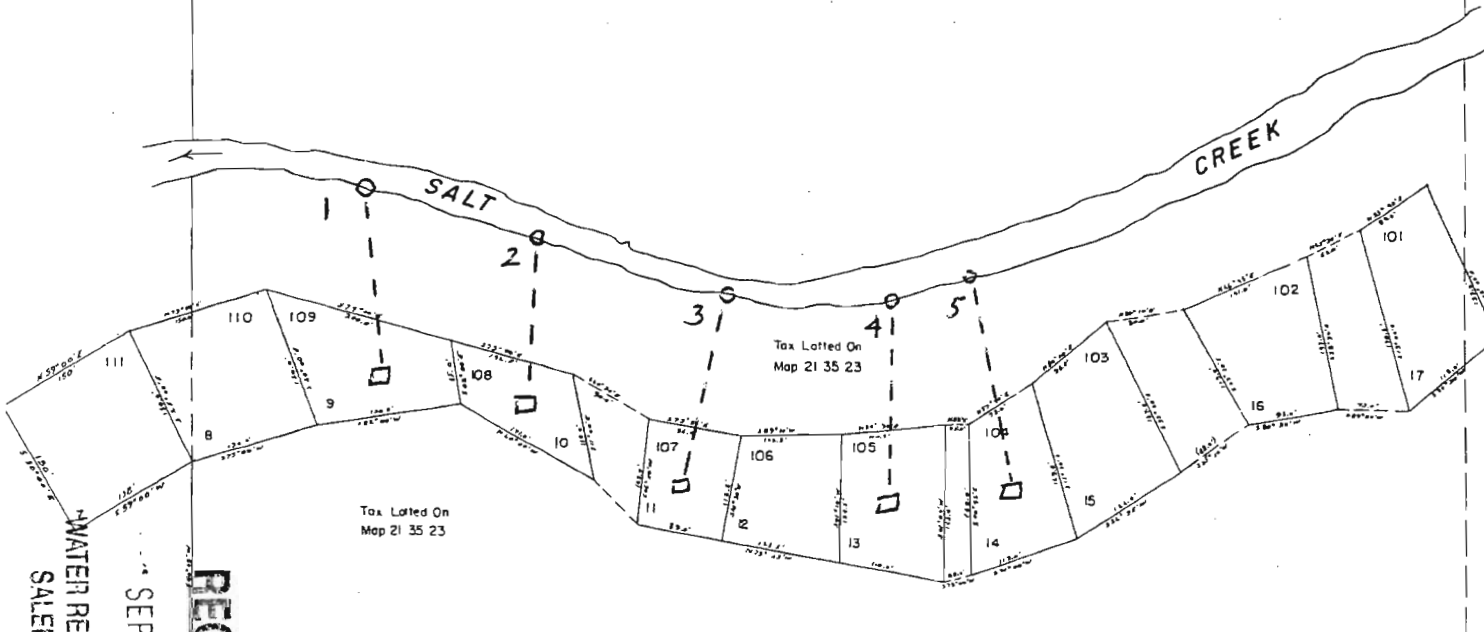
NW 1/4, SW 1/4, Sec 23 T. 21 S, R. 3 E.

All USFS property  
All Tax Lot 100

Scale 1" = 200'

- POD 1: 850'S; 180'E
- POD 2: 900'S; 360'E
- POD 3: 960'S; 555'E
- POD 4: 970'S; 725'E
- POD 5: 945'S; 610'E

all from W 1/4 corner  
Section 23  
T 21 S R 3 E



See Map 21 35 23

RECEIVED

SEP 11 2009

WATER RESOURCES DEPT  
SALEM, OREGON