

**CUTSFORTH PARK
POND TOPOGRAPHICAL
SURVEY, 5/19/09**

Ferguson Surveying



Engineering



**P.O. BOX 519, 210 E. MAIN
MT. VERNON, OR 97865
PHONE (541)932-4520
FAX (541)932-4430
EMAIL dfse@oretelco.net**

Scale 1"=50'

RECEIVED

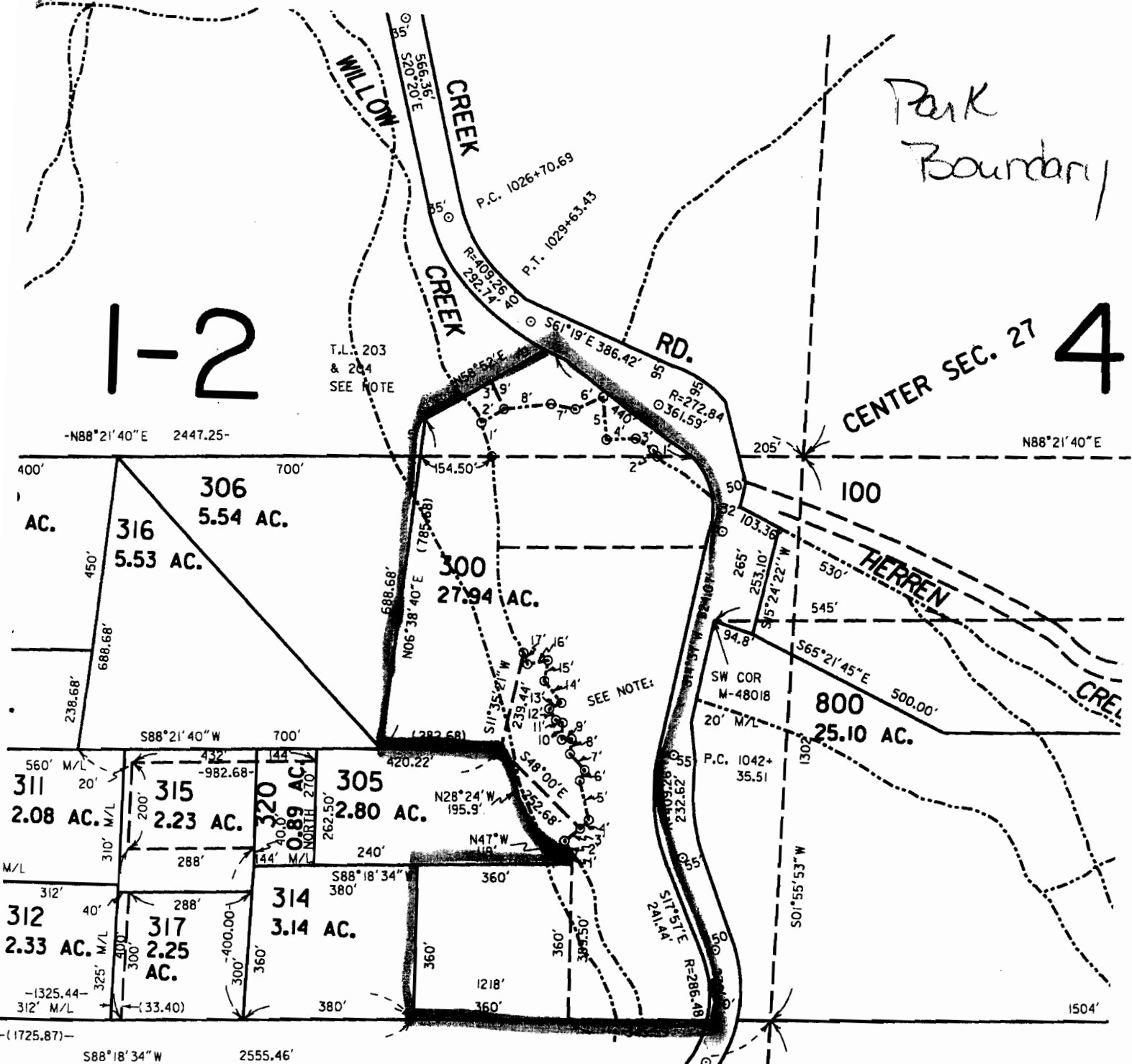
OCT 08 2009

WATER RESOURCES DEPT
SALEM, OREGON

1-2

Park Boundary

CENTER SEC. 27 4



RECEIVED

OCT 08 2009

WATER RESOURCES DEPT
SALEM, OREGON

NOTE: T.L.30

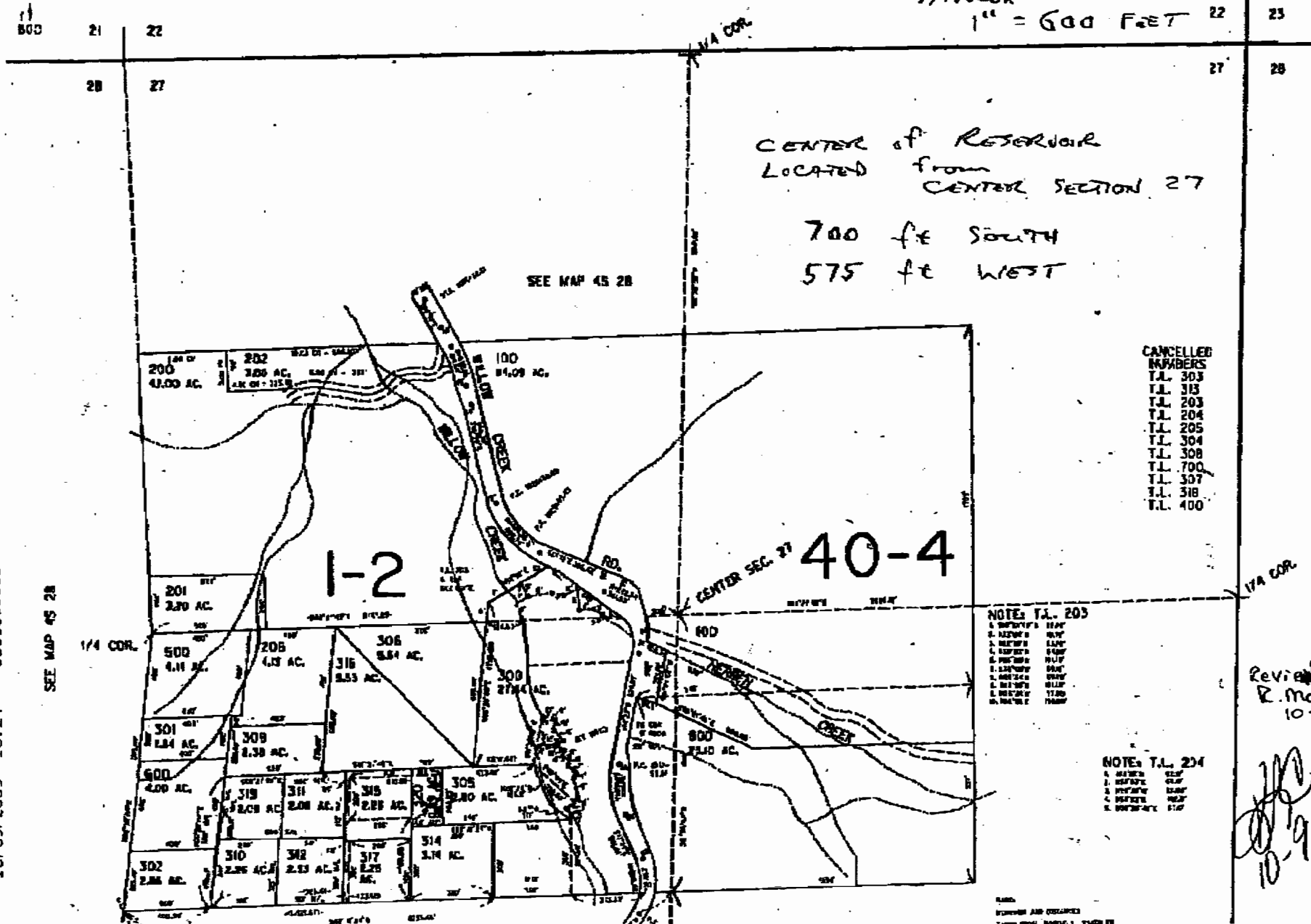
- 1. NORTH 29.50'
- 2. N50°43'W 36.00'
- 3. N47°49'E 47.82'
- 4. N47°49'E 22.38'
- 5. N16°09'W 93.10'
- 6. N29°29'E 37.20'
- 7. N52°33'W 44.80'

THIS MAP WAS PREPARED FOR ASSESSMENT PURPOSE ONLY

SECTION 27 T.4S. R.28E. W.M. MORROW COUNTY

1" = 400'

ADJUSTED CORRECTED APPROX SCALE 1" = 600 FEET



CENTER of RESERVOIR LOCATED FROM CENTER SECTION 27 700 FE SOUTH 575 FE WEST

- CANCELLED MAPS
- T.L. 303
 - T.L. 313
 - T.L. 203
 - T.L. 204
 - T.L. 205
 - T.L. 304
 - T.L. 308
 - T.L. 700
 - T.L. 307
 - T.L. 318
 - T.L. 400

- NOTES T.L. 203
1. BOUNDARY MAP
 2. BOUNDARY MAP
 3. BOUNDARY MAP
 4. BOUNDARY MAP
 5. BOUNDARY MAP
 6. BOUNDARY MAP
 7. BOUNDARY MAP
 8. BOUNDARY MAP
 9. BOUNDARY MAP
 10. BOUNDARY MAP

- NOTES T.L. 204
1. BOUNDARY MAP
 2. BOUNDARY MAP
 3. BOUNDARY MAP
 4. BOUNDARY MAP
 5. BOUNDARY MAP

Reviewed by R. Montimore 10-9-09

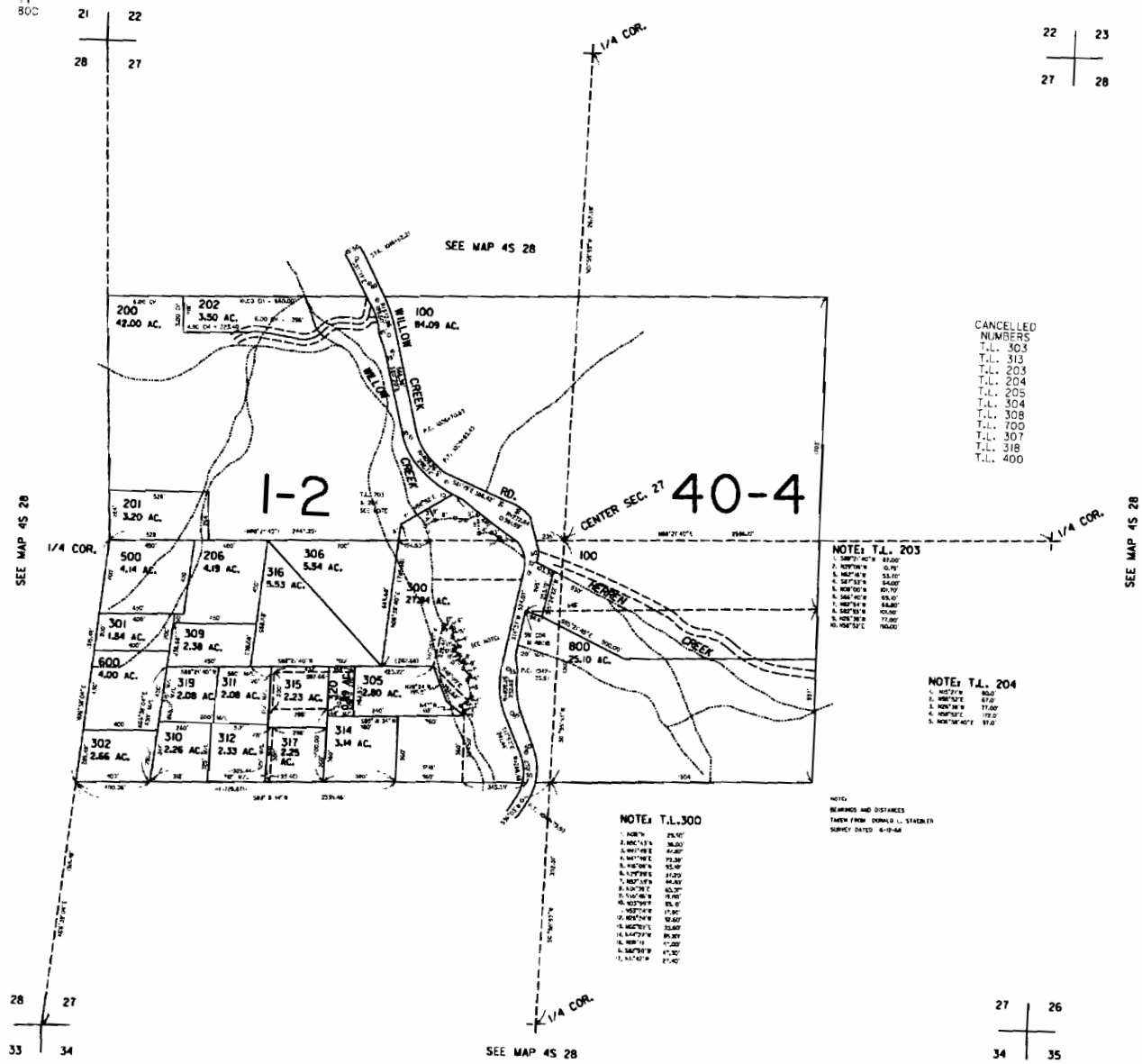
[Handwritten signature]
10-9-09

THIS MAP WAS PREPARED FOR
ASSESSMENT PURPOSE ONLY

SECTION 27 T.4S. R.28E. W.M.
MORROW COUNTY
1" = 400'

4S 28 27

SCALE IN FEET
0 100 200



CANCELLED
NUMBERS
T.L. 303
T.L. 313
T.L. 203
T.L. 204
T.L. 205
T.L. 304
T.L. 308
T.L. 700
T.L. 307
T.L. 318
T.L. 400

NOTE: T.L. 203
1. BEARING 0.0000
2. DISTANCE 0.0000
3. BEARING 0.0000
4. DISTANCE 0.0000
5. BEARING 0.0000
6. DISTANCE 0.0000
7. BEARING 0.0000
8. DISTANCE 0.0000
9. BEARING 0.0000
10. DISTANCE 0.0000

NOTE: T.L. 204
1. BEARING 0.0000
2. DISTANCE 0.0000
3. BEARING 0.0000
4. DISTANCE 0.0000
5. BEARING 0.0000
6. DISTANCE 0.0000

NOTE: T.L. 300
1. NORTH 05.00'
2. N60.00°E 30.00'
3. N00.00°E 40.00'
4. N45.00°E 25.00'
5. N00.00°E 35.00'
6. N00.00°E 45.00'
7. N00.00°E 55.00'
8. N00.00°E 65.00'
9. N00.00°E 75.00'
10. N00.00°E 85.00'
11. N00.00°E 95.00'
12. N00.00°E 105.00'
13. N00.00°E 115.00'
14. N00.00°E 125.00'
15. N00.00°E 135.00'
16. N00.00°E 145.00'
17. N00.00°E 155.00'
18. N00.00°E 165.00'
19. N00.00°E 175.00'
20. N00.00°E 185.00'

NOTE:
BEARINGS AND DISTANCES
TAKEN FROM DONALD L. STICKLER
SURVEY DATED 6-10-88

RECEIVED
OCT 08 2009
WATER RESOURCES DEPT
SALEM, OREGON

Revised
8/12/2005, KH
4S 28 27

R-27536