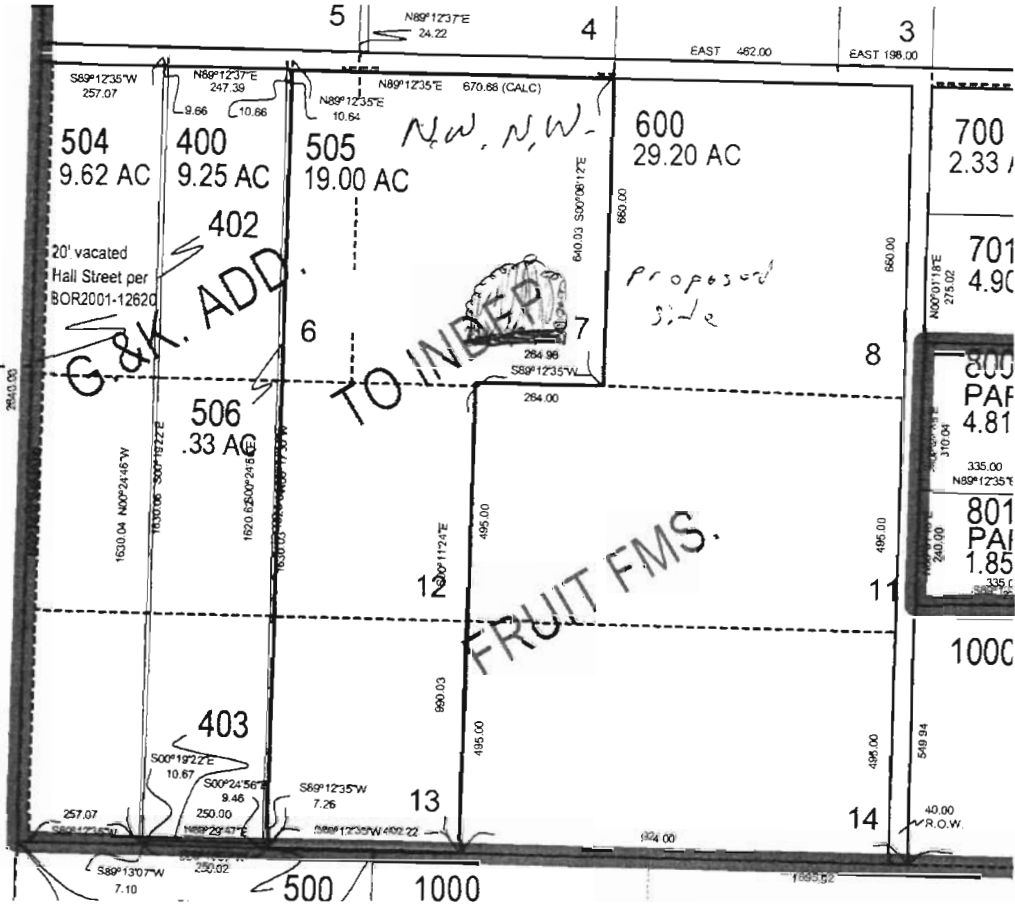


\* ← NW corner section 8

R-97537

1200 ft South  
1000 ft East  
NW corner  
Section 8

↑ North

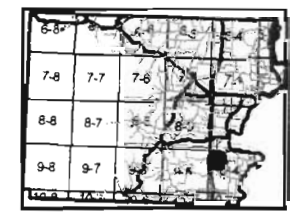


Polk County Map

9.4.8

- Railroad
- Roads
- Section
- Subdivision
- Taxlot09
- Taxlot Arrows09
- Taxlot Boundary5
- taxlot09
- TaxMap
- 2
- 32
- 33
- 34
- 7
- 8
- TaxMapAr
- Updates

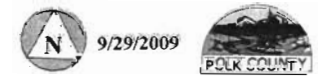
**RECEIVED**  
OCT 13 2009  
WATER RESOURCES DEPT  
SALEM, OREGON



*alpha B White J*  
10/13/09

This map was produced using the Polk County GIS data. The GIS data is maintained by the county to support its governmental activities. The county is not responsible for map errors, omissions, misuse or misinterpretation.

1 in. = 400 ft.



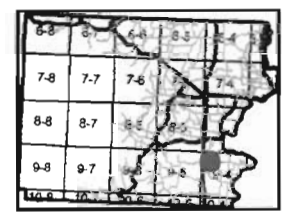
287537

### Polk County Map

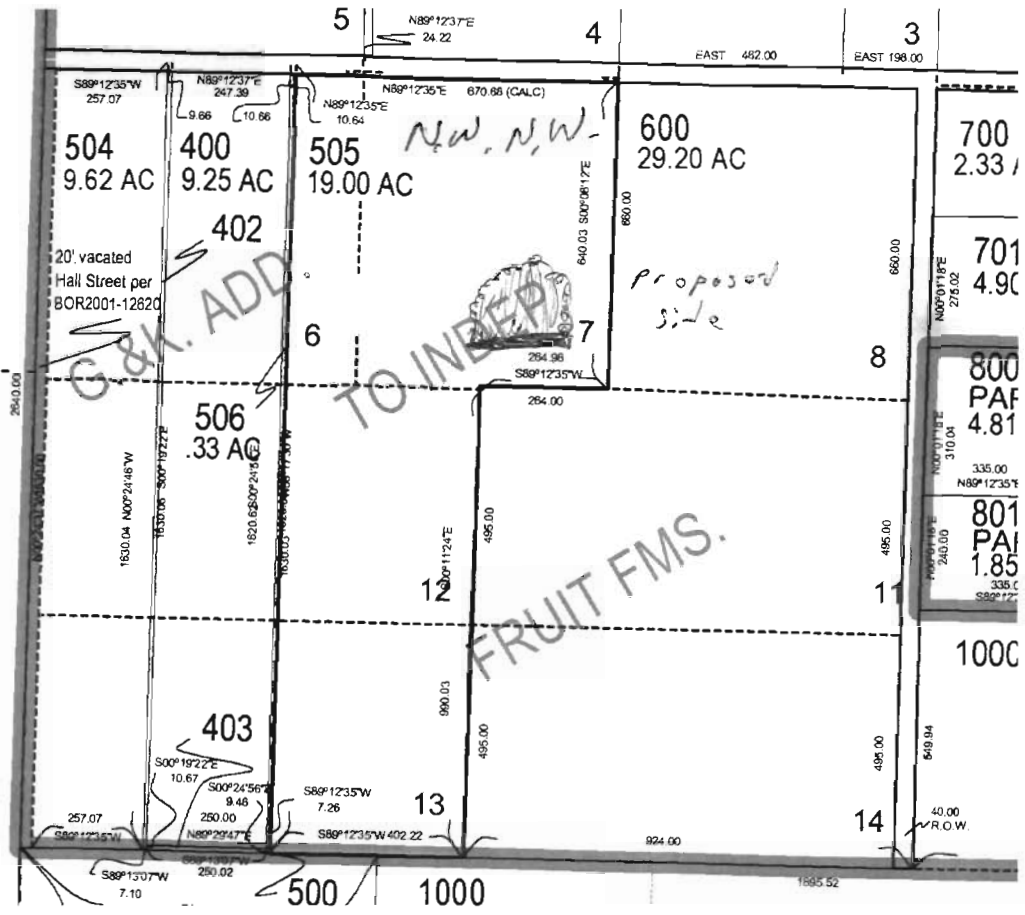
#### 9.4.8

- Railroad
- Roads
- Section
- Subdivision
- Taxlot09
- Taxlot Arrows09
- Taxlot Boundary5
- taxlot09
- TaxMap
- Updates

**RECEIVED**  
**OCT 13 2009**  
 WATER RESOURCES DEPT  
 SALEM, OREGON



↑ North



This map was produced using the Polk County GIS data. The GIS data is maintained by the county to support its governmental activities. The county is not responsible for map errors, omissions, misuse or misinterpretation.