

TL 1501 4.55
 TL 1502 4.55
 CANAL EASE. 156
 HOMESITE (1.40)
9.26 ACRES

(340' x 180')

WORK COPY

W.B. 10/20/2009

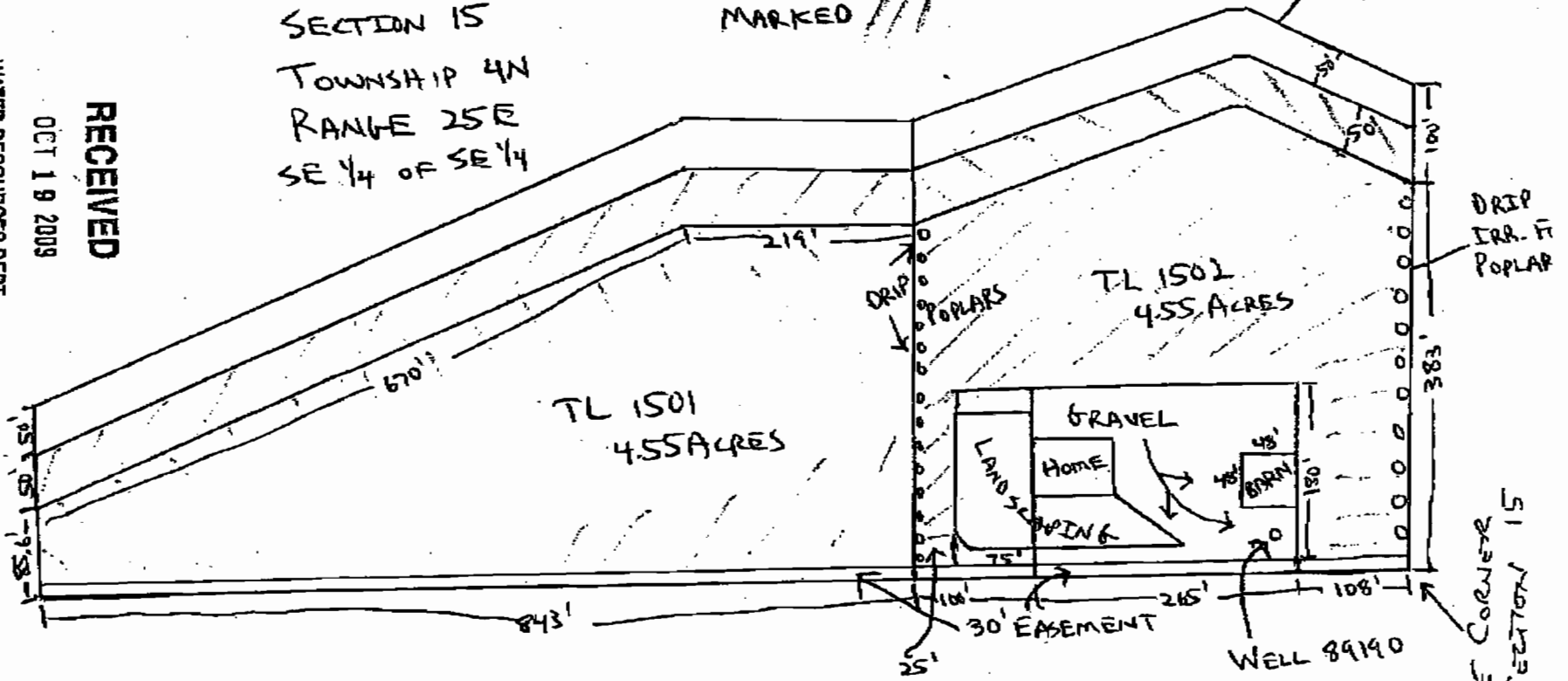
WELL LOCATED FROM
 SE CORNER
 SECTION 15
 150 FT WEST
 40 FT NORTH

N ↑

AREA TO BE
 IRRIGATED
 MARKED ///

SECTION 15
 TOWNSHIP 4N
 RANGE 25E
 SE 1/4 OF SE 1/4

CENTER OF
 WEED CANAL



RECEIVED

OCT 19 2009

WATER RESOURCES DEPT
 SALEM, OREGON

WORK COPY

TL 1501 4.55
TL 1502 4.55
CANAL EASE. 1.56
HOMESITE (1.40)

9.26 ACRES

WELL LOCATED FROM
SE CORNER
SECTION 15
150 FT WEST
40 FT NORTH

N ↑

(340' x 180')

AREA TO BE
IRRIGATED
MARKED ///

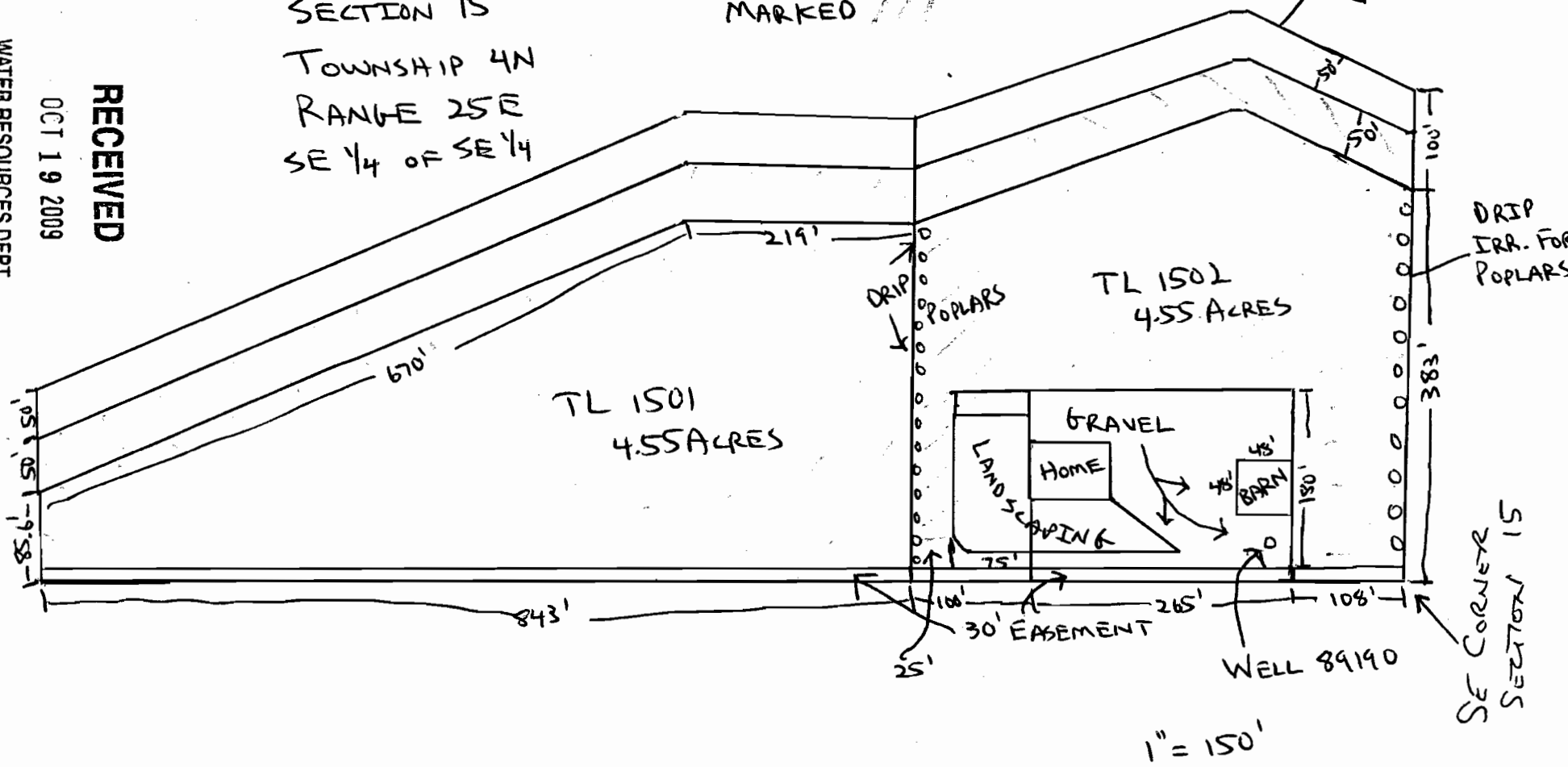
SECTION 15
TOWNSHIP 4N
RANGE 25E
SE 1/4 OF SE 1/4

CENTER OF
WEED CANAL

RECEIVED

OCT 19 2009

WATER RESOURCES DEPT
SALEM, OREGON



DRIP
IRR. FOR
POPLARS

TL 1502
4.55 ACRES

TL 1501
4.55 ACRES

GRVEL
HOME
BARN

WELL 89190

30' EASEMENT

1" = 150'

SE CORNER
SECTION 15

37271-9

TL 1501 4.55
 TL 1502 4.55
 CANAL EASE. 1.56
 HOMESITE (1.40)

 9.26 ACRES

N ↑

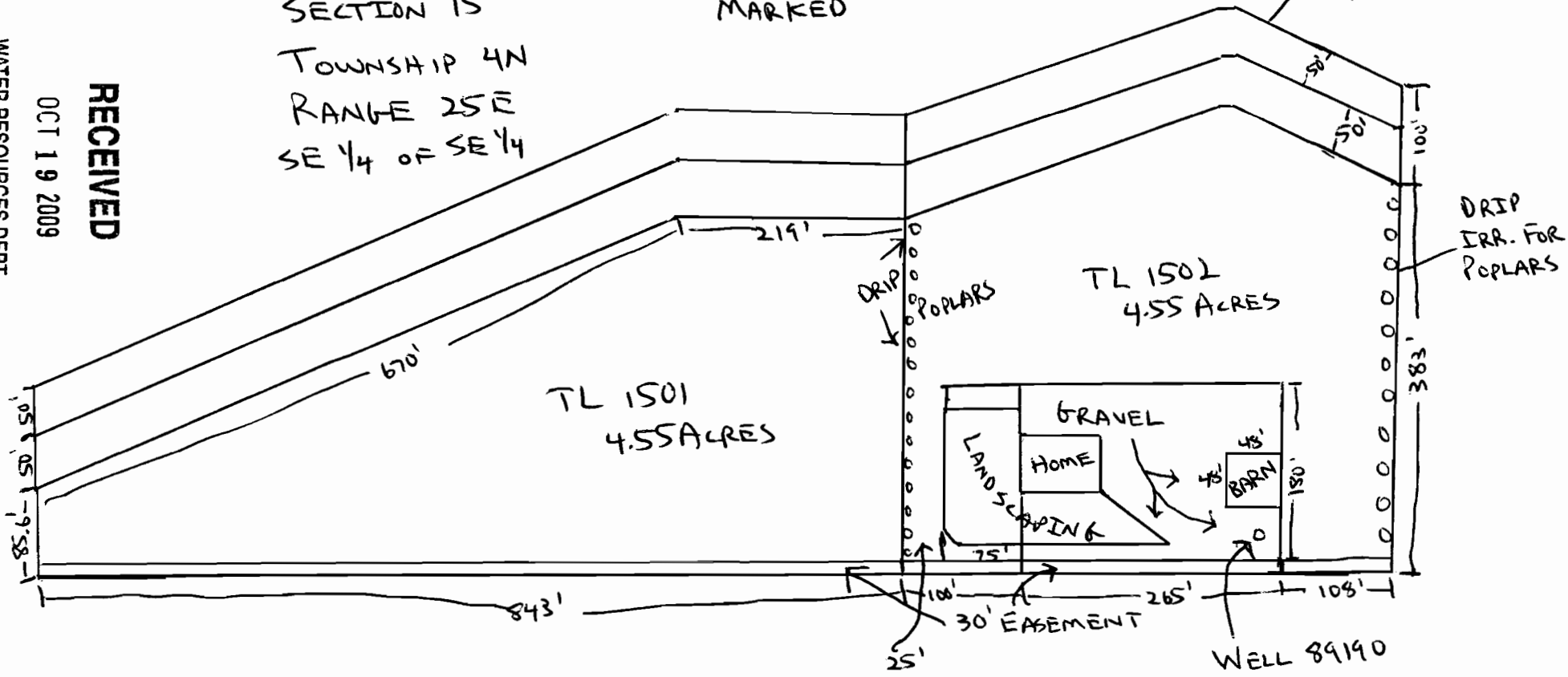
(340' x 180')

AREA TO BE IRRIGATED MARKED

SECTION 15
 TOWNSHIP 4N
 RANGE 25E
 SE 1/4 OF SE 1/4

CENTER OF WEED CANAL

RECEIVED
 OCT 19 2009
 WATER RESOURCES DEPT
 SALEM, OREGON



DRIP IRR. FOR POPLARS

TL 1502 4.55 ACRES

TL 1501 4.55 ACRES

1" = 150'