

TAX lot
100

Tax lot
200

Well
→

RECEIVED

OCT 23 2009

WATER RESOURCES DEPT
SALEM, OREGON



THIS MAP WAS PREPARED FOR ASSESSMENT PURPOSE ONLY

SECTION 4 T.2S. R.44E. W.M.
WALLOWA COUNTY

1" = 400'

RECEIVED

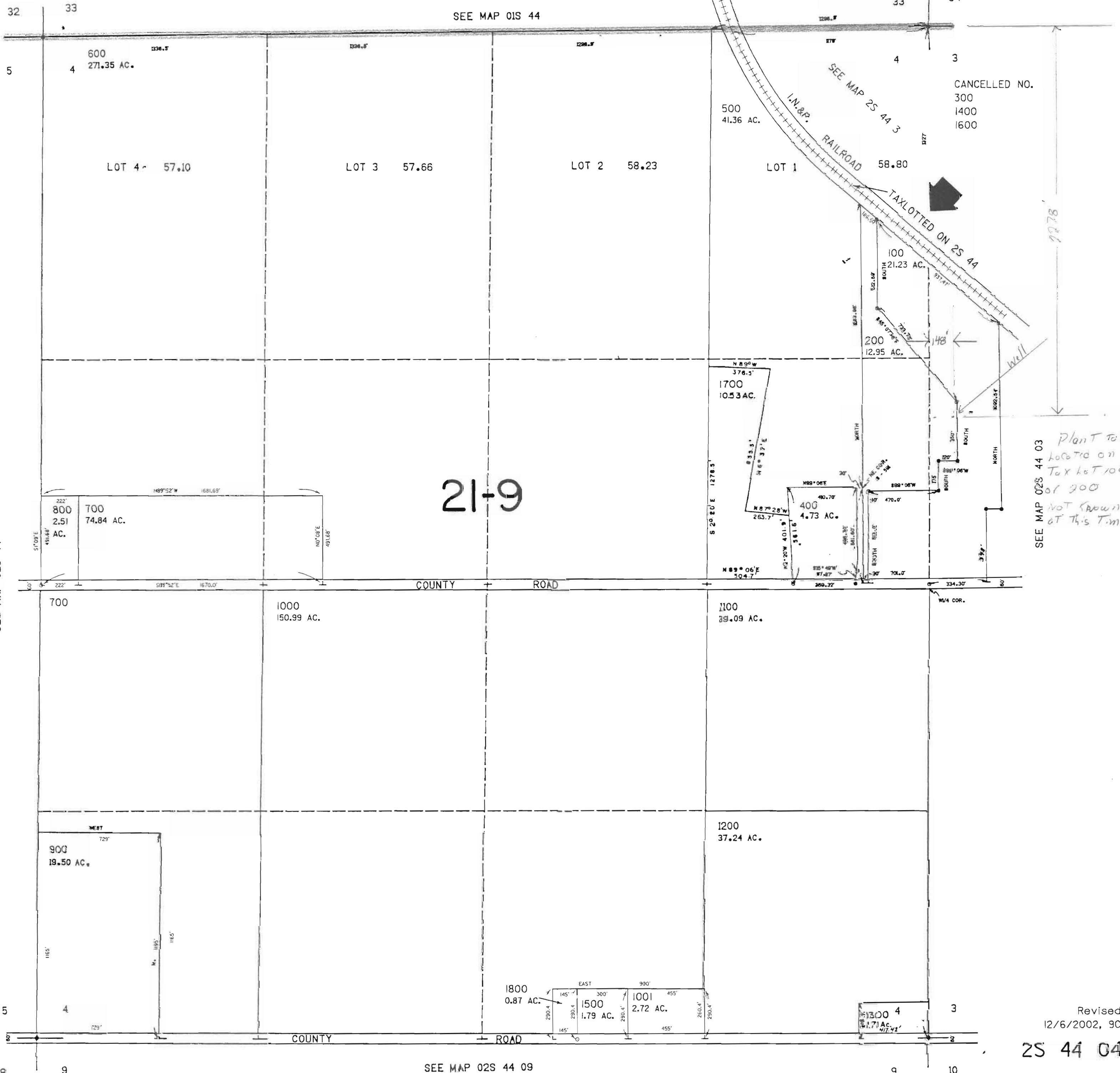
OCT 23 2009

WATER RESOURCES DEPT
SALEM, OREGON

2S 44 04

G-47280

SEE MAP 01S 44



SEE MAP 02S 44

SEE MAP 02S 44 03
Plant to be located on Tax lot 100 or 200 not shown at this time

Revised 12/6/2002, 9C

2S 44 04