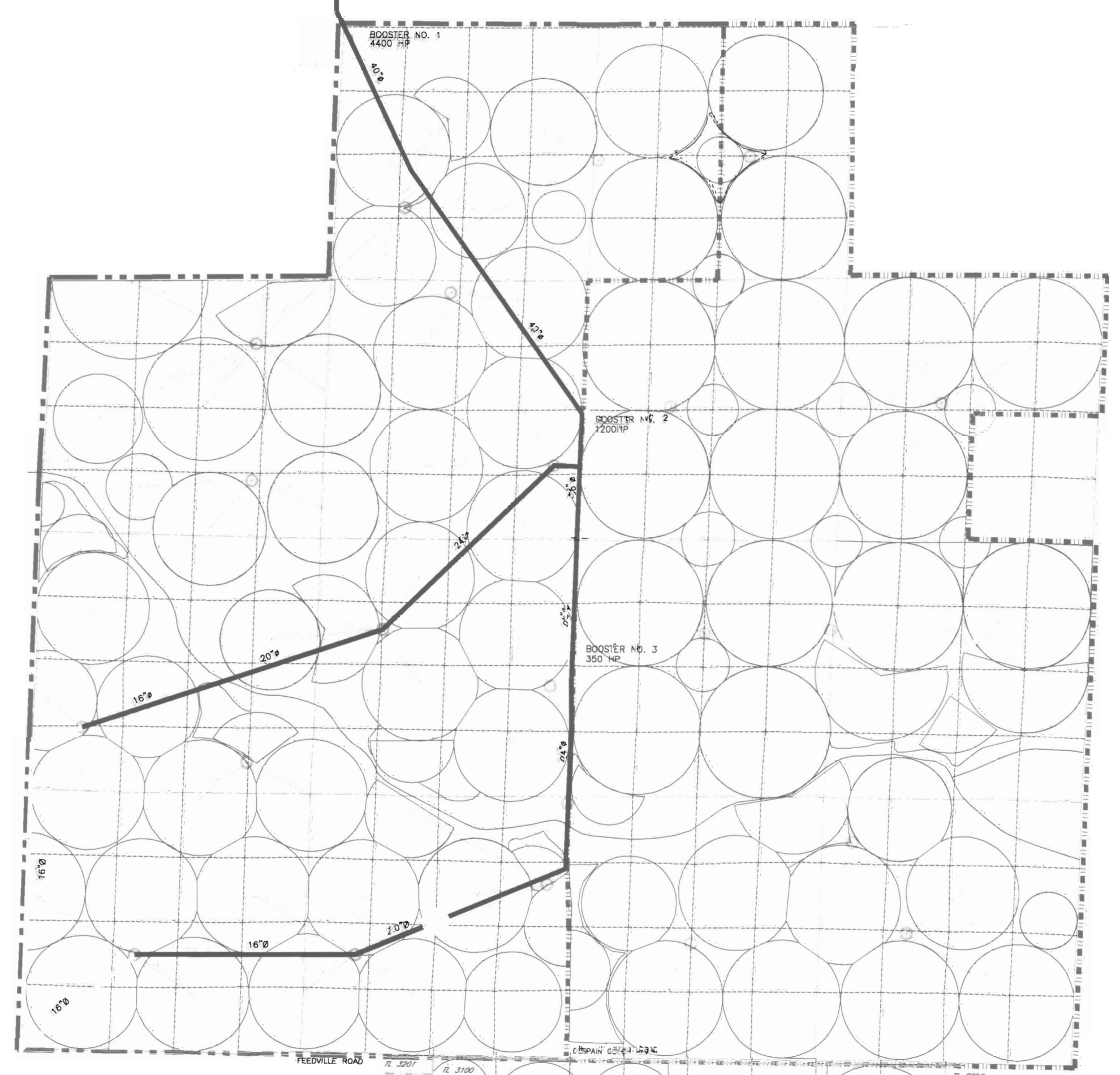


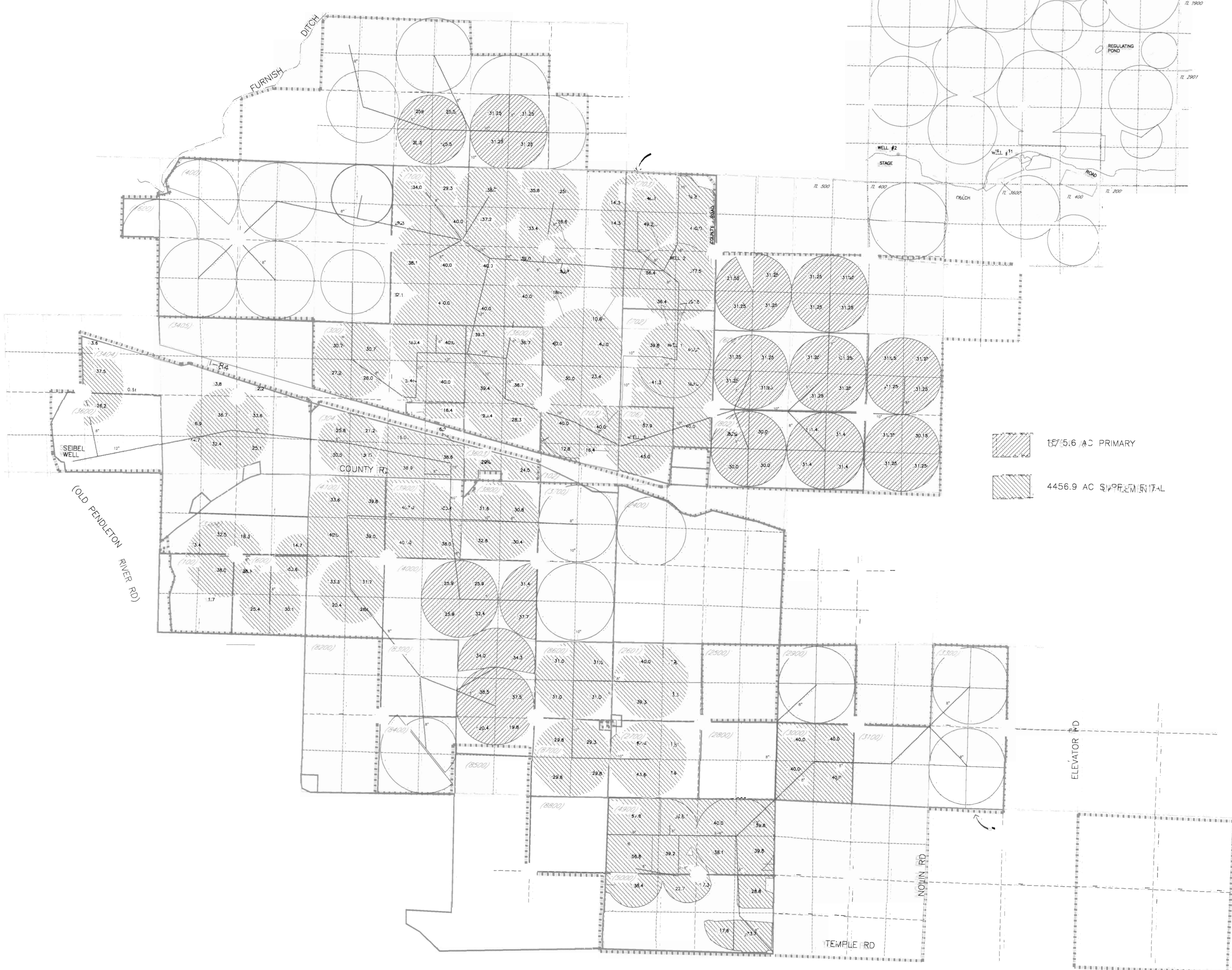
COLUMBIA RIVER

HUTTERITE RIVER STATION

COLUMBIA RIVER DIVERSION POINT
LOCATED 2910H NORTH AND 120H
EAST FROM THE SW CORNER SECTION
B, T.5N., R.30E., W.4



ECHO IRRIGATION DISTRICT PIPE LINE LOCATED ON DITCHES OWNERSHIP



1575.6 AC PRIMARY
4456.9 AC SUBSIDIARY

RECEIVED
MAY 26 2009
WATER RESOURCES DEPT
SALEM, OREGON

240

S-87074