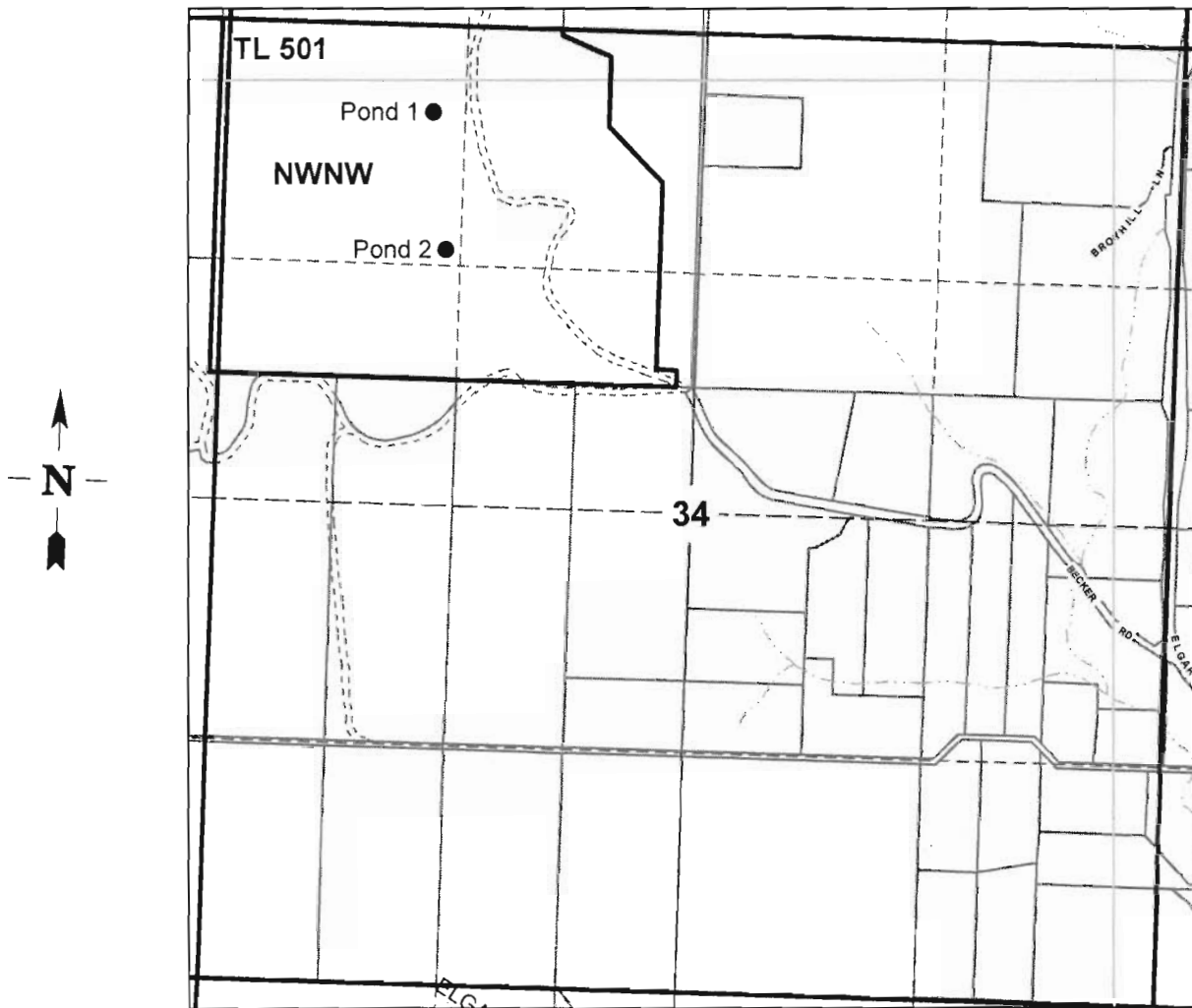


SEC.34 T.26S. R.7W. W.M.  
DOUGLAS COUNTY  
Scale 1" = 1000'

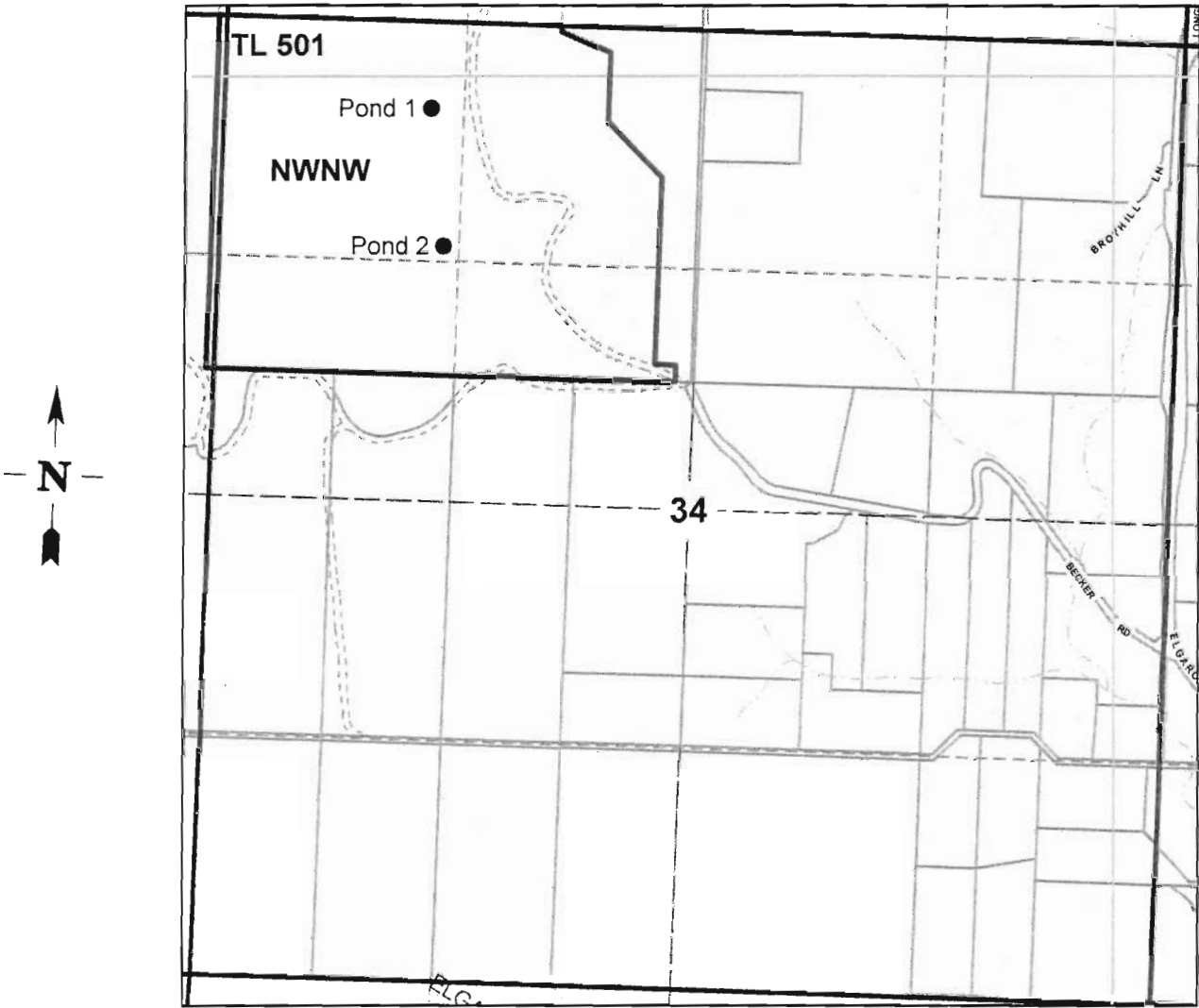


Pond 1 is located 1185 ft. E. and 478 ft. S. of the NW corner of Section 34.

Pond 2 is located 1234 ft. E. and 1260 ft. S. of the NW corner of Section ~~34~~.

R-87547

SEC.34 T.26S. R.7W. W.M.  
DOUGLAS COUNTY  
Scale 1" = 1000'



RECEIVED

NOV 12 2009

WATER RESOURCES DEPT  
SALEM, OREGON