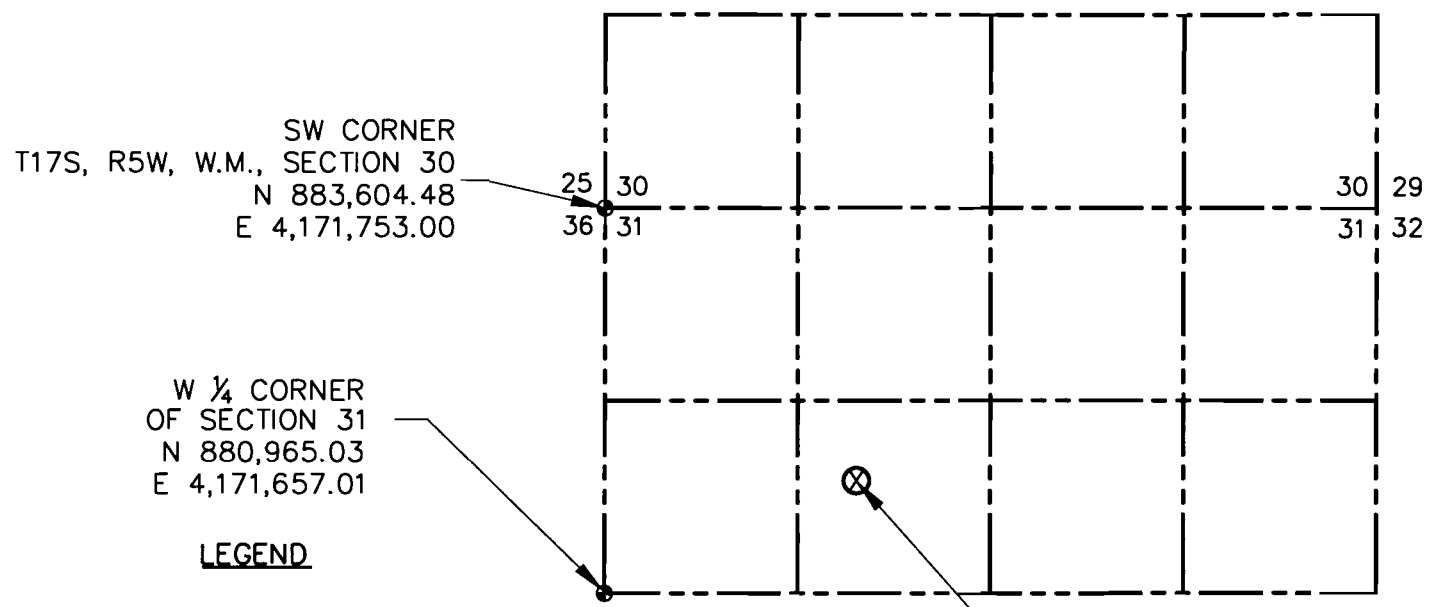


G-1721



SW CORNER
T17S, R5W, W.M., SECTION 30
N 883,604.48
E 4,171,753.00

W ¼ CORNER
OF SECTION 31
N 880,965.03
E 4,171,657.01

LEGEND

- ⊗ WELL LOCATION
- SURVEY CORNER

----- "40" LINE NOT NECESSARILY POU
P.O.A. POINT OF APPROPRIATION

WELL 12
P.O.A.
708.5 FT N & 1751 FT E
FROM W¼ CORNER S31

DATUM: NAD 83/91, OREGON SOUTH ZONE (3602)

DISCLAIMER

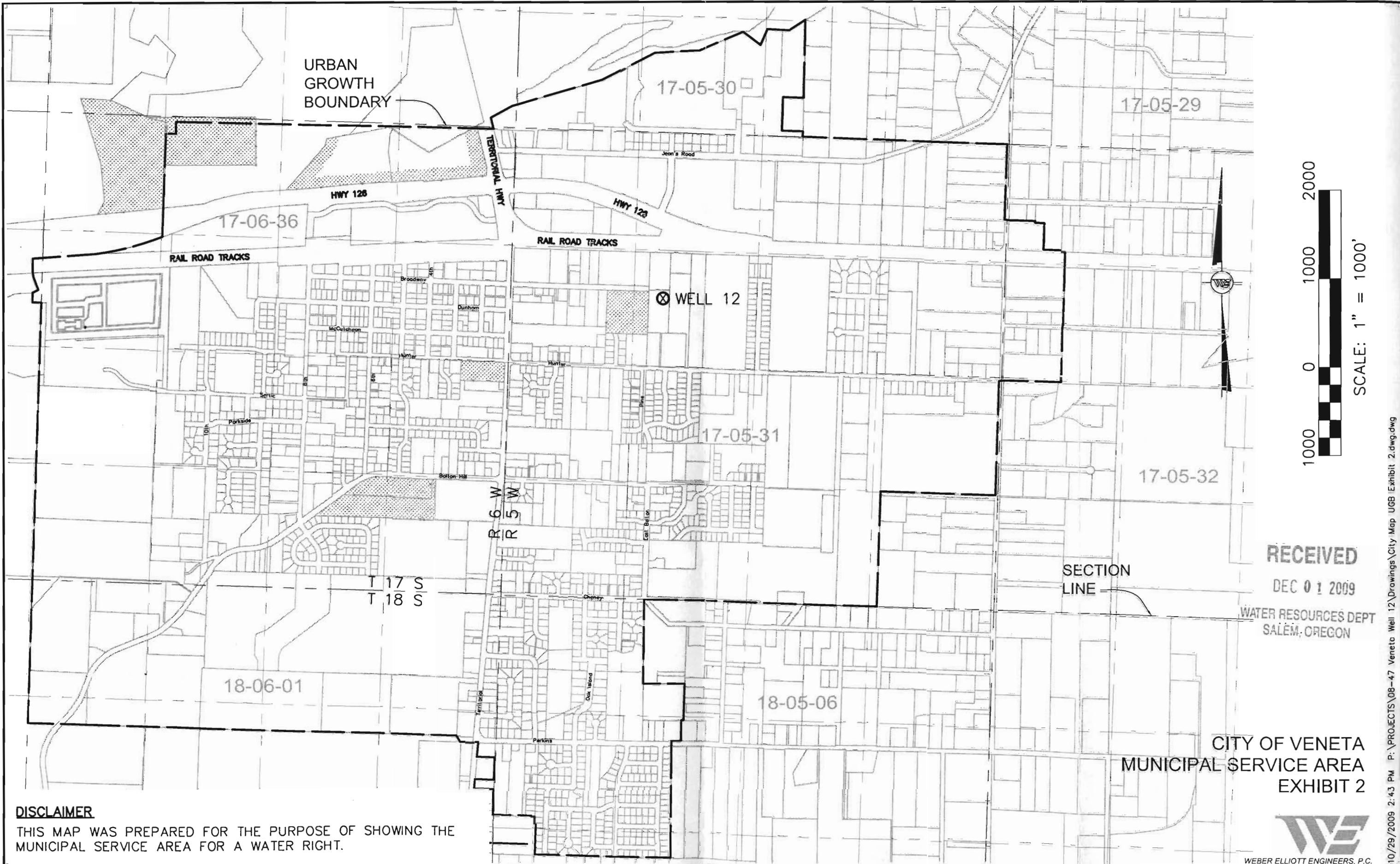
THIS MAP WAS PREPARED FOR THE PURPOSE OF IDENTIFYING THE LOCATION OF VENETA WELL 12 ONLY.

RECEIVED
DEC 01 2009
WATER RESOURCES DEPT
SALEM, OREGON

WEBER ELLIOTT ENGINEERS, P.C.

Civil Engineering · Municipal Engineering · Land Planning
P.O. Box 10145
Eugene, OR 97440
Phone: 541-461-9779

EXHIBIT 1
VENETA WELL 12
WELL LOCATION



DISCLAIMER

THIS MAP WAS PREPARED FOR THE PURPOSE OF SHOWING THE MUNICIPAL SERVICE AREA FOR A WATER RIGHT.

RECEIVED

DEC 01 2009

WATER RESOURCES DEPT
SALEM, OREGON

CITY OF VENETA
MUNICIPAL SERVICE AREA
EXHIBIT 2

