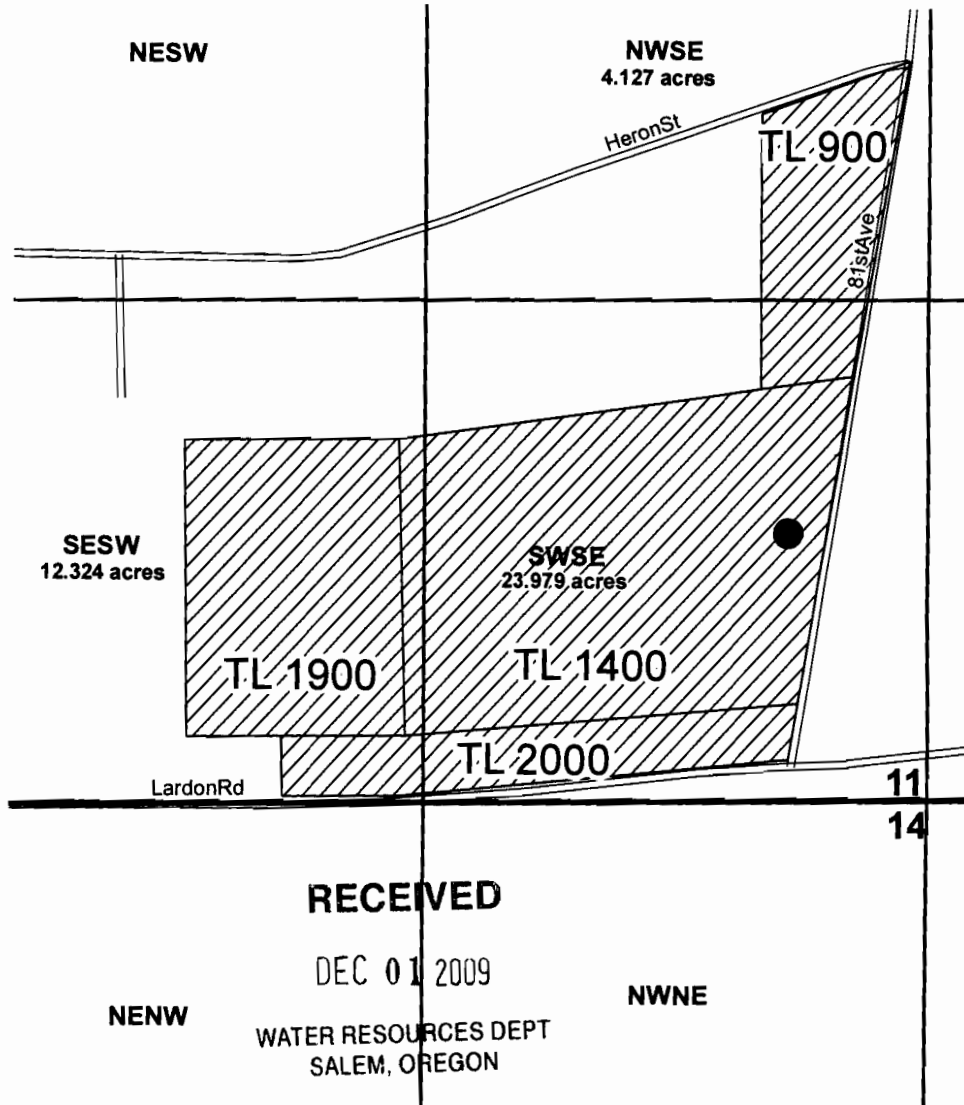


**T. 7 S., R. 2 W., W.M.
Section 11 SWSE
Marion County
Willamette Basin**

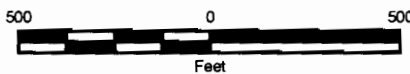


Legend

- Proposed Well
- Streets
- Section
- Quarter Quarter
- ▨ Place of Use

Reference Location:

- 1) Proposed well location is 1,715 feet West and 695 feet South of NE corner of Section 14, T7S, R2W, W.M.



Notes:

1. The locations of all features shown are approximate.
2. This drawing is for information purposes. It is intended to assist in showing features discussed in an attached document. GeoEngineers, Inc. can not guarantee the accuracy and content of electronic files. The master file is stored by GeoEngineers, Inc. and will serve as the official record of this communication.
3. It is unlawful to copy or reproduce all or any part thereof, whether for personal use or resale, without permission.

Groundwater Permit Application Map

**Dawson-Reslock Property
Salem, Oregon**

GEOENGINEERS 

Figure 1