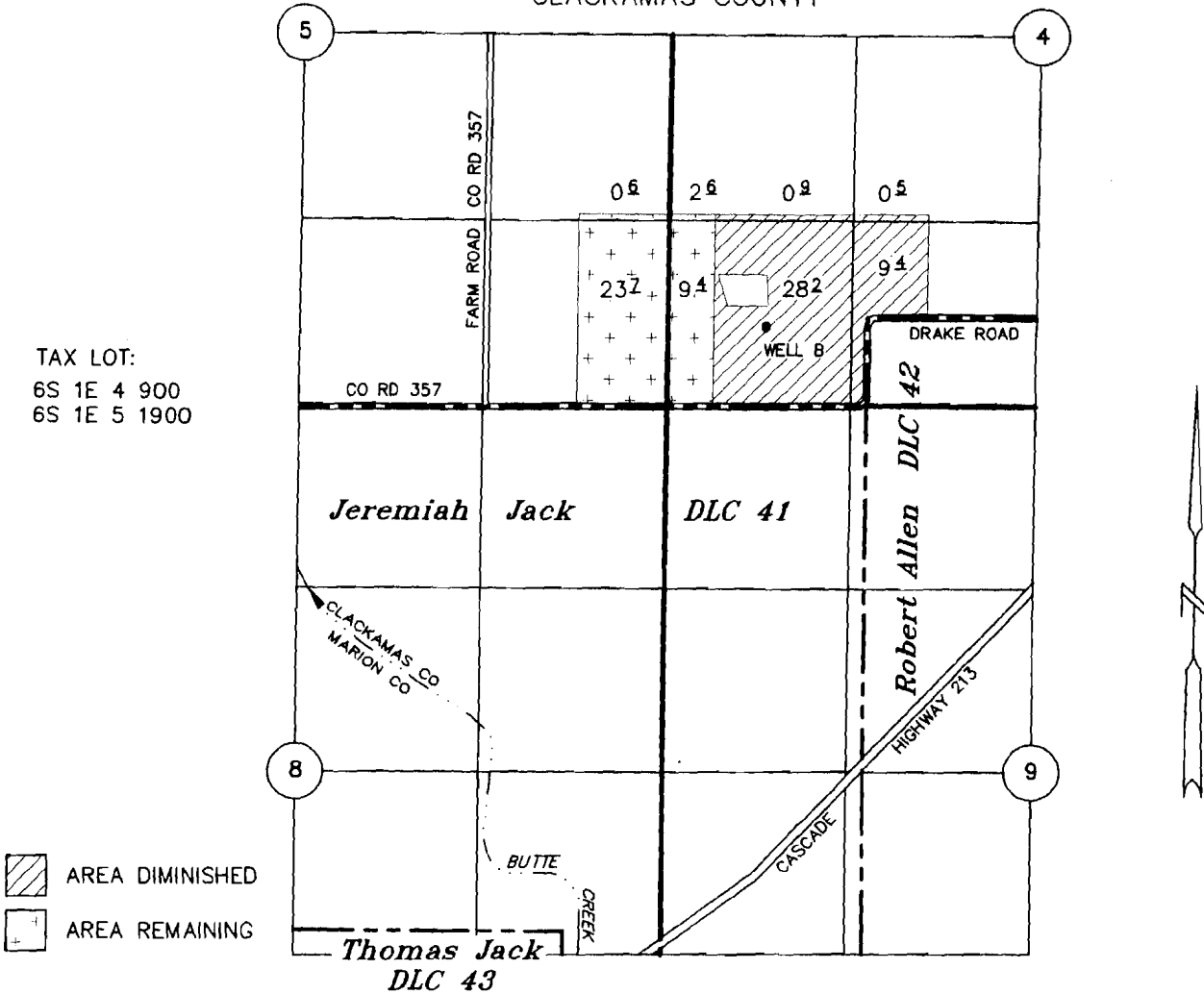


# T6S R1E, WM

CLACKAMAS COUNTY

TAX LOT:  
6S 1E 4 900  
6S 1E 5 1900



WELL: 66' S & 726' W OF NE COR ALLEN DLC No. 42

## PARTIAL DIMINUTION OF A WATER RIGHT CERTIFICATE

Certificate No. 31135 Martin Schneider, Jr.

### VICTOR SCHNEIDER & DONNA DEE BURNS

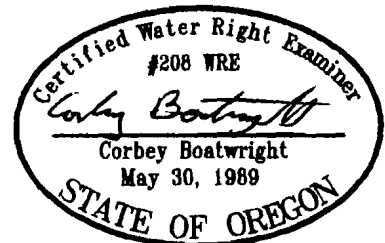
RECEIVED

NOV 19 2008

WATER RESOURCES DEPT  
SALEM, OREGON

AUGUST 18, 2008

SCALE: 1" = 1320'



NOTE: This map is not intended to provide legal dimensions or locations of property ownership lines.

EXPIRES 12-31-09