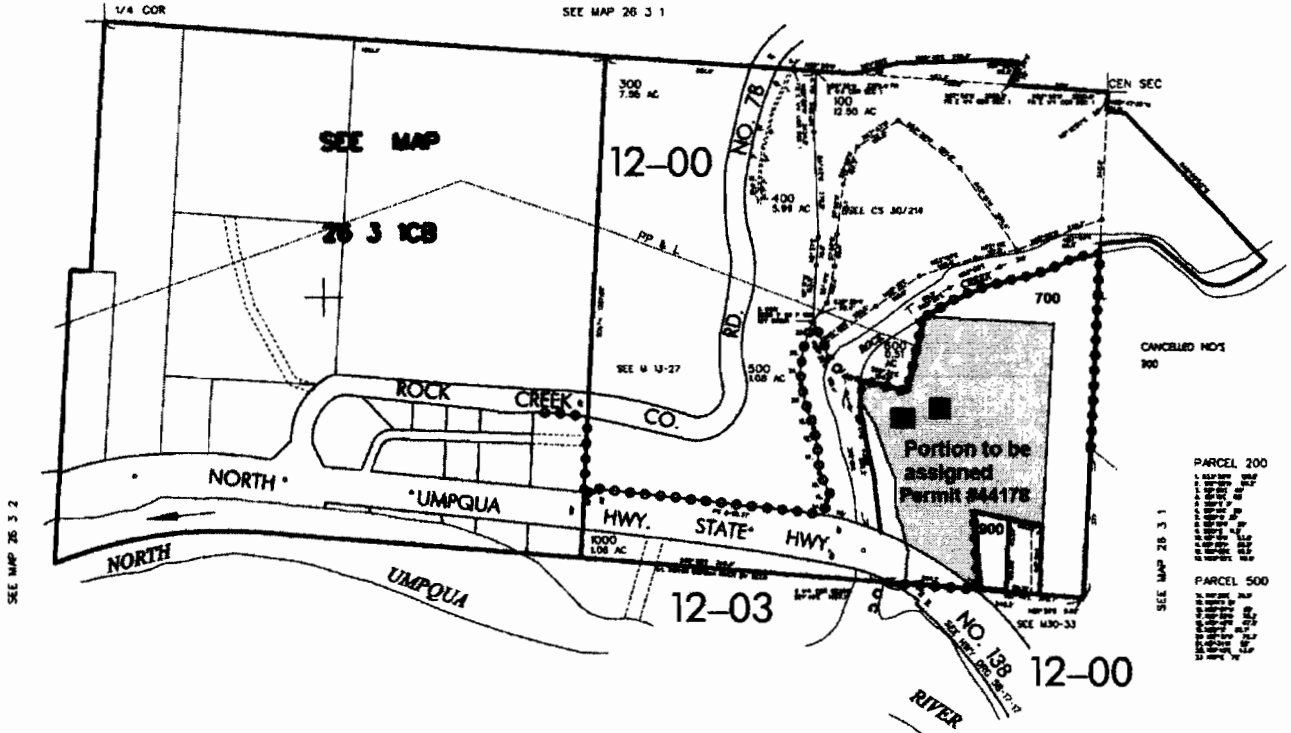


THIS MAP WAS PREPARED FOR
ASSESSMENT PURPOSE ONLY

SW1/4 SEC. 1 T.26S. R. 3W. W.M.
DOUGLAS COUNTY

26 3 1C
& INDEX

REVISED ON
10-21-04



2 1
11 12

SEE MAP 26 3 1

1/4 COR.
4,255,000
616,000
26 3 1C
& INDEX

RECEIVED
AUG 28 2006
WATER RESOURCES DEPT
SALEM, OREGON