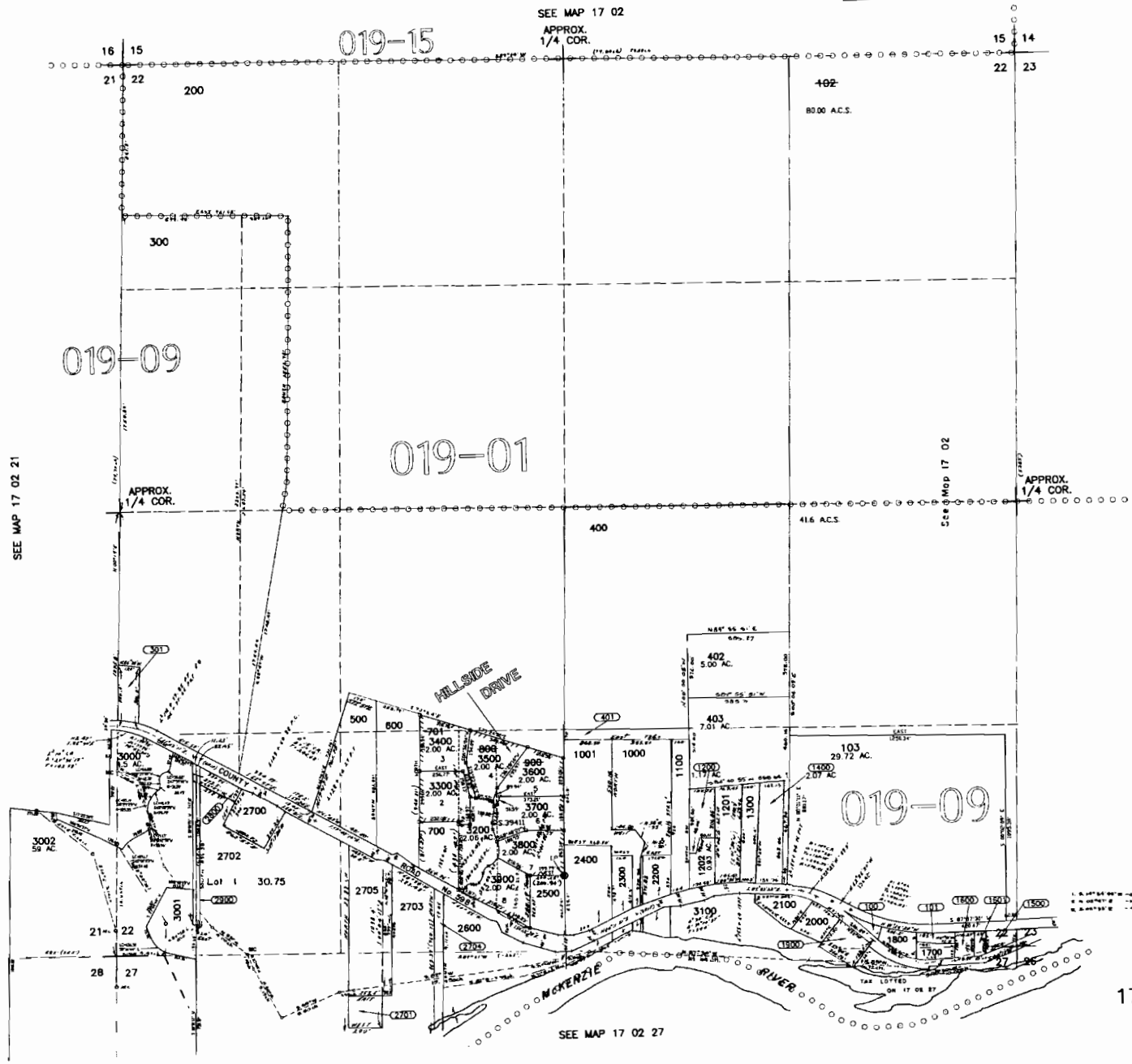


SCALE 1" = 400'

1/4 SECTION	SECTION	TOWNSHIP	RANGE
15	22	14	23

SEE MAP 17 02

APPROX. 1/4 COR.



CANCELLED
701
800
900
102

SEE MAP 17 02 23

17 02 22

S-87566

Water Rights Application Map
 FOR Garrie Neil & Linda Diane Johnson
 whos property is located in the
 SE 1/4, SW 1/4, Section 22, R2W, T17S, W.M.
 Lane County, Oregon

019-01

SCALE = 1" = 400'



See Map 17 02

APPROX.
1/4 COR.

APPROX.
1/4 COR.

POD LOCATION IS 2625 FT EAST
 AND 100 FT SOUTH OF THE
 NW CORNER OF SECTION 27,
 RANGE 2W, TOWNSHIP 17 SOUTH,
 W.M.

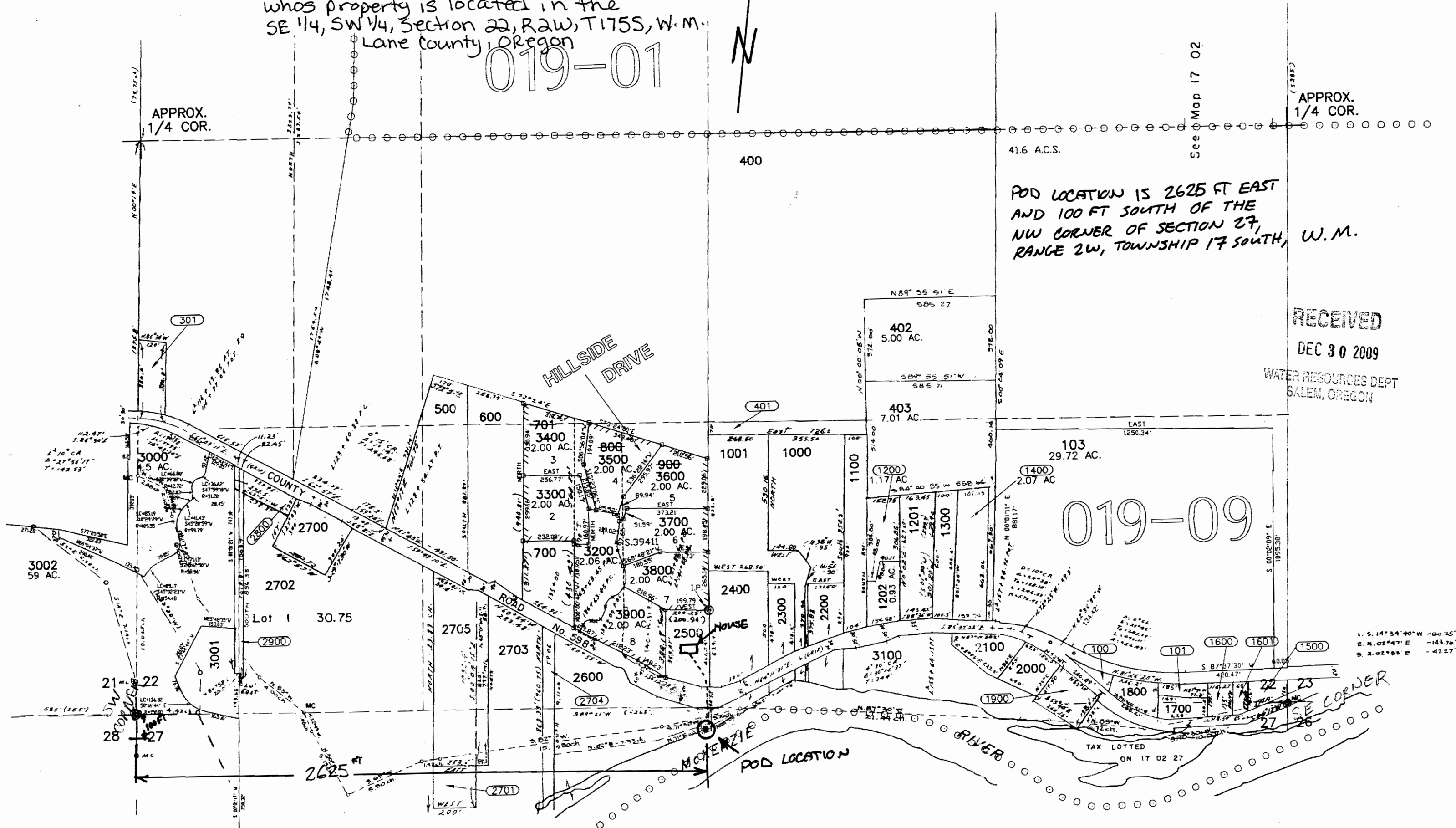
RECEIVED

DEC 30 2009

WATER RESOURCES DEPT
 SALEM, OREGON

019-09

1. S. 14° 34' 40" W - 00.25'
 2. N. 02° 47' E - 143.76'
 3. N. 02° 53' E - 47.27'



S-87566